
BUILDING INCLUSIVE COMMUNITIES

GPA PRESENTATION
SEPTEMBER 16, 2022

SIZEMORE GROUP

Award-Winning Planning, Architecture, & Interiors



**Deanna Murphy, AICP,
M.ARCH**

**DIRECTOR OF
PLANNING**



**ANGEL KAUFFMANN, IIDA,
LEED AP BD+C**

DIRECTOR OF interiors



**NICK MILLER, LEED ga
PLANNER**

MEET THE PRESENTERS



SIZEMORE GROUP

Cultural Places | Beautiful Spaces

Inspiring the best in culture and shaping unique communities.

For us, it's personal.

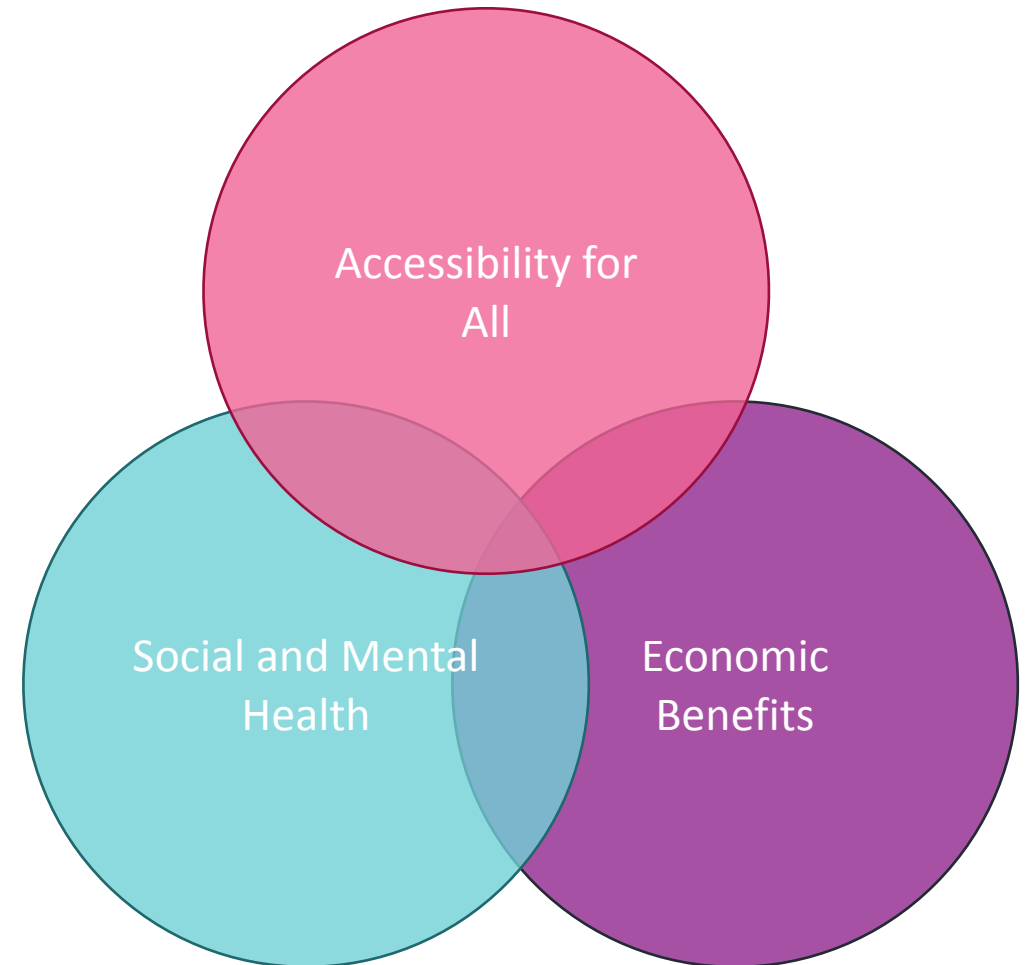
Inclusive spaces align with Sizemore Group's core values to always be curious, caring, responsive, and inspiring.

Agenda

1. Why is inclusive design important?
2. Killebrew District
3. Circle of Friends
4. Fulton Arts
5. Panel

WHY IS INCLUSIVE DESIGN IMPORTANT?

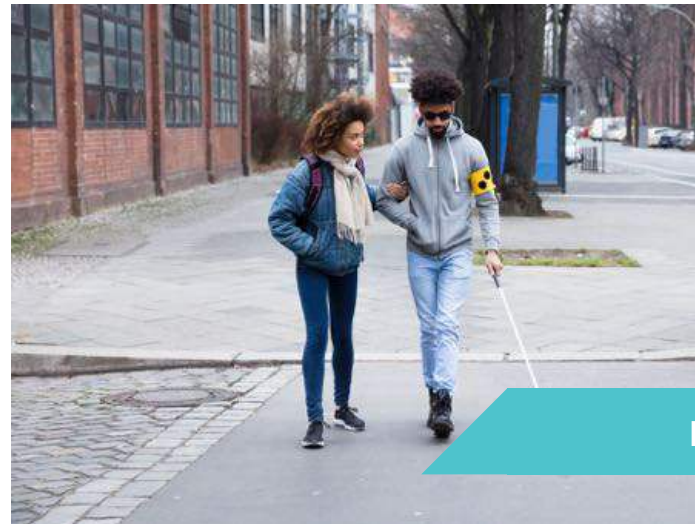
1. Accessibility for All
2. Social and Mental Health
3. Economic Benefits



WHY IS INCLUSIVE DESIGN IMPORTANT?

28% of all Georgia Residents (2.2 million)
26% of U.S. adults (61 million)
Identify as living with a disability

Accessibility for these individuals is **accessibility for all**



BUILDING INCLUSIVE COMMUNITIES

WHY IS INCLUSIVE DESIGN IMPORTANT?

Benefits of increased social and mental health care

1. Increased participation can:
 - Increase income and educational attainment
 - Increase cognition
 - Increase mental health, less loneliness and social isolation, enhanced recovery, sense of belonging

Prior to ADA, people identifying with intellectual or mental illness were institutionalized or imprisoned.

The ideal community houses people of ALL abilities without over-reliance on prisons and institutions

WHY IS INCLUSIVE DESIGN IMPORTANT?

Inclusive Design has an Economic Upside

1. The disposable income for individuals with disabilities is nearly \$500 billion
2. A larger pool of talent thanks to an inclusive environment creates a competitive advantage for businesses
3. 72% of individuals would leave their current job to join a more inclusive environment
4. Allowing more individuals to contribute to the economy reduces the burden on social programs

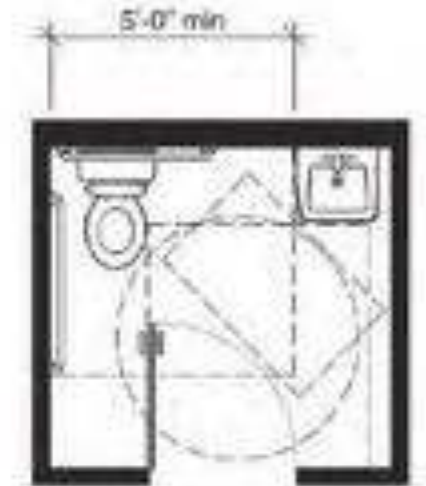
THE ADA DOES NOT DO ENOUGH

Design beyond the bare minimum

1. **Universal Design = Good Design**
An environment that is accessible, usable, convenient, and a pleasure to use
1. **Avoid retrofits/remodels down the road**
2. **Added Value**
3. **“Nothing for the disabled community, without the disabled community”**
Include the Disabled Community in the Design Process



2010 Standards



KILLEBREW DISTRICT:
AN ALL-INCLUSIVE COMMUNITY
BUILT FOR EVERYONE

BUILDING INCLUSIVE COMMUNITIES

Killebrew district

Clarksville, Tennessee
310 acre

Community Centered
One stop shop for families
Centered on education

KILLEBREW DISTRICT



MIXED USE

- Mix of uses to support families, centered on education
- Inclusive neighborhood



KILLEBREW DISTRICT

WALKABILITY

- Walkable to Main Street/Retail
- Walkable to school
- Close adjacency to nature



VARIETY OF HOUSING

- 5. Farmhouse Style/
Cottage Courts
- 7. Townhomes
- 56. Dormitories (w/ services)
- 57. Cottages
- 58. Nature Center with horses



VARIETY OF HOUSING

Cottage Courts

- Decorative/secure fencing
- Special keys on doors

Dormitories

- Services provided on-site
- Advisor
- Quiet spaces/sensory room
- Adjustable lighting
- Pale colors
- Flooring to reduce sound
- Patterns that limit visual stimuli

Townhomes & Cottages

- More independent living
- Designed with neurodivergent needs in mind:
 - Acoustics
 - Storage
 - Color
 - Lighting
 - Security



NATURE-CENTRIC

- Nature Center
 - Community events and education
 - Butterfly gardens
 - Access to trails – flat, ADA compliant, quiet to active exploration
 - Sensory station, alone zones, music, design zone
- Hippotherapy
 - Horse stalls at nature center
 - Access to trails



Employment

Employment Opportunities

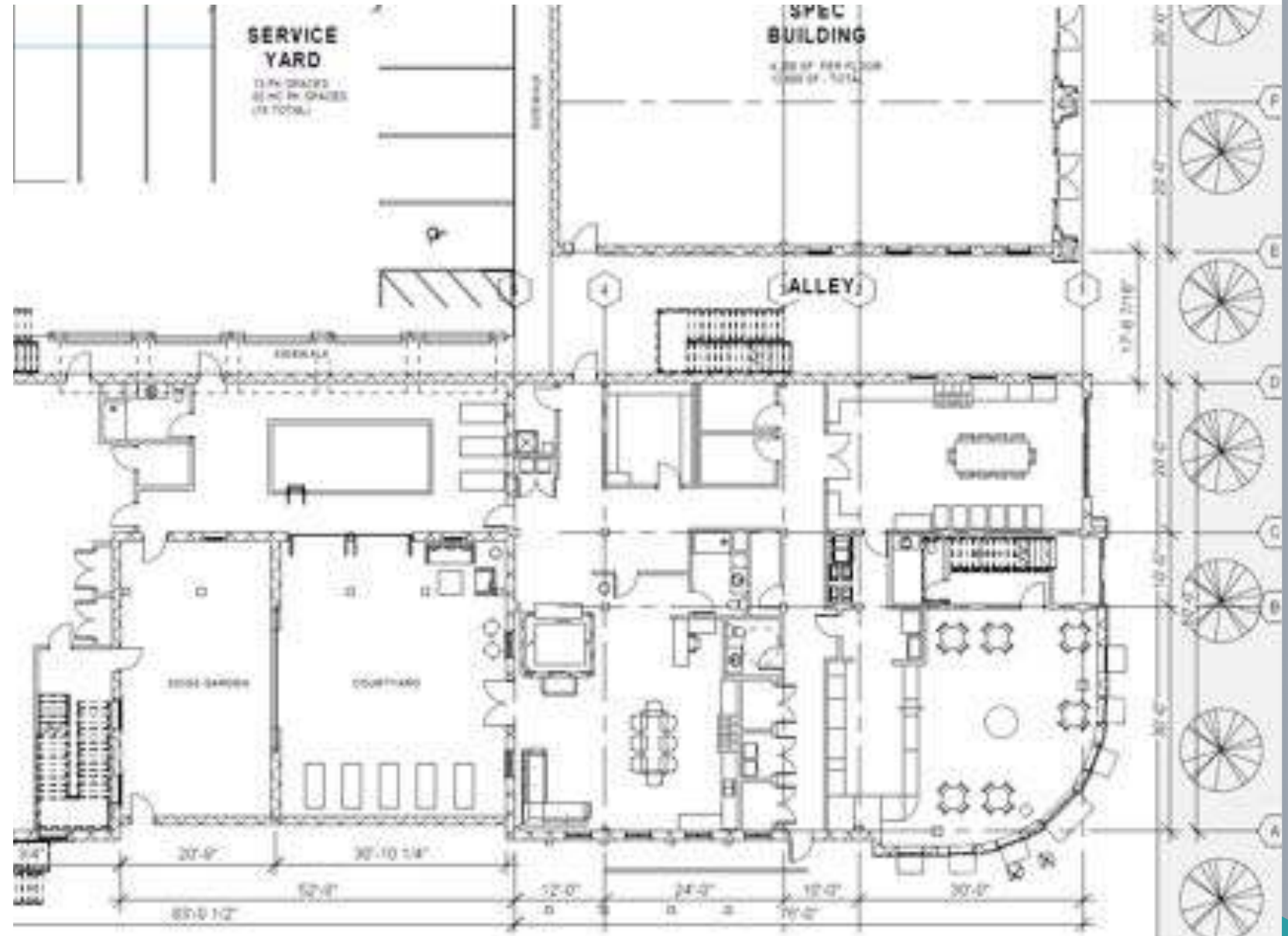
- Bakery designed for neurodivergent individuals
- Bakery on main street adjacent to school

Employment



Employment Opportunities

- Bakery designed for neurodivergent individuals
- Bakery on main street adjacent to school



WHY IS INCLUSIVE DESIGN IMPORTANT?

Physical access for all

- Integrated living with support services near by
- Variety of housing types to accommodate a variety of disabilities
- Beyond ADA accessibility for private residents, trails, nature center
- Security

Social and mental health

- Part of a community
- Walkability to services and everyday needs
- Inclusive school
- Access to therapy
- Access to nature
- Interior design

Economics

- Job opportunities - Bakery
- Integrated into the community – spending power

CIRCLE OF FRIENDS: A COMMUNITY OF HOPE

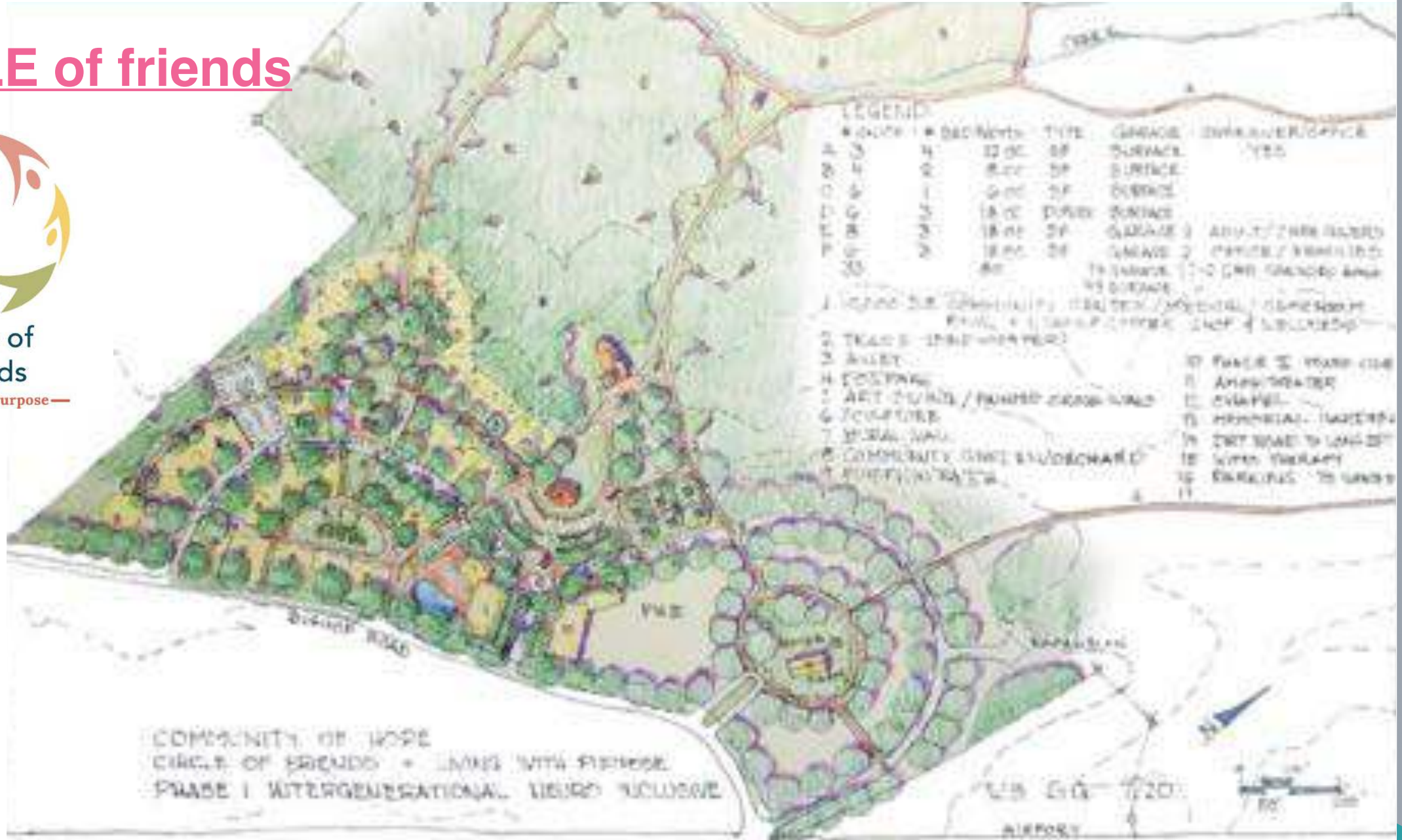
BUILDING INCLUSIVE COMMUNITIES

CIRCLE of friends



Circle of Friends

—Living with Purpose—



An intergenerational and supportive residential community that empowers adults living with disabilities, typical peers and elders to flourish in the community



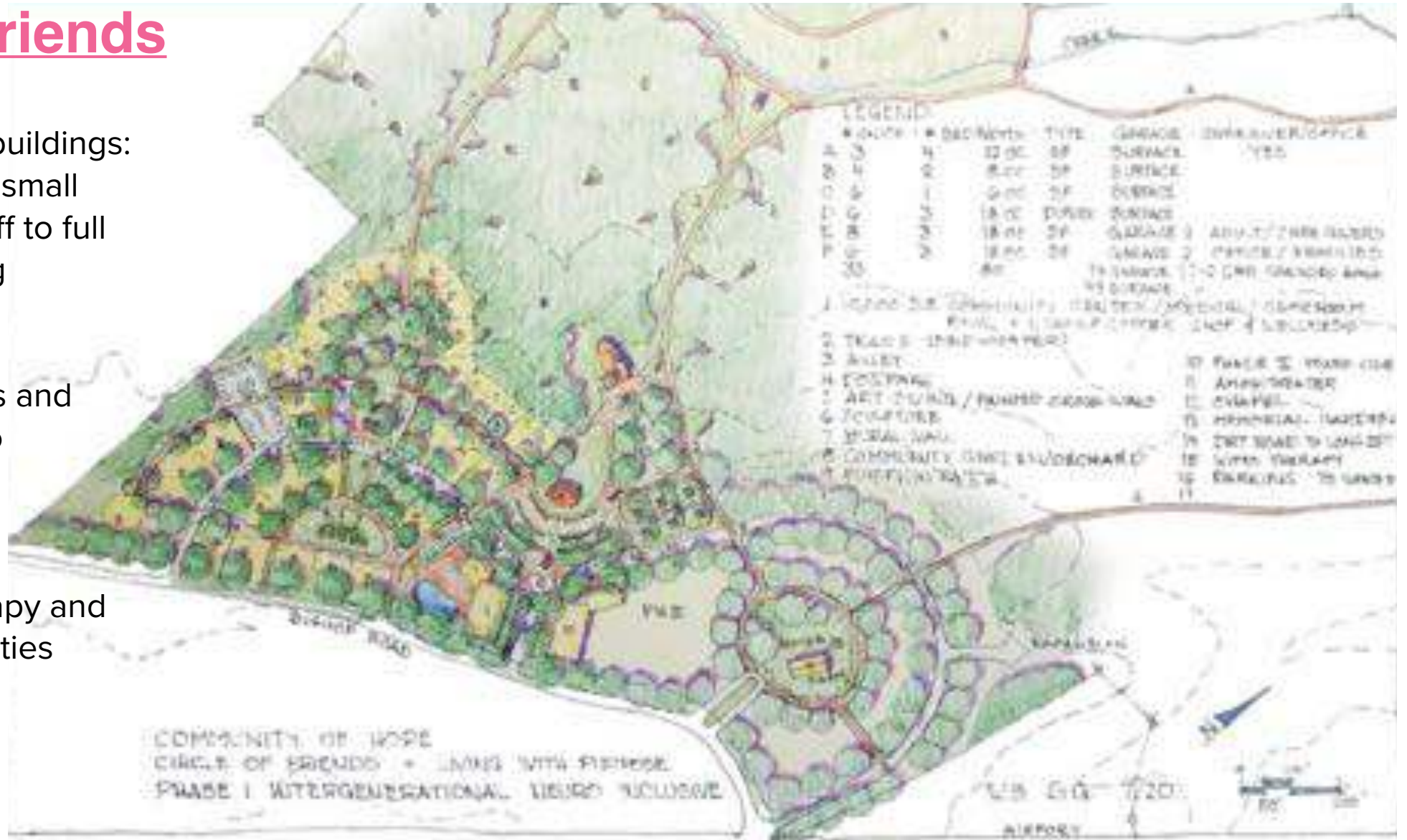
PROJECT VISION

Phase	Description	Notable Features
<p>Phase 1</p> <p>Intergenerational neuro-inclusive community of single and multi-family homes in a live-work-play intentional community</p>	<ul style="list-style-type: none"> • Co-housing community of single family and multi family homes • Neuro-inclusive • Intergenerational • Live-work-play • Intentional community 	<ul style="list-style-type: none"> • Learn life skills • Transition to independence • Make friends • Supportive employment opportunities • Community integration • Safe neighborhood • Affordable • Universal design • Cognitive accessibility features
<p>Phase 2</p> <p>Addition of moderate support onsite for individuals with behavioral support needs in a home environment integrated in Community of Hope and Cherokee County</p>	<ul style="list-style-type: none"> • For individuals with moderate support needs • Phase 1 amenities with the addition of • Moderate support onsite • Individuals with behavioral support needs 	<ul style="list-style-type: none"> • All of the above • Sensory-friendly design • Design in process
<p>Phase 3</p> <p>Addition of intense support for individuals with physical support needs in a home environment integrated in Community of Hope and Cherokee County</p>	<ul style="list-style-type: none"> • For individuals intense support needs • Phase 1 amenities with the addition of 24/7 support • Individuals with physical support needs 	<ul style="list-style-type: none"> • All of the above • Design in process

Circle of friends

Different types of buildings:

- Independent to small group with 1 staff to full assistance living
- Integrate horses and nature trails into community
- Access to Therapy and Work Opportunities





MAIN STREET DISTRICT



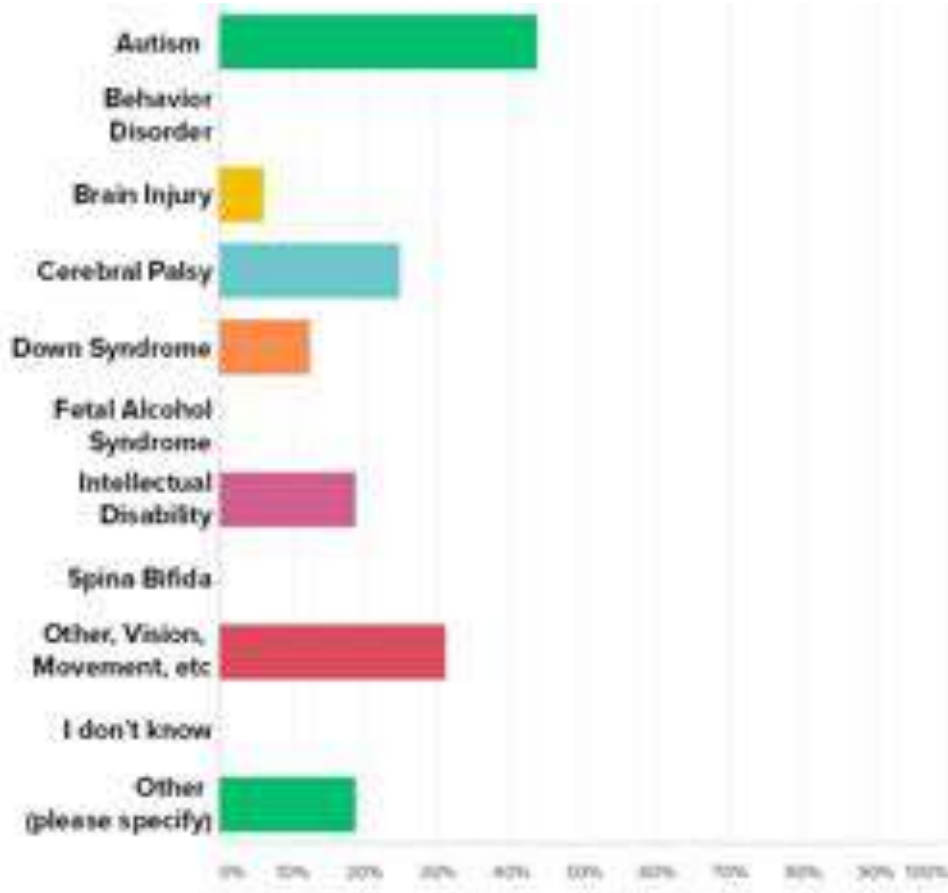
COMMUNITY GARDEN DISTRICT



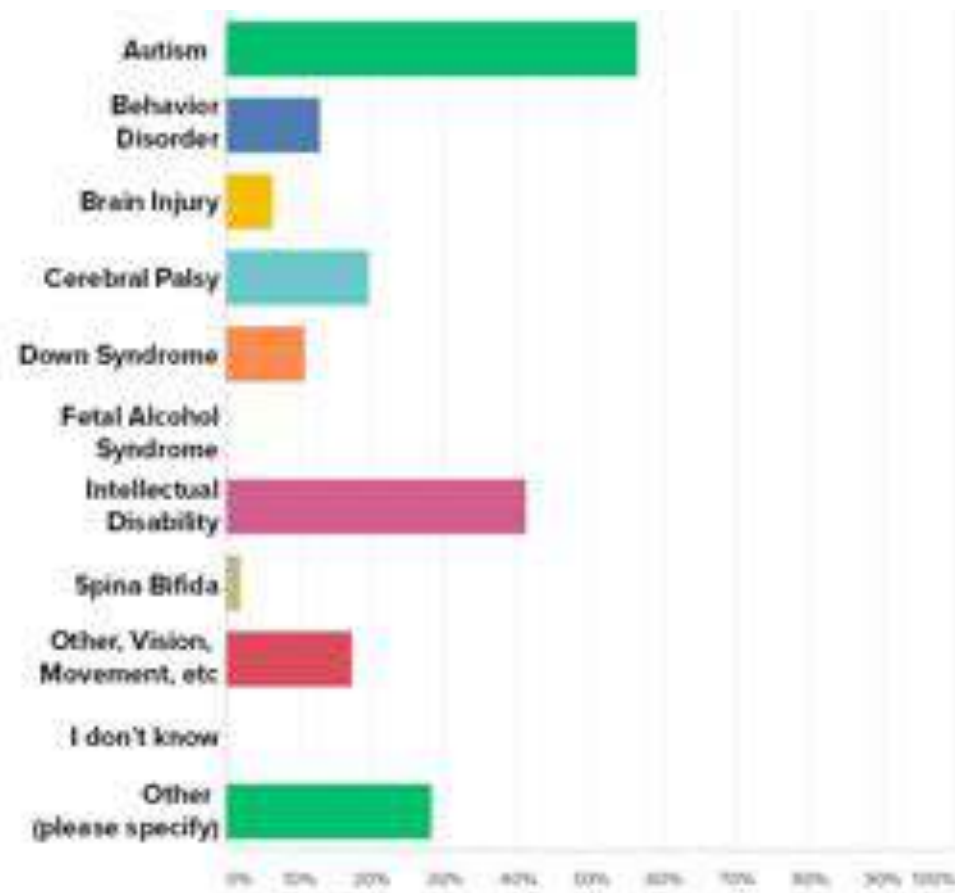
DOG PARK DISTRICT

Community engagement

Responses from Adults with an IDD (16)



Responses from Family Members (46/54)



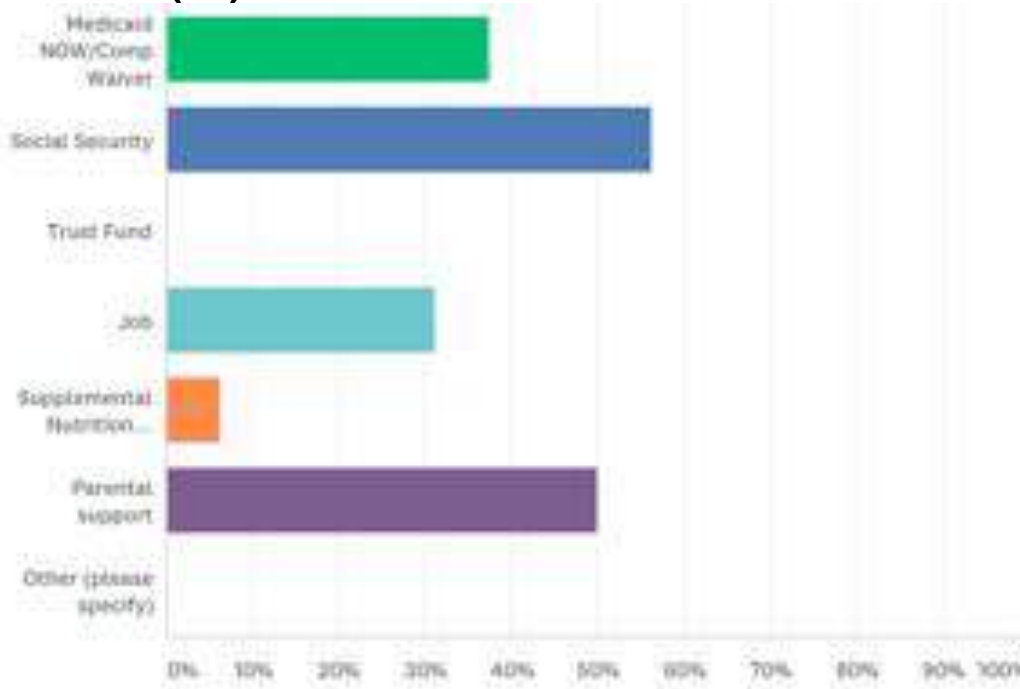
Community engagement



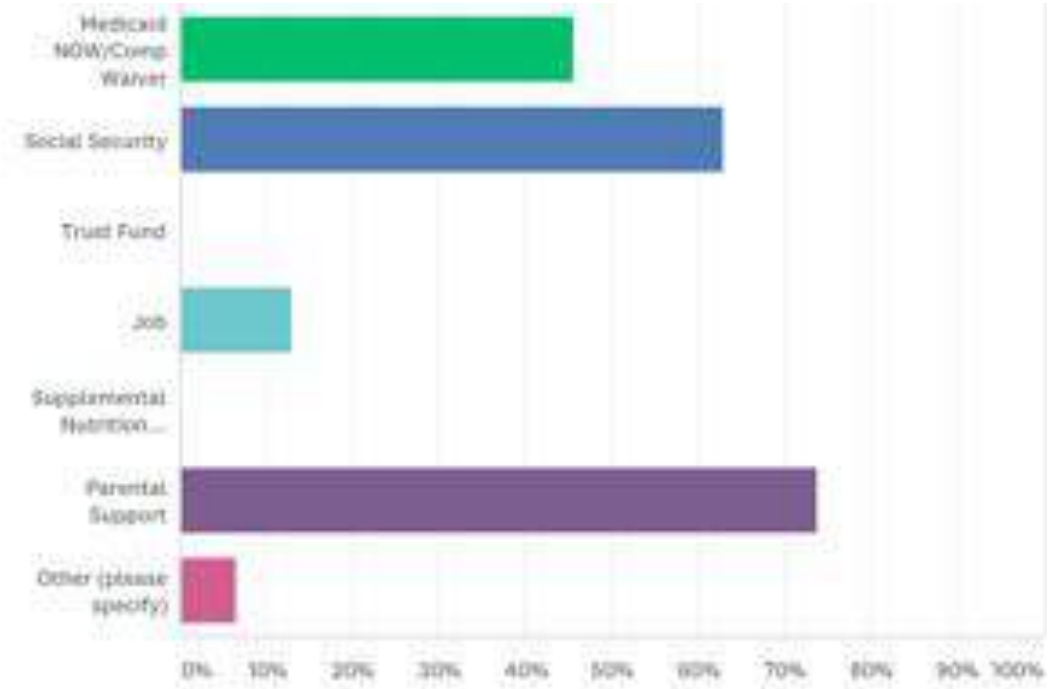
Community engagement

Q9: How do you or your loved one receive funding? Select all that apply.

Responses from Adults with an IDD
(16)



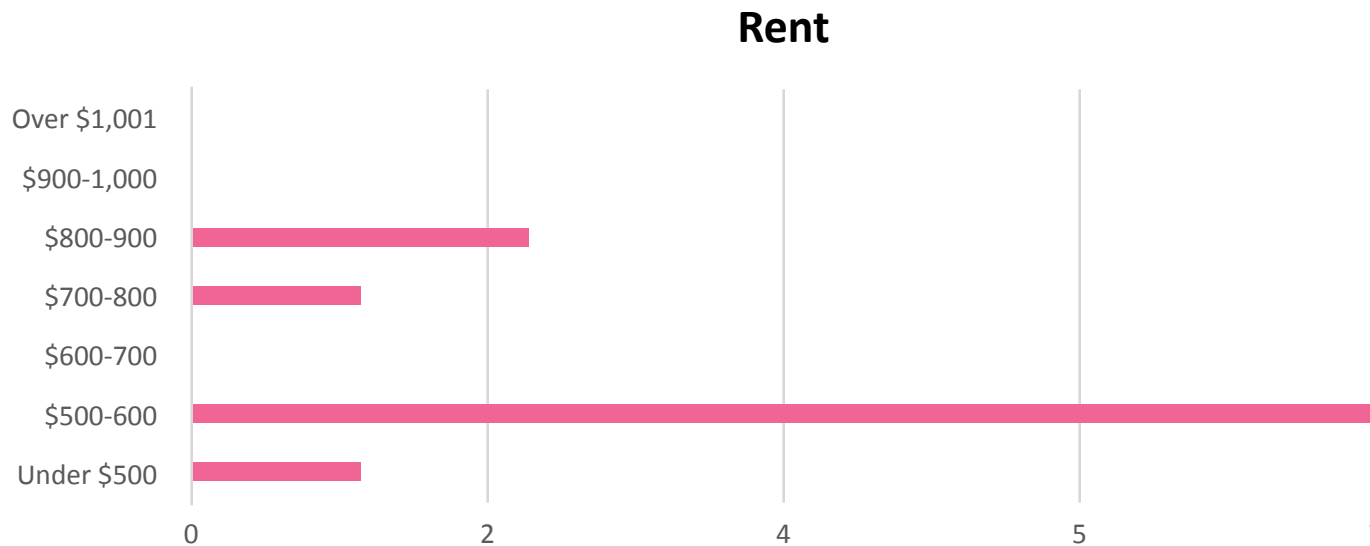
Responses from Family Members (46/54)



Community engagement

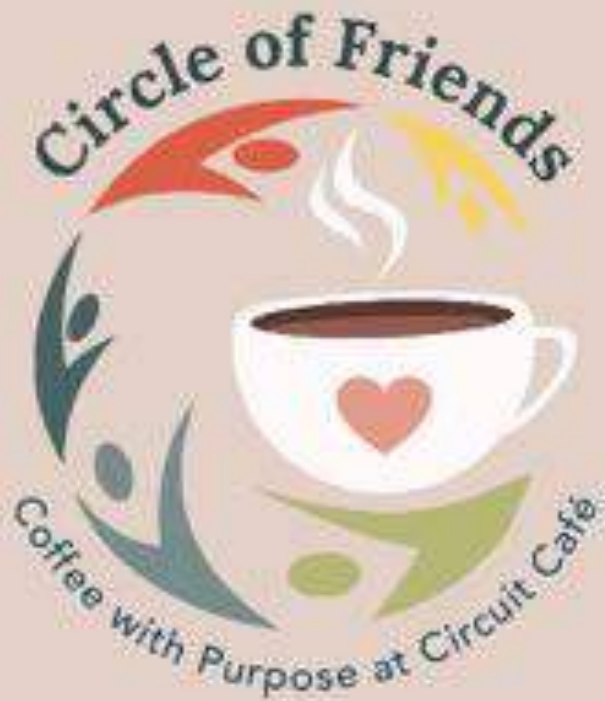
Q29: What is your loved one's monthly housing budget?

ANSWER CHOICES	RESPONSES	
I don't know	76.09%	35
Fill in:	23.91%	11
TOTAL		46



- Introduction ●
- Adults with an IDD ●
- Family Member** ●
- Community Member/Other ●

- Answered: 46 Skipped: 33



Providing supportive employment for young adults with intellectual and developmental disabilities. Fostering appropriate and supportive employment opportunities for young adults to gain valuable skills and earn a fair wage through mentoring relationships.

WHY IS INCLUSIVE DESIGN IMPORTANT?

Accessibility for All

- Community for individuals of all abilities and age
- Accommodate individuals with disabilities, created a great place for all

Social and Mental Health

- Ability to live “alone” and make money at the coffee shop
- Intergenerational and diverse abled community – feeling part of a community
- Access to therapy
- Access to nature

Economics

- Coffee shop
- Buying power of individuals living alone

**FULTON COUNTY ARTS & CULTURE
DISABILITY STUDY:
FINDING NEW OPPORTUNITIES FOR INCLUSION
IN THE ARTS**

BUILDING INCLUSIVE COMMUNITIES

“This study seeks to identify barriers to accessibility for individuals with disabilities in fully utilizing performing arts facilities and assisting in developing best practices for engaging artists with disabilities. Our goal is to encourage venues to move beyond ADA compliance and center equitable accessibility as a guiding approach from construction through to operation.”

Project goals

- **Equity** – Center people with disabilities in every phase of the project. The project should be a case study on how to appropriately engage the disabled community in performing arts, with a particular focus on back of house access.
- **Process** – This project should provide a framework for how other municipalities and organizations can study their performing arts facilities.
- **Leadership** – The document should encourage other municipalities and organizations to follow similar processes.

Demographic information - employment

5.9% of all employed workers
identify as disabled

6.8% of Artists and Related workers
identify as disabled

8.1% of Musicians, Singers
and Related Workers identify as
disabled

12.6% of individuals identify as
disabled

(American Community Survey 2018)

SURVEY SUMMARY

Responses: 56

43.6% of participants identify as having a disability

65.5% of participants directly involved in performing arts

65.5% Female, **23.6%** Male, and **9.1%** Non-Binary participants

Ages 18 to 65+ represented

Survey Responses

- “Recognizing that access goes beyond the ADA. Assuring that a performance space is fully accessible - onstage, backstage, production areas, lobby, restrooms, variety of seating choices”
- “Ensure the majority involvement of persons with disabilities in the formation, evaluation and final application of this study since it is ostensibly for this audience”
- “Everything needs to be created with the idea that anyone who wants to participate can regardless of disability or income.”
- “How the arts can provide programming TO this audience. In other words, meet them where they are”
- “Fulton County should take heed of the work of emerging + established disability arts professionals to ensure that local programming not only includes but welcomes disabled audiences and artists”

Site Visits

Center for Puppetry Arts



Dad's Garage



7 Stages



Theatrical Outfit



West End Performing Arts Center



The Rialto



Ferst Theatre



general inclusive recommendations for local governments

Government Arts and Culture Department

Focus on follow-up and follow through

- Take lead in ADA Compliance
- Funding linked to ADA Compliance
- Accessibility Certification
- Accessibility Locations
- Economic Impact Reports
- Percentage of Construction to Accessibility
- Dedicated funding/grants for accessibility upgrades



general inclusive recommendations for Employers

Venues

- Staff training
- Disability Centered
- Accessibility-Focused Performances
- Staff and Leadership Diversity
- Public Transportation
- Provide Clear Accessibility Information Upfront
- Inclusivity in All Programming
- Assist in Providing the Right Access
- Funding



WHY INCLUSIVE DESIGN

Accessibility for All

- Accessible arts can show representation and a sense of pride in the community
- Allows for equal access of every interested individual as patrons of the arts
- Inspire future generations to become working artists and staff members
- Leverage the arts as an opportunity to encourage accessibility in other fields

Social and Mental Health

- Art has positive impacts on mental health and well-being and can reduce stress and anxiety, and increase self-esteem
- Creates an inclusive space where all can participate in the arts and feel welcome
- Arts can serve as a way for individuals to be acquainted with the greater community.

Economics

- Spending power of the arts – inaccessible spaces are at an economic disadvantage when not everyone is able to participate
- Venues that are able to host disabled artists are at a competitive advantage

What are your experiences?

PANEL

SIZEMORE GROUP

THANK YOU

**FULTON ARTS PERFORMING ARTS
DISABILITY STUDY**

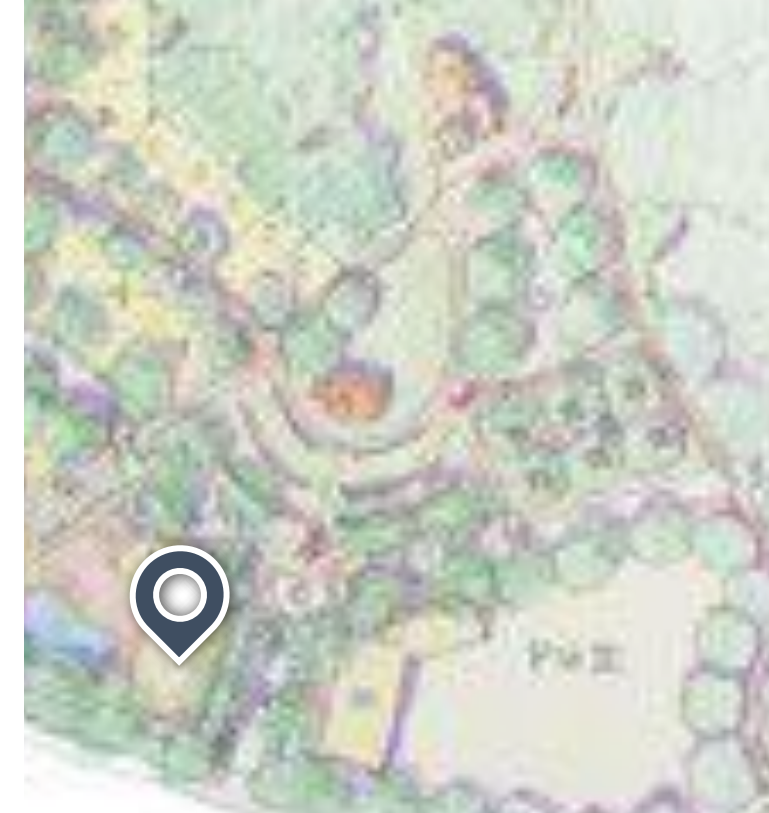


- 1. [Illegible]
- 2. [Illegible]
- 3. [Illegible]
- 4. [Illegible]
- 5. [Illegible]
- 6. [Illegible]
- 7. [Illegible]
- 8. [Illegible]
- 9. [Illegible]
- 10. [Illegible]

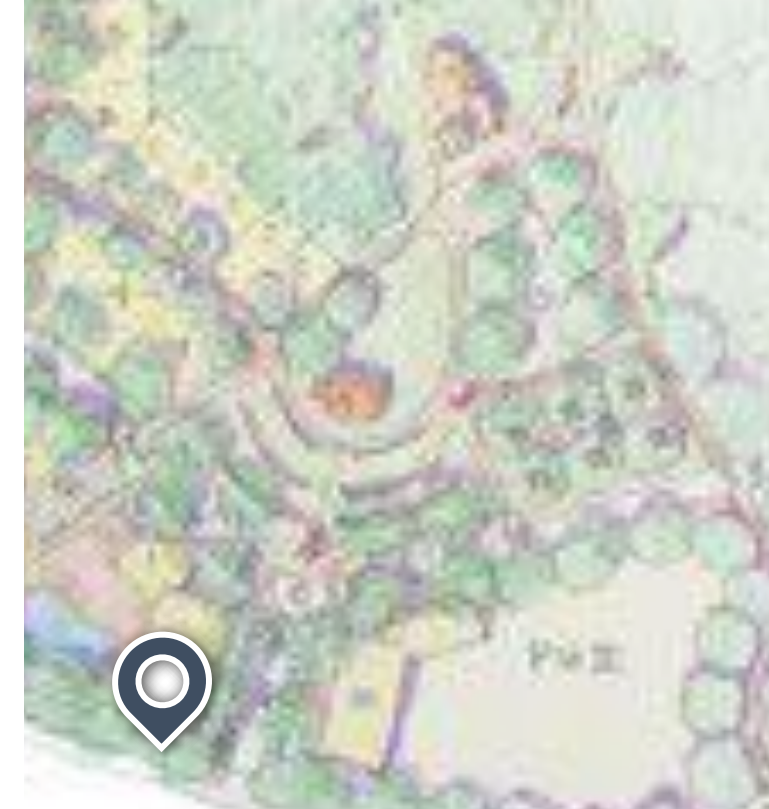
SUNNY ROAD

PARK

MAIN STREET DISTRICT



Community Building



Mural Wall



Coffee Shop



Chapel



COMMUNITY GARDEN DISTRICT



Pool



Community Garden



Larger Homes



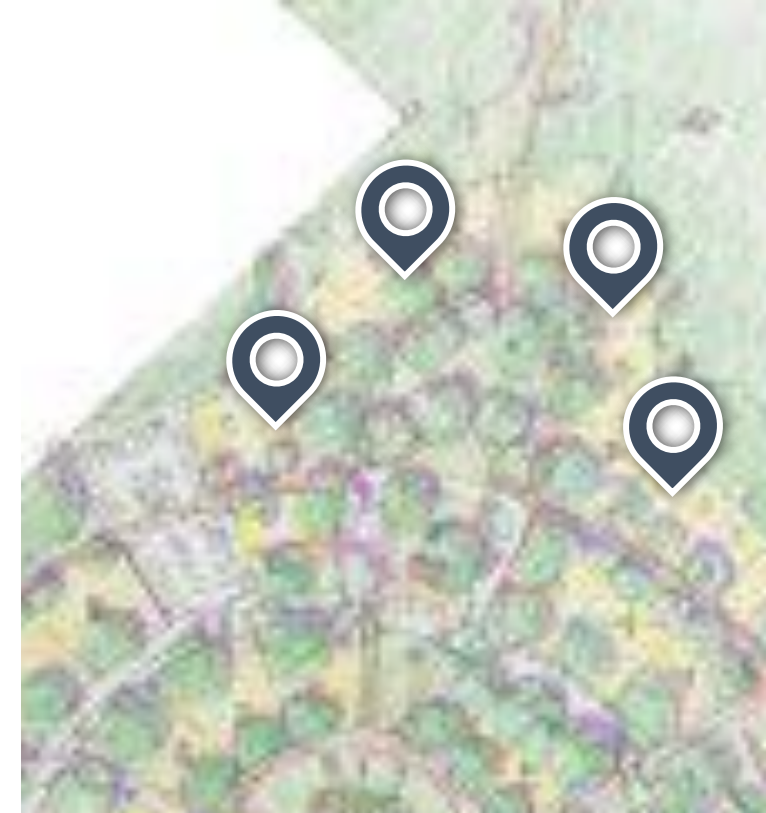
DOG PARK DISTRICT



Dog Park



Nature Trails



Smaller Homes