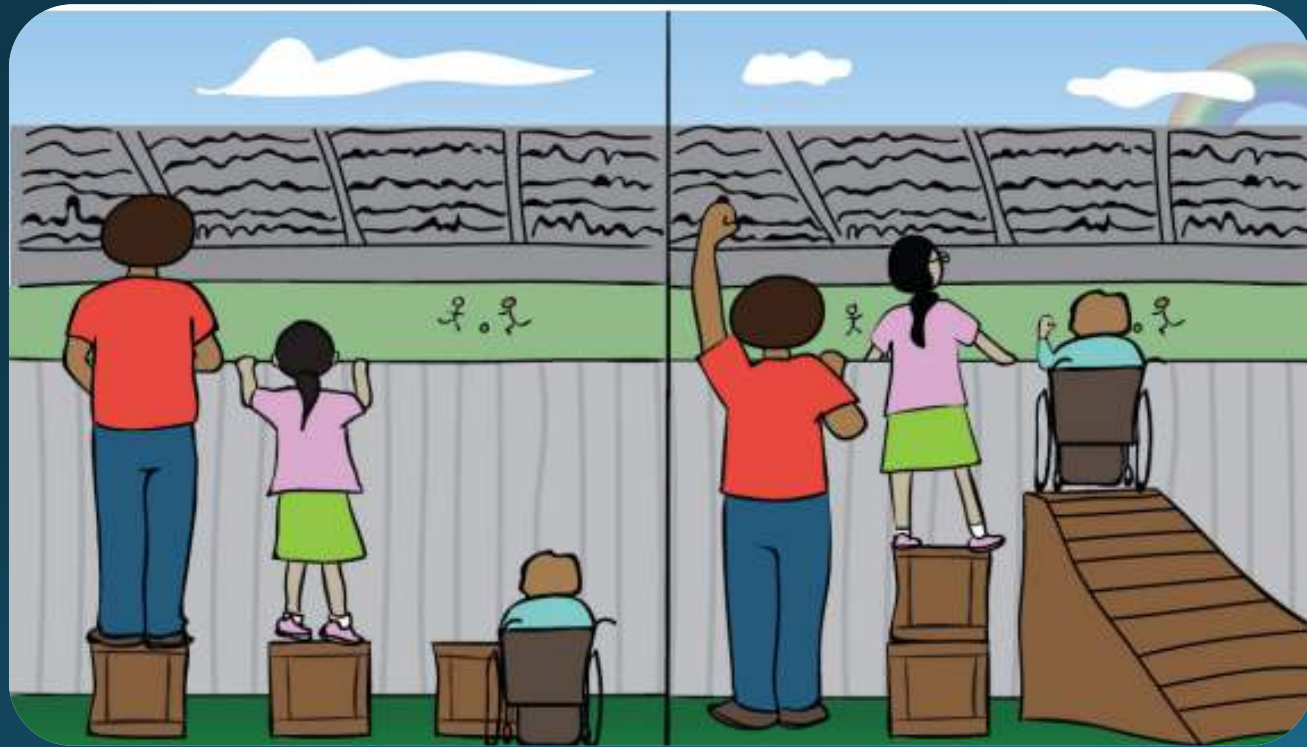


# Equity in Transportation



David Grachen  
Senior Environmental Manager  
Edwards-Pitman Environmental Inc.

Georgia Planning Association  
Fall Conference  
September 14, 2022



### **A MESSAGE FROM THE SECRETARY**

... Ensuring equity and accessibility for every member of the traveling public is one of the Department of Transportation's highest priorities.

... As we continue to advance this work, it's important to recognize that past federal transportation investments have too often failed to address inequities, or even made them worse.

... This Equity Action Plan is a major milestone for the Department of Transportation that represents a shift in how we view and deliver transportation programs. We have a long way to go toward creating a truly equitable transportation system.

... Done right, transportation policy can help level the playing field. It can transform economies, connect people to opportunity, and empower underserved communities to build generational wealth for the future.



## Implement Covered

On August 18 below to learn

### Federal Hi

1. [Carbon](#)
2. [Chargir](#)
3. [Conges](#)
4. [Conges](#)
5. [Disadv](#)
6. [Nation](#)
7. [Nation](#)
8. [Nation](#)
9. [On the](#)
10. [Promo](#)  
[Formul](#)
11. [Protect](#)
12. [Reduct](#)
13. [Transp](#)
14. [Tribal F](#)
15. [Tribal T](#)
16. [Tribal T](#)  
[and Co](#)
17. [Tribal T](#)

The list of Justice40 covered programs are being released in groups of agencies over the coming weeks. Agencies that have released their covered programs include:

- [Army Corps of Engineers](#) ↗
- [Corporation for National and Community Service / AmeriCorps](#) ↗
- [Department of Agriculture](#) ↗
- [Department of Energy](#) ↗
- [Department of Homeland Security/Federal Emergency Management Agency](#) ↗
- [Department of Housing and Urban Development](#) ↗
- [Department of the Interior](#) ↗
- [Department of Health and Human Services](#) ↗
- [Department of Labor](#) ↗
- [Department of Transportation](#) ↗
- [Department of Veteran Affairs](#) ↗
- [Environmental Protection Agency](#) ↗
- [Appalachian Regional Commission](#) ↗
- [Delta Regional Authority](#) ↗
- [Denali Commission](#) ↗



nks

ion

The full list of Justice40 covered programs is available, [here](#).



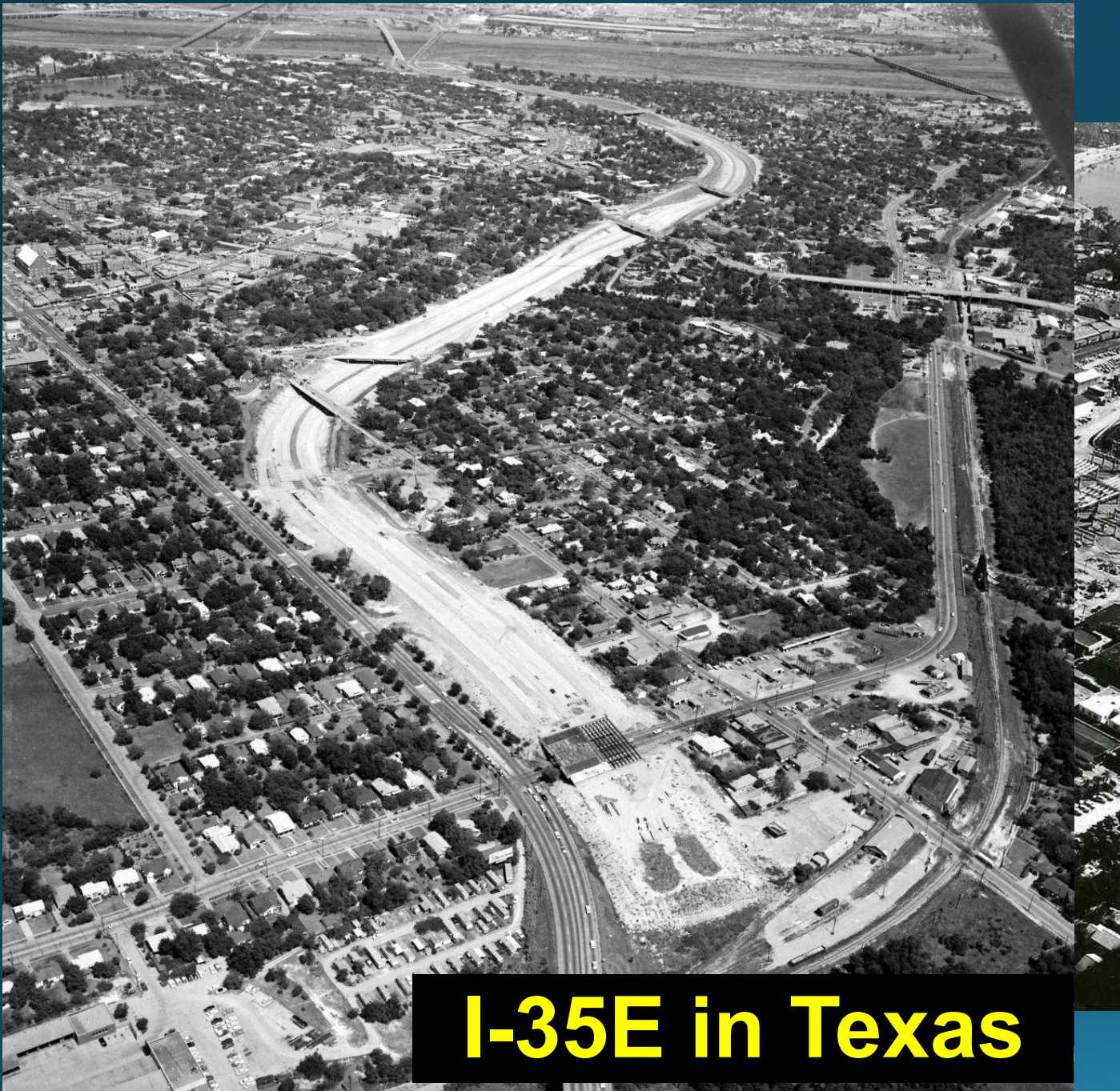
# Transportation Project Development



# Interstate Construction History







**I-35E in Texas**

# Interstate Construction

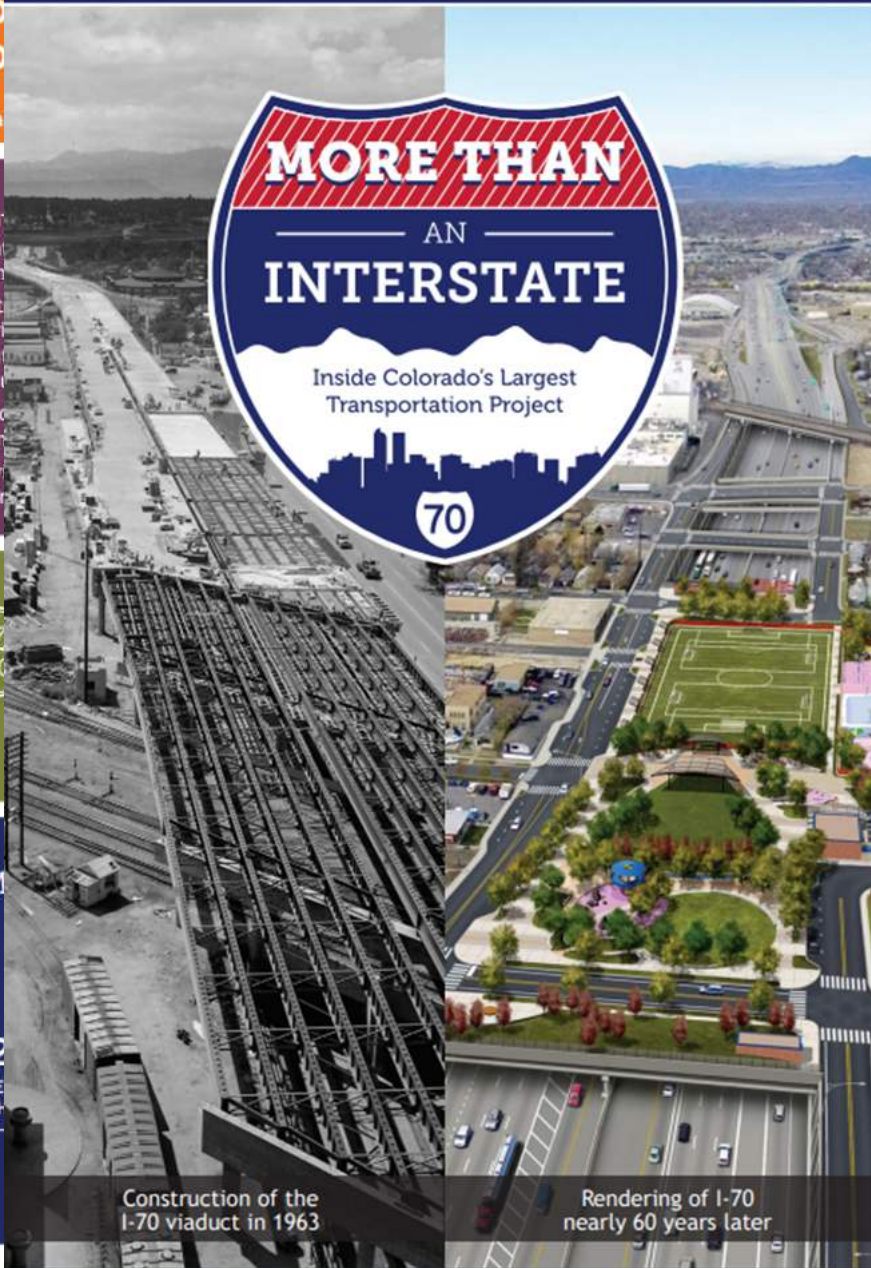
That was then.



# This is now?

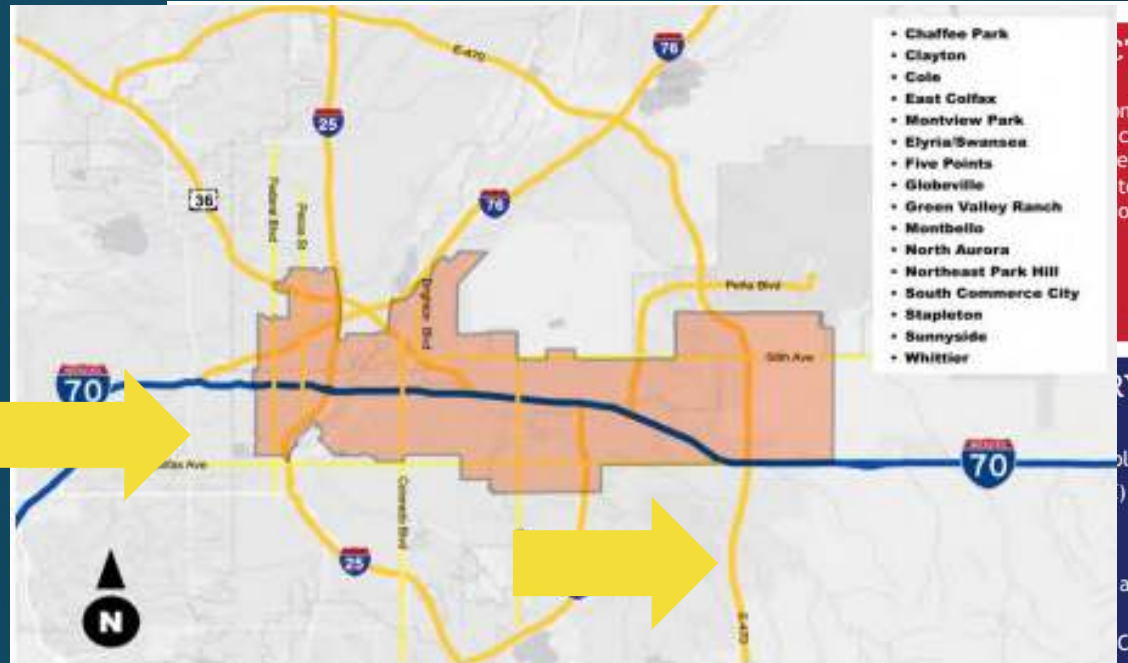






Construction of the I-70 viaduct in 1963

Rendering of I-70 nearly 60 years later



Ce  
Co  
Co

Janua

- CDO
- ident
- of th
- Rent
- mov
- mon
- can
- Resi
- finan
- Prov
- affor



IM

2

de  
ce  
ject



with  
42  
y

nts.

windows

ounted

CTS

ning  
costs  
venues  
to help  
on.

RY

pleted

and  
CE



# Newton Pike Extension - KY



Kenneth Demus photographed at his new home on DeRoode Street. Kenneth is the third of five generations of the Demus family to have lived in DB, now known as Davis Park. Demus became a homeowner and serves as vice president of the LCLT board of directors. He also serves as an ambassador for Grounded Solutions, a national network of CLT organizations, traveling around the country educating people about CLTs.

**PUBLICROADS**  
www.fhwa.dot.gov Spring 2022

**DOING the RIGHT THING:**  
Building a Road and Preserving a Community—  
The Newtown Pike Extension Project

**ALSO IN THIS ISSUE:**  
NEW LOOK! Guest Editorial Focuses on Equity in Transportation  
Partnering to Address Flooding, Protect Assets  
ITS-JPO Marks 30 Years of Innovation

U.S. Department of Transportation  
Federal Highway Administration



"This is a story of conflict and resolution between a government highway project and a disenfranchised, diverse, low-income, historic neighborhood that doesn't end in tragedy or frustration"



# I-94 in MN / Rondo Land Bridge



## Leader

For issues related to the highway itself, MnDOT is the leader and partners with local agencies and communities. This is the agency's primary and traditional mission. Examples include repairing pavement or addressing congestion issues on the freeway.



## Partner

For issues or situations that cross over agency disciplines or missions, MnDOT is a partner with communities and other agencies. Even though MnDOT might not be leading a conversation or an investment, the agency may be involved in important ways. Examples include bridges that cross a freeway or local roads that connect to a MnDOT road.



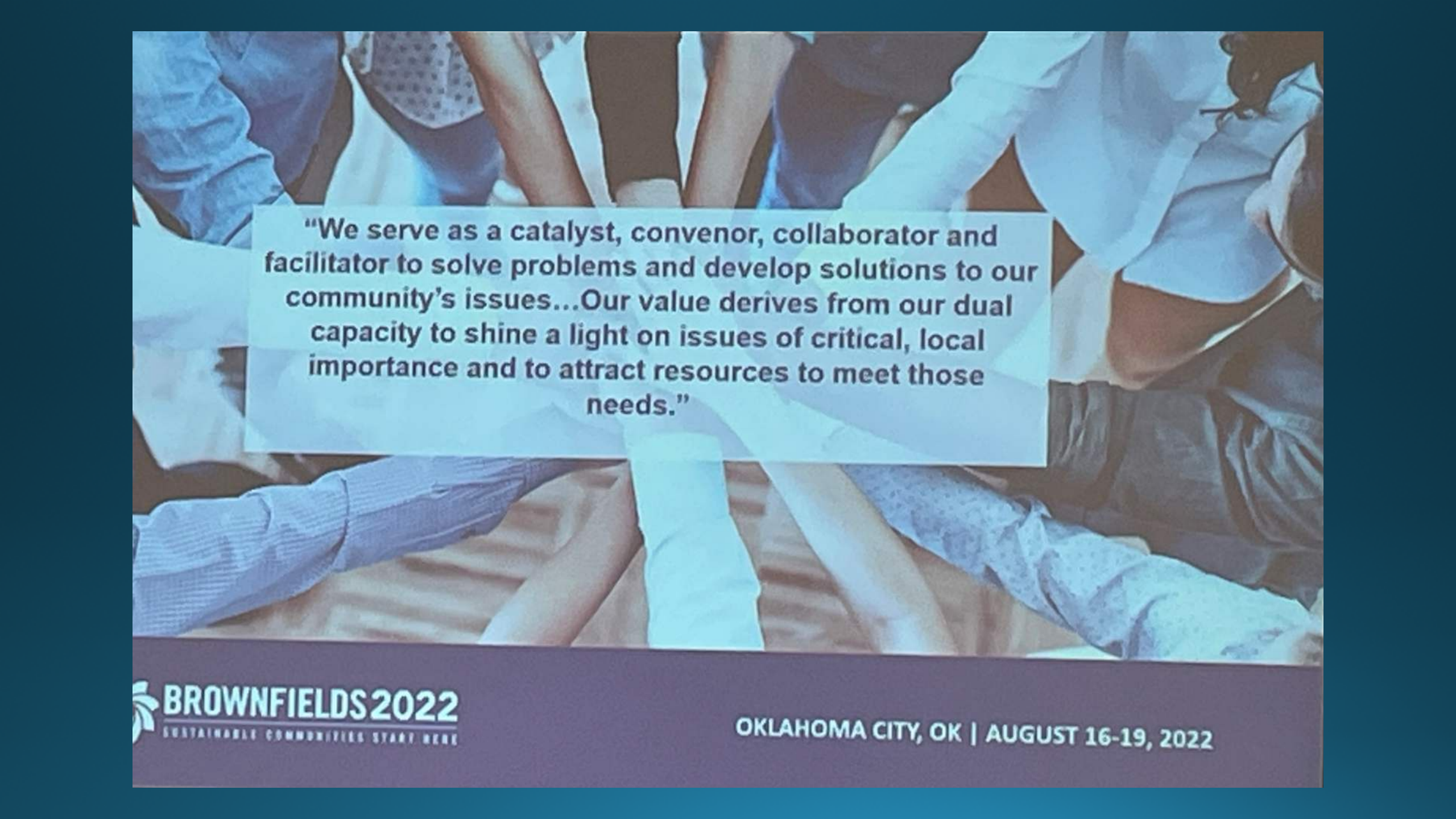
## Facilitator

While MnDOT's primary mission is focused on transportation, the department also has the capacity to assist with other issues that may arise — from local transportation issues, to housing and public health, to economic opportunity. While these are not issues MnDOT controls, the agency has a role in the broader health of its communities. MnDOT staff often know an interest who to contact at other state and local agencies for assistance.

## MnDOT's Roles

EVALUATION PROCESS





**“We serve as a catalyst, convenor, collaborator and facilitator to solve problems and develop solutions to our community’s issues...Our value derives from our dual capacity to shine a light on issues of critical, local importance and to attract resources to meet those needs.”**

# In Georgia...The Stitch

The Stitch is a proposed transformational investment that aims to reclaim approximately 14 acres of new urban greenspace atop a new, ¾ mile platform spanning the I-75/I-85 Downtown Connector between the Civic Center MARTA Center at West Peachtree Street and Piedmont Avenue.

Stated project objectives include, “Redress the long-standing physical separation characterized by largescale infrastructure, noise, pollution, and flooding in the community created by the construction of a 16-lane interstate highway.”

*“The Stitch is not unlike other projects recently completed around the country to reclaim and re-stitch large segments of urban areas that were fragmented by urban highway development.”*

<https://youtu.be/TGJQ-4ht1DU>





# In Georgia...Targeted Public Engagement

Example: GDOT Project PI 0013992, SR 520 BU Bridge over Flint River

