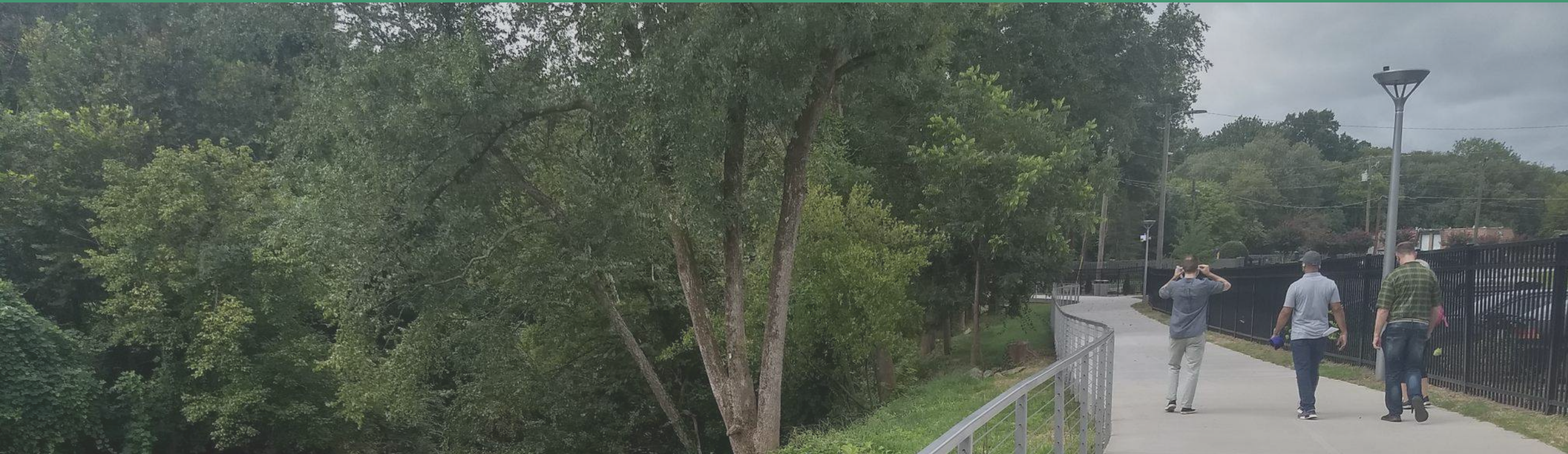


# REGIONAL TRAILS IN METROPOLITAN ATLANTA

## GPA / TAPA - 2021 Fall Conference



# ATLANTA REGIONAL COMMISSION

## REGIONAL VISION & LOCAL ASSISTANCE



# REGIONAL VISION & STRATEGY

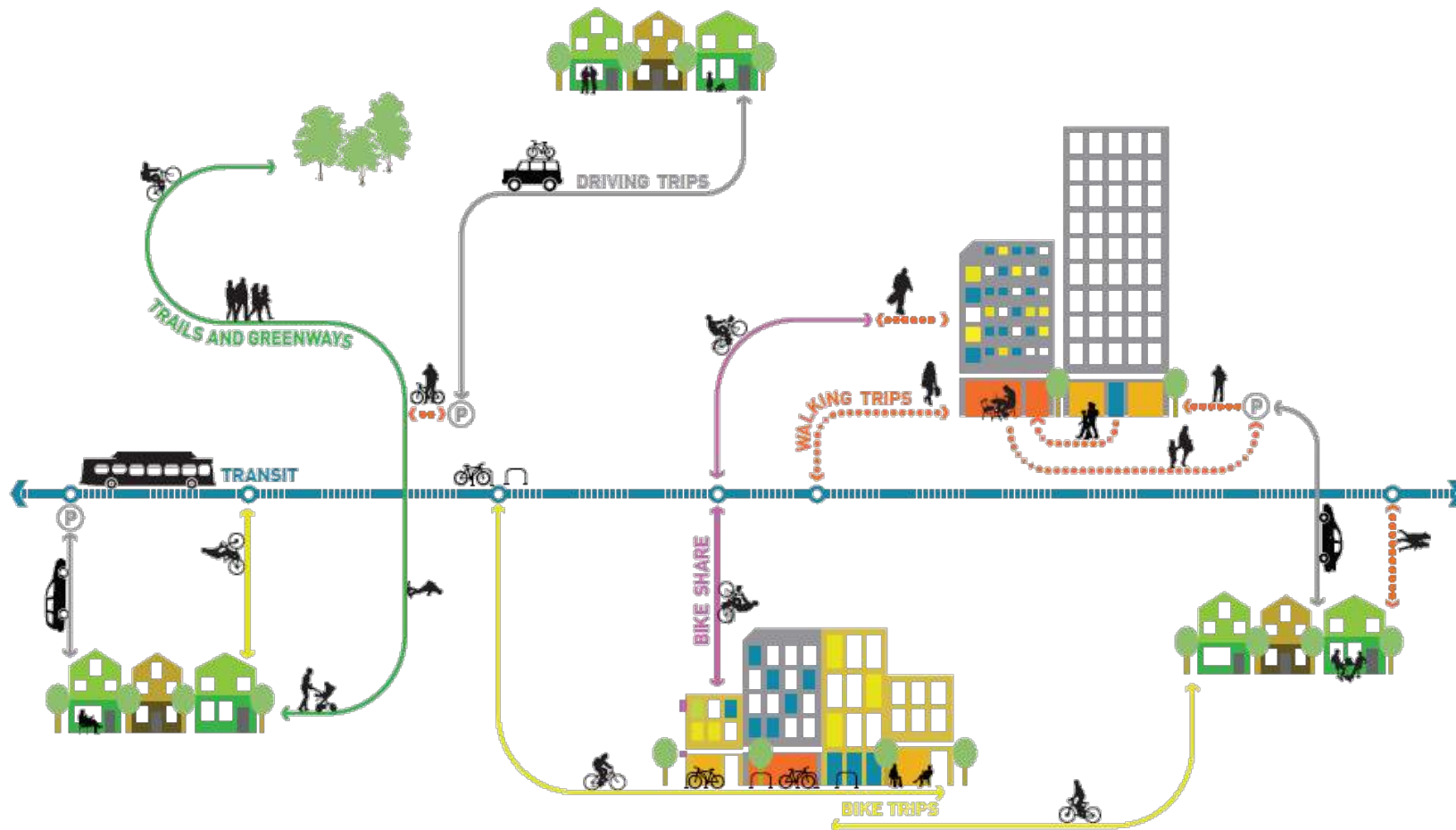
Most Americans today do not live in towns or cities in the traditional sense that we think of those terms.

Instead most of us are citizens of the region – a large and multi-faceted metropolitan area encompassing hundreds of places that we would traditionally think of as distinct and separate communities.

— Peter Calthorpe



# BUILD A REGION WHERE IT IS EASIER & SAFER FOR EVERYONE TO WALK OR BIKE!



## Focus investments to support walkable communities

A metropolitan area is boosted by having more walkable and bikeable communities. The region uses transportation and development tools to support active trips along connected street grids with access to parks, schools, commercial areas, transit service, and a mix of housing types.

## Address safety and equity issues

The region uses every investment to help decrease pedestrian and bicyclist fatalities and serious injuries as well as providing sidewalks and bikeways for populations that rely on walking and biking out of necessity.

# A MORE WALKABLE & BIKABLE METRO ATLANTA



## Connect regional trail system

Multi-use paths and trails serve as comfortable “walking and bicycling superhighways” at a regional scale. The region develops partnerships between state, local, and non-profit organizations to make critical regional trail connections.

## Improve access to transit

Longer regional trips are best served by walking and bicycling combined with transit. The region works to improve walking and biking access to transit stops and improve the quality and quantity of regional transit service.

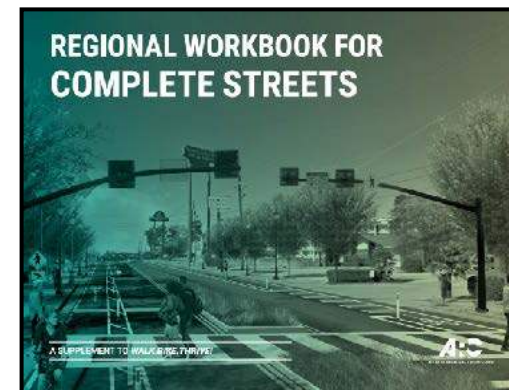
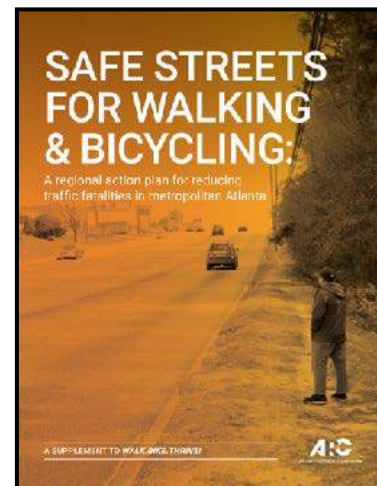
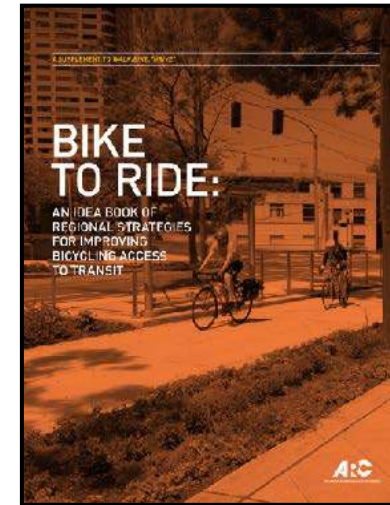
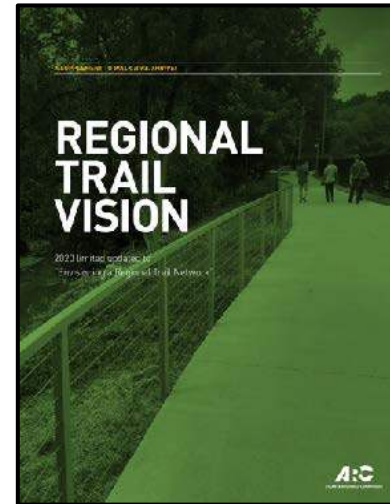
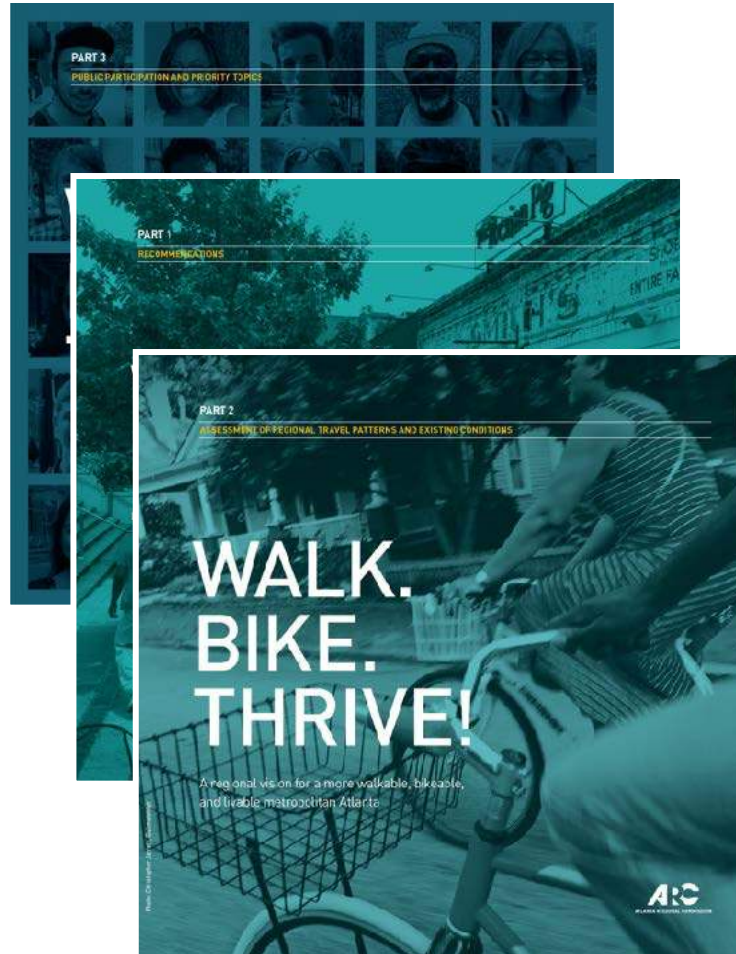
## Build complete streets

Walkable communities are best supported by complete streets. Suburban arterial roads need to be multi-modal thoroughfares. The region identifies barriers to walking and biking and relentlessly works to address them as opportunities arise.



# WALK. BIKE. THRIVE!

## REGIONAL PLANS, DATA ATLAS, & RESOURCES



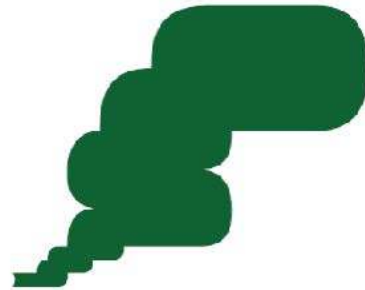
# WHY: REGIONAL BENEFITS

## QUALITY OF LIFE & MEET REGIONAL GOALS



**25,026,000**

MORE MILES WALKED AND  
BIKED PER YEAR



**47,538,000**

POUNDS OF CO2 EMISSIONS  
REDUCED PER YEAR



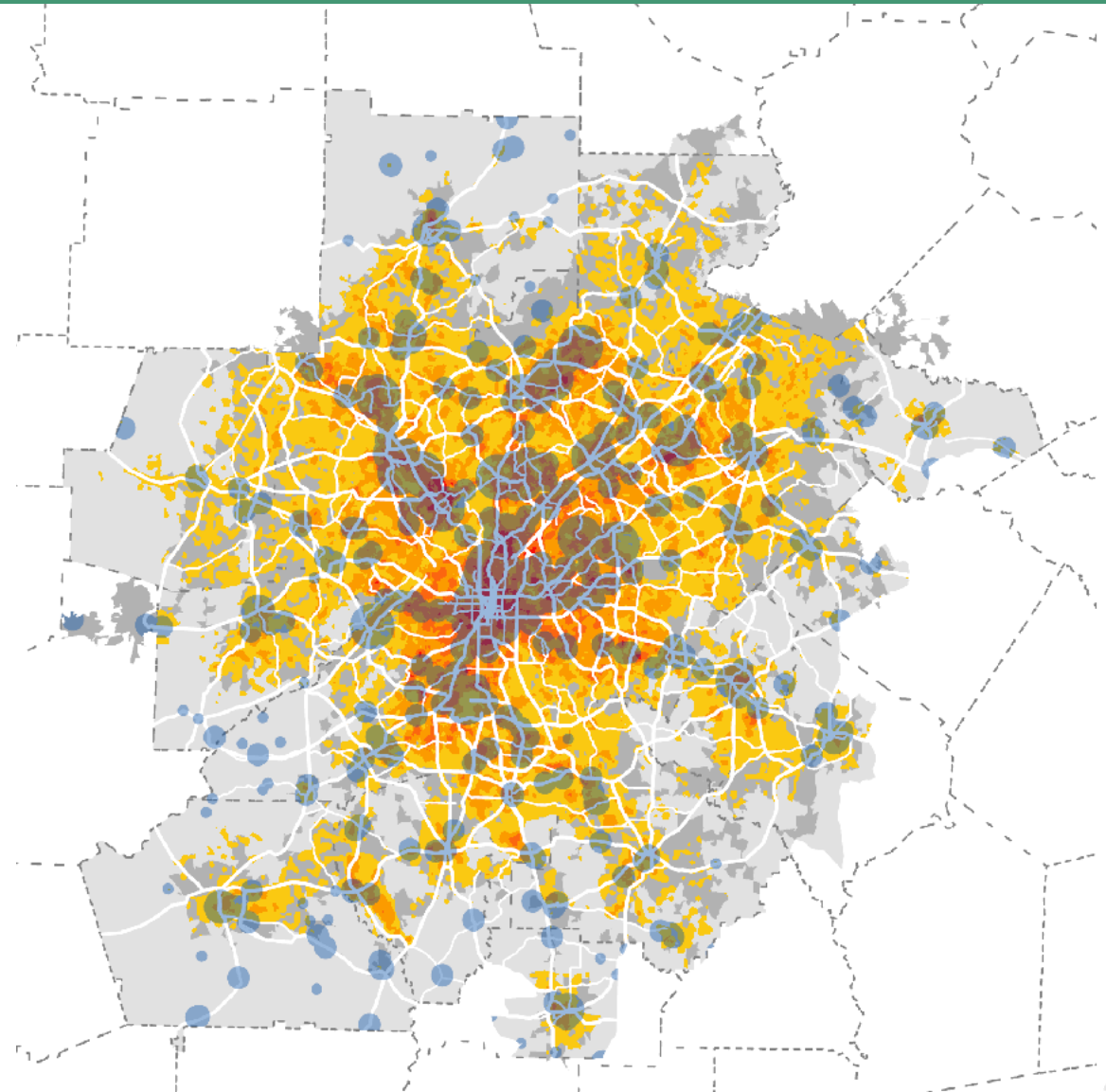
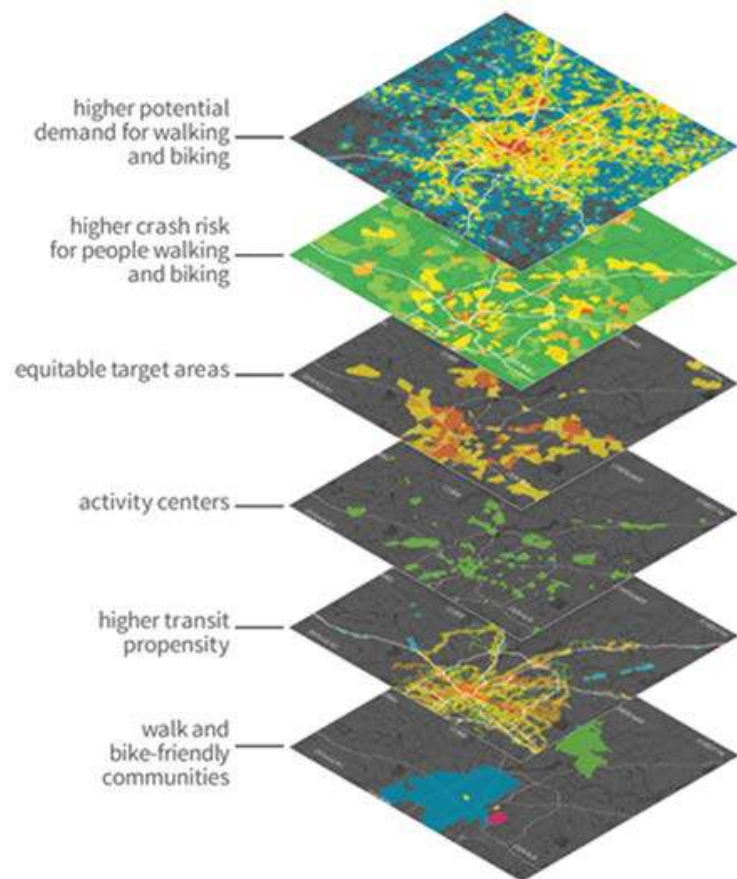
**\$2,209,000**

IN REDUCED TRAFFIC  
CONGESTION COSTS PER YEAR



# HOW: STRATEGIC REGIONAL PLANNING

## FOCUSED DATA, PLANS, & FUNDING



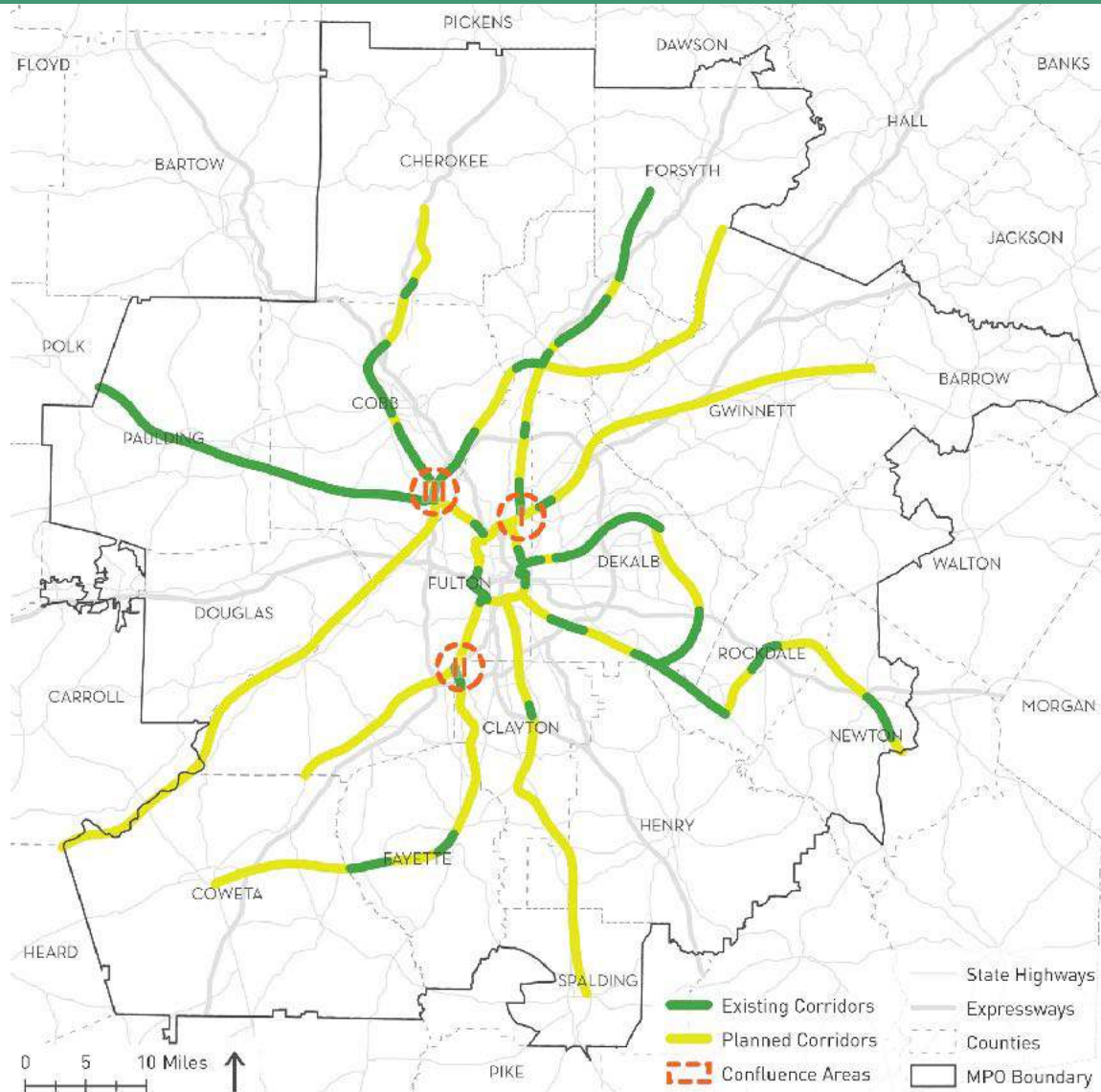
# WHO: REGIONAL COLLABORATION

## LOCAL LEADERSHIP, REGIONAL VISION



- **Regional Framework:**  
Establish regional priorities and policy related to walking and biking to guide funding and technical assistance investments.
- **Local Frameworks:**  
Support local partners in enhancing and expanding policy, programs, and infrastructure that support walking and biking.

# WHAT: REGIONAL TRAIL SYSTEM WALKING & BIKING "SUPER HIGHWAYS"



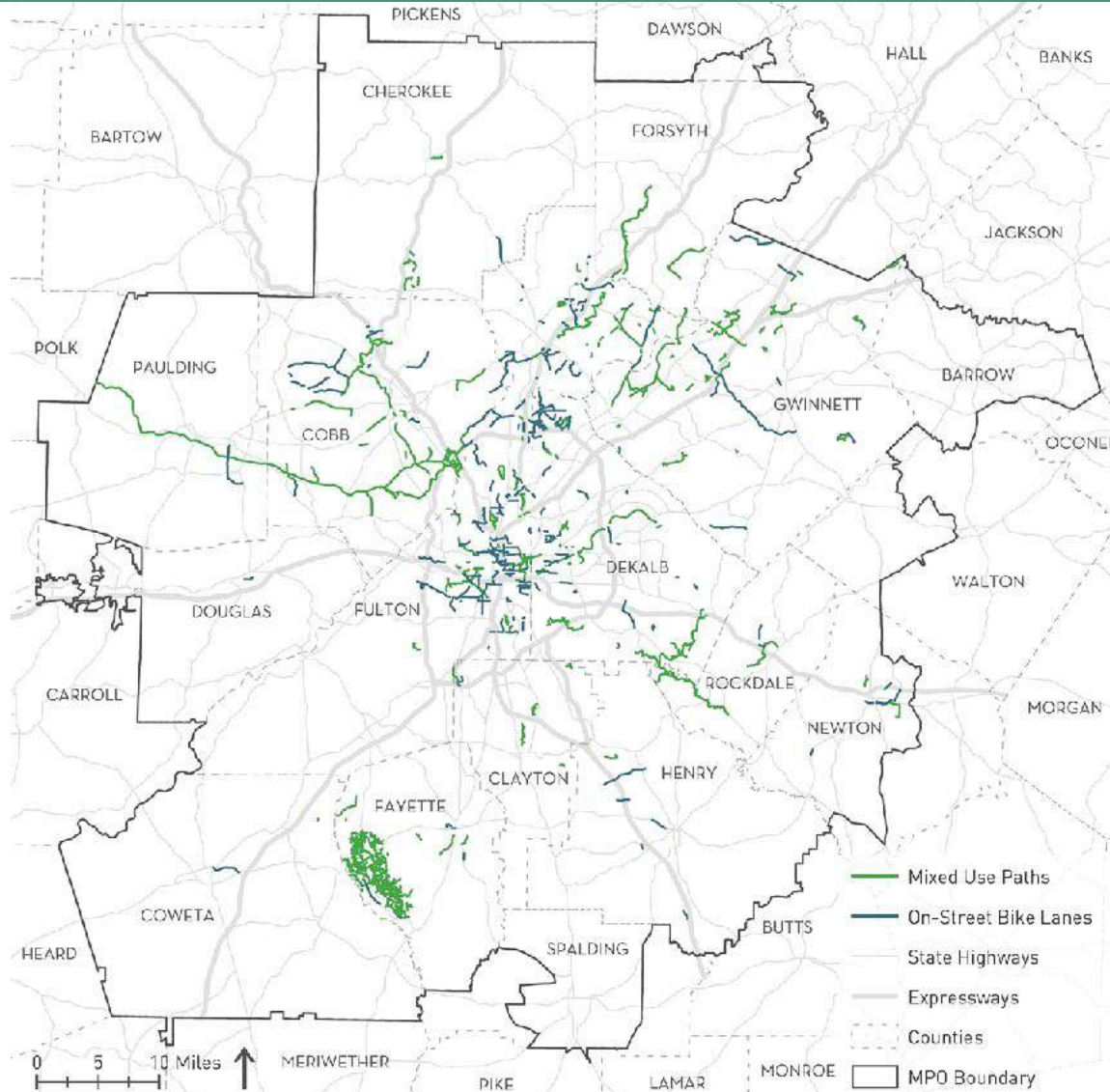
- **UPDATING EXISTING CORRIDORS WITH NEW INVENTORY DATA**
- **BETTER ALIGNING REGIONAL CORRIDORS WITH PLANNED ROUTES**
- **INTRODUCING "CONFLUENCE AREAS" FOR MAJOR TRAIL JUNCTIONS**
- **EXPANDING CORRIDORS SOUTHWARDS**

# REGIONAL PLANNING & DATA



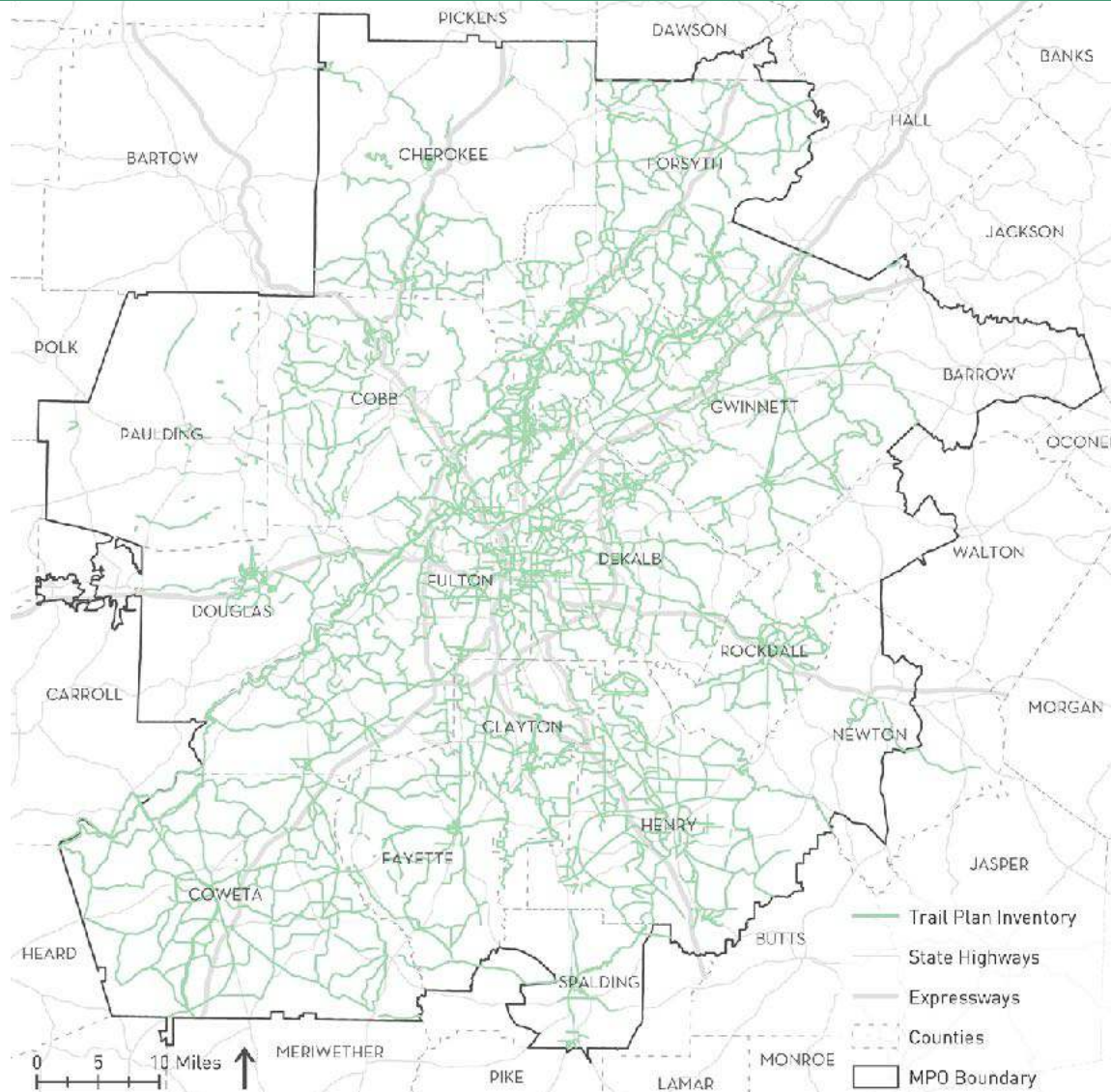
# WHERE ARE CURRENT TRAILS?

## MAINLY SUBURBAN, MOST ARE MULTI-USE PATHS



BIKEWAY	MILEAGE	%
Separated Bike Lanes	4.5	1%
Painted Bike Lanes	205	33%
Multi-Use Paths	411	66%
<b>TOTAL</b>	<b>620.5</b>	

# WHERE ARE PLANNED TRAILS? RECENT VISIONS IN ALMOST EVERY COUNTY



**METRO ATLANTA  
CURRENTLY HAS  
OVER 3,000 MILES  
OF PLANNED TRAILS IN  
ALMOST EVERY COUNTY**



# CHATTAHOOCHEE RIVERLANDS





# GWINNETT COUNTY TRAILS MASTER PLAN

## CORE TRAIL NETWORK

The Core Trail Network is composed of trail segments identified as part of the larger Countywide system and adopted for initial plan implementation. Although full implementation of the Core Trail Network may take multiple cycles, local government, current and likely funding sources, additional financial supports may be needed for implementation.

## PRIORITY TRAILS

Priority Trails are anticipated to be implemented after the Core Trail Network is realized.

## TRAILS WITH PARTNERS

Trails with Partners may be built through County development, redevelopment, or other partnerships.

## CHATTAHOOCHEE TRAIL NETWORK

The Chattahoochee Trail Network is a regionally significant trail from Coweta County north to Buford. Dam projects are expected to be implemented through a partnership among multiple agencies.

## COUNTYWIDE TRAILS

- CORE TRAIL NETWORK
- PRIORITY TRAILS
- TRAILS WITH PARTNERS
- CHATTAHOOCHEE TRAIL NETWORK

## EXISTING & FUNDED BICYCLE & PEDESTRIAN FACILITIES

- EXISTING TRAIL
- FUNDED TRAIL
- PARTIALLY FUNDED TRAIL

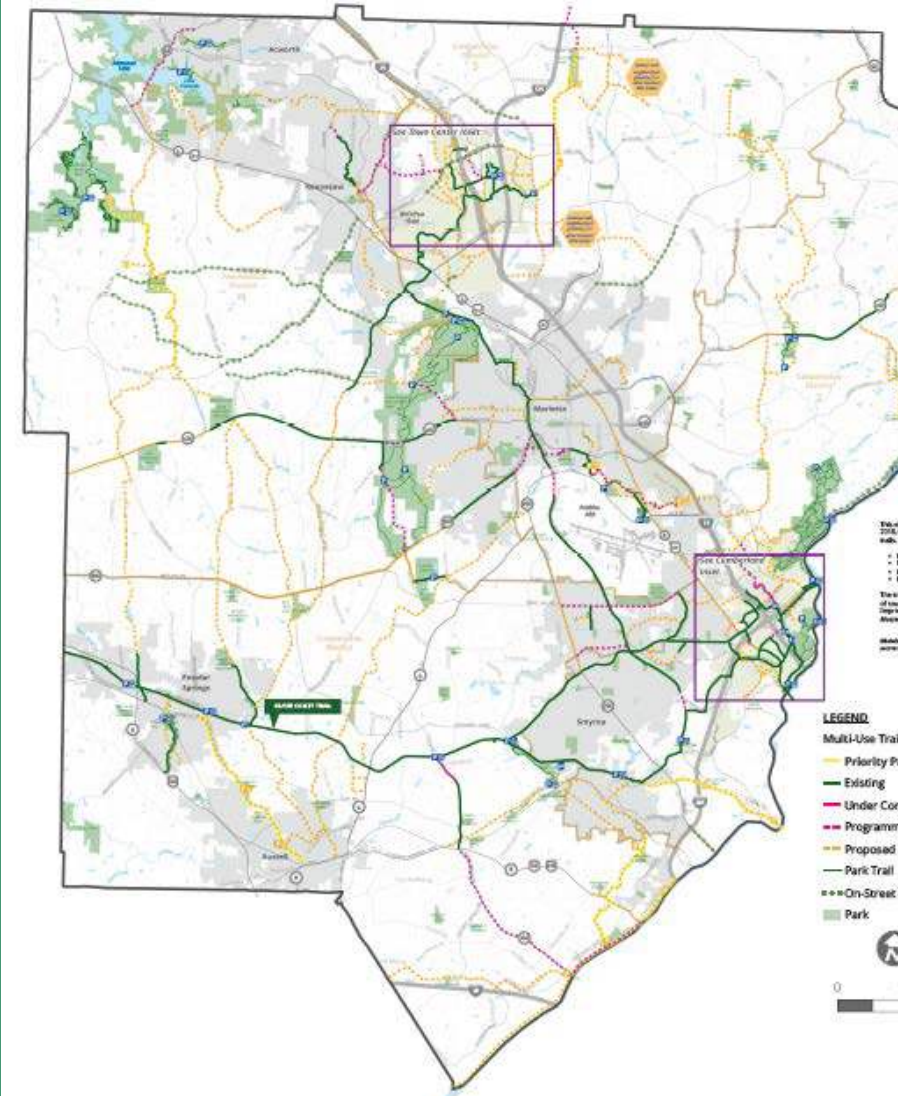


# COBB COUNTY

## GREENWAYS & TRAILS MASTER PLAN

Countywide Trail Map  
May 2018

FINAL DRAFT



This map shows the current greenways and trails network throughout Cobb County as of May 2018, by planning status. It includes existing, under construction, programmed, and proposed trails. Planning status is color-coded as follows:

- Existing - Built and open
- Under Construction - Construction in progress
- Programmed - Funding program identified for design and/or construction
- Proposed - Conceptual study for which funding has not been identified

The table below lists specific trail segments and projects in progress from a variety of sources including regional, state, and local funding. Funding, design, and construction are subject to Georgia's CDBG, as well as trails proposed as part of the OpenSpace and Park Master Plan.

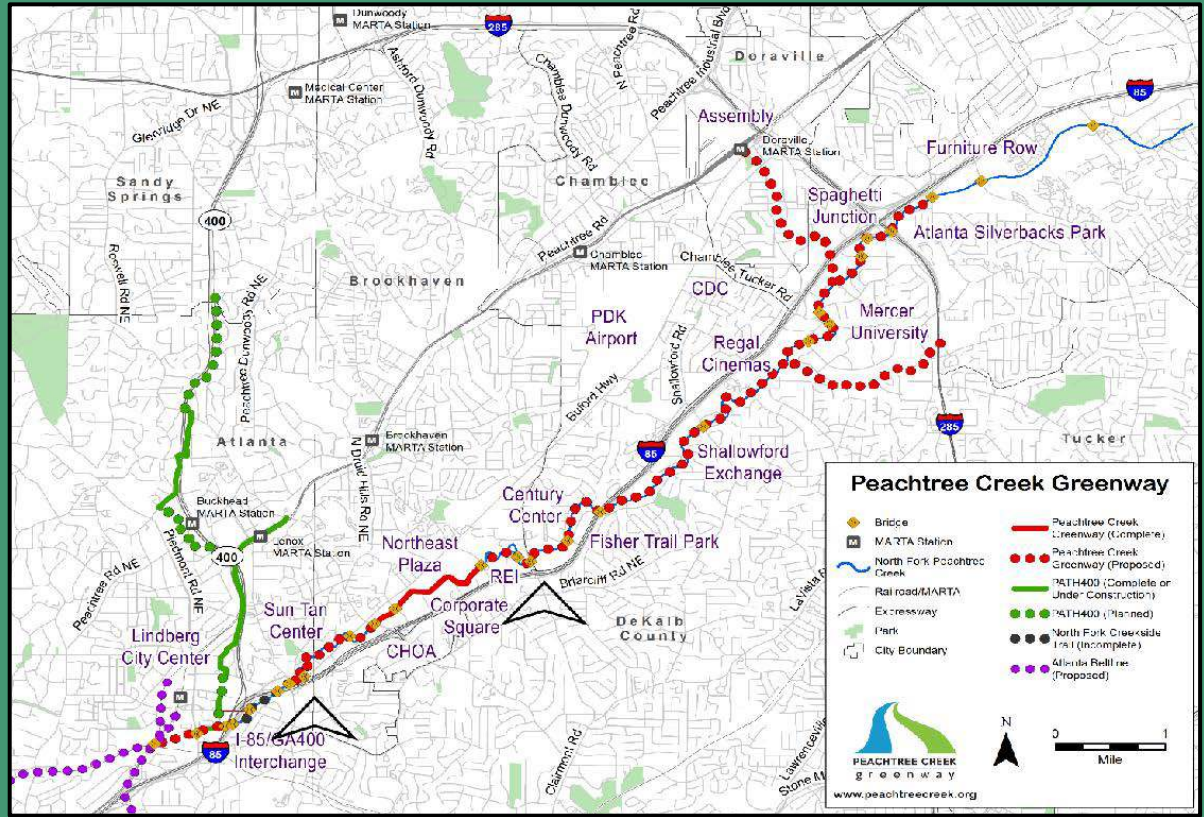
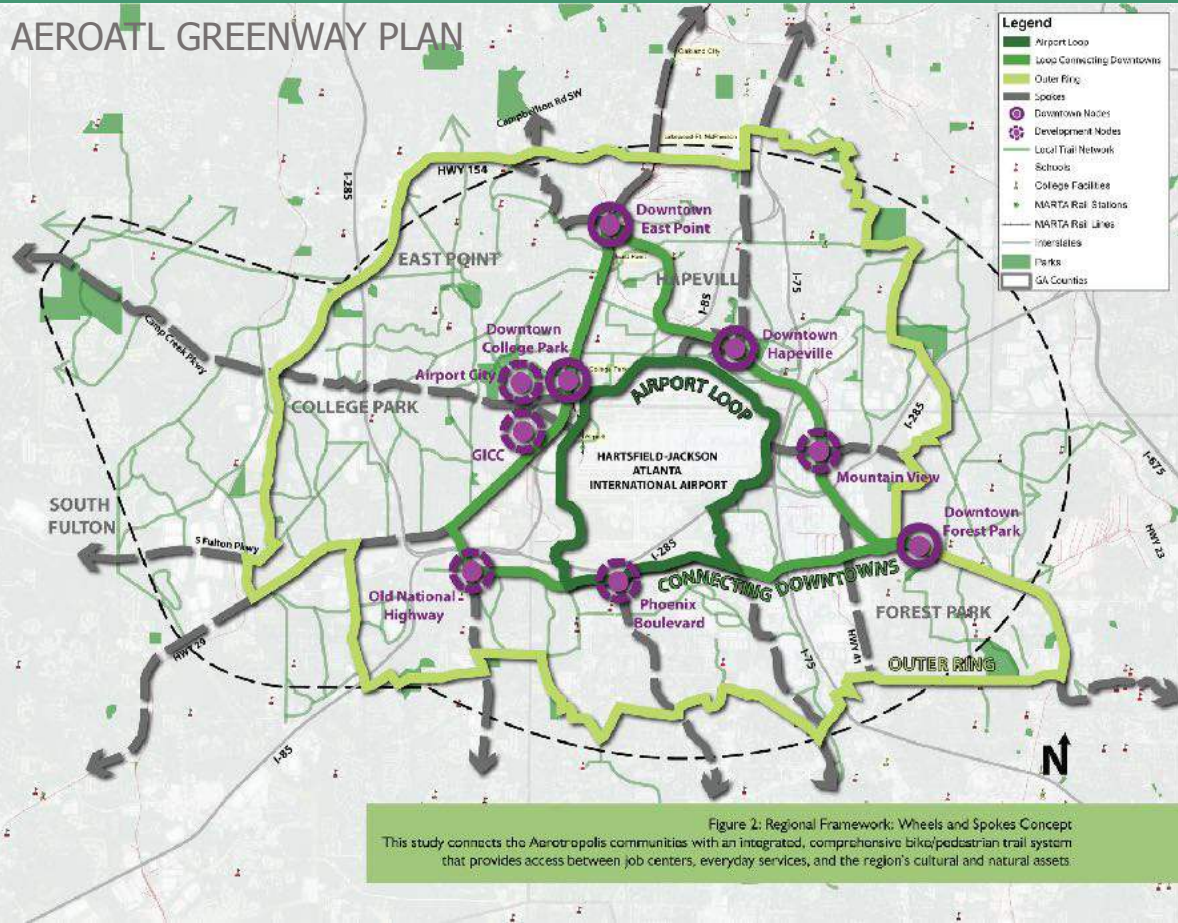
Disclaimer: This map does not constitute an official representation. Accepted agreements subject to change without notice. Study of proposed trails and other transportation-related projects is ongoing.

**LEGEND**

Multi-Use Trails	Existing Trailheads
Priority Project	Restrooms
Existing	Parking
Under Construction	Walk-Up Access
Programmed	Proposed Trailheads
Proposed	Restrooms
Park Trail	Parking
On-Street Bike Facility	Walk-Up Access
Park	City
	Community Improvement District
	Commission District

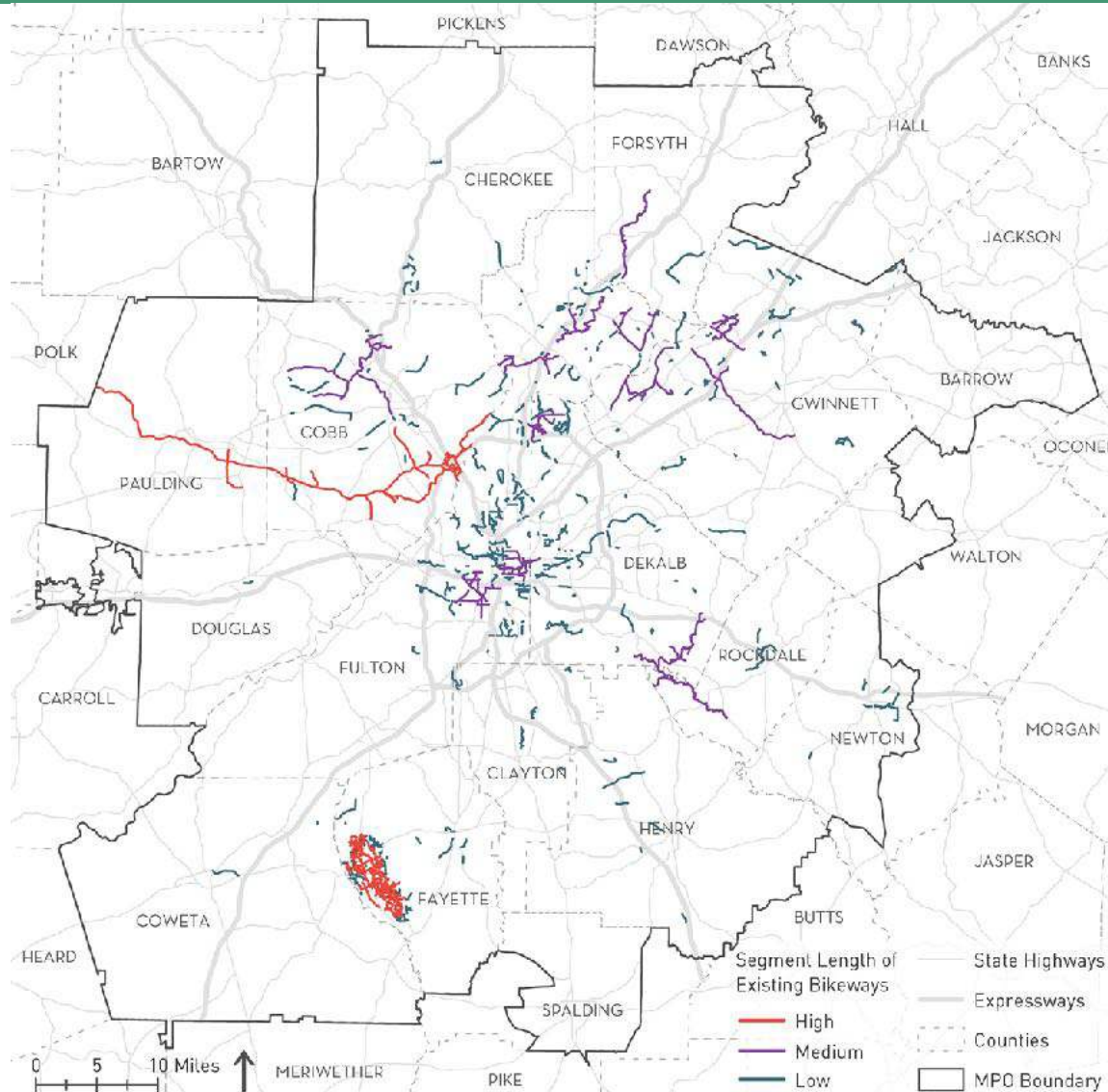


# AEROATL GREENWAY PLAN



# HOW CONNECTED ARE OUR TRAILS?

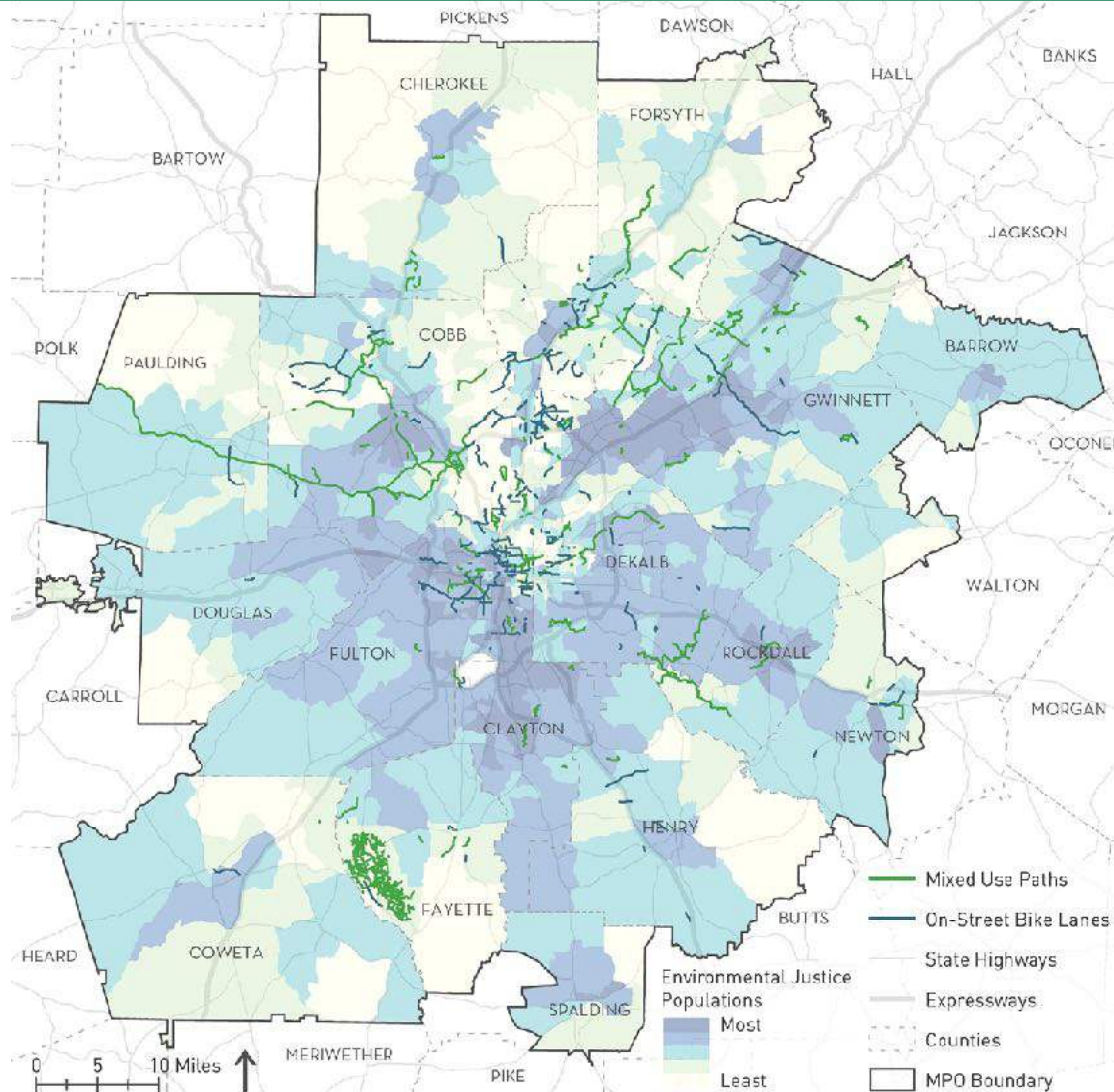
## ACCESS INFLUENCES TRAVEL OPPORTUNITIES



Bikeway Length	
Max	80.9 mi
Median	0.53 mi



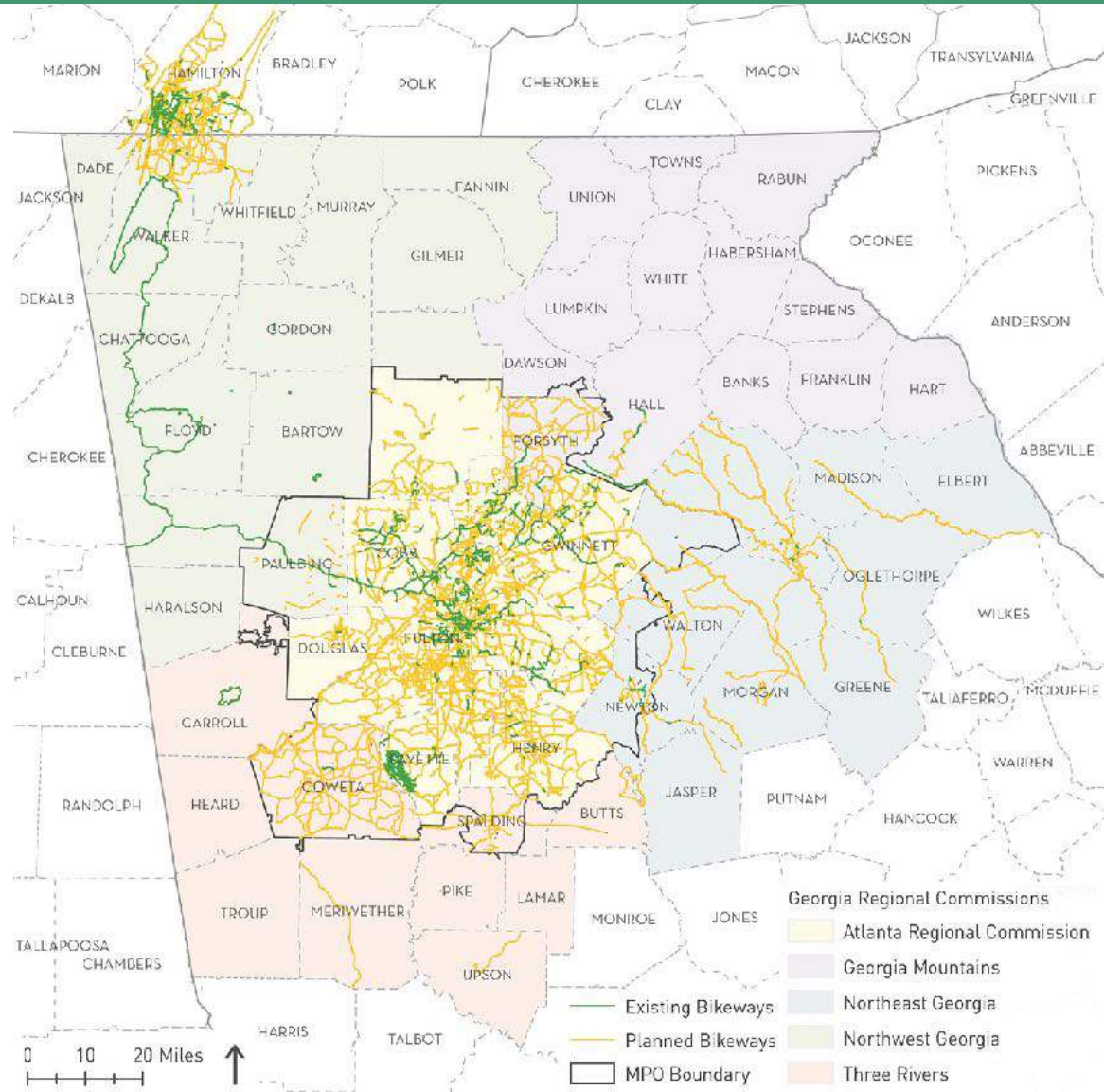
# WHO CAN ACCESS TRAILS? MAINLY WHITE COMMUNITIES TODAY



**EXPANDING THE REGIONAL  
TRAIL NETWORK CAN CREATE  
MORE OPPORTUNITIES  
to WALK, BIKE, AND  
BE ACTIVE  
FOR TRANSPORTATION  
AND RECREATION**

# A STATEWIDE TRAIL SYSTEM

## INTER-REGIONAL CONNECTIONS

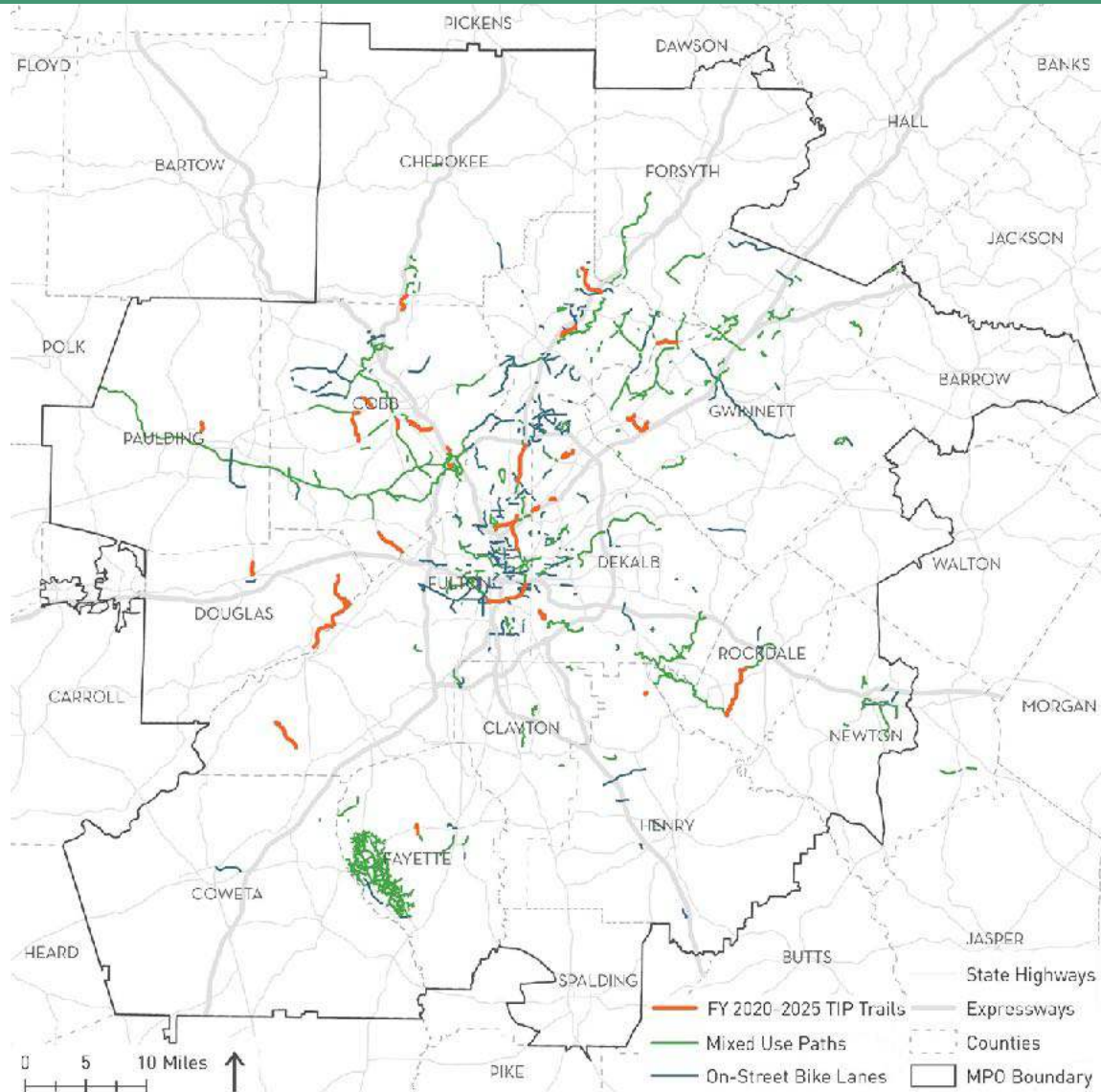


**EXPANDING THE STATEWIDE TRAIL NETWORK CAN CREATE**  
**NEW CONNECTIONS TO**  
**KEY DESTINATIONS,**  
**INCLUDING CITIES AND SCENIC AREAS**



# A REGIONAL TRAIL SYSTEM

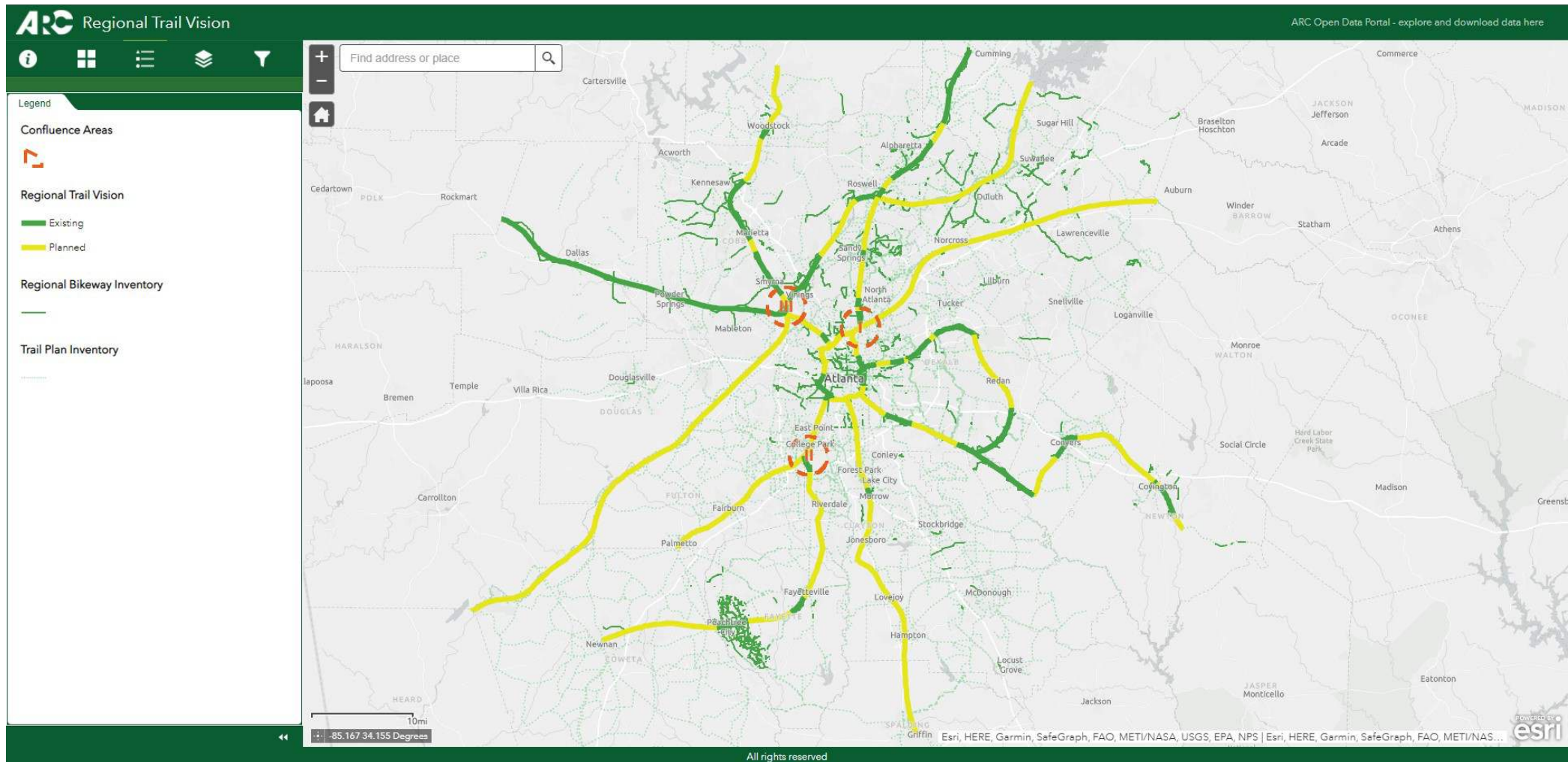
## TRAIL PROGRAMMING & COSTS



For the 29 trail projects currently in the TIP:  
**THE AVERAGE PROJECT LENGTH IS  
2.04 MILES,  
THE AVERAGE PROJECT COST IS  
\$15,658,230, AND  
THE MEDIAN PER MILE COST IS  
\$5,429,847.**

# REGIONAL TRAIL VISION

ACCESS WEB MAP AT [bit.ly/trailvision](http://bit.ly/trailvision)

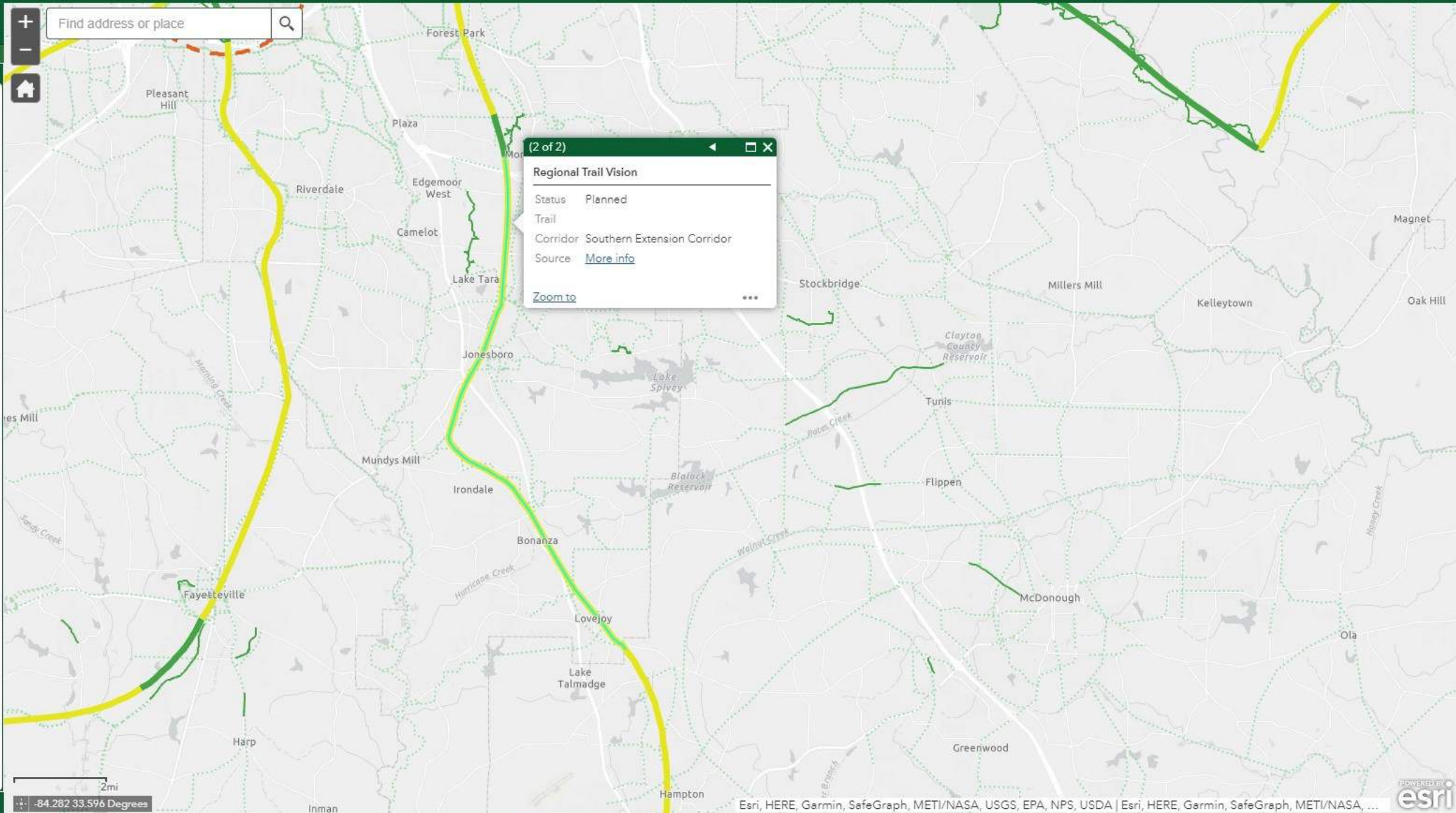




Map navigation controls: Home, Find address or place, Zoom in (+), Zoom out (-), Full screen, and a funnel icon.

**Legend**

- Confluence Areas**
  - Confluence Areas
- Regional Trail Vision**
  - Existing
  - Planned
- Regional Bikeway Inventory**
  - Regional Bikeway Inventory
- Trail Plan Inventory**
  - Trail Plan Inventory

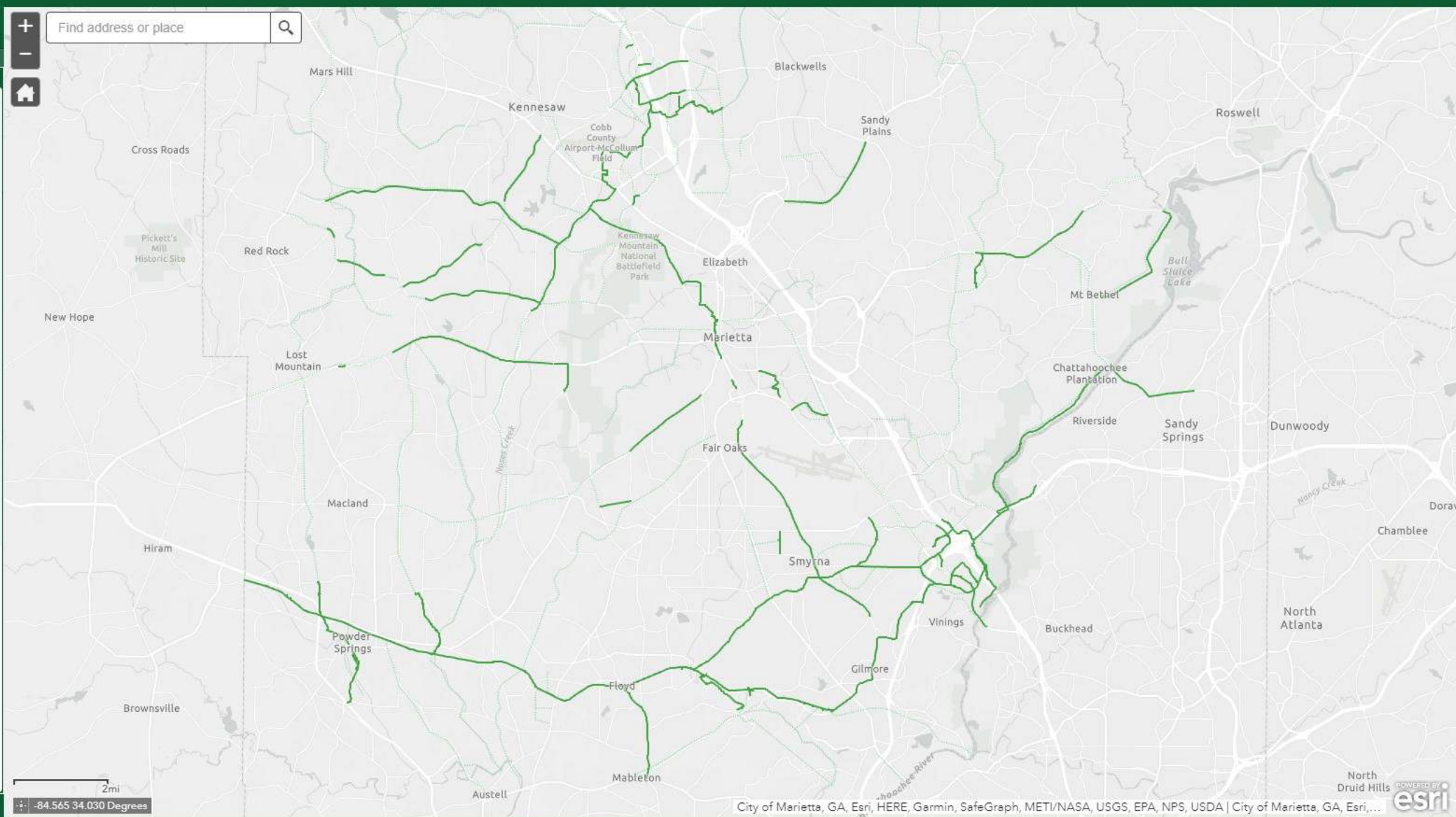


Scale: 2mi  
Coordinates: -84.282 33.596 Degrees



**Filter**

- Regional Trail Vision**   
Display existing or planned trail corridors:  
0 selected
- Regional Bikeway Inventory**   
Facility Type:  
0 selected  
County:  
1 selected  
City:  
0 selected
- Trail Plan Inventory**   
Display the following trail plan(s):  
1 selected



2mi  
-84.565 34.030 Degrees

City of Marietta, GA, Esri, HERE, Garmin, SafeGraph, METI/NASA, USGS, EPA, NPS, USDA | City of Marietta, GA, Esri,...

All rights reserved





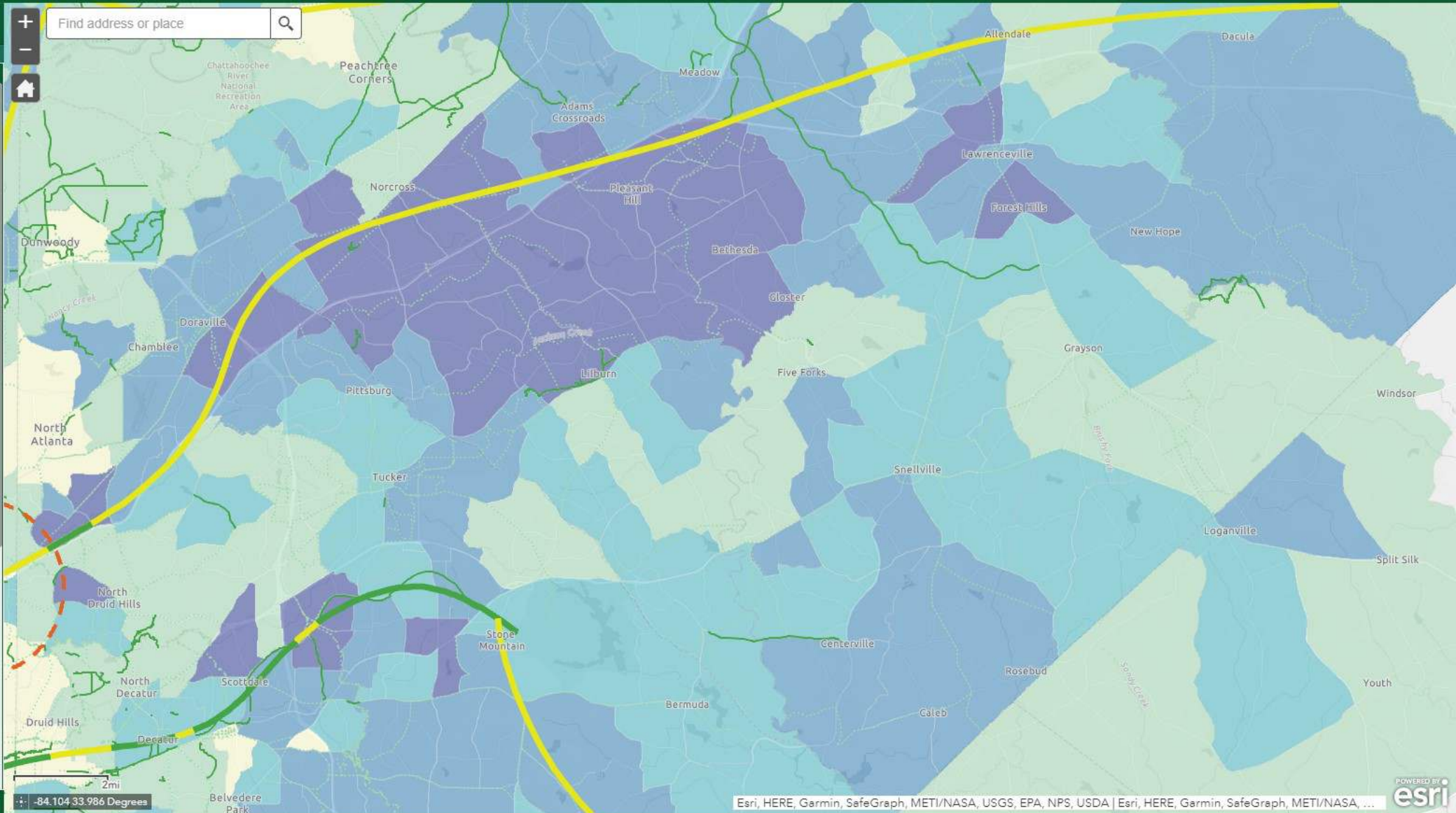


Find address or place

Layer List

Layers

- Confluence Areas
- Regional Trail Vision
  - Existing
  - Planned
- Regional Bikeway Inventory
- Trail Plan Inventory
- Urban Centers
- Equity Analysis
  - Concentration of EJ Populations
    - Most
    - Least
  - Walk Bike Propensity
    - Relative Propensity
      - > 23 - 33



2mi

-84.104, 33.986 Degrees





Find address or place

Legend

Confluence Areas



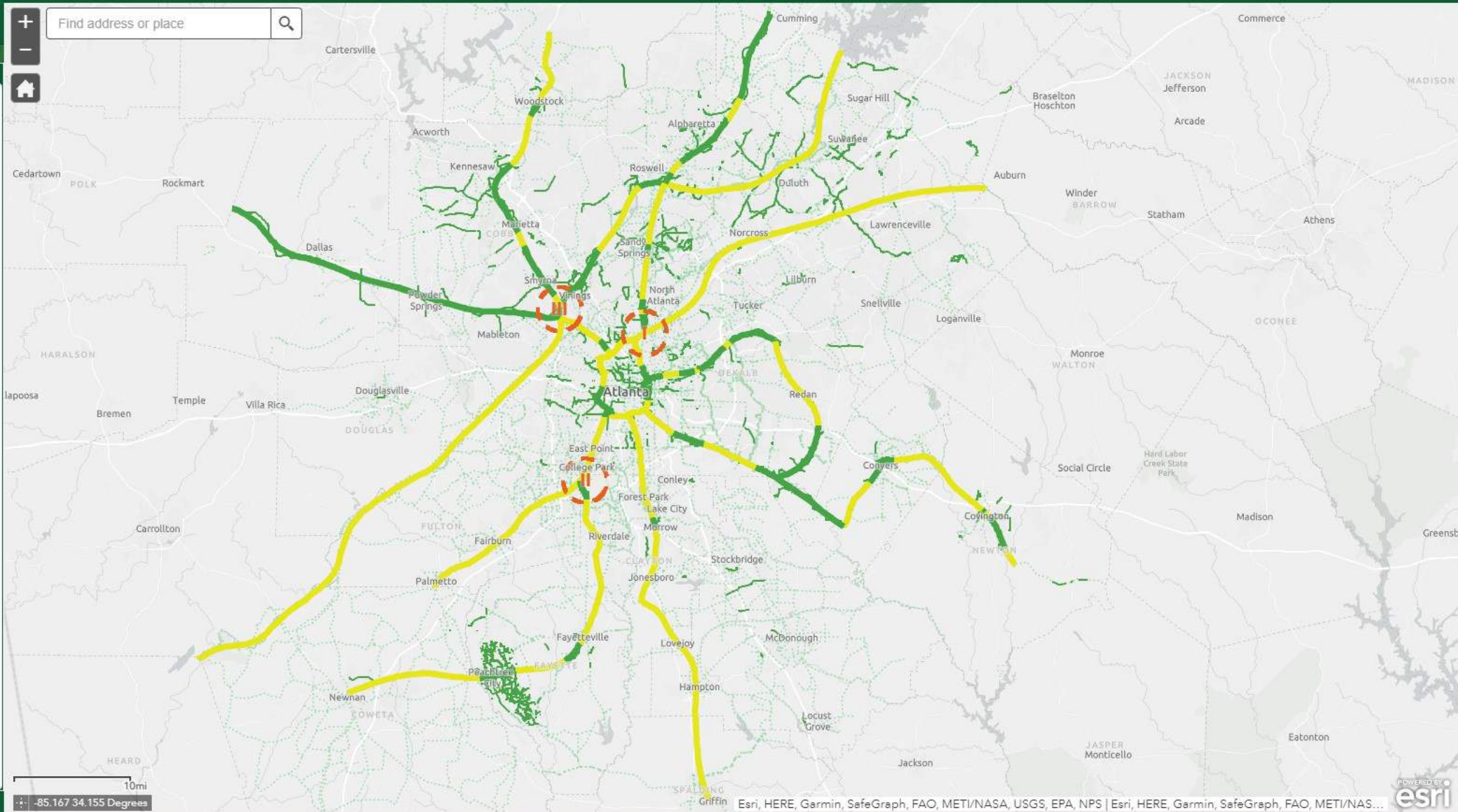
Regional Trail Vision

- Existing (green line)
- Planned (yellow line)

Regional Bikeway Inventory



Trail Plan Inventory



10mi  
-85.167 34.155 Degrees





# Development of a Trails Plan for Henry County, Georgia

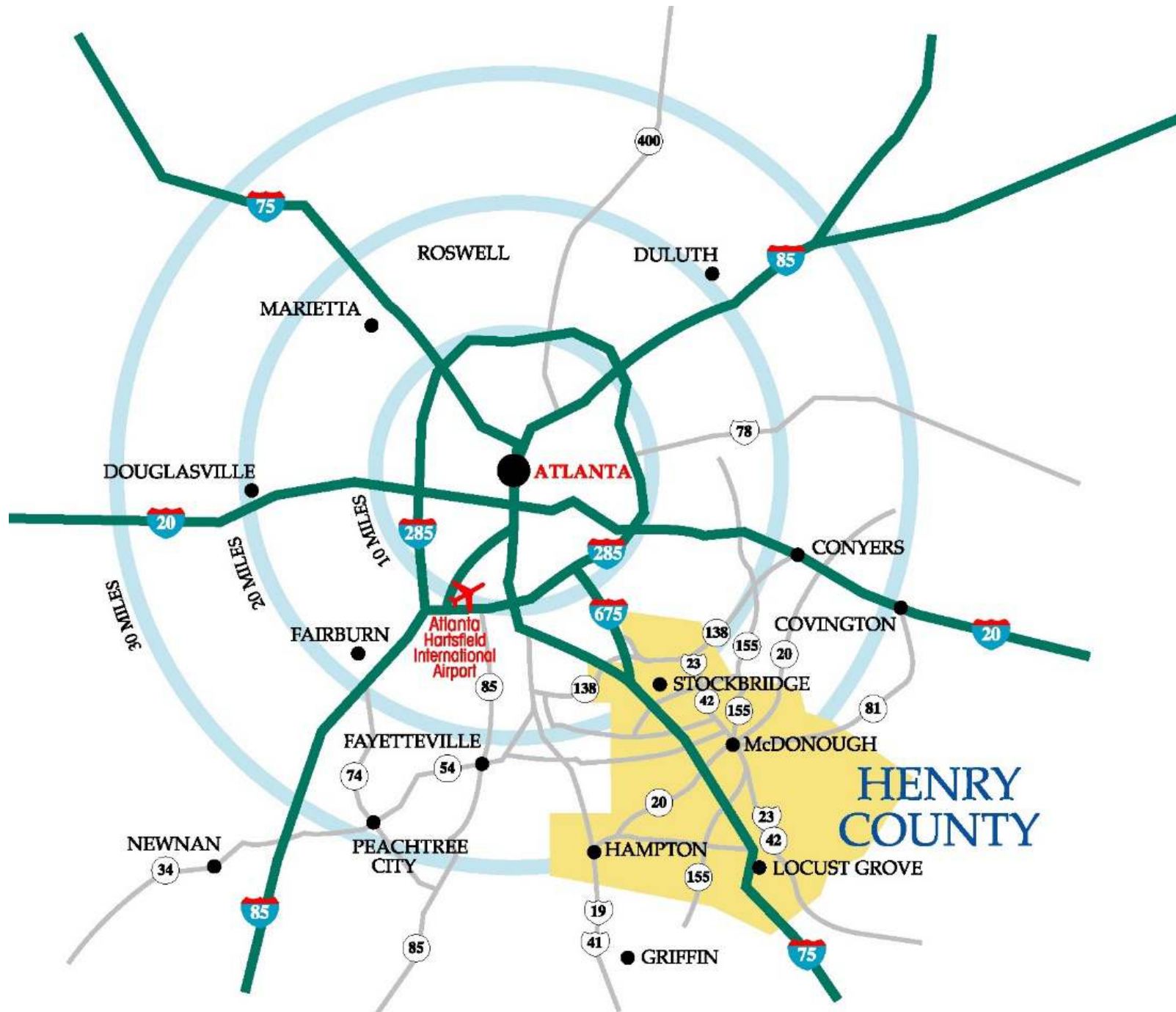
*2021 Joint GPA/TAPA Fall Conference*

*October 6, 2021*





# Henry County, Georgia



## Population

2020: 241,000

2050: 369,000



# Henry County Current Transportation Planning Projects

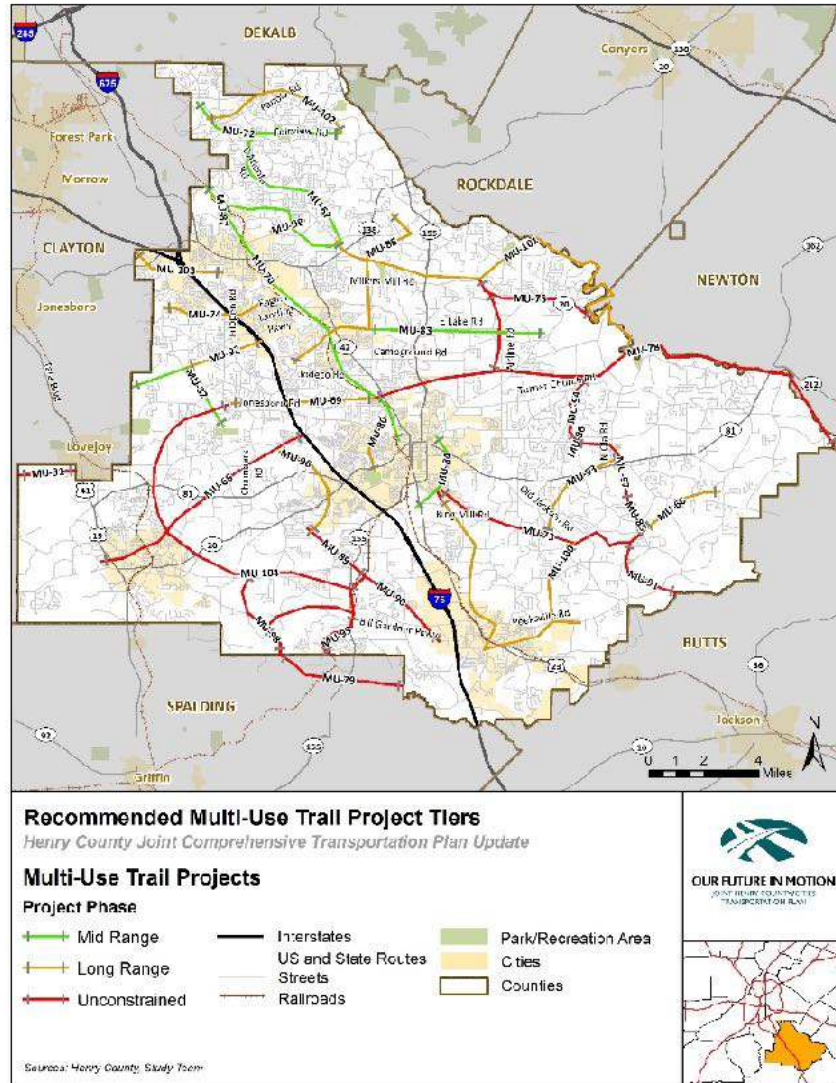
Three major transportation planning initiatives in 2021-2022:

1. Update the Henry County Comprehensive Transportation Plan
2. Develop a Henry County Transit Master Plan
- ➔ 3. Develop a Henry County Trails Plan





# Background



- Last Comprehensive Transportation Plan (CTP) developed in 2016
- The 2016 CTP provided a trail concept map
- The 2016 CTP recommended development of a trails plan and looking deeper into the trail concepts
- Henry County Department of Transportation Planning created in December 2019
- Transportation Planning Director hired
- Development of a trails plan placed in forefront in 2020
- Development of a trails plan undertaken in 2021
- Trails plan to be completed in June 2022



# Henry County Trails Plan Objectives

- Develop a network of interconnecting trails.
- Come up with a name for the county's trails network.
- Create a logo.

Examples that inspired us:



Gwinnett County

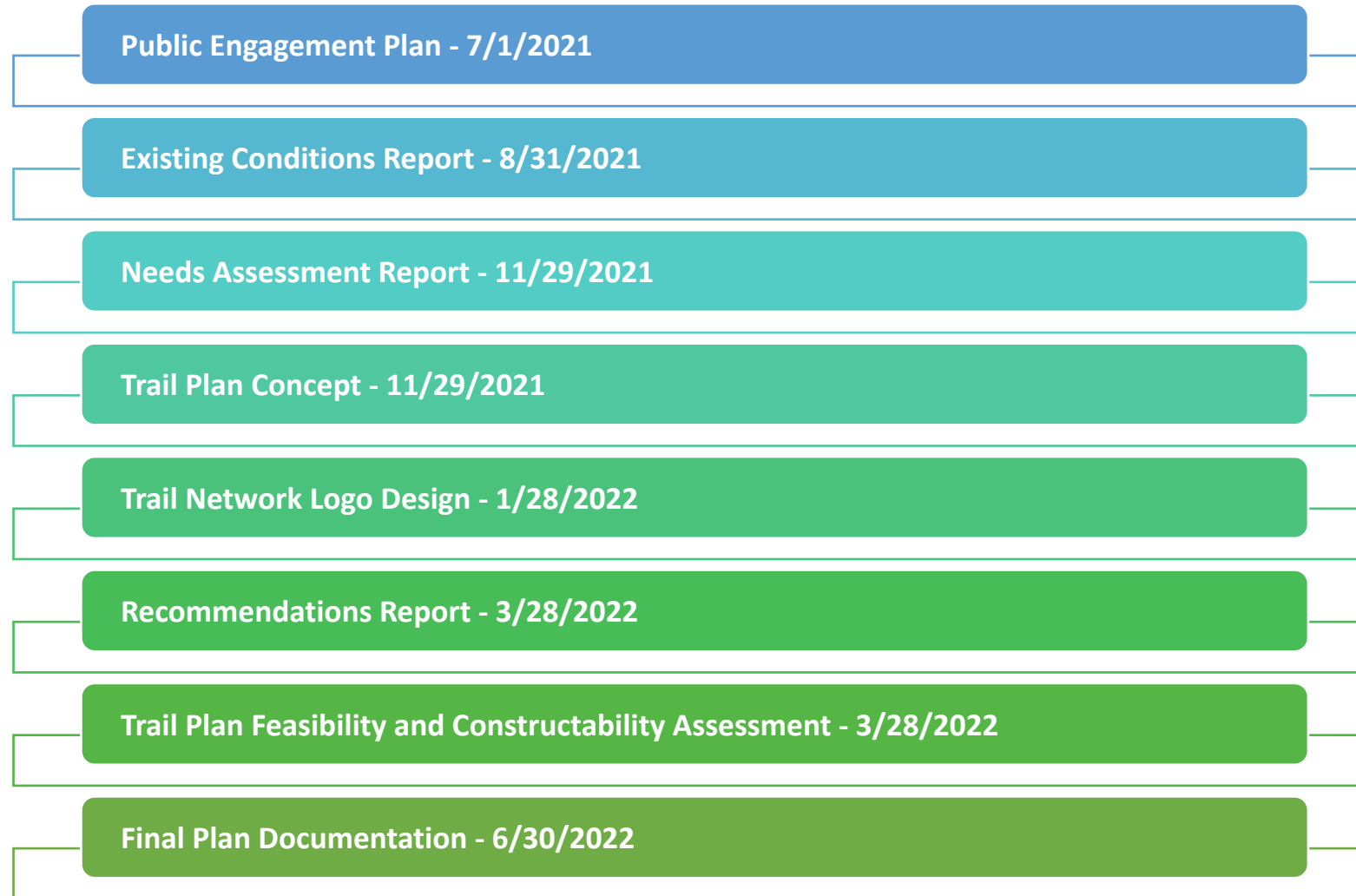


Hall County





# Henry County Trails Plan Development Timeline





Welcome to this home page for the ongoing Henry County Trail Plan. Please continue for information about the plan and how you can get involved and provide feedback to the planning team.

Henry County is also working on a Transportation Plan that is being prepared along with this plan. Please also visit their website here.

### Register for our Next Public Meeting

Please use the link below to sign up for our virtual meeting, Tuesday October 5 from 6pm to 8pm via Zoom.

[Register for the October Public Meeting Here!](#)

### Plan Overview

The Henry County Trails Plan was a recommendation from the previous (2016) Transportation Plan. The intent of this planning process will be to establish an overall framework for a countywide trail network. Certain high priority projects will be identified for a more detailed analysis. These "Model Miles" will establish a preferred alignment, assess environmental hurdles and risks, create a typical section. Once complete they will be ready for grant funding with an eye toward rapid implementation. In addition, the plan will create a recognizable branding for the trail network that will be used for signage along the trails as on the internet.

### Get Involved!

Take a look at our current engagement opportunities. Check here again later in the process for additional ways to make your voice heard.



### Tell Us What You'd Like to See!

Use our interactive map to tell us where you'd like to see trails in the future.

[See Project Map](#)



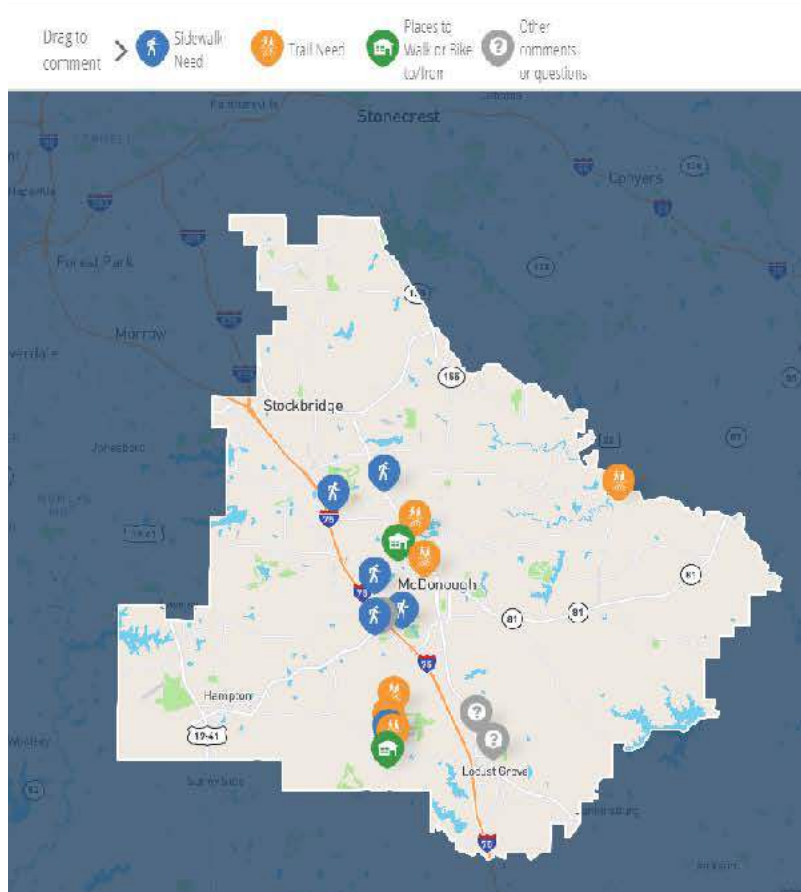
### Join Our Email List

Use this link to sign up for email updates throughout the life of the plan. These will include major planning milestones, notices for upcoming meetings, and reminders about online engagement opportunities.

[Get Involved](#)

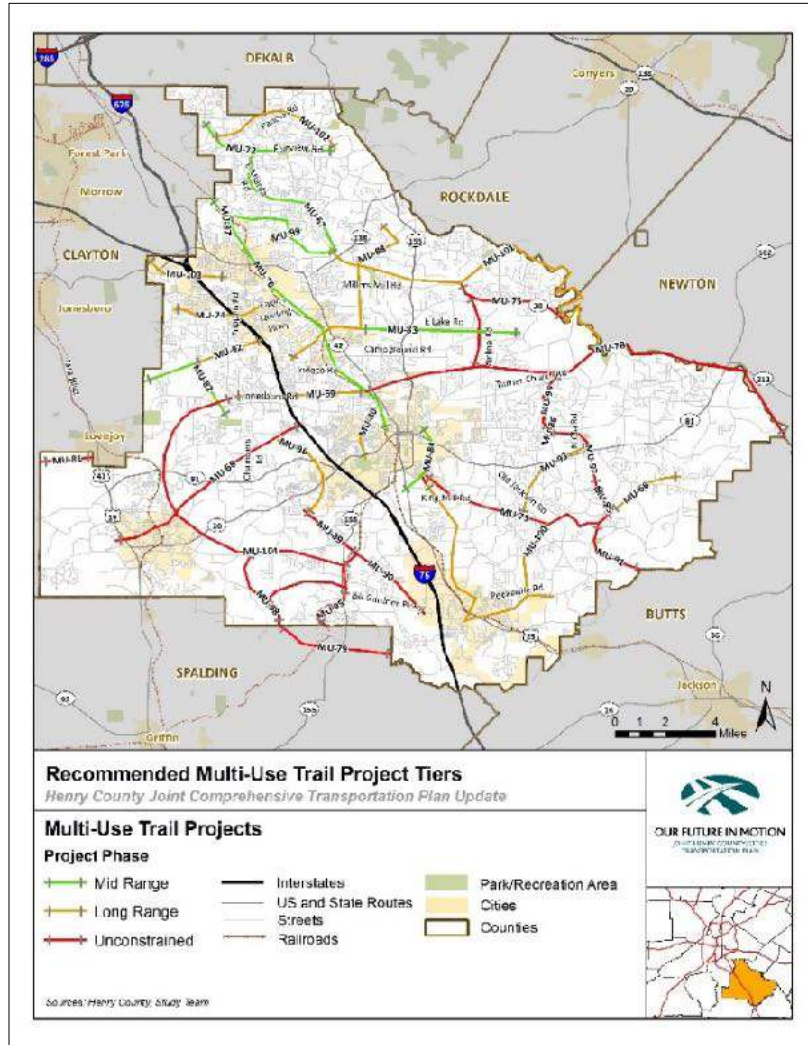
# Henry County Trails Plan Website

<https://planningatpond.com/Henry-Trails-Plan>

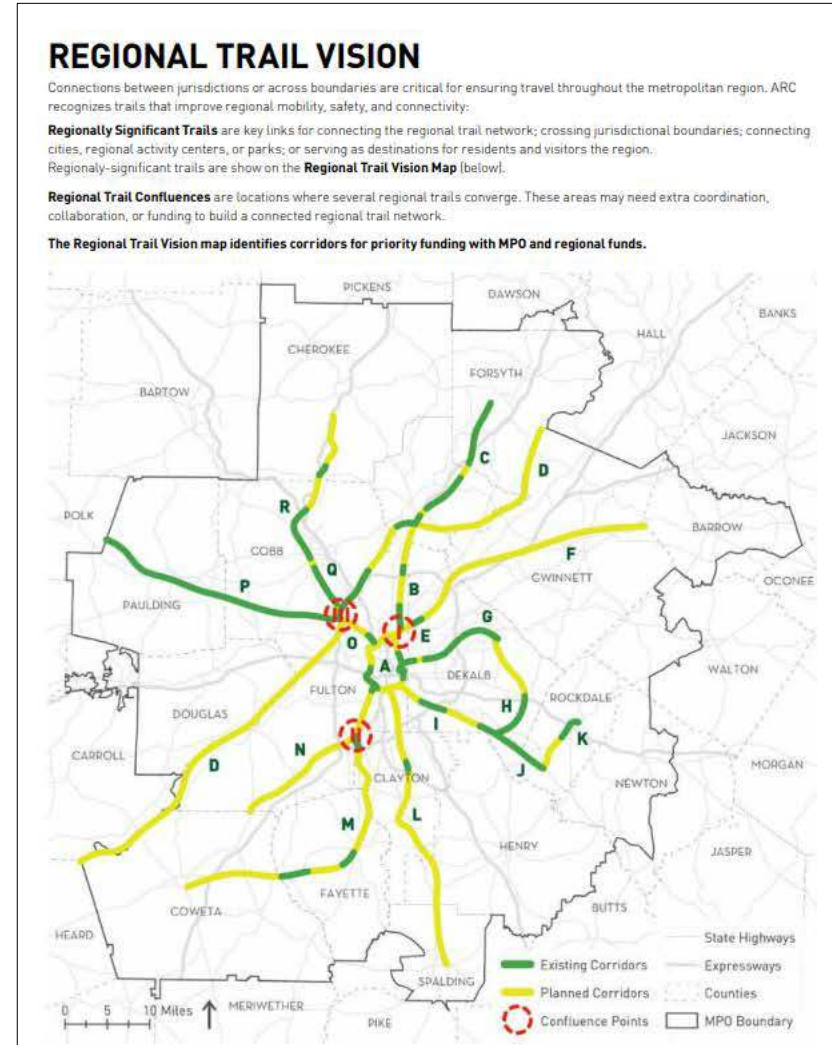




# County Trail Vision vs. Regional Trail Vision



Henry County 2016 Trail Vision



ARC 2020 Regional Trail Vision





# Panola Mountain Greenway

- 1.6 mile trail completed in January 2021
- Plan to extend trail another 0.9 mile in second phase







# Transportation Advisory Group

- Citizen group formed in August 2020
- 10 group members
  - 5 members from Henry County's five commission districts
  - 1 member appointed by Henry County Commission Chair
  - 4 members from Stockbridge, McDonough, Hampton, & Locust Grove
- Provide citizen input in transportation planning and projects
- Meets quarterly
- Playing a key role in the planning projects & T-SPLOST





# Additional Citizen Engagement

- Engaged Southern Crescent Cycling, a McDonough-based bicycling group
- Engaged Atlanta Trek, a McDonough-based bike shop/club with 139 members
- Community Engagement Plan includes:
  - Community survey
  - Pop-up events
  - Intercept interviews
  - Focus groups
  - Educational videos



# Past Trail Implementation Challenges

- Neighborhood opposition to connecting public trails with private trails
- Fear of increased crime
- Concern about potential loss of privacy





# In Conclusion...

To keep up with trails planning in Henry County:

- Visit the Henry County website at: <https://www.co.henry.ga.us/>.
- At the top-right corner on the home page, click “Departments”.
- From the drop-down menu, select “Transportation Planning”.
- Click “Trails Planning” tab.

TRANSPORTATION PLANNING

Departments > S - Z > Transportation Planning

Courts

Public Safety/Emergency Services

A - C

D - L

M - R

**Transportation Planning Department**

Home    Transportation Projects    Transit Planning    **Trails Planning**    Committees

**Address:** 140 Henry Parkway, McDonough, GA 30253  
**Tel:** 770-288-7669 **Fax:** 770-288-7440  
**Director:** Sam Baker, AICP  
**Email:** Email





# Connecting East Point Through Trails

2021 Joint GPA/TAPA Fall Conference  
October 6, 2021

Presented By  
Shellord Pinkett, III



# INTRODUCTION

In 2016 The City of East Point partnered with the PATH Foundation to develop a Trails Master Plan with implementation.



# TRAILS MASTER PLAN



- The plan was developed to focus on connections from schools, neighborhoods, parks, and employment centers to the heart of the city so all citizens of East Point can access a vibrant, successful city center.



# MODEL MILE



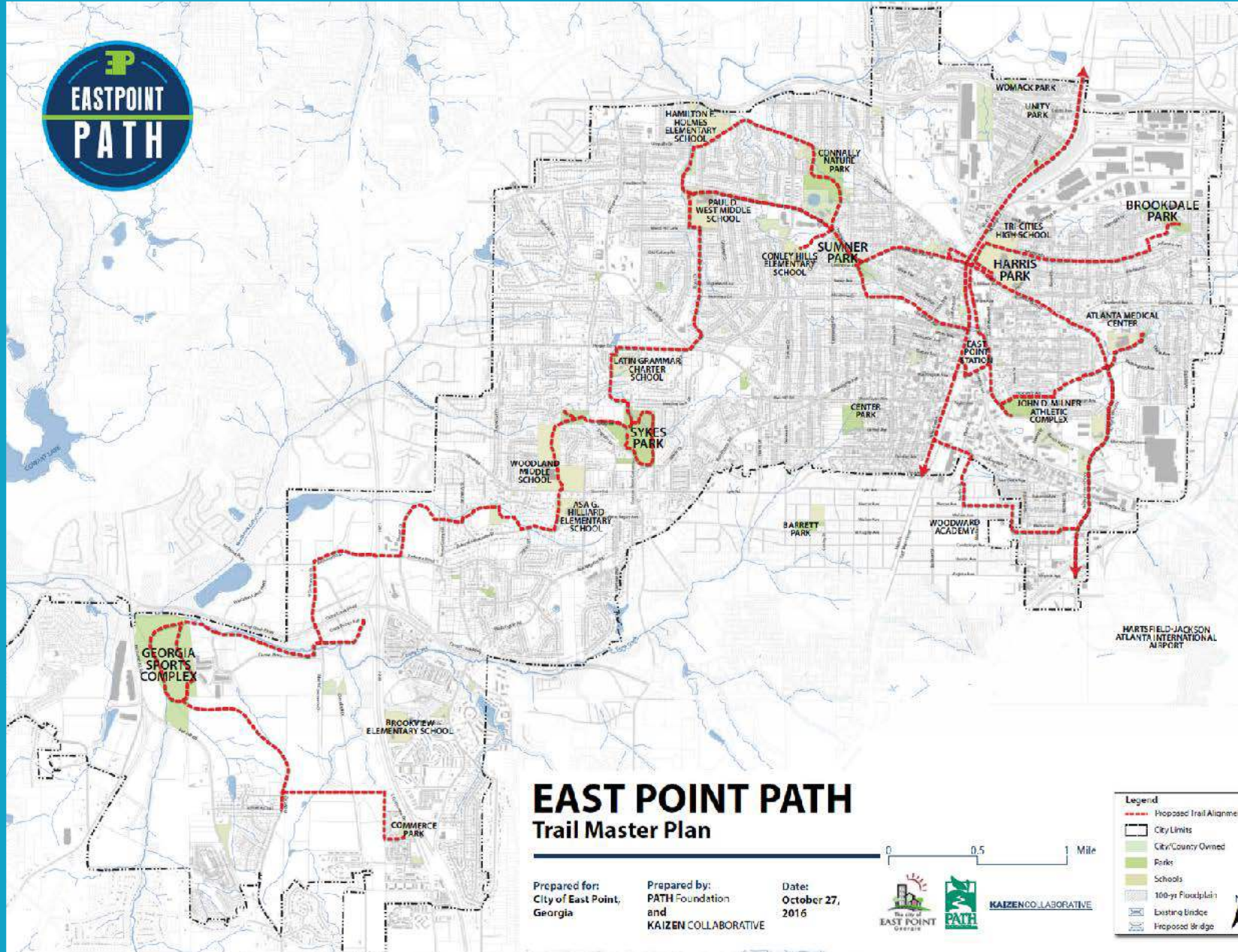
- A steering committee was created and this committee selected the best section of the trail plan as the initial model mile project.
- This segment connects two (2) parks and a high school. The construction of this model mile was paid for through TSPLOST funds.

# OTHER TRAILS AND CONNECTIONS



- A total of 16 major path segments were identified within the master plan.
- This plan was used in developing the AeroATL Greenway Plan with its model mile for East Point being part of the 16 path segments in the EP Trails Master Plan.
- Through grant funding, the Connally Nature Park trail has been developed to connect to the model mile project.
- Walking and mountain bike trails have been developed in Sykes Park.





# EP Path Model Mile



Model Mile Rendering

2017



Model Mile Rendering

2017



Model Mile Completion

2020



# EP Path Coming Soon





# EP Path Coming Soon





# Challenges



- Funding
- Construction delays and modifications
- Politics

# Partnerships



- PATH Foundation
- Aerotropolis Atlanta CID
- LWCF
- MTB Atlanta
- Kaizen Collaborative
- POND



# COMMUNITY ENGAGEMENT

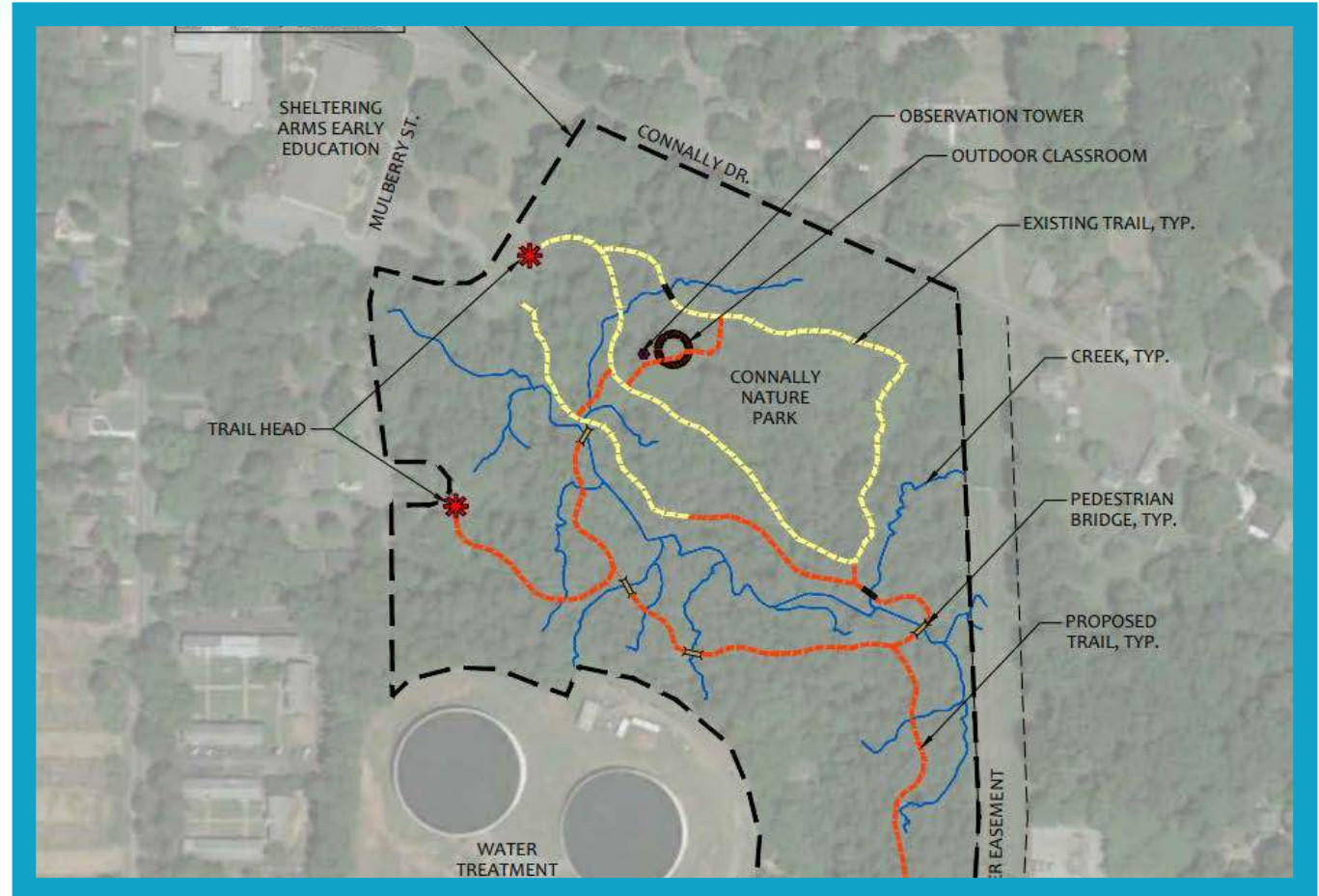


- Overall Positive
- Safety Concerns
- Maintenance Concerns

# Current Projects

## Connally Nature Trail

This natural trail leaves the park and connects to the EP Path Model Mile. This project is being funded by LWCF.





# Current Projects

## AeroATL Greenway Trail

East Point Model Mile of the AeroATL Greenway Trail.



**PLACEMAKING & WAYFINDING  
ELEMENTS**



**TRAILS AS CATALYSTS FOR  
REDEVELOPMENT (THE BELTLINE  
EAST SIDE TRAIL)**

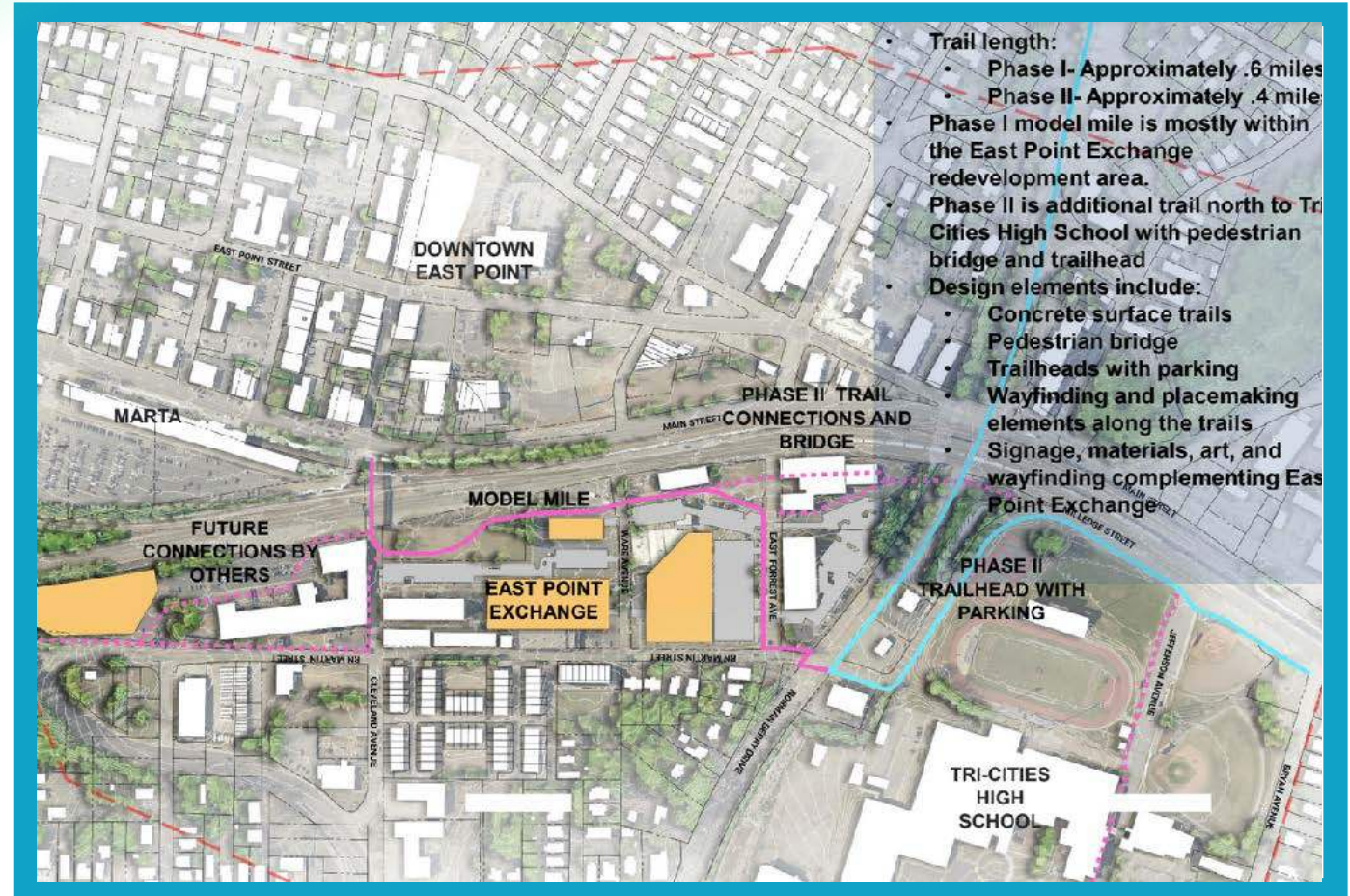


**GREENSPACE FOR PROGRAMMED OR  
NON-PROGRAMMED EVENTS (KLYDE  
WARREN PARK, TX)**

# Current Projects

## AeroATL Greenway Trail

East Point Model Mile of the AeroATL Greenway Trail.







# In Conclusion

The City of East Point is in a great position to truly become a walkable, bike-friendly, and accessible community to its residents and visitors. We believe it is achievable through great partnerships and creative funding.



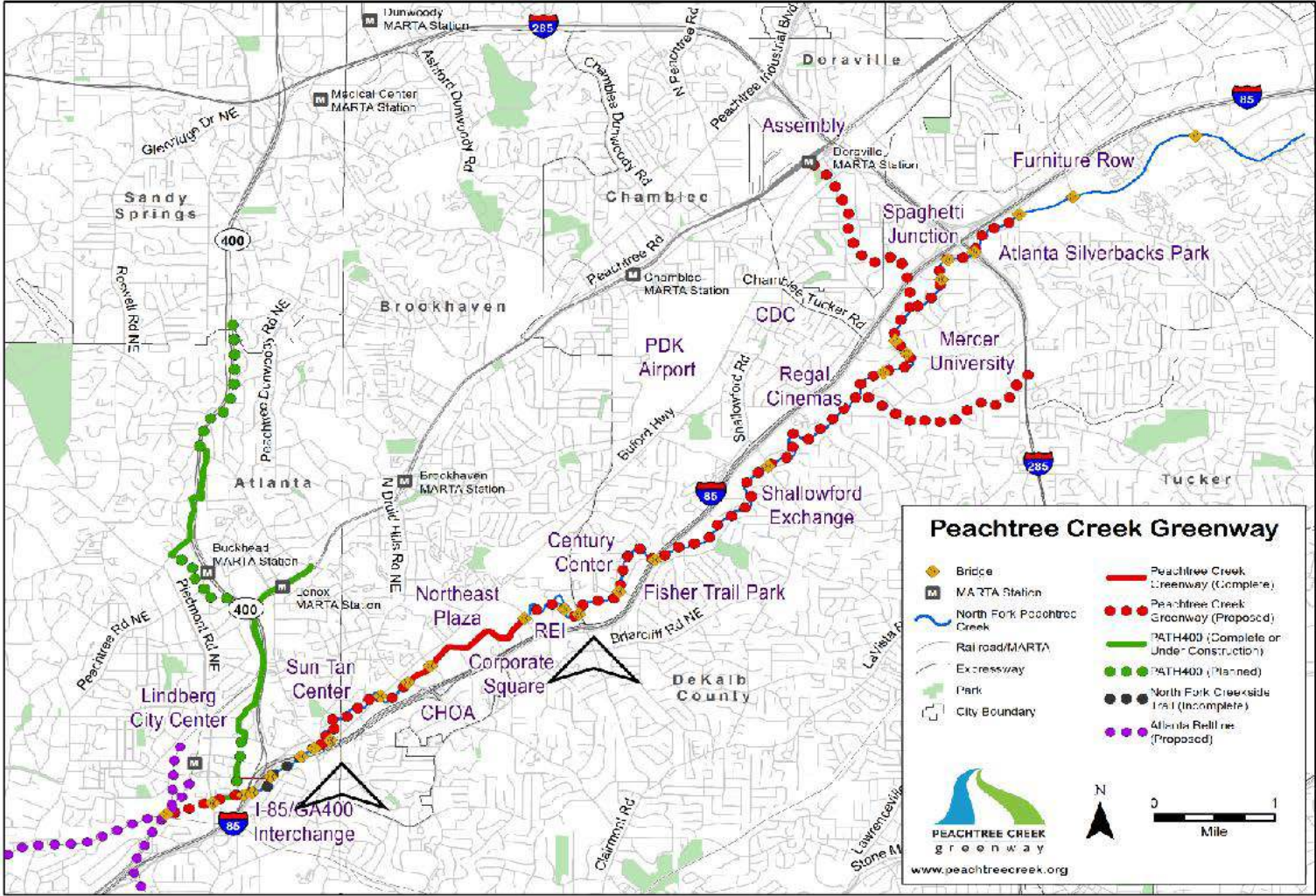


# Peachtree Creek Greenway





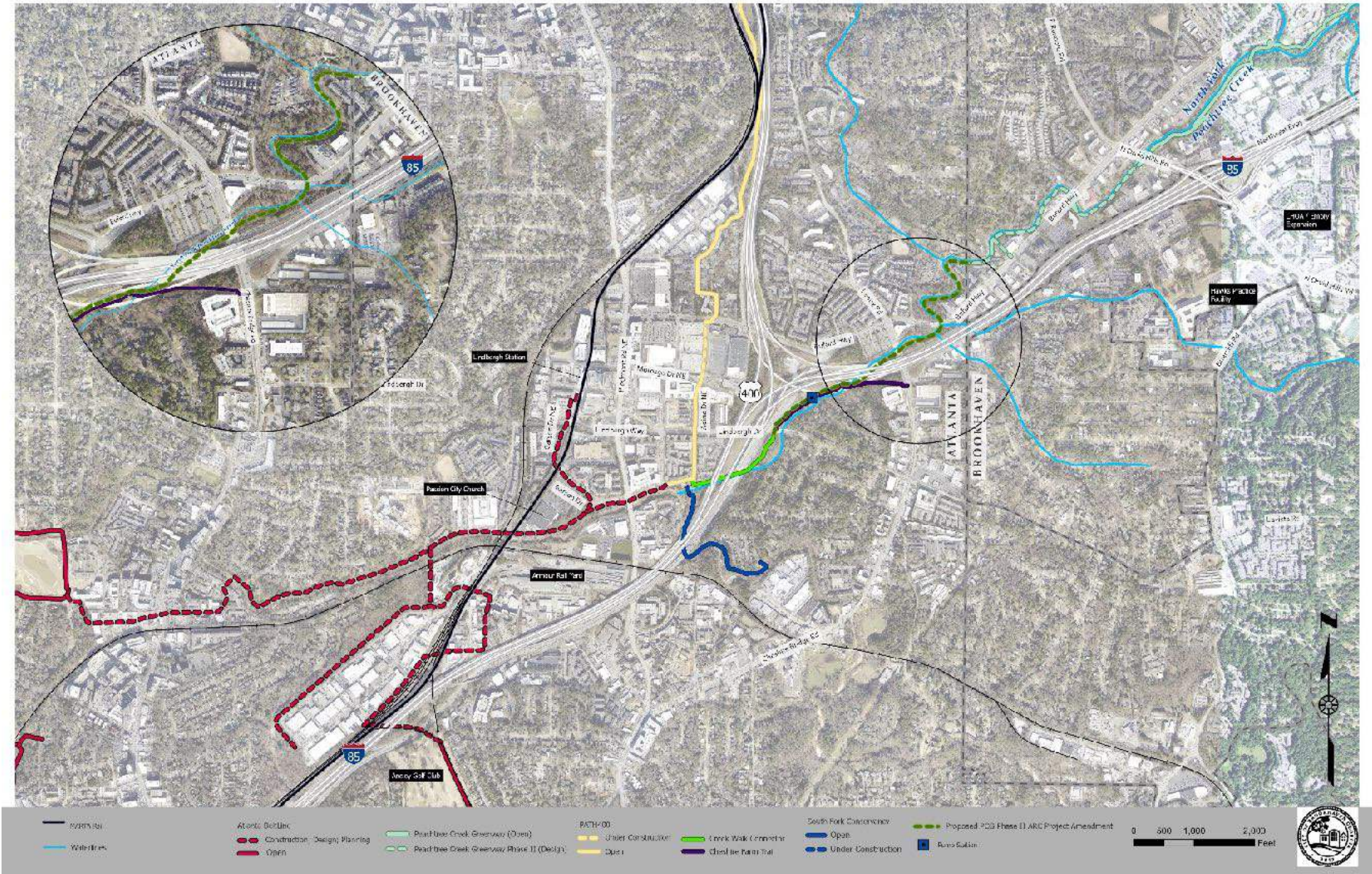
# A Regional Perspective





# Linking the trails

Atlanta Beltline  
 PATH 400  
 South Fork Conservancy  
 Peachtree Creek Greenway





## What is the Peachtree Creek Greenway?

The PCG is a 13.5 mile multi-use trail running along the north fork of Peachtree Creek beginning at the confluence of the north and south forks in Atlanta, running through 4 cities, and ultimately connecting 3 of the 4 most populated counties in Georgia.

### **A transportation project?**

Provides last-mile connectivity to the Buford Hwy bus route, the most heavily used in the MARTA system, and short trip connections to densely populated low, mid, higher income areas to retail, centers of employment, recreation and healthcare centers.

### **A linear park?**

Allows an opportunity to provide a community gathering space, outdoor recreation, environmental education, revitalization a neglected waterway.

### **An economic development engine?**

2020 ABL documents a 10:1 positive return on investment; 2013 Silver Comet Trail study showed 4:1 return; University of Massachusetts Economy Research Study shows average 11.4 permanent jobs for every \$1 million spent.



## Financing

### Phase I Cost: \$21 million

- Hotel/Motel Tax
- Land Donation
- Community Partnership Agreements
- SPLOST
- HOST

### Phase II & Phase III

### Planning estimate: \$42 million

- Hotel/Motel Tax
- Federal Funding
  - FHWA
  - EPA
  - LWCF





## Major Project Risks

- Hotel/Motel market stressors
- Federal funding priority shift from multi-use trail
- Congressional “haggling” over infrastructure
- Increased competition for limited financial resources





## Community Concerns

### Privacy

- Greenway does not pass through neighborhoods

### Conservation

- Brookhaven and Chamblee funded a joint Watershed Improvement Plan to study stressors and identify improvements
- Greenway project removes invasive species, restores shoreline

### Community Safety

- Lighting along entire trail
- Public Safety Center built at Trail Head



# Community Involvement

## Stakeholder Committee

### Meetings included

- PATH Foundation Team
- City project staff
- GDOT
- Police Department
- Georgia Power
- County Staff
- Communications





# Phase I opened December 2019

## The model mile

- PATH Foundation design established PCG Standards
- 14-foot path
- 700- foot bridge
- 3 trailheads
- 12 months from groundbreaking to opening



# Opportunities

- Realignment of North Druid Hills intersection
- Overarching health benefits—far exceeded
- Renewed attention to the health of the waterway—far exceeded
- “Bridging the divide” –Brookhaven is divided by I-85
- Community meeting place





# PCG Partners



DOING THE MOST GOOD



Children's  
Healthcare of Atlanta



Heath & Lineback Engineers, Inc.

**KAIZEN**COLLABORATIVE  
Landscape Architecture | Planning | Civil Engineering



Georgia  
Power



Latin American  
Association

**CBRE**



# QUESTIONS?

## Contact:

Byron Rushing, ARC

[brushing@atlantaregional.org](mailto:brushing@atlantaregional.org)

Elizabeth Sandlin, ARC

[esandlin@atlantaregional.org](mailto:esandlin@atlantaregional.org)

Sam Baker, Henry County

[sbaker@co.henry.ga.us](mailto:sbaker@co.henry.ga.us)

Shellord Pinkett, City of East Point

[spinkett@EastPointCity.org](mailto:spinkett@EastPointCity.org)

Patty Hansen, City of Brookhaven

[patty.hansen@BrookhavenGA.gov](mailto:patty.hansen@BrookhavenGA.gov)