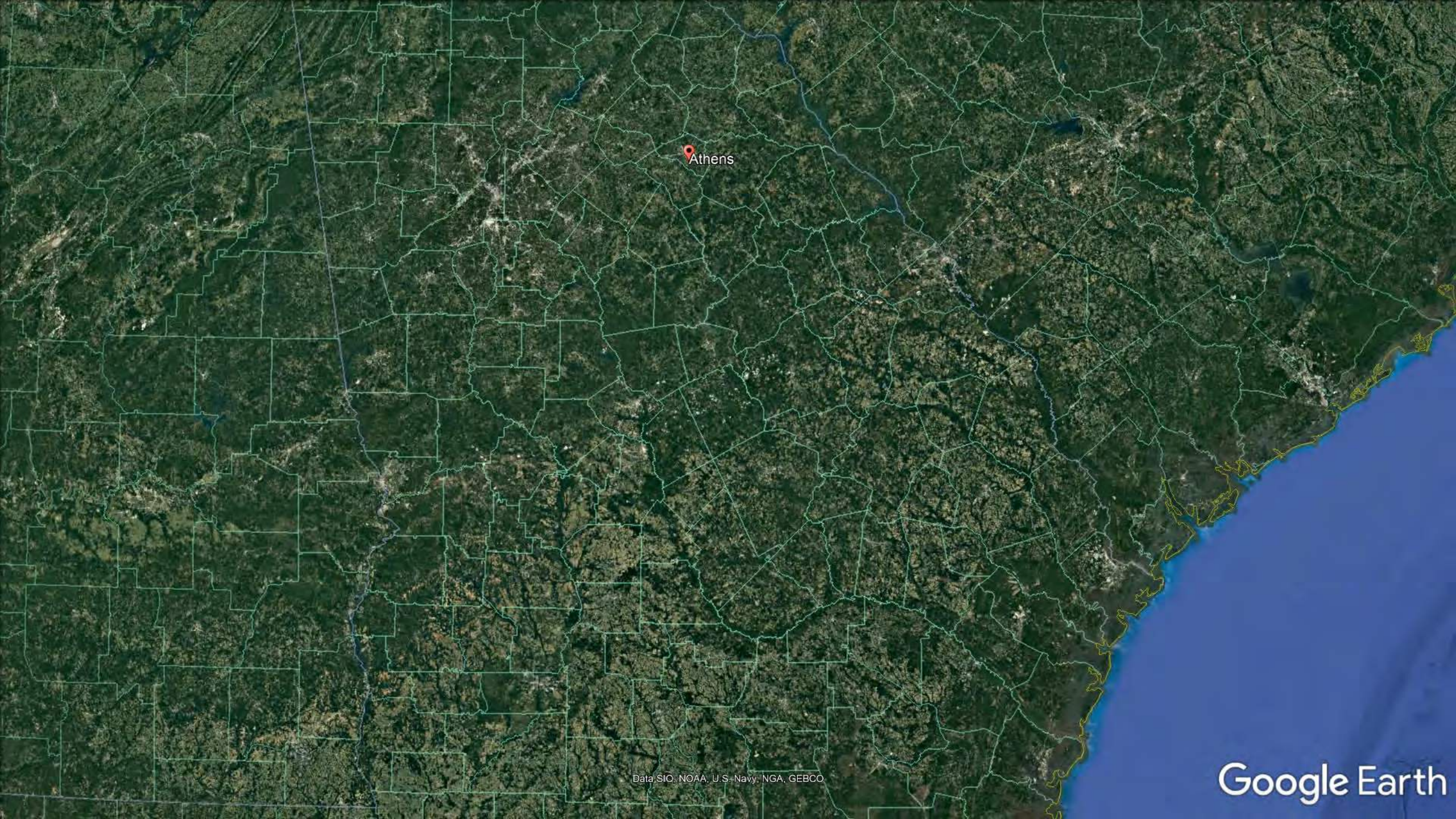


Medellín, Colombia as an Emerging City



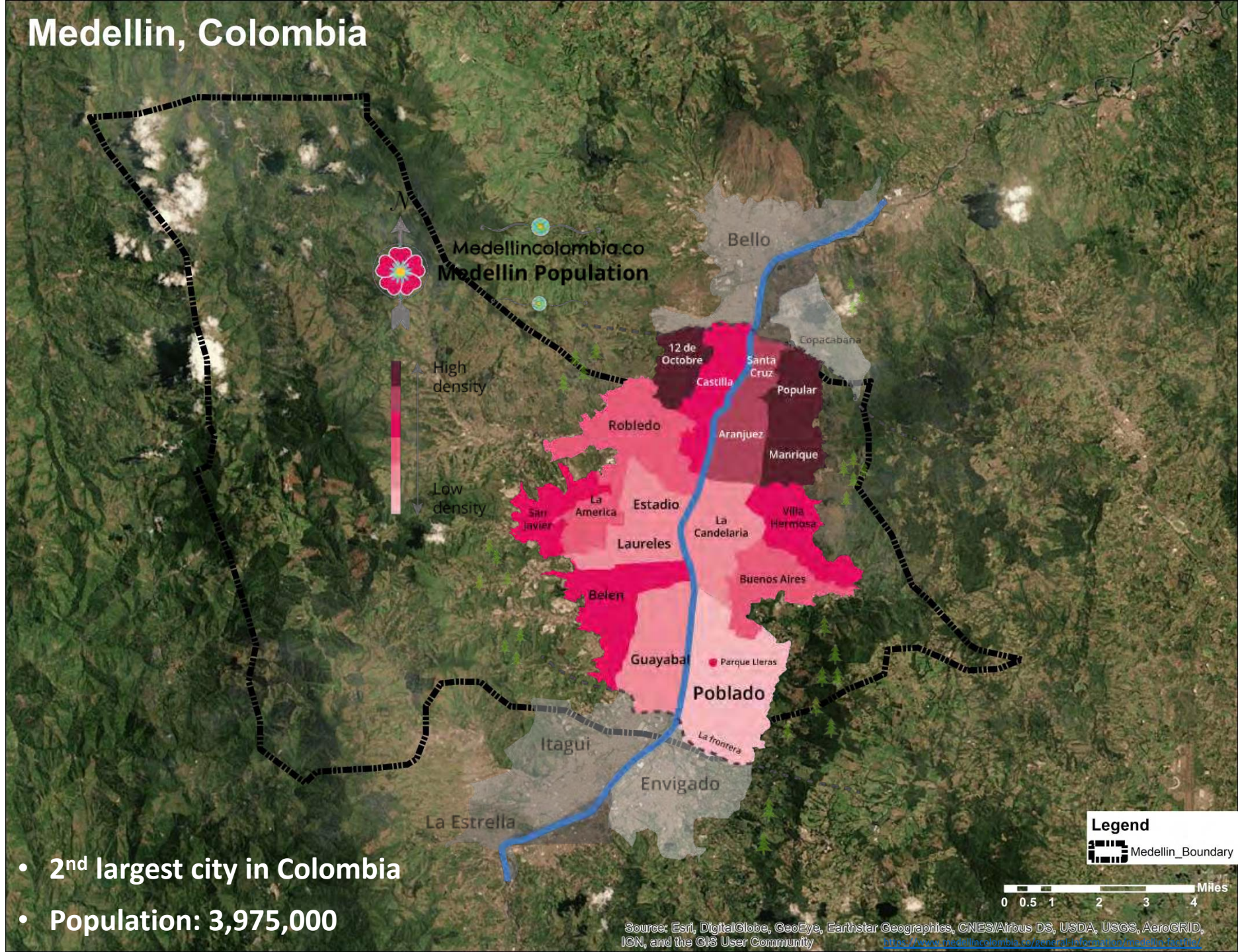
Athens

Data SIO, NOAA, U.S. Navy, NGA, GEBCO

Google Earth



Medellin, Colombia



- 2nd largest city in Colombia
- Population: 3,975,000

Transformation from “the most violent to the most innovative city in the world”



Urban Transformation in Medellín



Acreditación Institucional de Alta Calidad • Sede Central • Medellín
Res. No. 02444 del 22 de febrero de 2017 - 8 años • Vigilada Mineducación



Outline

- Historical overview
- Urban and social transformation
 - Integrated Transportation System
 - Library Parks
 - UVAs
 - City branding
 - Citizen Participation
- Lessons Learned



A Long and Complicated History

- 1980s and 1990s – the most violent years
 - Pablo Escobar era 1980s → 1993
- During the past 30 years of the city
 - Drug trafficking
 - Armed conflict and the Colombian cartel
 - Known as the homicide capital of the world
- “The Industrial City”
- Large population growth

The Urban Transformation

Late 1990s → present

- Integrated Transportation System
 - Metrocables
- Library Parks
 - Community building
- Unidades de Vida Articulada (UVAs) – Articulated Life Units
- City Branding and Citizen Participation

Integrated Transportation System



Medellín, Colombia



0 0.5 1 2 3 4 Miles

Samantha Eberhard | UGA MEPD
Data Sources: Alcaldía de Medellín

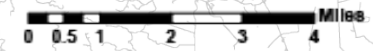
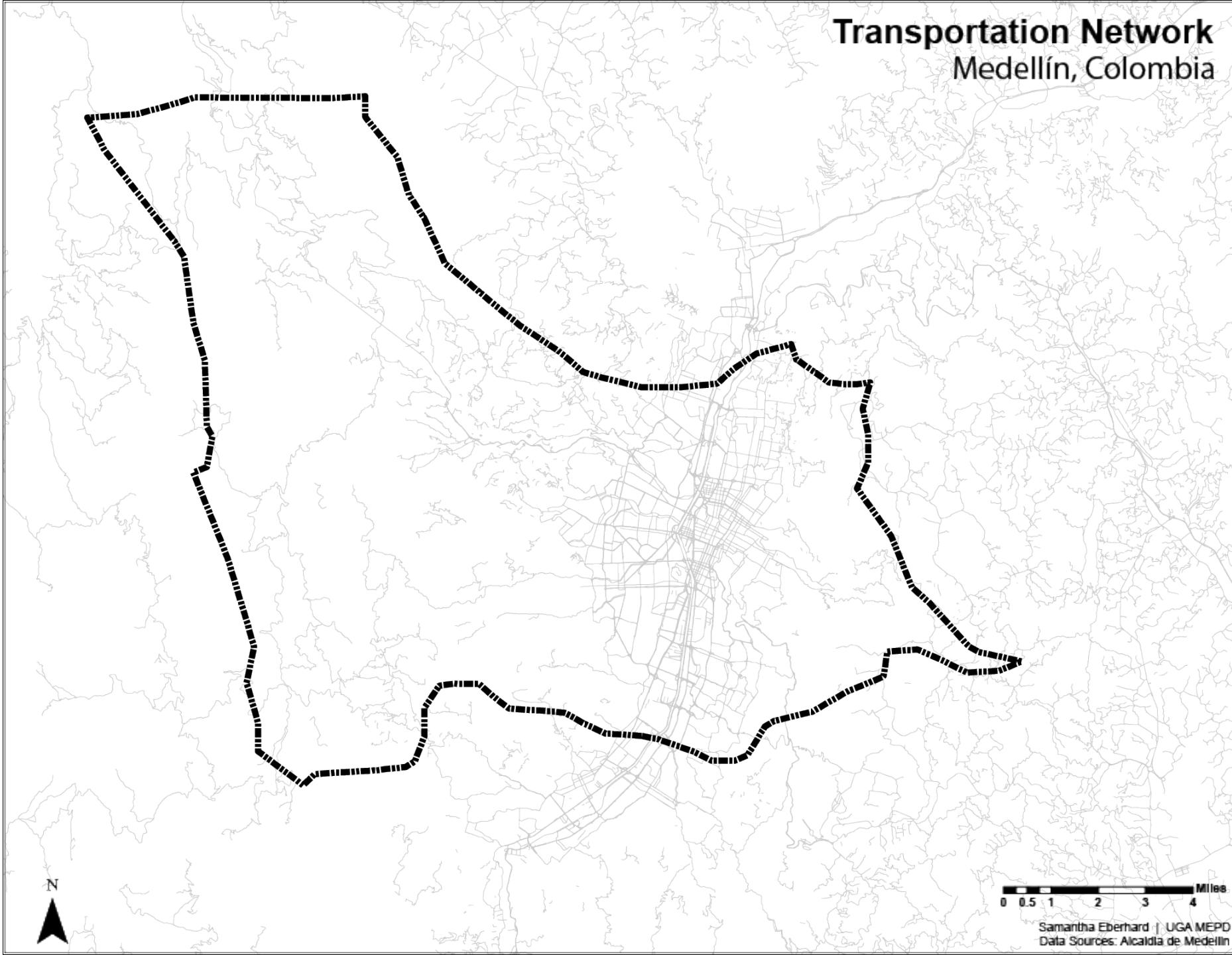
Medellín, Colombia



0 0.5 1 2 3 4 Miles

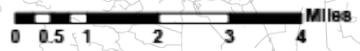
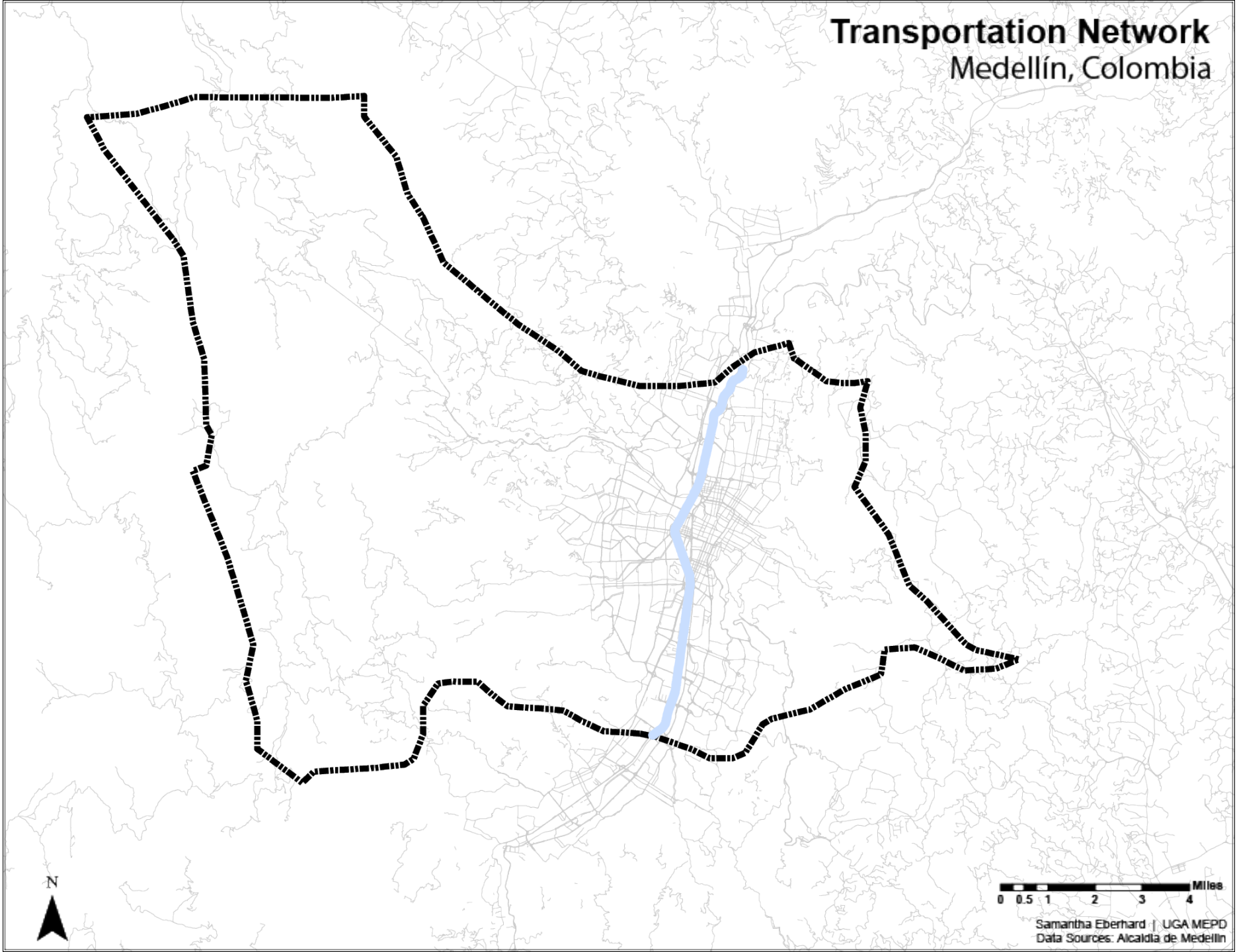
Samantha Eberhard | UGA MEPD
Data Sources: Alcaldía de Medellín

Transportation Network Medellín, Colombia



Samantha Eberhard | UGA MEPD
Data Sources: Alcaldia de Medellín

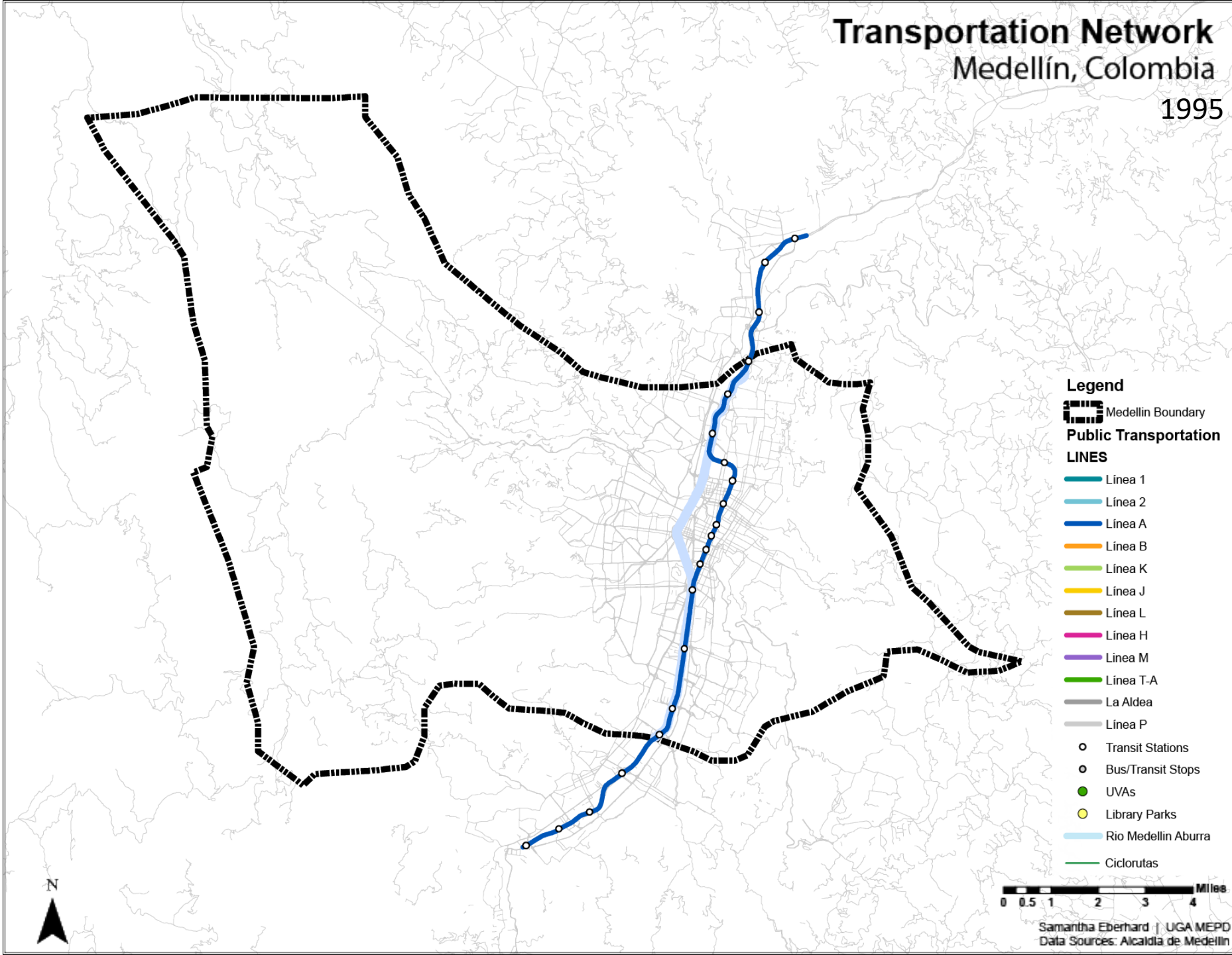
Transportation Network Medellín, Colombia



Samantha Eberhard | UGA MEPD
Data Sources: Alcaldia de Medellín

Transportation Network Medellín, Colombia

1995



Legend

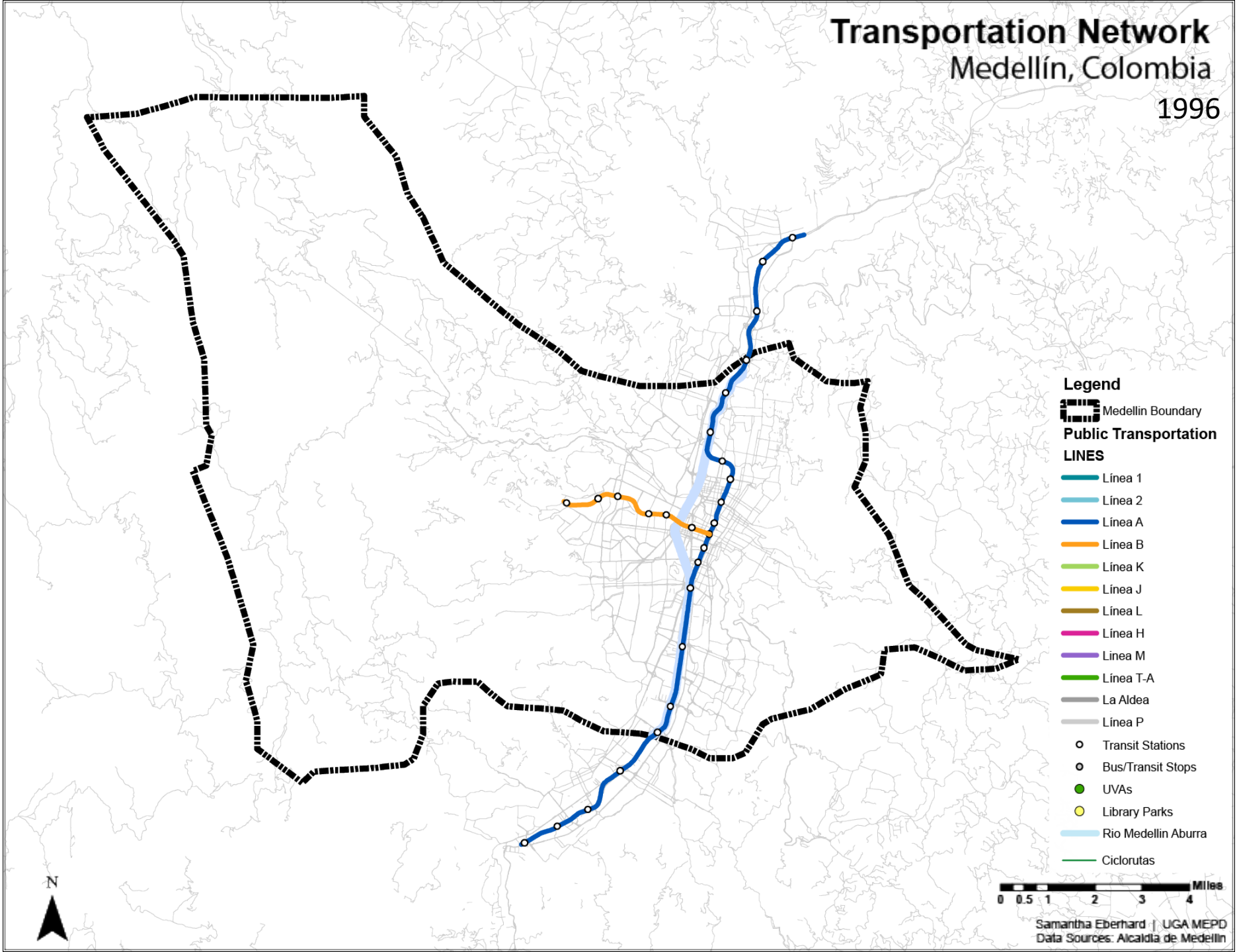
- Medellin Boundary
- Public Transportation LINES**
- Linea 1
- Linea 2
- Linea A
- Linea B
- Linea K
- Linea J
- Linea L
- Linea H
- Linea M
- Linea T-A
- La Aldea
- Linea P
- Transit Stations
- Bus/Transit Stops
- UVAs
- Library Parks
- Rio Medellin Aburra
- Ciclorutas

0 0.5 1 2 3 4 Miles

Samantha Eberhard | UGA MEPD
Data Sources: Alcaldia de Medellín

Transportation Network Medellín, Colombia

1996



Legend

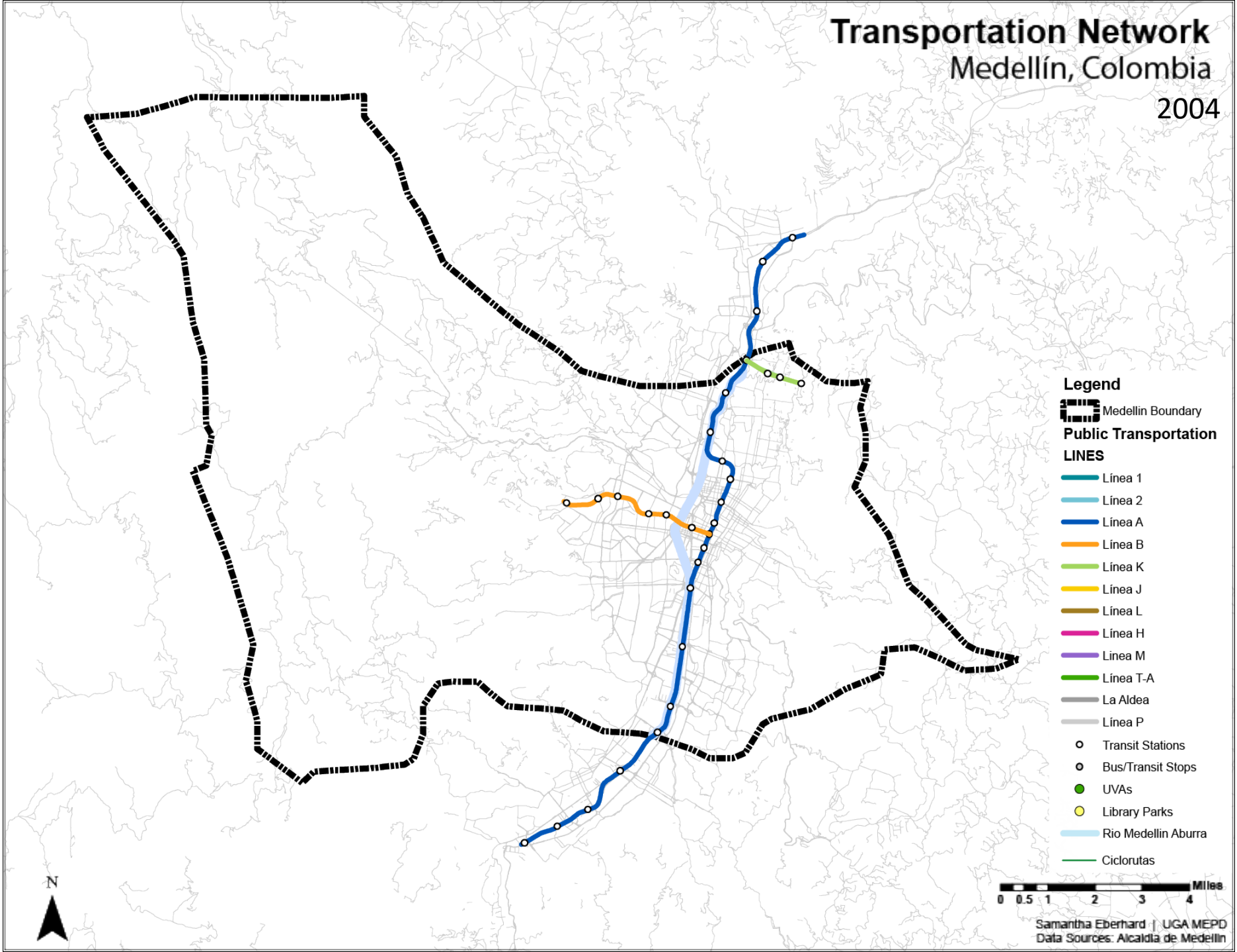
- Medellin Boundary
- Public Transportation LINES**
- Línea 1
- Línea 2
- Línea A
- Línea B
- Línea K
- Línea J
- Línea L
- Línea H
- Línea M
- Línea T-A
- La Aldea
- Línea P
- Transit Stations
- Bus/Transit Stops
- UVAs
- Library Parks
- Rio Medellín Aburra
- Ciclorutas

0 0.5 1 2 3 4 Miles

Samantha Eberhard | UGA MEPD
Data Sources: Alcaldía de Medellín

Transportation Network Medellín, Colombia

2004



Legend

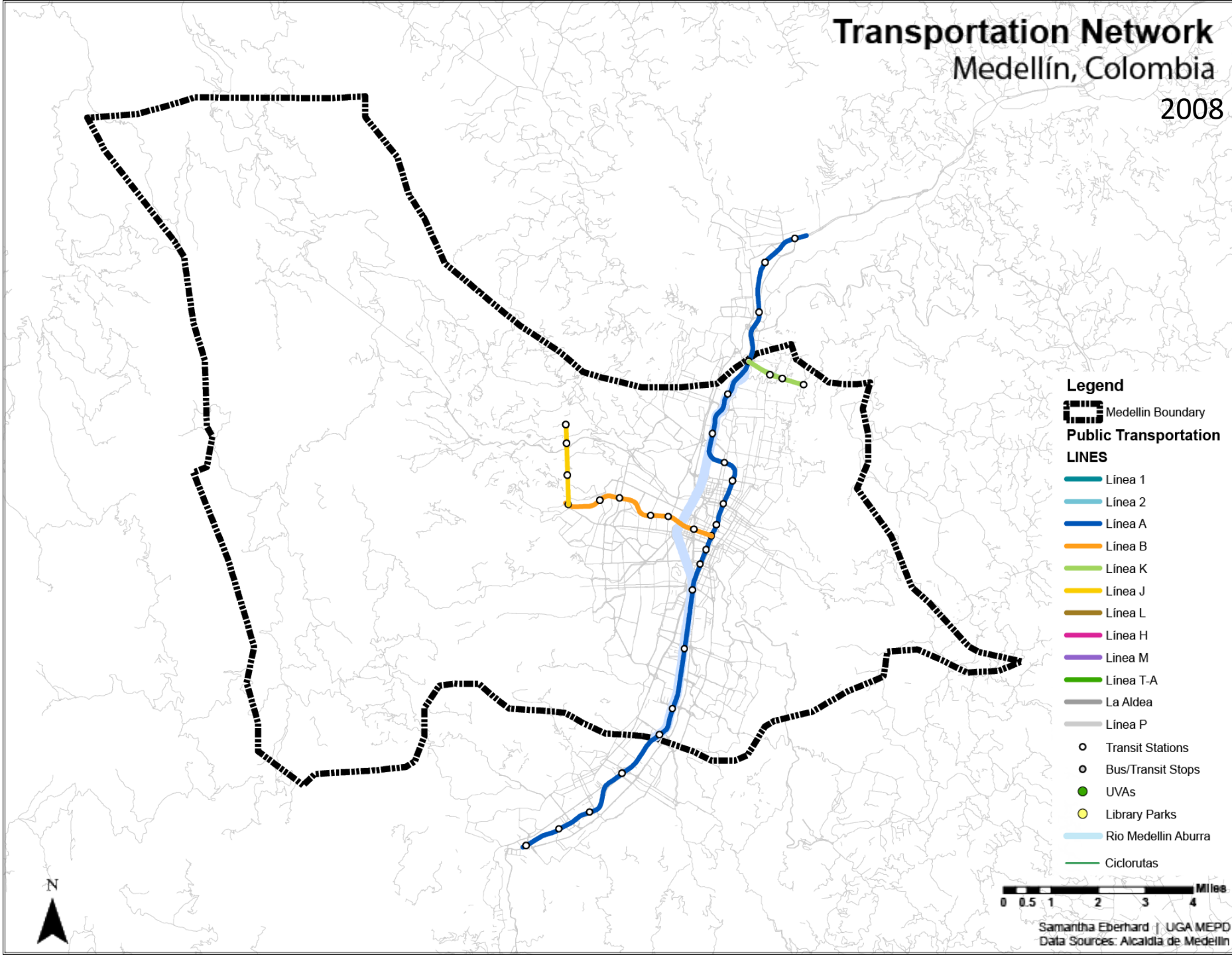
- Medellin Boundary
- Public Transportation LINES**
- Linea 1
- Linea 2
- Linea A
- Linea B
- Linea K
- Linea J
- Linea L
- Linea H
- Linea M
- Linea T-A
- La Aldea
- Linea P
- Transit Stations
- Bus/Transit Stops
- UVAs
- Library Parks
- Rio Medellín Aburra
- Ciclorutas

0 0.5 1 2 3 4 Miles

Samantha Eberhard | UGA MEPD
Data Sources: Alcaldia de Medellín

Transportation Network Medellín, Colombia

2008



Legend

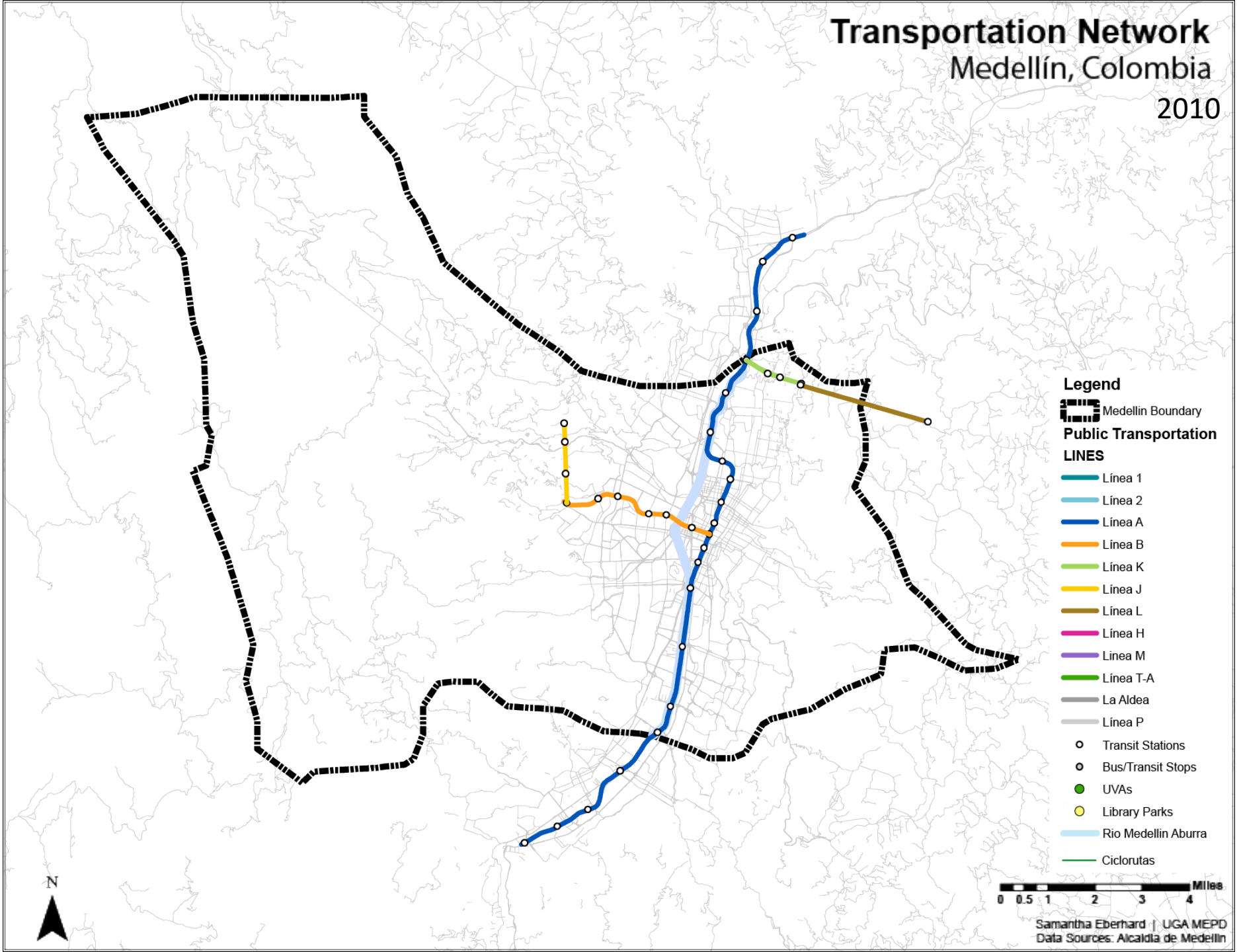
- Medellin Boundary
- Public Transportation LINES**
- Linea 1
- Linea 2
- Linea A
- Linea B
- Linea K
- Linea J
- Linea L
- Linea H
- Linea M
- Linea T-A
- La Aldea
- Linea P
- Transit Stations
- Bus/Transit Stops
- UVAs
- Library Parks
- Rio Medellin Aburra
- Ciclorutas

0 0.5 1 2 3 4 Miles

Samantha Eberhard | UGA MEPD
Data Sources: Alcaldia de Medellín

Transportation Network Medellín, Colombia

2010



Legend

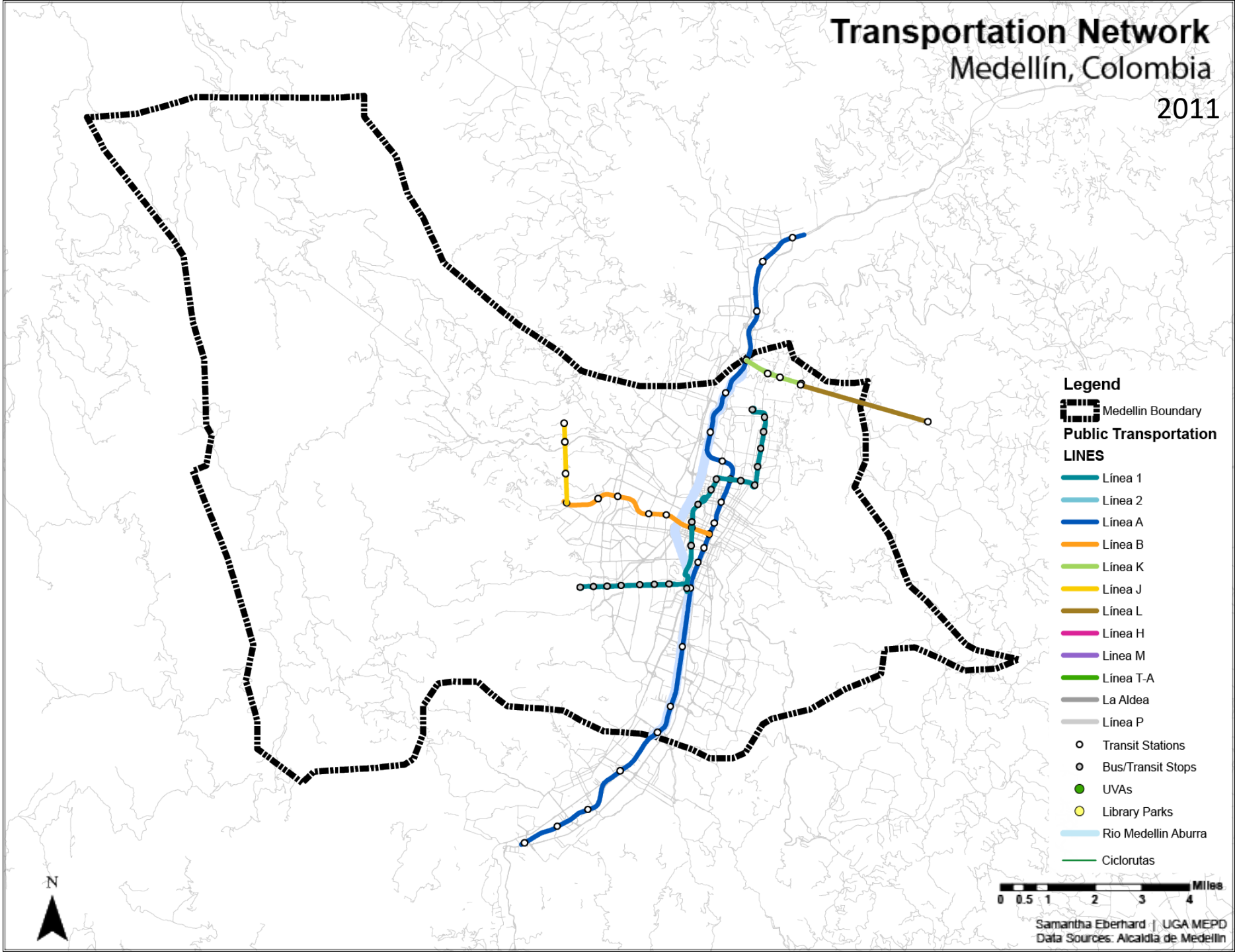
- Medellin Boundary
- Public Transportation LINES**
- Linea 1
- Linea 2
- Linea A
- Linea B
- Linea K
- Linea J
- Linea L
- Linea H
- Linea M
- Linea T-A
- La Aldea
- Linea P
- Transit Stations
- Bus/Transit Stops
- UVAs
- Library Parks
- Rio Medellín Aburra
- Ciclorutas

0 0.5 1 2 3 4 Miles

Samantha Eberhard | UGA MEPD
Data Sources: Alcaldia de Medellín

Transportation Network Medellín, Colombia

2011



Legend

Medellin Boundary

Public Transportation LINES

Linea 1

Linea 2

Linea A

Linea B

Linea K

Linea J

Linea L

Linea H

Linea M

Linea T-A

La Aldea

Linea P

Transit Stations

Bus/Transit Stops

UVAs

Library Parks

Rio Medellin Aburra

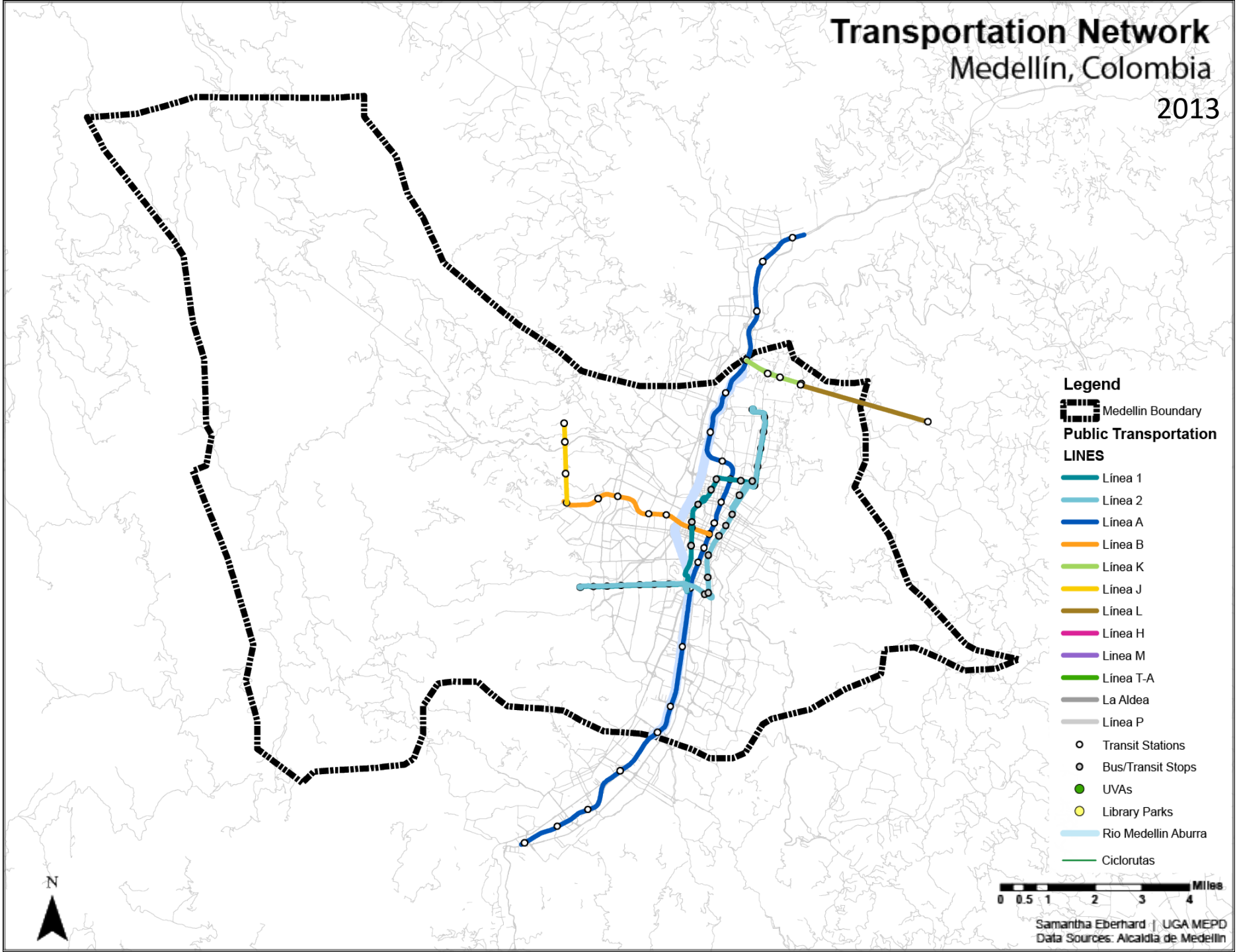
Ciclorutas

0 0.5 1 2 3 4 Miles

Samantha Eberhard | UGA MEPD
Data Sources: Alcaldia de Medellín

Transportation Network Medellín, Colombia

2013



Legend

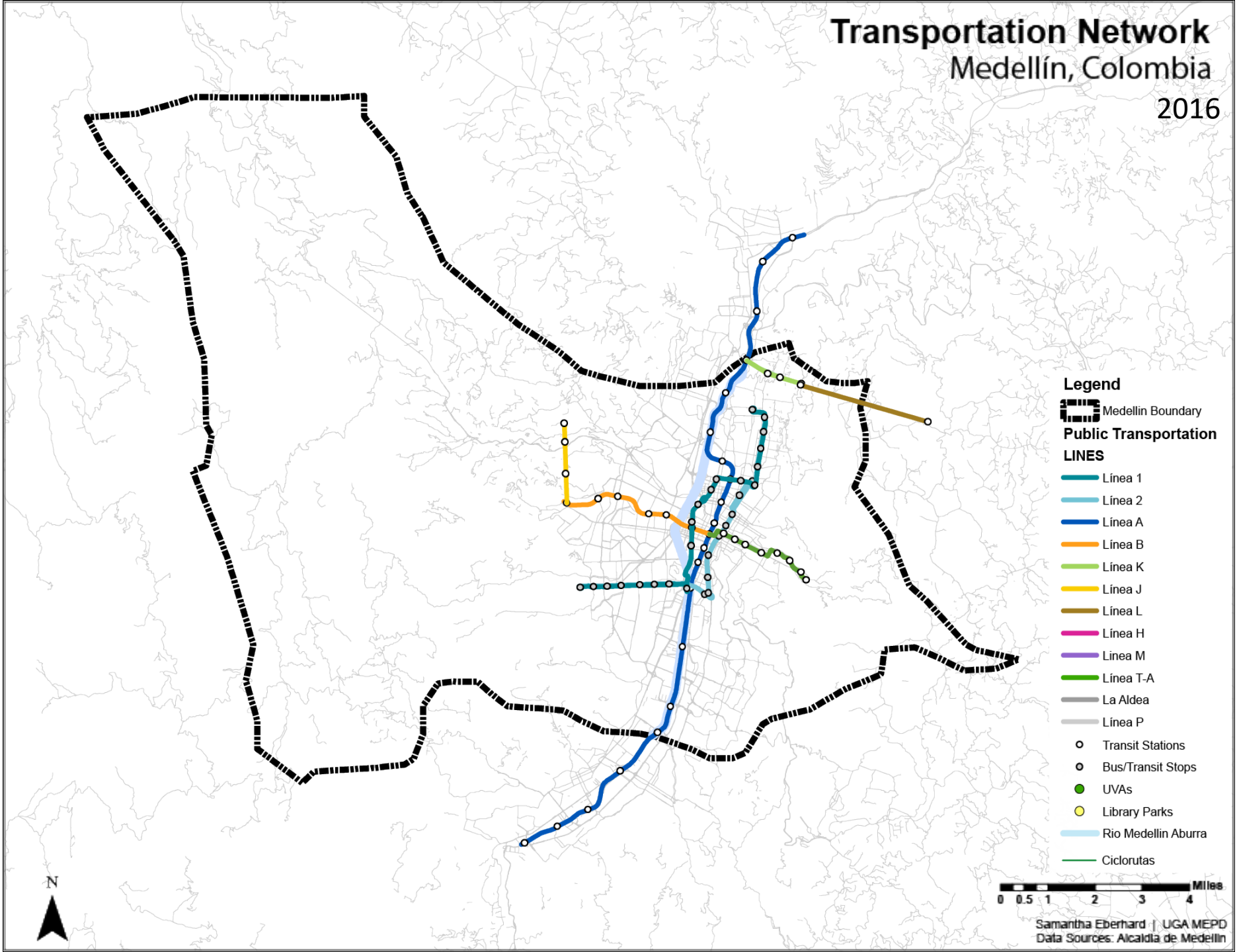
- Medellin Boundary
- Public Transportation LINES**
- Linea 1
- Linea 2
- Linea A
- Linea B
- Linea K
- Linea J
- Linea L
- Linea H
- Linea M
- Linea T-A
- La Aldea
- Linea P
- Transit Stations
- Bus/Transit Stops
- UVAs
- Library Parks
- Rio Medellin Aburra
- Ciclorutas



Samantha Eberhard | UGA MEPD
Data Sources: Alcaldia de Medellín

Transportation Network Medellín, Colombia

2016



Legend

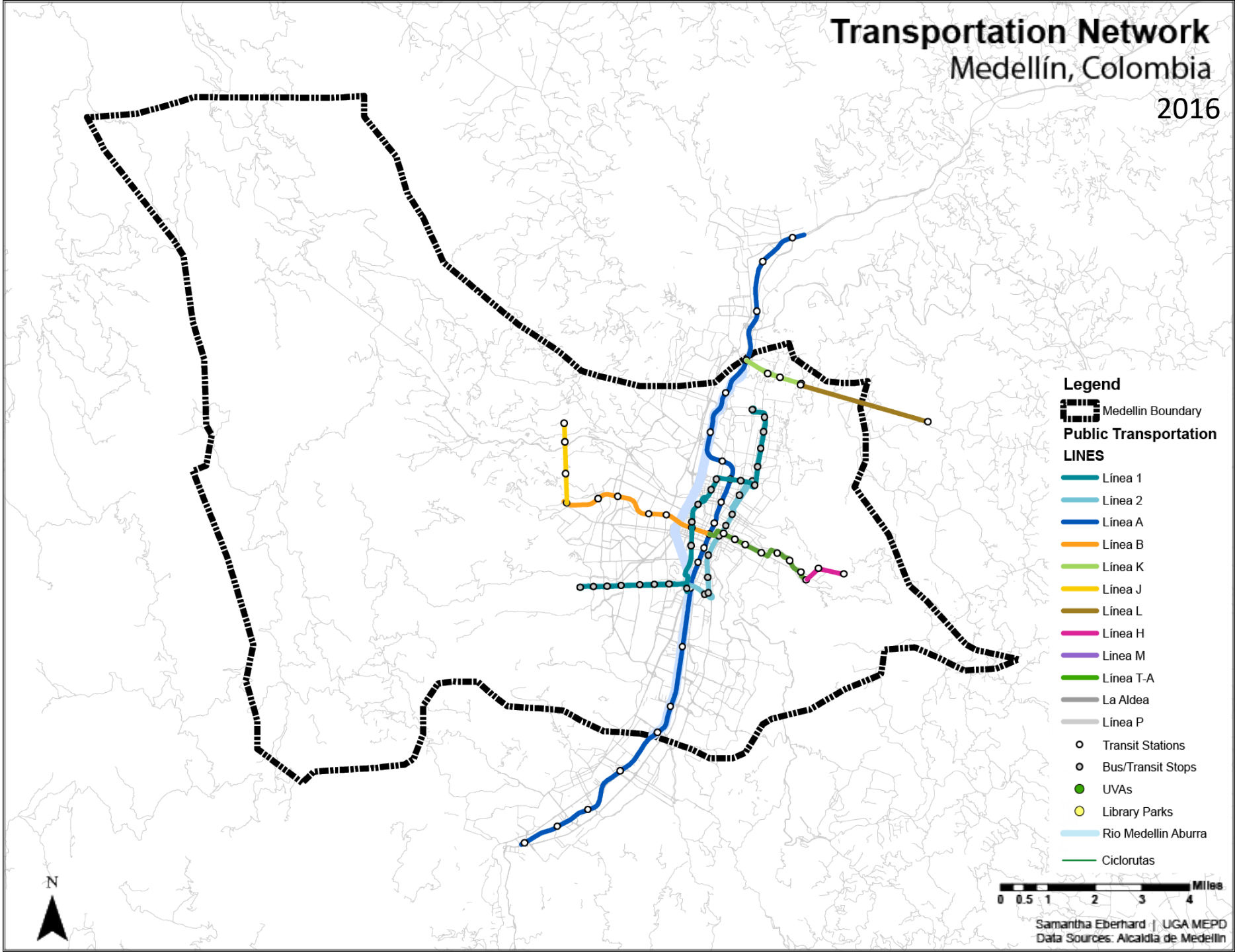
- Medellin Boundary
- Public Transportation LINES**
- Linea 1
- Linea 2
- Linea A
- Linea B
- Linea K
- Linea J
- Linea L
- Linea H
- Linea M
- Linea T-A
- La Aldea
- Linea P
- Transit Stations
- Bus/Transit Stops
- UVAs
- Library Parks
- Rio Medellin Aburra
- Ciclorutas



Samantha Eberhard | UGA MEPD
Data Sources: Alcaldia de Medellín

Transportation Network Medellín, Colombia

2016



Legend

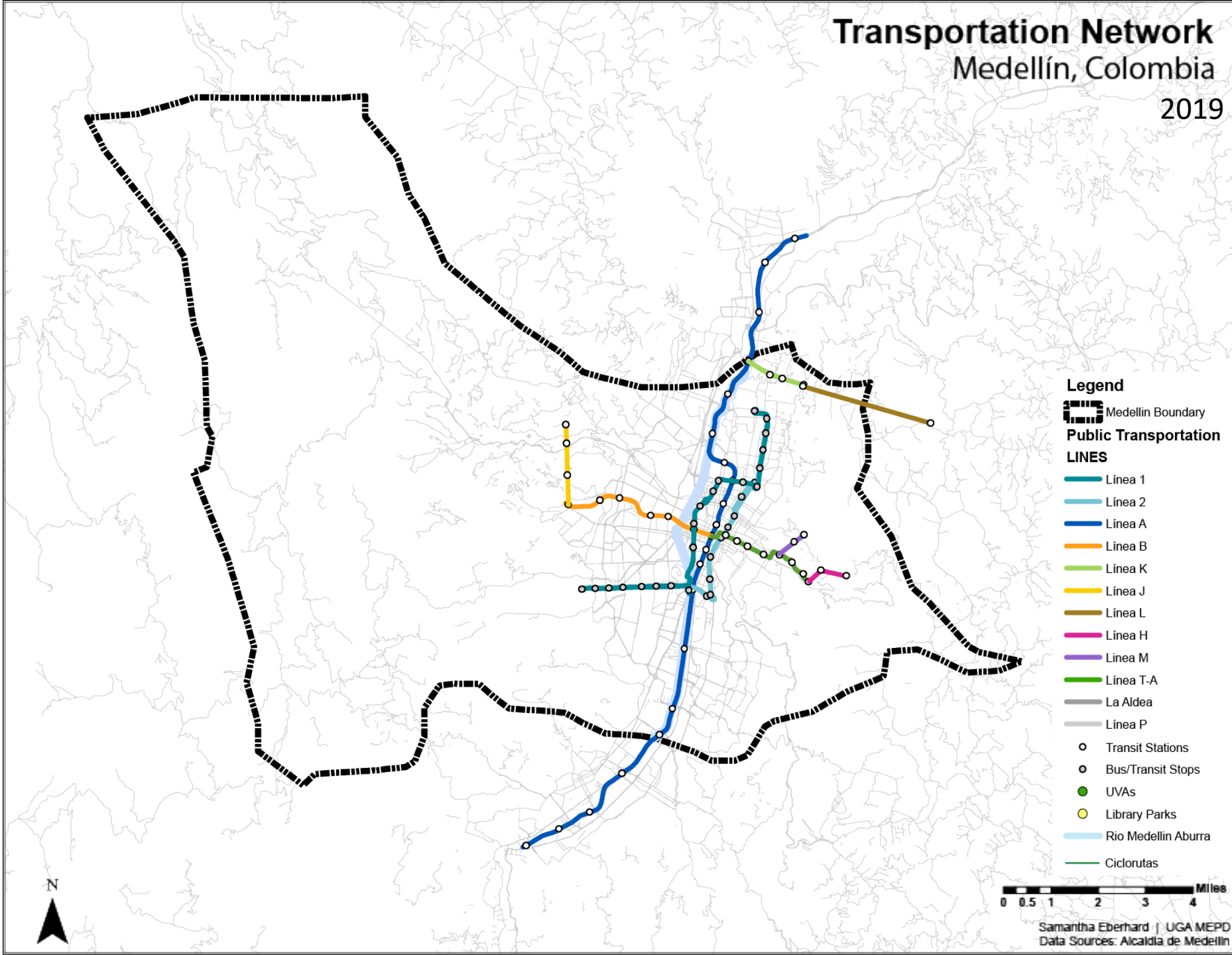
- Medellin Boundary
- Public Transportation LINES**
- Linea 1
- Linea 2
- Linea A
- Linea B
- Linea K
- Linea J
- Linea L
- Linea H
- Linea M
- Linea T-A
- La Aldea
- Linea P
- Transit Stations
- Bus/Transit Stops
- UVAs
- Library Parks
- Rio Medellin Aburra
- Ciclorutas

0 0.5 1 2 3 4 Miles

Samantha Eberhard | UGA MEPD
Data Sources: Alcaldia de Medellín

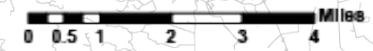
Transportation Network Medellín, Colombia

2019



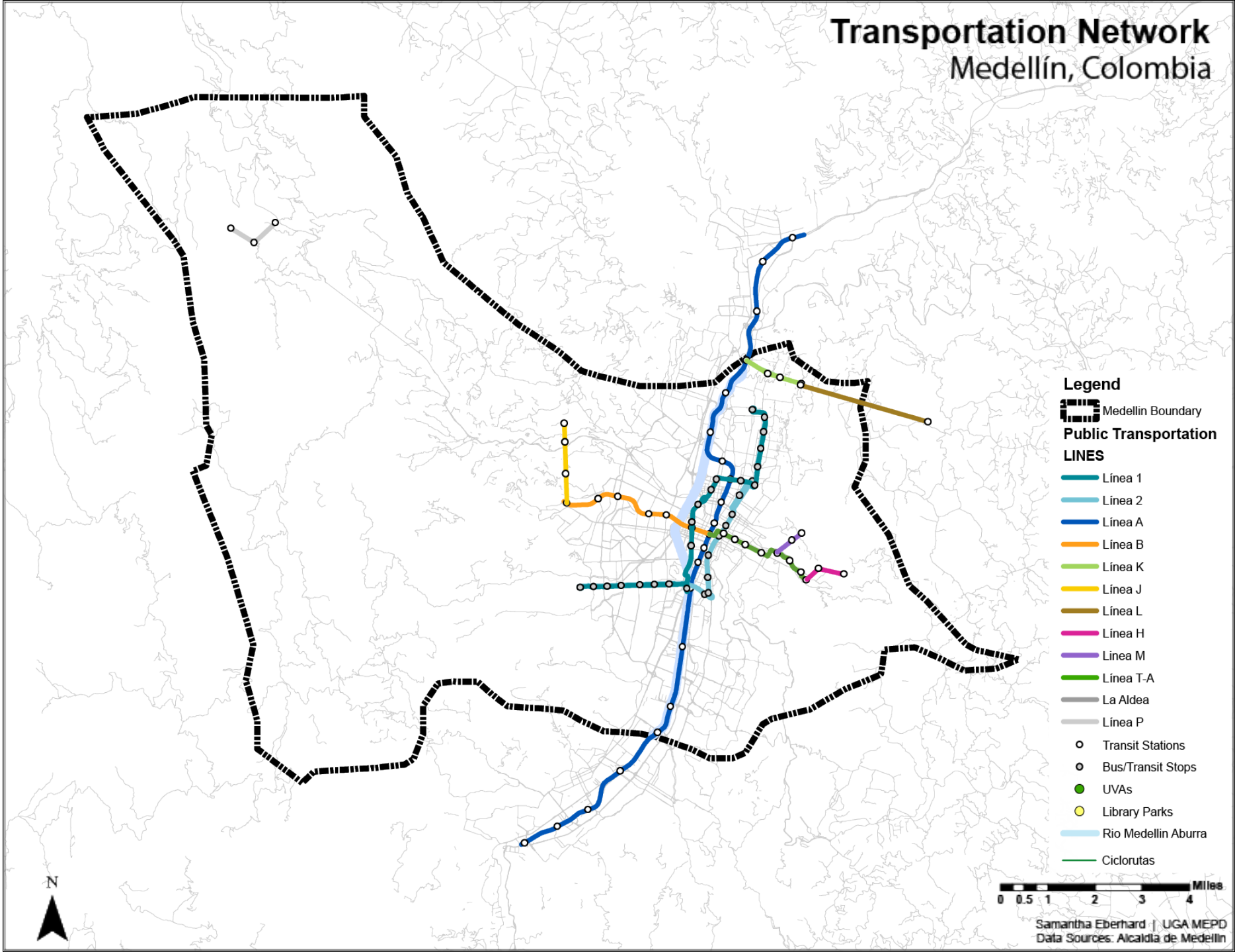
Legend

- Medellin Boundary
- Public Transportation LINES**
- Linea 1
- Linea 2
- Linea A
- Linea B
- Linea K
- Linea J
- Linea L
- Linea H
- Linea M
- Linea T-A
- La Aldea
- Linea P
- Transit Stations
- Bus/Transit Stops
- UVAs
- Library Parks
- Rio Medellín Aburra
- Ciclorutas



Samantha Eberhard | UGA MEPD
Data Sources: Alcaldia de Medellín

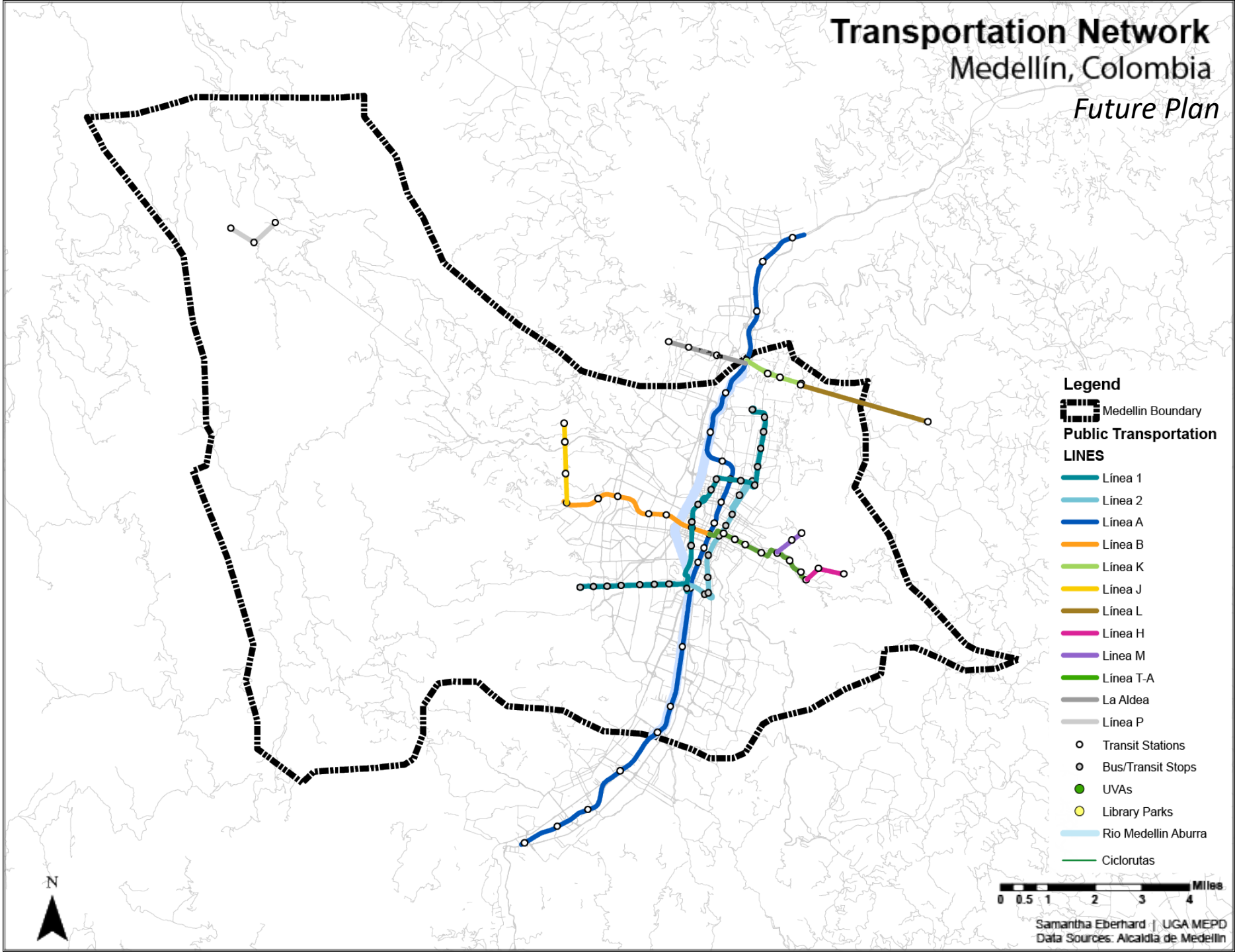
Transportation Network Medellín, Colombia



- Legend**
- Medellin Boundary
 - Public Transportation LINES**
 - Linea 1
 - Linea 2
 - Linea A
 - Linea B
 - Linea K
 - Linea J
 - Linea L
 - Linea H
 - Linea M
 - Linea T-A
 - La Aldea
 - Linea P
 - Transit Stations
 - Bus/Transit Stops
 - UVAs
 - Library Parks
 - Rio Medellín Aburra
 - Ciclorutas

0 0.5 1 2 3 4 Miles

Transportation Network Medellín, Colombia *Future Plan*

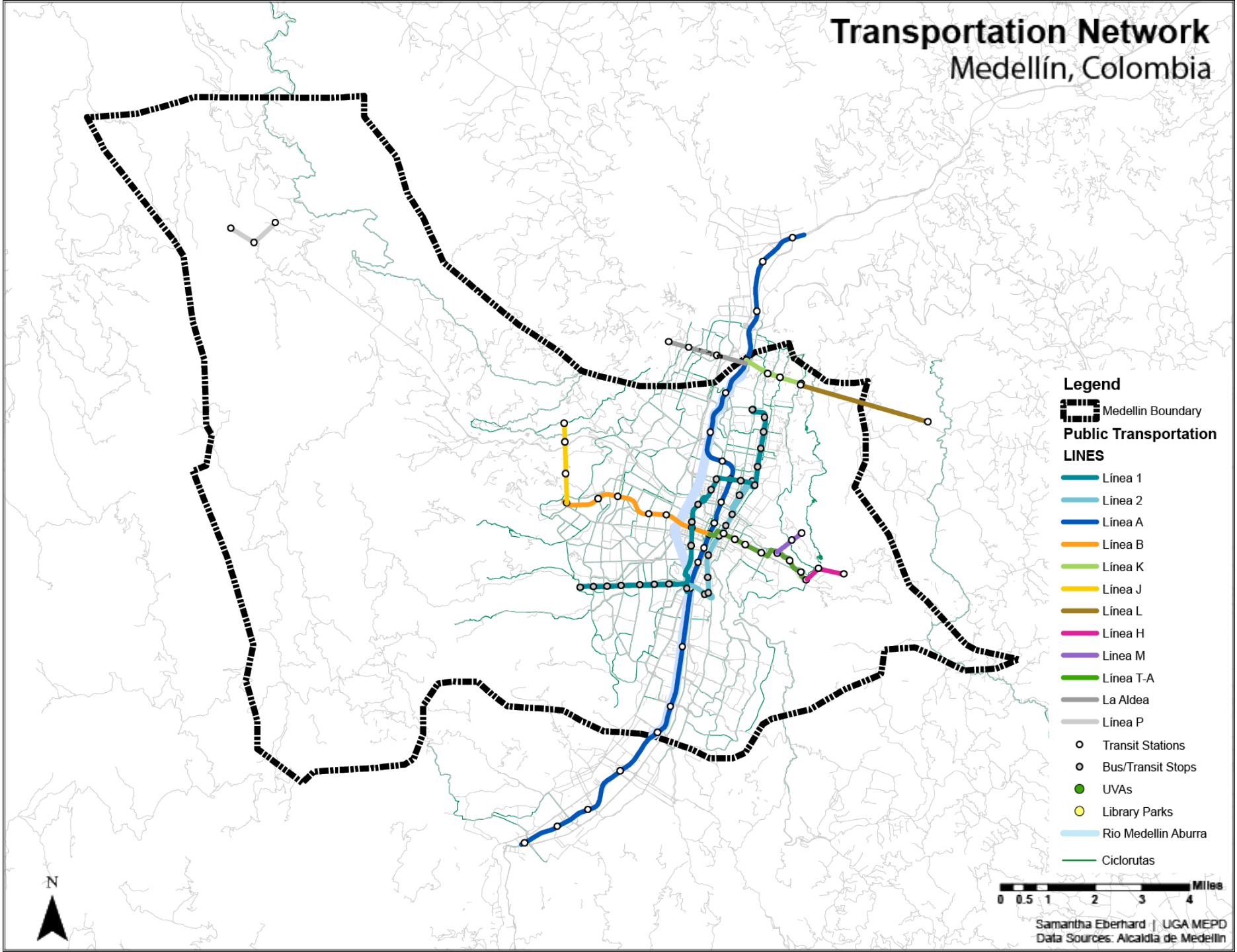


- Legend**
- Medellin Boundary
 - Public Transportation LINES**
 - Linea 1
 - Linea 2
 - Linea A
 - Linea B
 - Linea K
 - Linea J
 - Linea L
 - Linea H
 - Linea M
 - Linea T-A
 - La Aldea
 - Linea P
 - Transit Stations
 - Bus/Transit Stops
 - UVAs
 - Library Parks
 - Rio Medellín Aburra
 - Ciclorutas

0 0.5 1 2 3 4 Miles

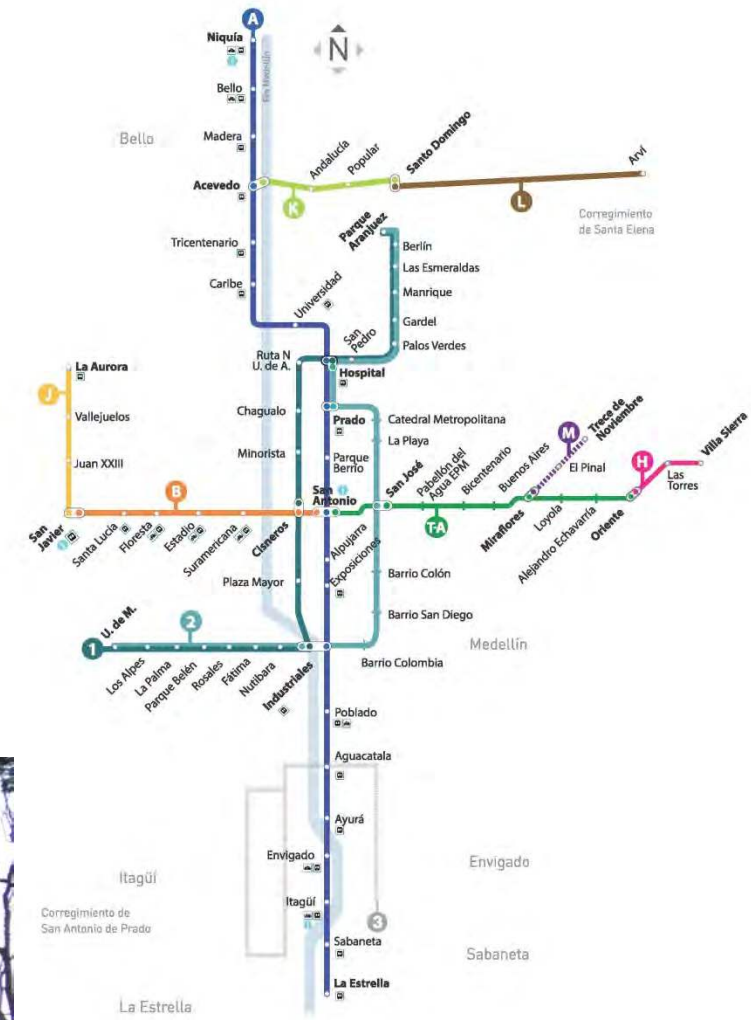
Samantha Eberhard | UGA MEPD
Data Sources: Alcaldía de Medellín

Transportation Network Medellín, Colombia



- Legend**
- Medellin Boundary
 - Public Transportation LINES**
 - Linea 1
 - Linea 2
 - Linea A
 - Linea B
 - Linea K
 - Linea J
 - Linea L
 - Linea H
 - Linea M
 - Linea T-A
 - La Aldea
 - Linea P
 - Transit Stations
 - Bus/Transit Stops
 - UVAs
 - Library Parks
 - Rio Medellín Aburra
 - Ciclorutas

0 0.5 1 2 3 4 Miles



LÍNEAS / Lines

METRO / Metro

Línea A Niquía - La Estrella - Niquía

Línea B San Antonio - San Antonio

CABLE / Cable

Línea C Oriente - Villa Sierra - Oriente

Línea D San Javier - La Aurora - San Javier

Línea E Avenida del Ferrocarril - Santo Domingo - Avenal

Línea F Santo Domingo - Avenal - Santo Domingo

Línea G Miraflores - Treco de Noviembre - Miraflores

TRANVÍA / Trams

Línea H San Antonio - Oriente - San Antonio

BUS / Bus

Línea I U. de M. - Av. del Ferrocarril - Parque Aranzazu - Av. del Ferrocarril - U. de M.

Línea J U. de M. - Av. Oriental - Parque Aranzazu - Av. Oriental - U. de M.

CONVENCIONES / Conventions

Estación / Station

Paradero / Stop

Transferecia directa / Direct transfer

Transferecia peatonal / Pedestrian transfer

Ruta integrada / Integrated route

Parquesurcos para bicicletas / Bicycle parking

PAC Punto de Atención al Cliente / Customer Service Point (CSO)

Todas las estaciones / All stations have access for persons with reduced mobility

En construcción / Under construction

Estación fuera de servicio / Out of service

HOLA METRO 444 95 98



METRO DE MEDELLÍN
CALIDAD DE VIDA



Metrocables





Buses & Metroplus BRT



Tranvia / Tram





Bicycle and Pedestrian Infrastructure



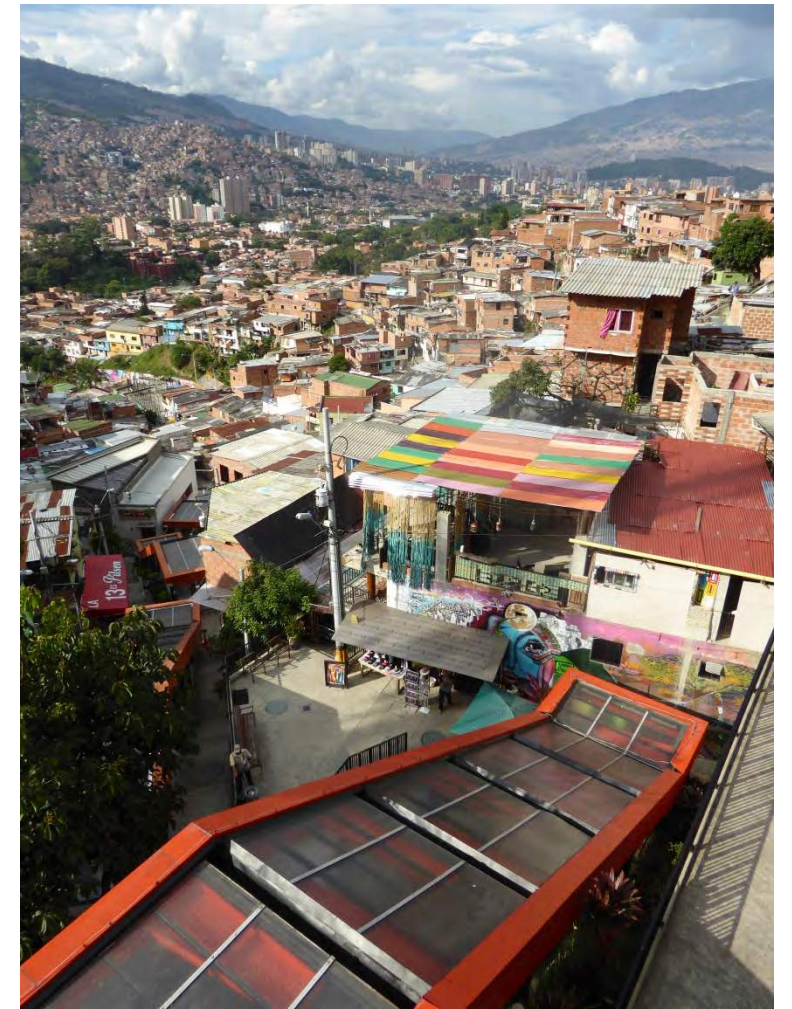
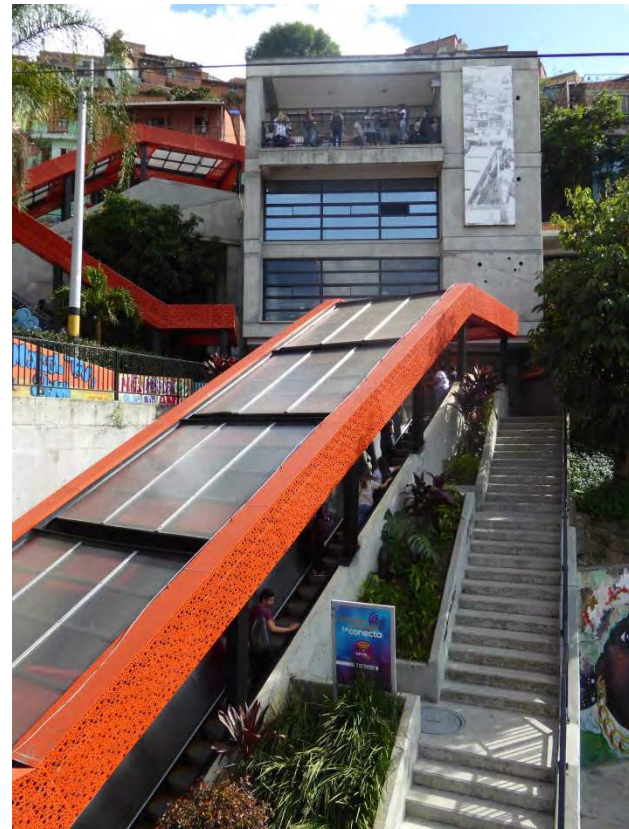


Encicla Bike Share Program





Escalators / Electric Stairs

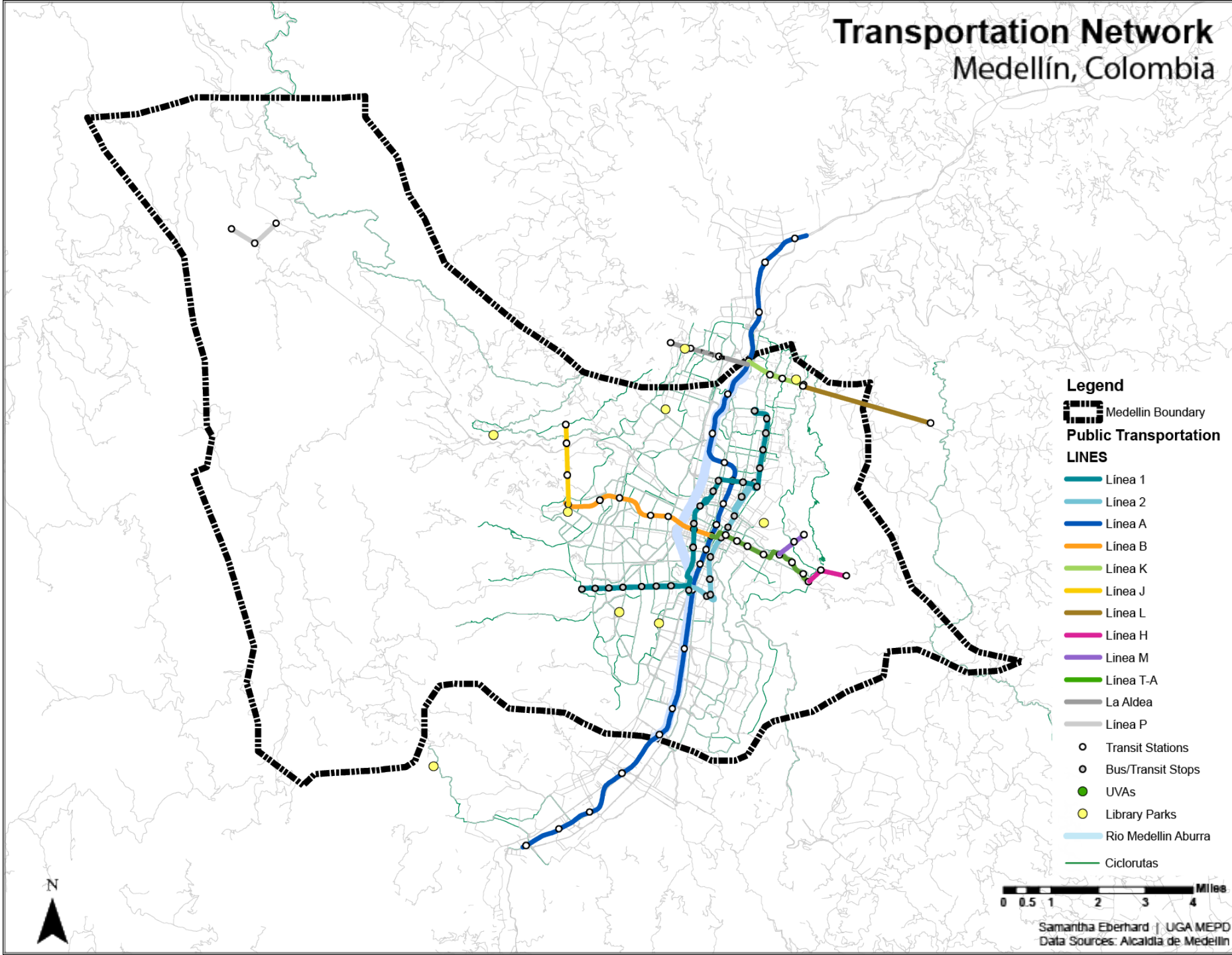


Library Parks / Parques Bibliotecas

- System of public library parks
- Combining the valuable characteristics of a library and a park in one
- Spaces for social integration and wellbeing



Transportation Network Medellín, Colombia

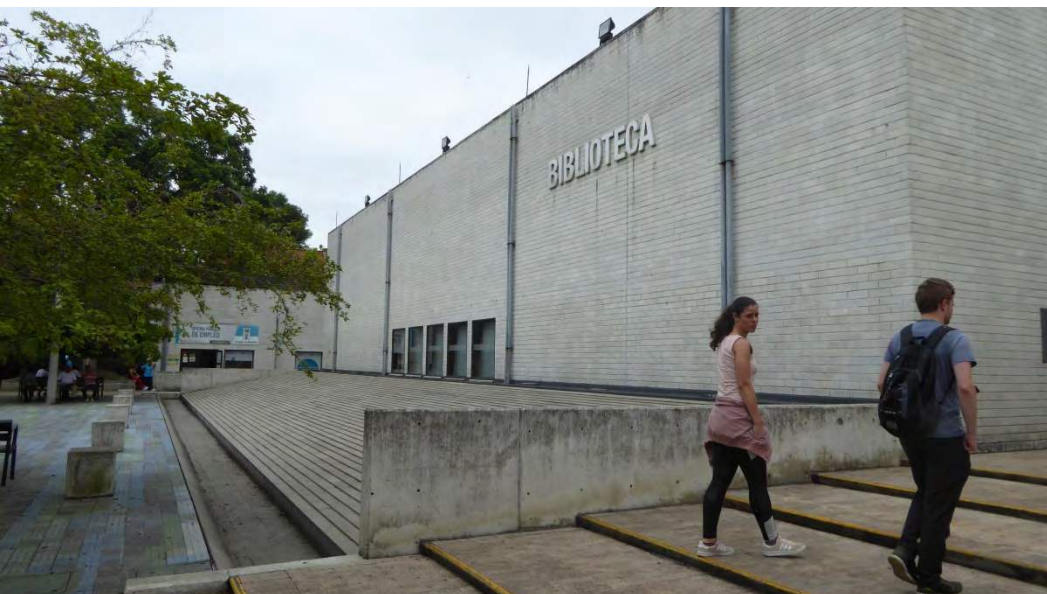
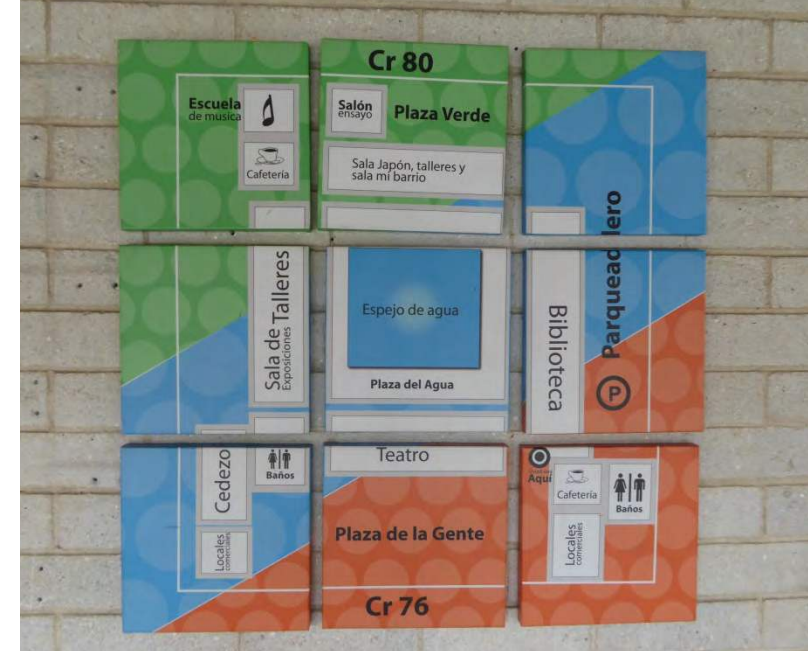


Legend

- Medellin Boundary
- Public Transportation LINES**
- Linea 1
- Linea 2
- Linea A
- Linea B
- Linea K
- Linea J
- Linea L
- Linea H
- Linea M
- Linea T-A
- La Aldea
- Linea P
- Transit Stations
- Bus/Transit Stops
- UVAs
- Library Parks
- Rio Medellín Aburra
- Ciclorutas

0 0.5 1 2 3 4 Miles





Unidades de Vida Articulada (UVA)

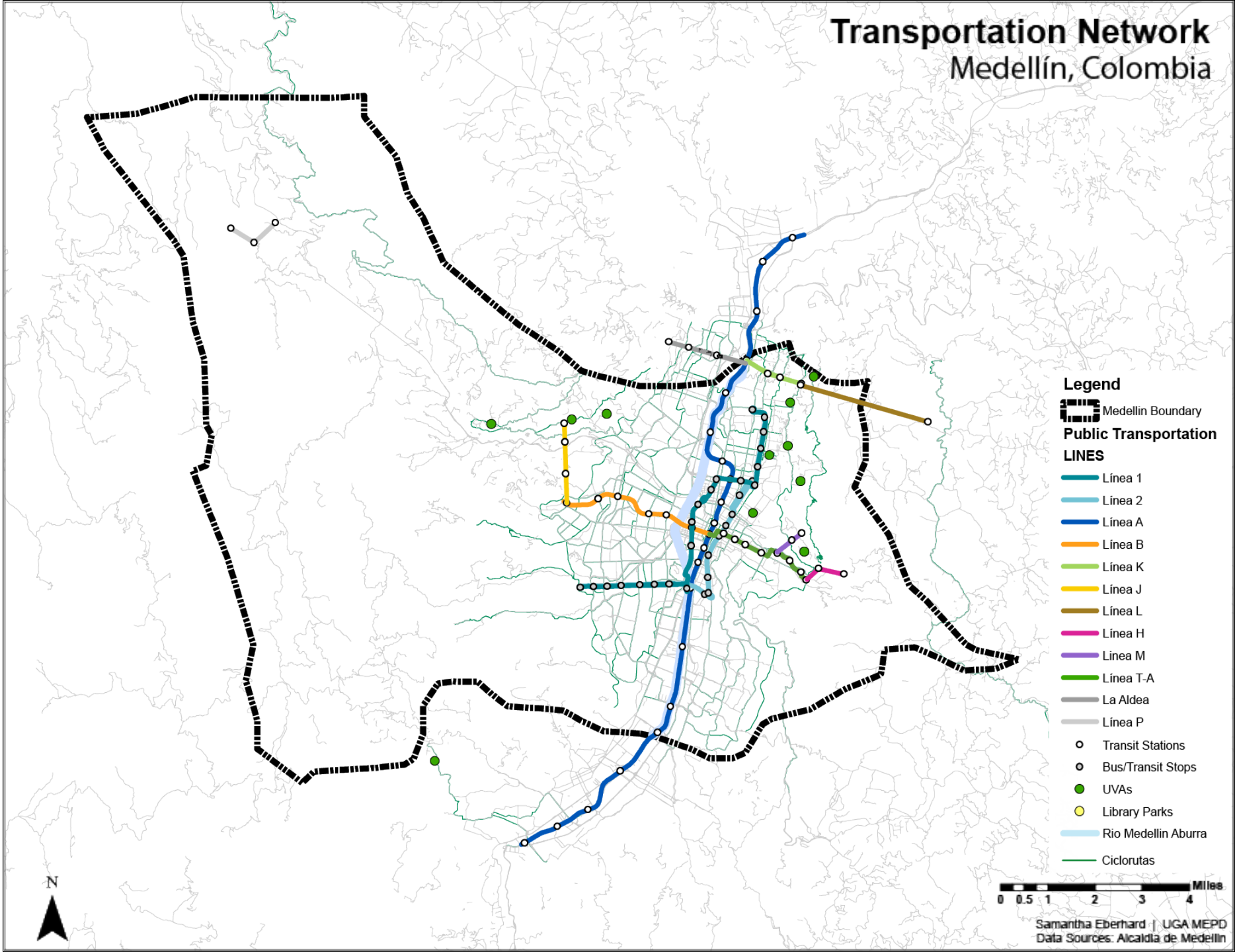
Articulated Life Units

- Private water tank lots → public parks and open spaces
- Began in 2004
- Maintained and operated by EPM (Empresas Publicas de Medellín)
 - Arts programs, cultural and community programs
 - Interaction with the community
 - Services provided
- 14 projects implemented
- Each UVA has a social leader



estamos ahí.

Transportation Network Medellín, Colombia



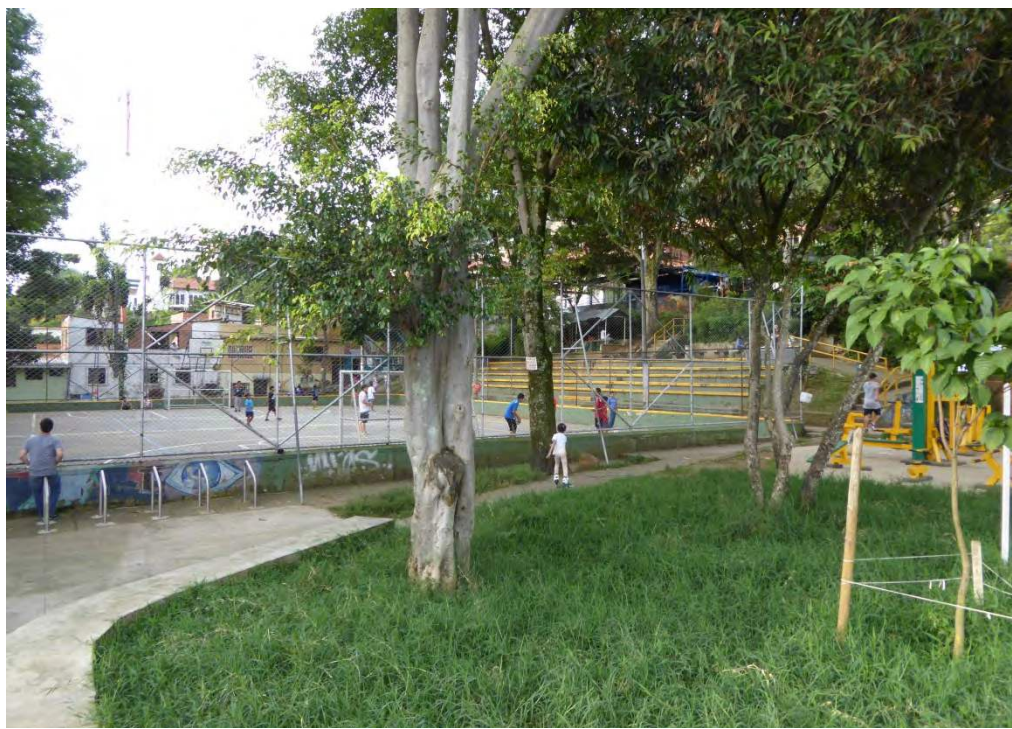
Legend

- Medellin Boundary
- Public Transportation LINES**
- Linea 1
- Linea 2
- Linea A
- Linea B
- Linea K
- Linea J
- Linea L
- Linea H
- Linea M
- Linea T-A
- La Aldea
- Linea P
- Transit Stations
- Bus/Transit Stops
- UVAs
- Library Parks
- Rio Medellín Aburra
- Ciclorutas

0 0.5 1 2 3 4 Miles









Parque del Rio and the Linear Park Project

- 1st park in the system of metro linear parks
- 1st large scale landscape architecture project in the city
- International public contest/competition for the design
 - Sebastian Monsalve
- Goals of the linear park project
 - Bring life to the river
 - Connect the two sides of the river
 - Give the river back to the people
 - The river as a connector, not a divider





Parque del Rio





City Branding & Citizen Participation



Takeaways

- Transportation, accessibility, and connectivity is key
- Importance of public spaces for community gathering, recreation, education, access to services, etc.
- A sense of being a part of the city



If Medellín can transform its city of corruption and violence into the most innovative city in nearly 20 years, imagine what Atlanta, or Georgia as a whole, could do in the next 20 years starting from an already higher place of power and capital...

Thank you!

Special thanks to:

- Universidad Pontificia Bolivariana professors, lecturers, & students
- Red Tree Study Coordinators
- John Crowley Travel Scholarship
- UGA MEPD



References

- De Bernardi Campora, Manuel A. *Medellin: El sueño de una ciudad. The dream of a city.* 2015.
- <https://reddebibliotecas.org.co/grupos/sbpm>
- <https://medellinguru.com/metro/>
- <https://geomedellin-m-medellin.opendata.arcgis.com/>
- <https://www.diva-gis.org/gdata>
- https://arquitectura.medellin.unal.edu.co/escuelas/habitat/galeria/displayimage.php?album=77&pid=1888#top_display_media
- <https://medellin.travel/en/destinations/uva-articulated-life-units/>
- <https://www.theguardian.com/cities/2015/may/01/medellin-bury-highway-urban-intervention>
- <https://www.planetizen.com/node/61006>

Thank you!

Samantha Eberhard
sameber@uga.edu

Master of Urban Planning and Design (MEPD)
College of Environment and Design
University of Georgia



College of
Environment + Design
UNIVERSITY OF GEORGIA

50
1969
2019

Celebrating Our 50th Anniversary