

Planning Trends & Hot Topics – Planning for Seniors, Green Planning, Public Markets

Dan Reuter, Atlanta Regional Commission

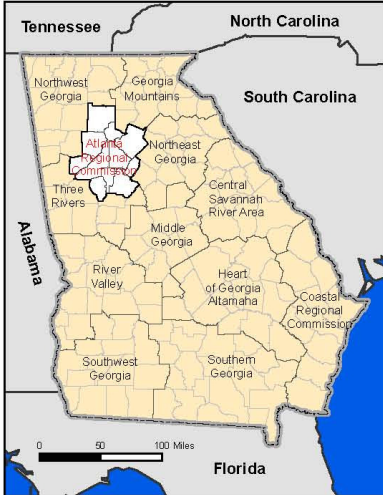


The Metropolitan Atlanta region has grown into a complex combination of counties, municipalities and jurisdictional boundaries. This map series reflects the various planning areas of the Atlanta Regional Commission (ARC) and seeks to promote a greater understanding of our rapidly expanding region. Please refer to the user notes accompanying each map for explanation of map content and clarification of acronyms and definitions.

The Atlanta Region

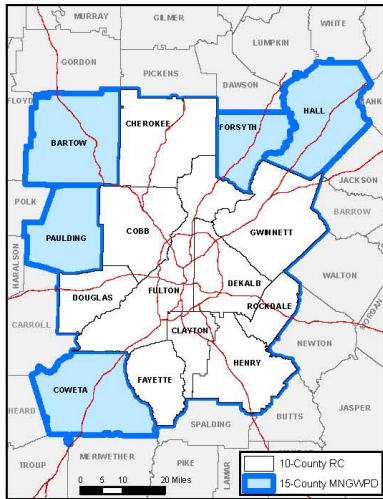
Atlanta Regional Commission
 40 Courtland St. NE
 Atlanta, Georgia 30303
 404-483-3100
 www.atlantaregional.com

State of Georgia Regional Commissions

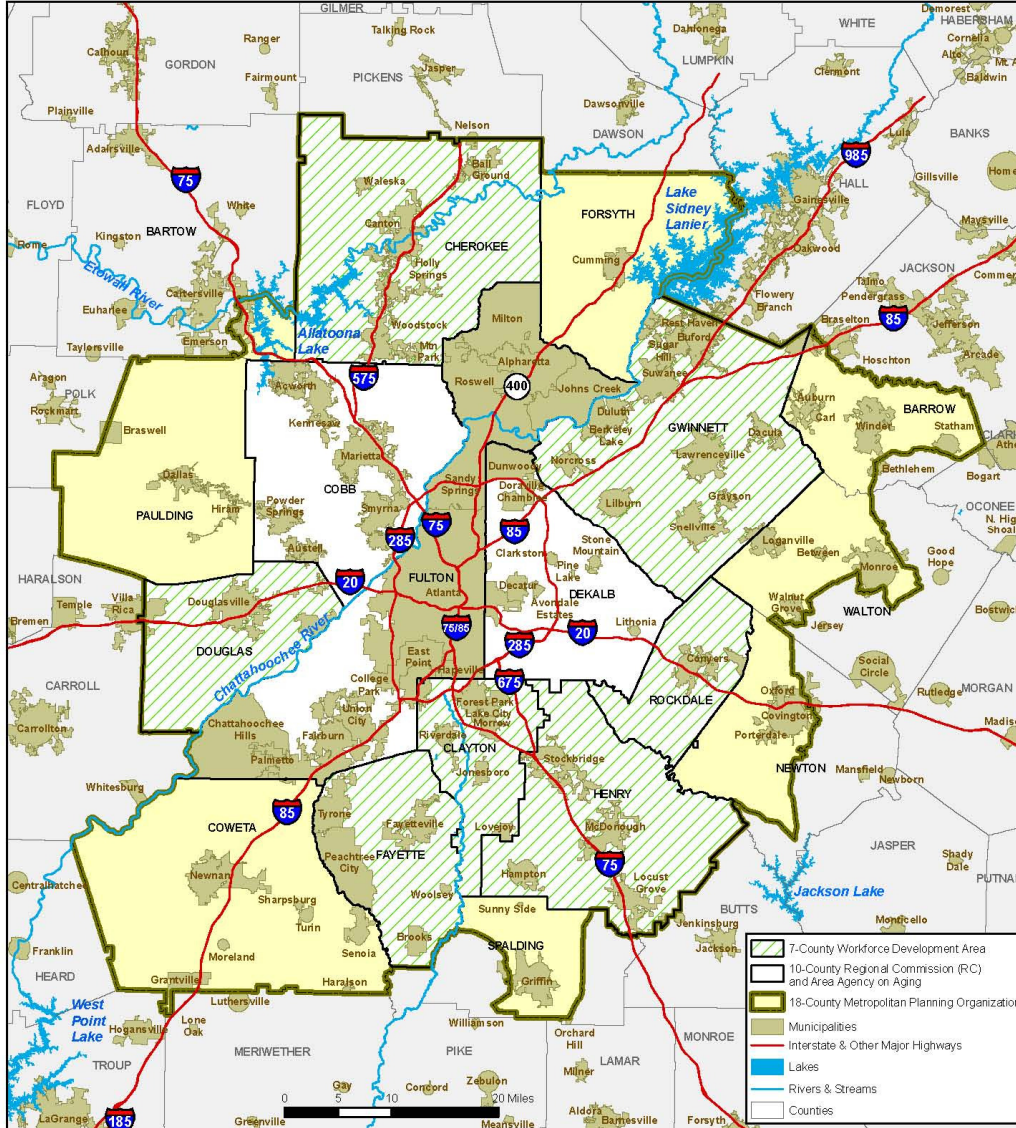


The Atlanta Regional Commission is one of 12 Regional Commissions (RCs), as currently established by the Board of the Department of Community Affairs according to OCGA§9-8-30, in order to develop, promote and assist in establishing coordinated and comprehensive planning, to assist local governments, and promote the essential public interests of the state and its citizens. RCs are multi-county planning and development agencies serving municipal and county governments, providing professional technical assistance to state and federal agencies as well as to local governments in advancing quality growth and development. Georgia's RCs are involved in such activities as comprehensive planning, land use development, historic preservation, aging services, revolving loan funds, business retention and development, affordable housing, global economics, tourism, defense conversion, workforce development, coordinated transportation, telecommunications and technology, geographic information systems and disaster mitigation planning.

Metropolitan North Georgia Water Planning District



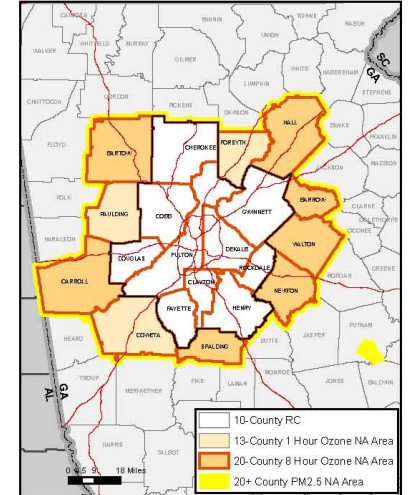
This map represents the boundary of The Metropolitan North Georgia Water Planning District, which provides water resource plans, policies and coordination for metropolitan Atlanta. The District has developed regional plans for stormwater management, wastewater treatment and water supply and water conservation. The 15-county Water Planning District includes the ten counties in the RC plus five additional counties (Bartow, Coweta, Forsyth, Hall, & Paulding). For more information please consult www.northgeorgiawater.org.



This map represents ARC's Workforce Development Area (WFD), Regional Commission (RC), Area Agency on Aging (AAA) and Metropolitan Planning Organization (MPO) boundaries which are defined as follows:

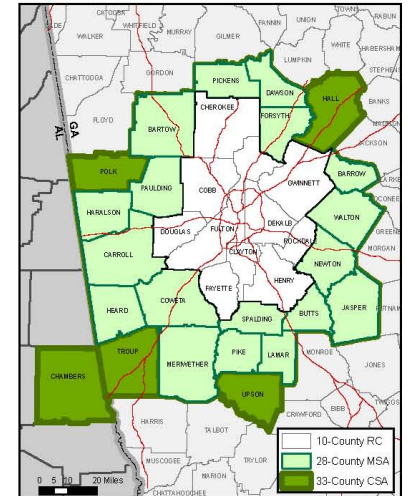
- The Workforce Development Area (WFD) is a seven-county area created by agreement of county chief-elected officials, administered by the Atlanta Regional Commission and funded for training and employment activities under the federal Workforce Investment Act (WIA). For more information on ARC's Workforce Development programs and services please consult www.atlantaregional.com/workforce.
- The Regional Commission (RC) is a 10-county area designated by State law to be the area-wide planning agency for all federal and state programs which require or encourage area wide planning. Programs and services provided by ARC to the region include comprehensive planning (transportation, environmental and land use planning), research and information processing, review of local development, community services (workforce development, social services for the elderly, services to local governments), leadership development and community outreach. For more information on ARC's programs and services please consult www.atlantaregional.com.
- The Area Agency on Aging (AAA) is a 10-county area funded by the Department of Human Resources and designated by the Older Americans Act to plan for the needs of the rapidly expanding group of older citizens in the Atlanta region. It is part of a statewide network of 12 AAAs and a national network of more than 670 AAAs. For more information on aging services please consult www.agingconnection.com.

U.S. EPA Non-Attainment Areas



This map represents each of the air quality non-attainment area (NAA) boundaries that affect the Atlanta metro area. The 15-county non-attainment area for the one-hour ozone standard, in place for the last 15 years, was revoked in 2005. A revised, more stringent eight-hour ozone standard is now in place, resulting in an expansion of the Atlanta non-attainment area to include 20 counties. In addition, a new fine particulate matter standard (PM_{2.5}) is now in place. The non-attainment area under this standard includes the 20-county, eight-hour ozone nonattainment area, plus a small portion of Heard and Putnam counties.

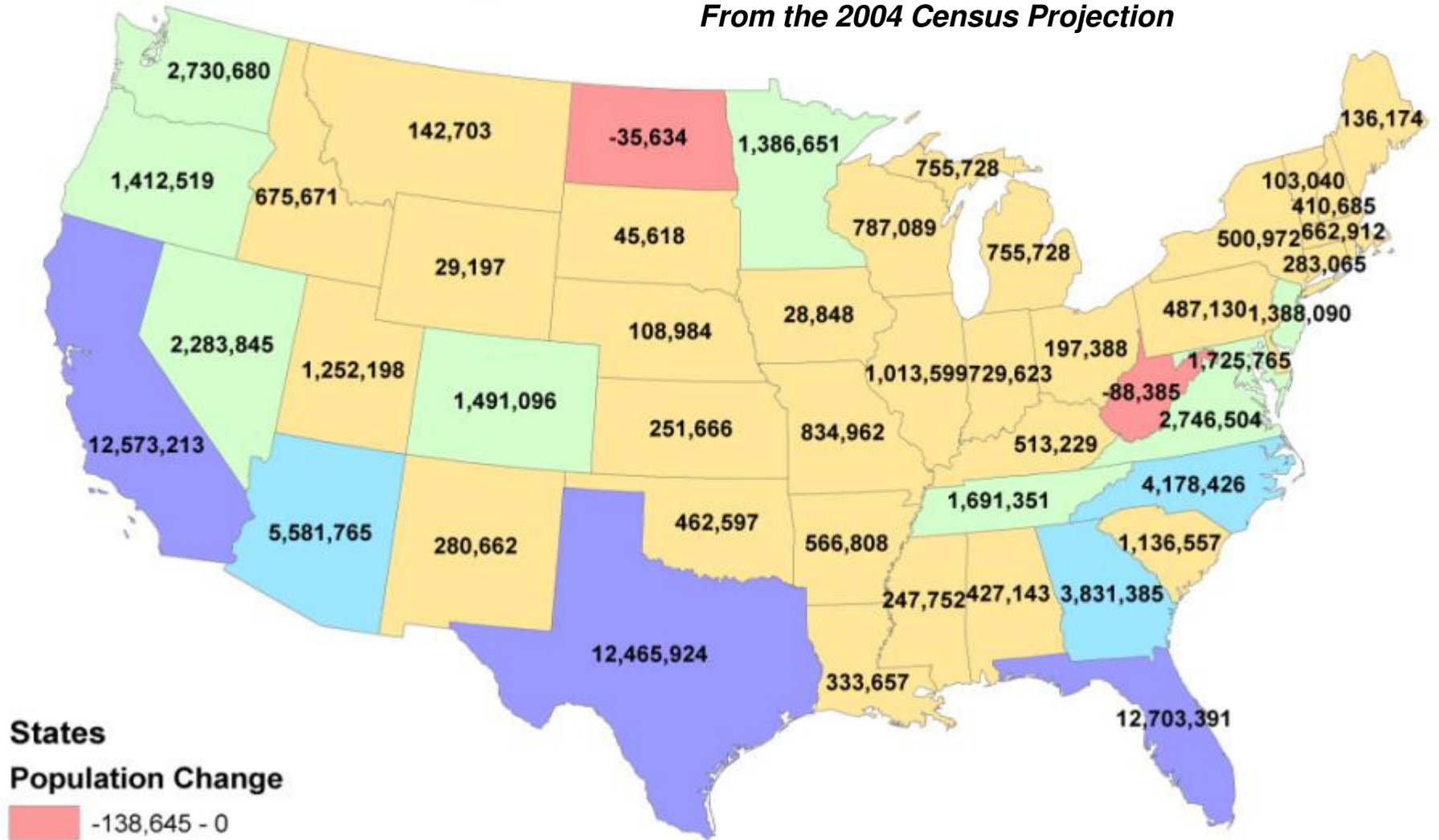
U.S. Census Bureau Statistical Areas



This map represents the expanded Atlanta Metropolitan Statistical Area (MSA) from its previous 20-county area to 28-county "Atlanta-Sandy Springs-Marietta" MSA. The larger 33-county "Atlanta-Sandy Springs-Gainesville, GA-AL" Combined Statistical Area (CSA) includes the 28 counties of the MSA, along with the Gainesville (GA) MSA and the metropolitan statistical areas of Cedartown, LaGrange and Thomaston (GA) plus Valley (AL). The U.S. Office of Management and Budget (OMB) defines CSAs, MSAs and the smaller metropolitan statistical areas nationwide according to published standards applied to U.S. Census Bureau data. These various statistical areas describe substantial core areas of population together with adjacent communities having a high degree of economic and social integration, often illustrated in high rates of commuting from the adjacent areas to job locations in the core. For more information, please consult <http://www.census.gov/popest/data/metro/totals/metrodef.html>.

State Population Projections 2000 to 2030

From the 2004 Census Projection



States

Population Change

- 138,645 - 0
- 1 - 1,252,198
- 1,252,199 - 2,746,504
- 2,746,505 - 5,581,765
- 5,581,766 - 12,703,391

128 Million More People
Between 2010 and 2050

Source : Census Bureau

Pop Quiz



1. City dwellers have longer and thicker nose hair than country dwellers
2. Real estate agents typically ask owners the value of home and then subtract 10%
3. The U.S. has 40 percent of all global mail volume
4. Girls have larger brains than boys



More Non-“Traditional” Households



<u>Household Type</u>	<u>1970</u>	<u>2000</u>	<u>2030</u>
Family HH(2 parent)	81%	69%	65%
With Children	40%	32%	21%
Non-family HH	19%	31%	35%
Living Alone	17%	25%	29%



The Age Pyramid

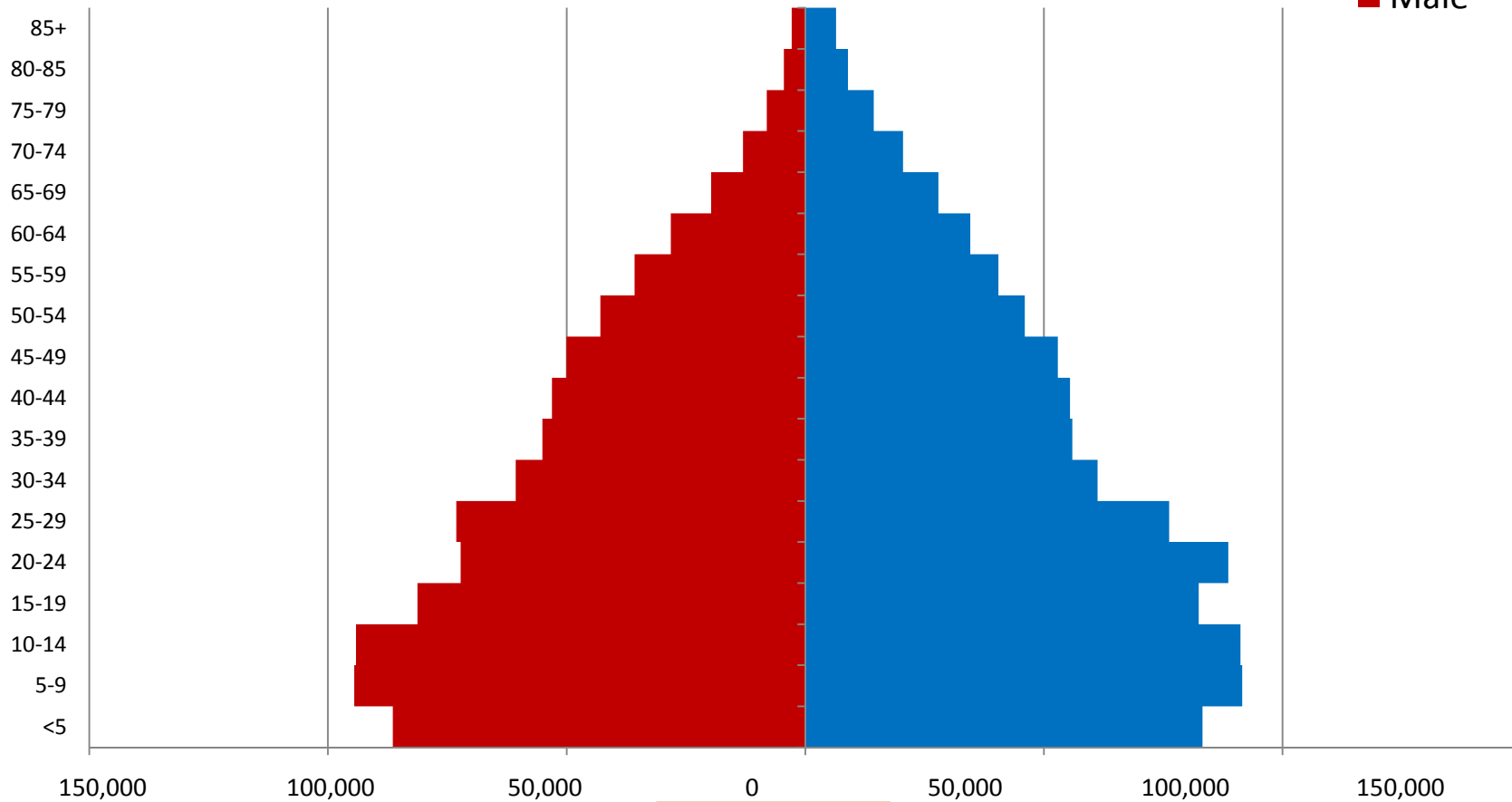


20-County Forecast Area

1970 Age Structure

■ Female

■ Male

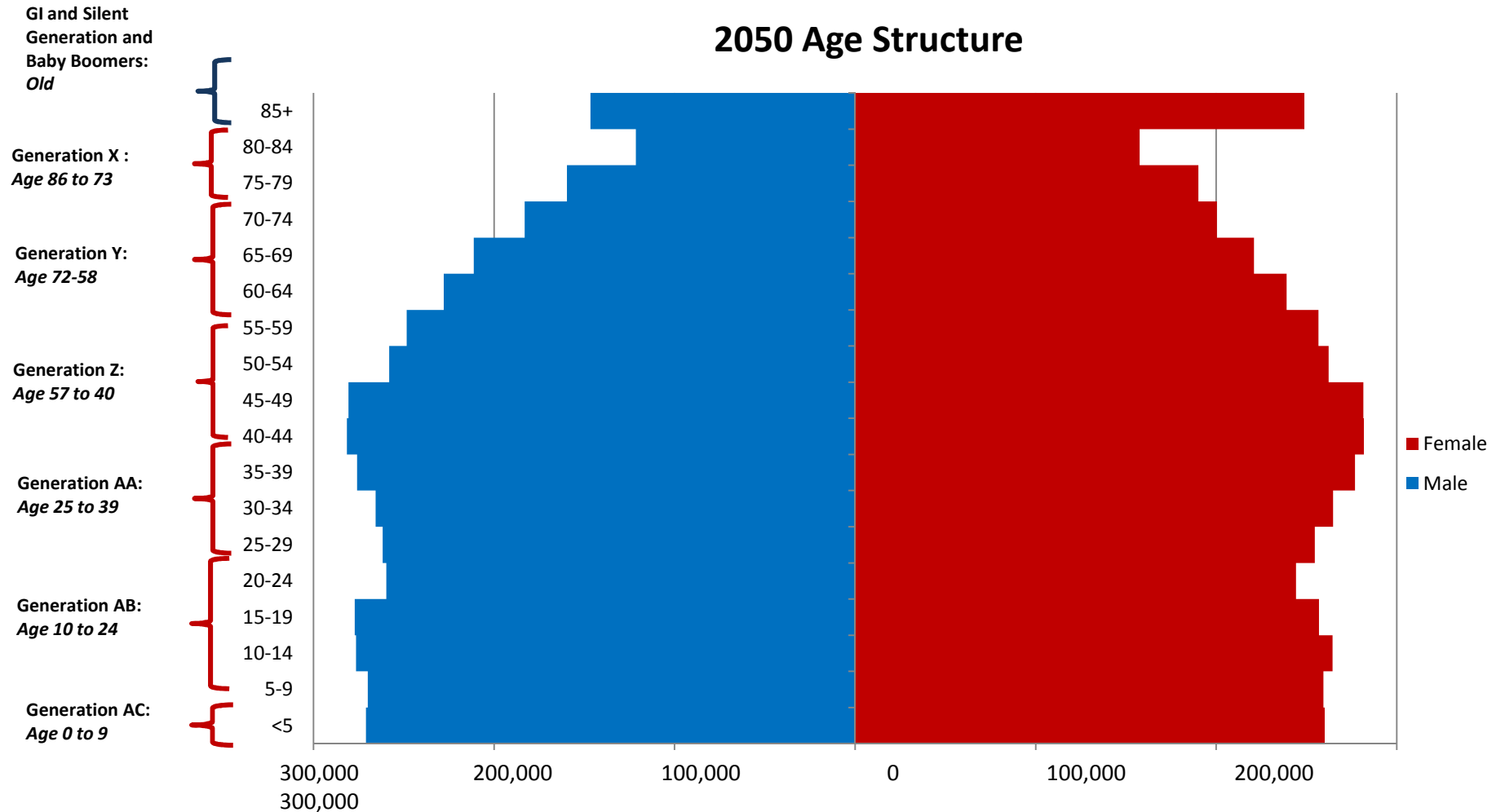


2050



20-County Forecast Area

2050 Age Structure



Source: PLAN2040 Forecasts v4

Lifelong Community

• a place individuals can live throughout their lifetime.

• provides a full range of options to residents, insuring a high quality of life for all.

Promote Housing and Transportation Options

Wide range of housing options to meet wide range of needs. Housing options must be affordable, accessible, located close to services and available within existing communities.

Mobility options to insure that as individuals age they can access basic services and remain independent.

New Construction

Existing Housing

Alternatives to the Car

Safe Roads and Safe Drivers

Walkable Communities

Encourage Healthy Lifestyles

Create environments that promote physical activity, social interaction and easy access to healthcare.

Physical Activity

Access to basic healthcare

Preventive healthcare

Expand Information and Access Services

Strengthen and modernize the current education and information network to meet the complicated long term care needs of a population that demands choice.

Education targeted to older adults/caregivers, professionals

Linkage to Resources

Communication Infrastructure

Pop Quiz



1. More people have died in car wrecks than all U.S. war deaths
2. More snow occurs in Grand Canyon than Minneapolis
3. Central Park in NYC is twice the size of the country of Monaco
4. Dogs remember better in the cold than warm weather



Protected Lands Database



- **Ongoing effort to develop and maintain an inventory of existing parks and greenspace in the Atlanta region.**
 - **Initial inventory completed in 2006**
 - **Annual updates to inventory**
 - **Special studies and inventory adjustments**

- **Establish web-based tool to allow approved agencies to update the inventory, as well as to allow the public to view public accessible properties.**

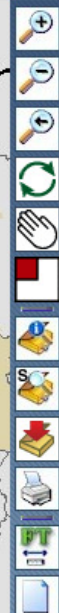
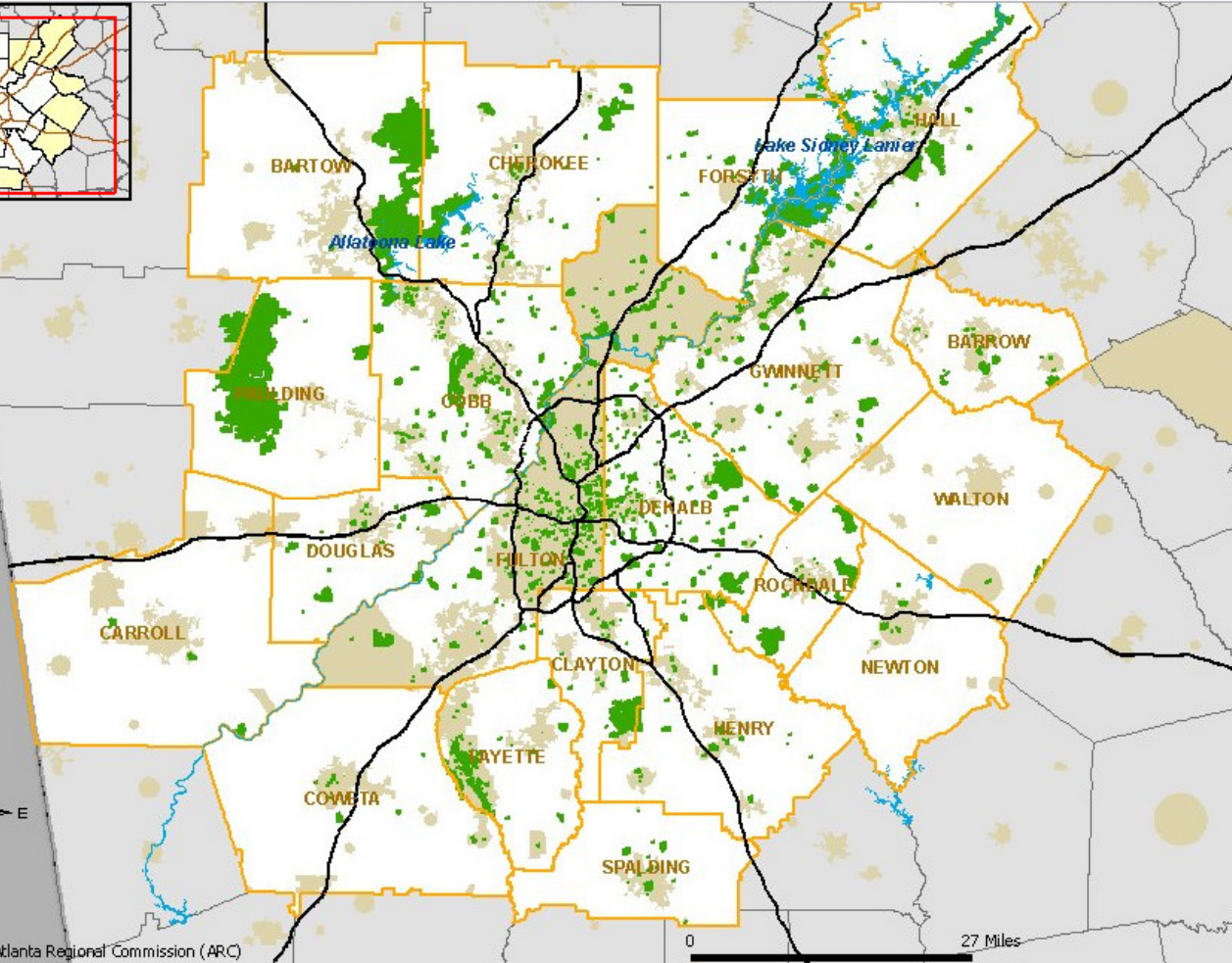
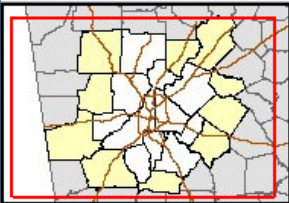
www.atlantaregional.com/greenspace





REGIONAL PARKS AND GREENSPACE

CLEANER STREAMS MAPPING TRANSPORTATION MAPPING GREENSPACE MAPPING ETHNIC COMMUNITY MAPPING



HOME LAYERS LEGEND HELP

Your Map to Parks and Greenspace in the Atlanta Region

Welcome to ARC's Regional Parks and Greenspace interactive mapping Web site. Here you can find parks and greenspace around the region.

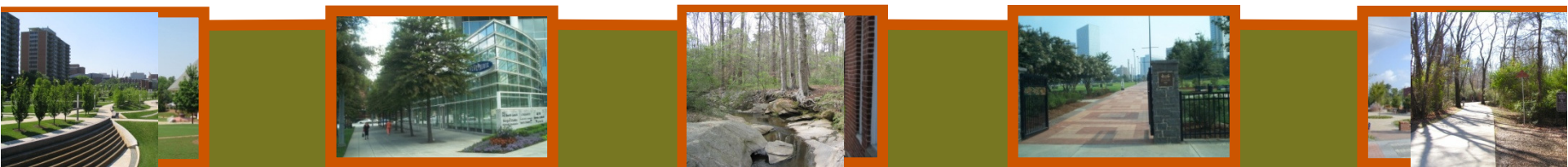
The Inventory is a GIS dataset developed by ARC's Land Use Planning and GIS Divisions. The Inventory allows you to search for parks in greenspace in your area by querying several attributes including county, zip code or nearest city.

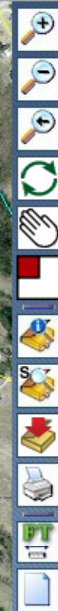
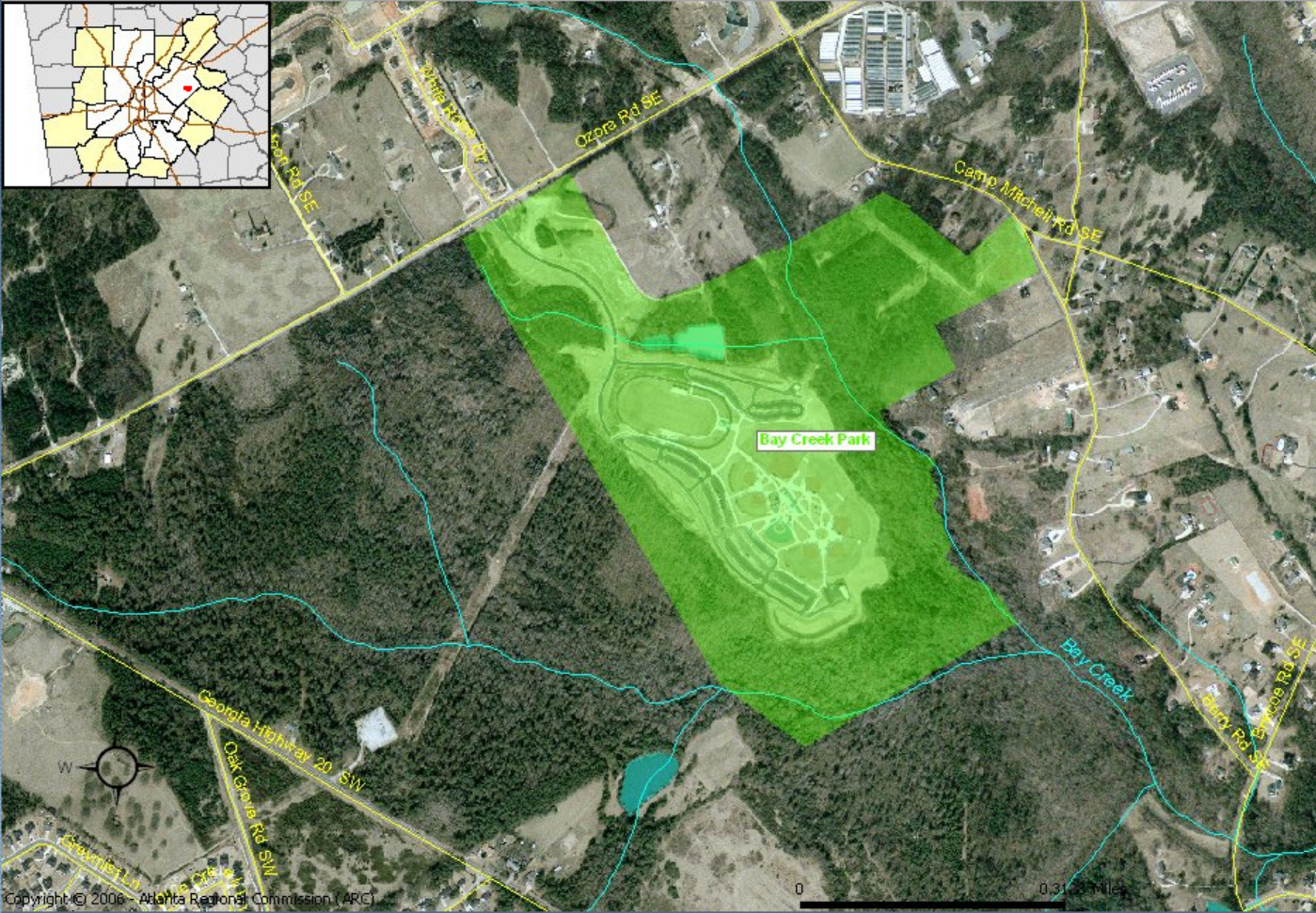
Aerial photography is included in the map when fully zoomed into specific parks. Some park amenities (golf courses, tennis courts, ball fields, lakes, etc.) may be noticeable when aerial photography is present on the map. You may also click the "Help" button for more information.

ARC would like feedback on this interactive mapping feature. Simply click the link below to let us know what you like and don't like. Also, use this link if you would like to tell us about a park or greenspace in your community that is not shown.

Thank you for your interest. Contact Information: Atlanta Regional Commission, 40 Courtland Street, NE, Atlanta, GA 30303, Phone: 404-463-3302, E-Mail: greenspace@atlantaregional.com

Zoom In





Query Regional Parks and Greenspace

Select features by:

- Name
- Type
- Jurisdiction
- County
- City
- Zip Code

OK

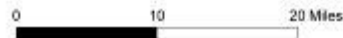
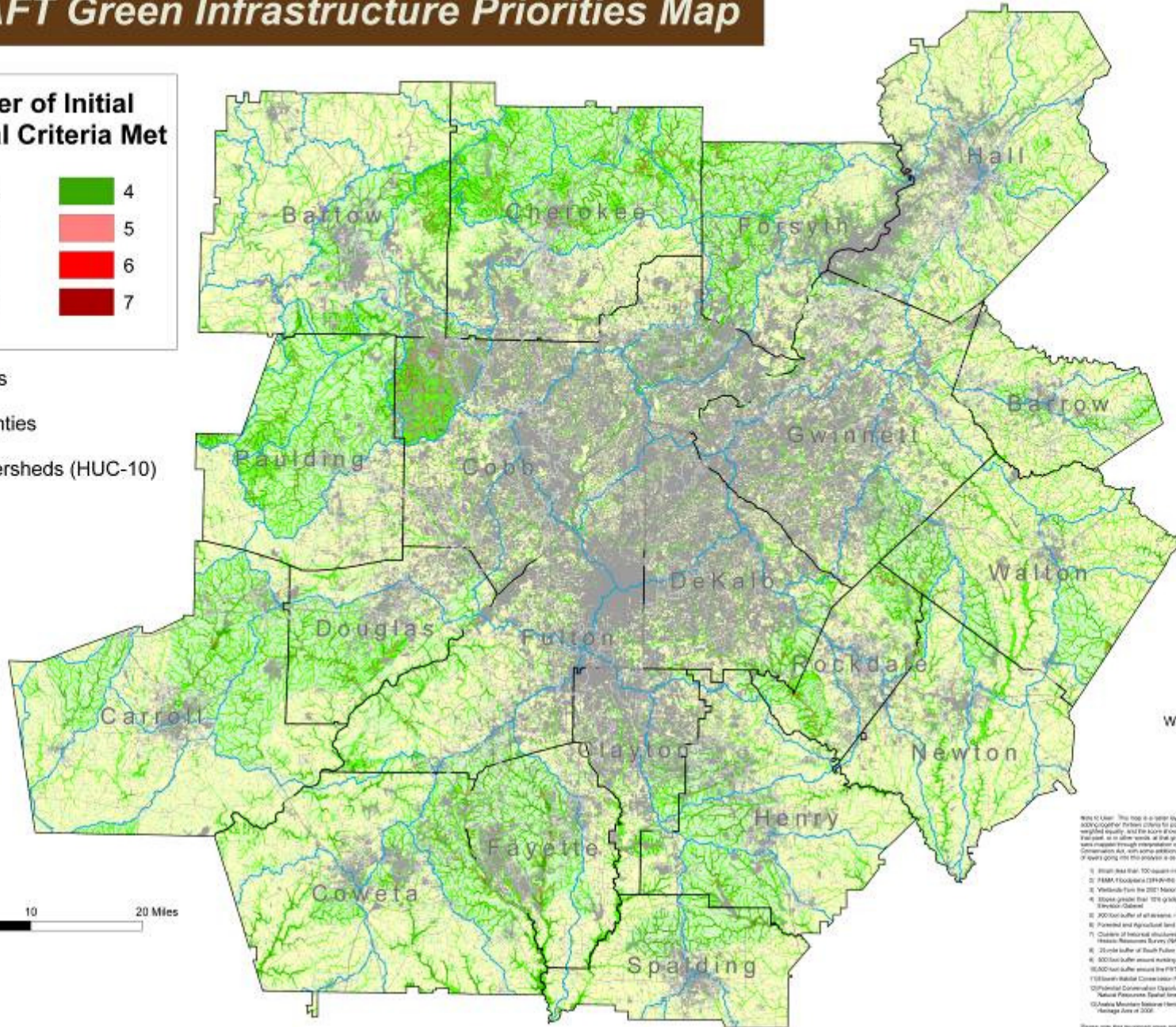
Copyright © 2006 - Atlanta Regional Commission (ARC)

Drag Map



DRAFT Green Infrastructure Priorities Map

Number of Initial Regional Criteria Met



- Note to User: This map is a raster layer representing the composite geographic data from the following sources for each geographic area. Each criteria was weighted equally, and the score shown is simply the number of criteria that are fulfilled, as in other words, all are given equal weight on the ground. The colors were generated through interpolation of the data represented by the Georgia Land Conservation Act, with some additional layers added in to the analysis. The list of layers used for this analysis is as follows:
1. 500-foot buffer, 100-meters inland drinking water supply watershed
 2. FEMA Floodplains (2016)
 3. Watershed from the 2011 National Land Cover Database (NLCD)
 4. Slope grade from 12.5 grade derived from the USGS National Elevation Dataset
 5. 300-foot buffer of all airports, rivers, lakes, and ponds over 10 acres
 6. Forested and Agricultural land cover classes from the 2011 NLCD
 7. Clusters of historical structures derived from the National Register and Historic Resources Survey (NHRIS)
 8. 25-mile buffer of South Fulton State Bayou
 9. 500-foot buffer around existing Green-space programs larger than ten acres
 10. 500-foot buffer around the FWS and Silver Comet Bluebird Sanctuaries
 11. USGS Wetland Classification-Plan priority areas 1 and 2
 12. Potential Concentration Opportunity Areas from SA DNR and the USA National Resources Spatial Analysis Laboratory
 13. Ocala Mountain National Heritage Area as designated by The National Heritage Area Act of 2008

Please note that geographic areas are listed in order of their importance to the GSA. No criteria were "weighted" or given priority, and the score shown is the total number of criteria met for each area.

Regionally Important Resources



RDCs under new Georgia Department of Community Affairs (DCA) rules must:

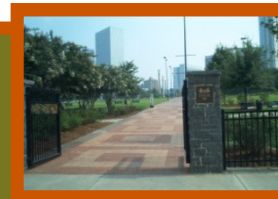
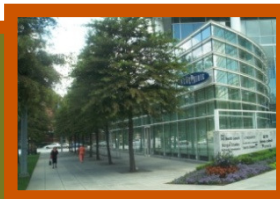
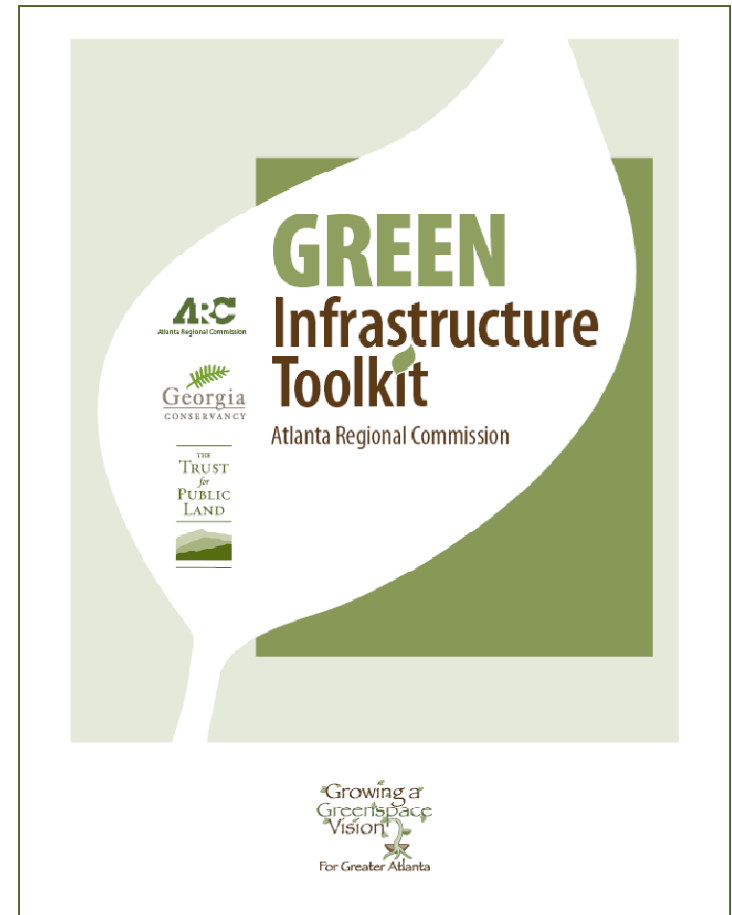
- **Prepare a Regional Resource Plan that includes:**
 - **Regionally Important Resource Map**
 - **Guidance for Appropriate Development Practices**
 - **General Policies and Protection Measures**
- **RDC must seek nominations for important natural and cultural resources for consideration on RIR map**
- **All RIRs are automatically considered in the Regional Plan**



Green Infrastructure Toolkit



Presents a set of tools and mechanisms available to local governments in Georgia that can be used to acquire and preserve greenspace



Green Communities



The ARC Green Communities Program is designed to encourage local governments to take environmental leadership.

The goals of the program are:

- Promote measures that encourage local governments to work towards reducing the environmental impact of the government through its buildings, fleets and practices**
- Promote measures that assist local governments in encouraging their community to reduce its environmental impact**
- Provide assistance in public education and outreach on sustainability**



Certification Categories



- **Green Building**
- **Energy Efficiency**
- **Green Power**
- **Water Efficiency**
- **Tree Planting & Greenspace**
- **Transportation & Air Quality**
- **Recycling & Waste Reduction**
- **Land Use**
- **Education & Outreach**
- **Innovation**



Green Communities



- Visit the Atlanta Regional Commission at www.atlantaregional.com/greengcommunities.
- Download the application, checklist and manual.
- Submit completed Green Communities Checklist with supporting documentation.



Pop Quiz



1. Porcupines float
2. Bats always exit left from a cave
3. All platinum in the world would fit in a living room
4. Apartments waste more energy than homes







Pop Quiz



1. They are feeding themselves
2. They are supporting a healthy lifestyle
3. They are keeping dollars in Georgia
4. People who dig in dirt look suspicious



Resources



Georgia Organics (www.georgiaorganics.org) is a non-profit organization that is reaching out to local governments statewide to partner on many issues related to urban gardens, farmers markets and support for organic farming.

The National Association of Counties has also released a guide:<http://danedocs.countyofdane.com/webdocs/pdf/foodcouncil/localFoodSystems.pdf>

TLW services include: growing fresh produce, seminars, educational tours, land and garden consultation, etc. More information is available at: www.trulylivingwell.com



Case Studies



The City of Decatur is working on a master plan for a large city garden as well as a Farm to School program.

The Oakhurst Community Garden in Decatur has become a resource to a larger community (see link: <http://www.oakhurstgarden.org/>)

The City of Suwanee is also hard at work on a community garden (see link: <http://www.suwanee.com/communitygarden.php>)





**Dan Reuter, AICP
Land Use Chief
Atlanta Regional Commission
404-463-3305**

www.atlantaregional.com

