



  
PEACHTREE CITY  
PLAN TO STAY™

**EXPERIENCE LIFE  
AT 15 MPH...**





## An overview of Peachtree City's multi-use path system

David E Rast, ASLA – Community Development Director

# The city's “village concept”

The city was planned to be developed into villages, each with its own village retail center, office and commercial space, recreational facilities and elementary schools, all of which were interconnected by open space and a network of multi-use paths.

The city contains the following villages:

Aberdeen Village (1960' s)

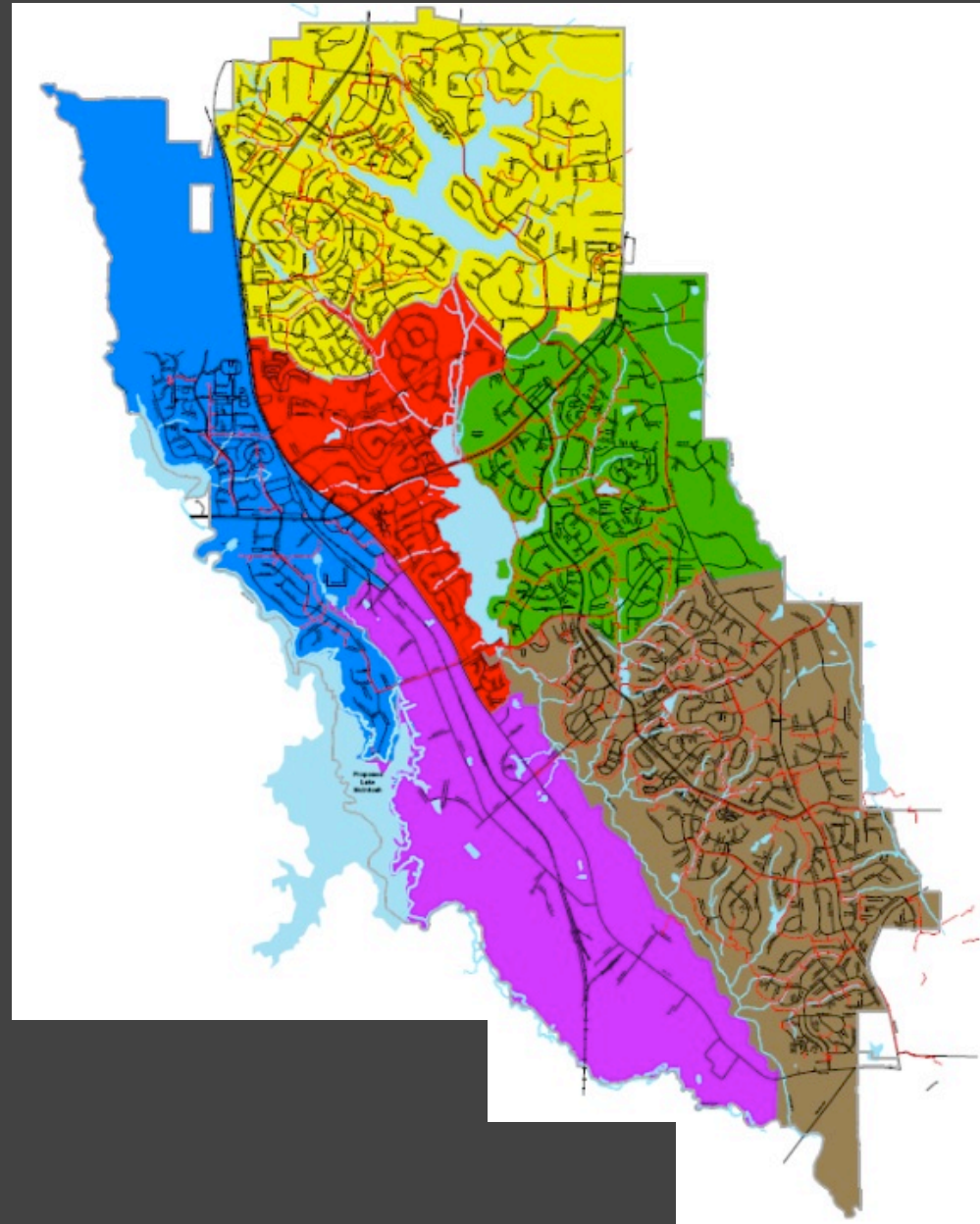
Glenloch Village (1970' s)

Braelinn Village (1980' s)

Kedron Village (1990' s)

Wilksmoor Village (2000 - present)

Industrial Park





# The city's multi-use path system

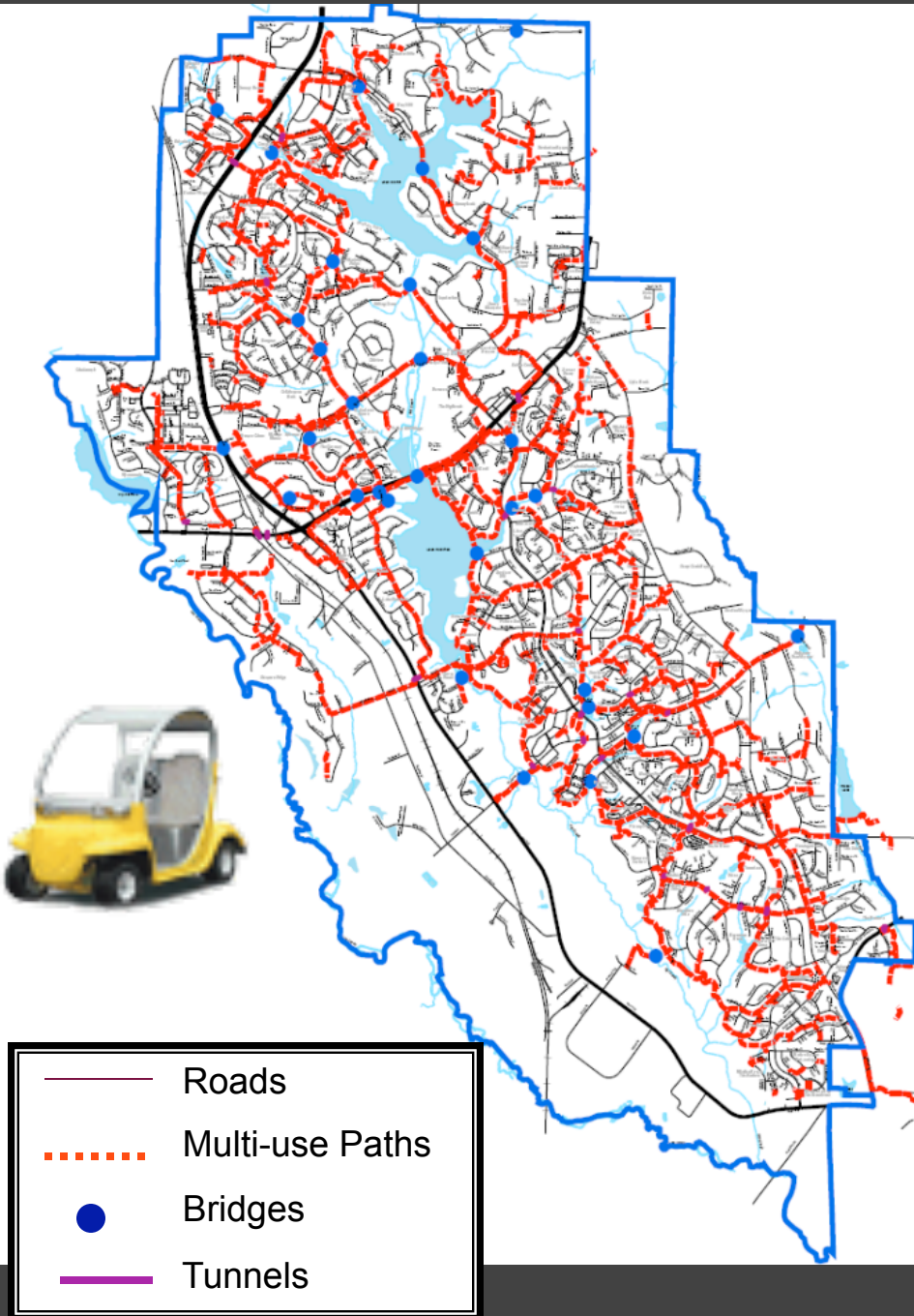
- Most areas of the city are interconnected by the multi-use path system via bridges over state highways and tunnels underneath major roads
- Each new development is required to interconnect with the existing path system





# Alternate transportation

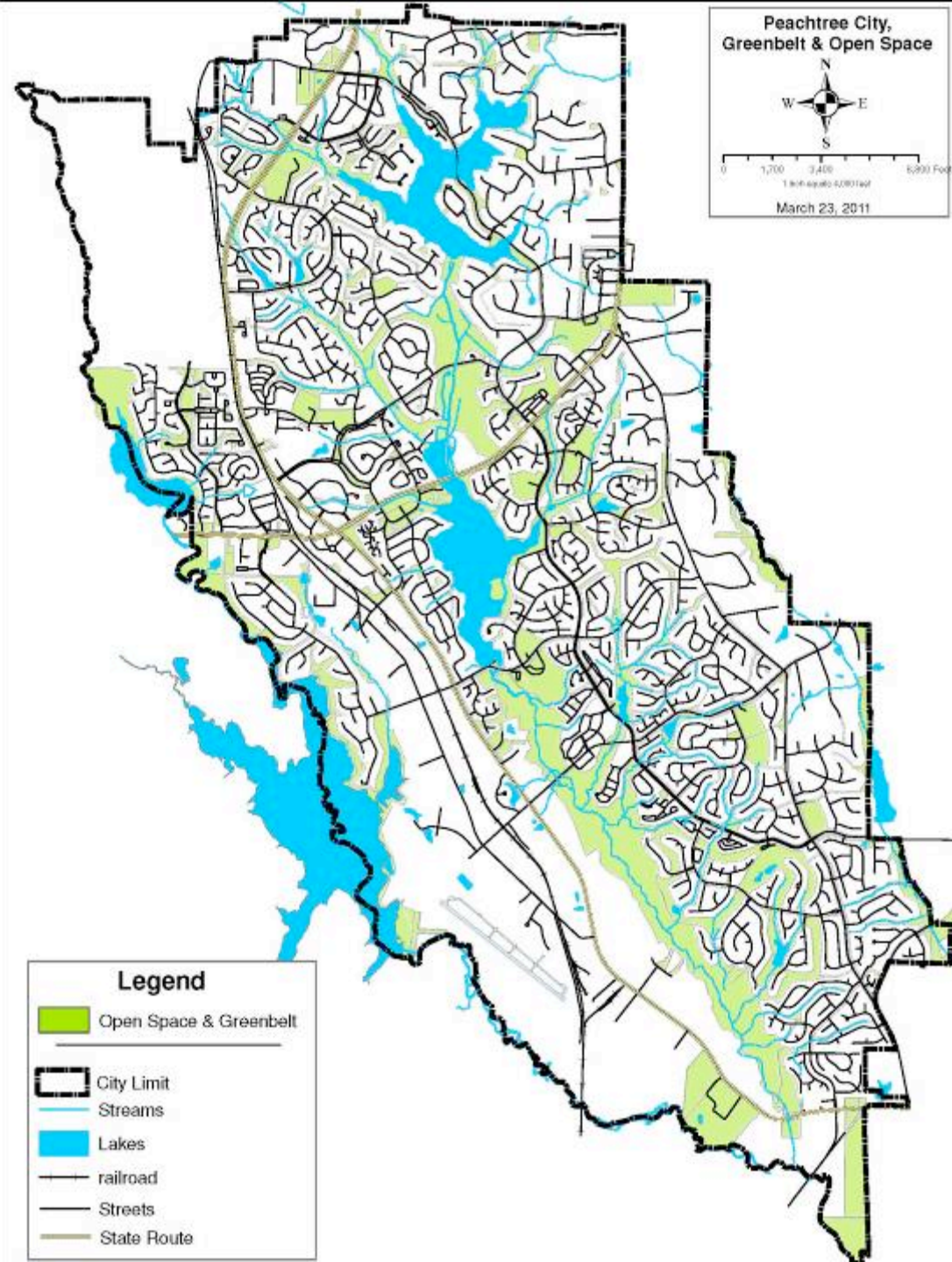
- The current multi-use path system extends 93.89 miles.
- Total of 32 multi-use bridges spanning state highways, CSX rail line, lakes and creeks.
- 3 proposed multi-use bridges in master plan.
- 27 multi-use tunnels throughout city providing connectivity under state highways, major and minor collectors as well as residential streets.
- Each development required to provide interconnection to existing path system.
- 14,230 residential units in Peachtree City.
- Approximately 9,808 registered golf carts.





# Open space

The city owns or has control over **3,755 acres** of dedicated open space throughout the city. Path connections, passive parks as well as active recreational facilities are located within these areas.







**CITY OF PEACHTREE CITY**

**50 years of experience...**

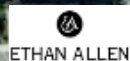




**McIntosh Village Shopping Ctr**



**Marketplace Shopping Ctr**



**Westpark Walk**

Hwy 74

Hwy 54 W

Hwy 74

Hwy 54 W

Hwy 54 W

Planterria Ridge

Huddleston Rd

CSX Railroad

**The Tennis Center**



**Fayette Rental**



**LEGEND**

- |  |               |  |         |
|--|---------------|--|---------|
|  | Existing Path |  | Tunnels |
|  | New Path      |  | Bridges |

**SR 54 W/ CSX multi-use path connections**





**CITY OF PEACHTREE CITY**

**SR 54 W/ CSX multi-use path connections**





**CITY OF PEACHTREE CITY**

**SR 54 W CSX multi-use path connections**





## **Flat Creek multi-use bridge path connections**

**Morallion Hills to Gardner Park**





Peachtree City,  
Georgia

N  
W E  
S

0 160 320 640 Feet

1 inch equals 400 feet

**Cedarcroft**

**Aberdeen  
Corners S/C**

**Walmart &  
Home Depot**

**Camden  
Apartments**

**McIntosh Village S/C**

**Market Place  
S/C**

**MacDuff**





Home Depot

Merrick Dr

**Camden  
Apartments**

Merrick Dr

enview Dr

gs Ct

McIntosh Village S/C

Hwy 54

MacDuff





CITY OF PEACHTREE CITY

Multi-use bridge & gateway



CITY OF PEACHTREE CITY

SR 54 W multi-use bridge and gateway feature



# Funding options

- Livable Centers Initiative
- Department of Natural Resources
- Transportation Enhancement
- SPLOST
- Local
- Safe Routes to School
- Developer-funded
- Impact fees

# Rules of the path

- Shared use
- Registration
- Accidents
- Path markers
- Notification
- Speed limit
- LSMV/ segways/ motorized carts