



How the customer explained it



How the Project Leader understood it



How the Analyst designed it



How the Programmer wrote it



How the Business Consultant described it



How the project was documented



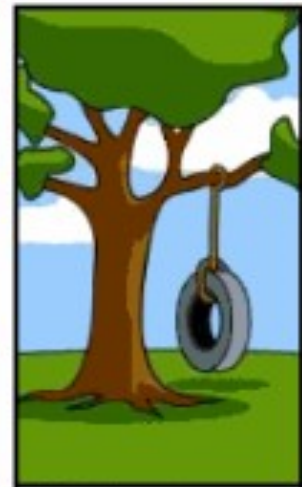
What operations installed



How the customer was billed



How it was supported



What the customer really needed

## Multi-use path engineering

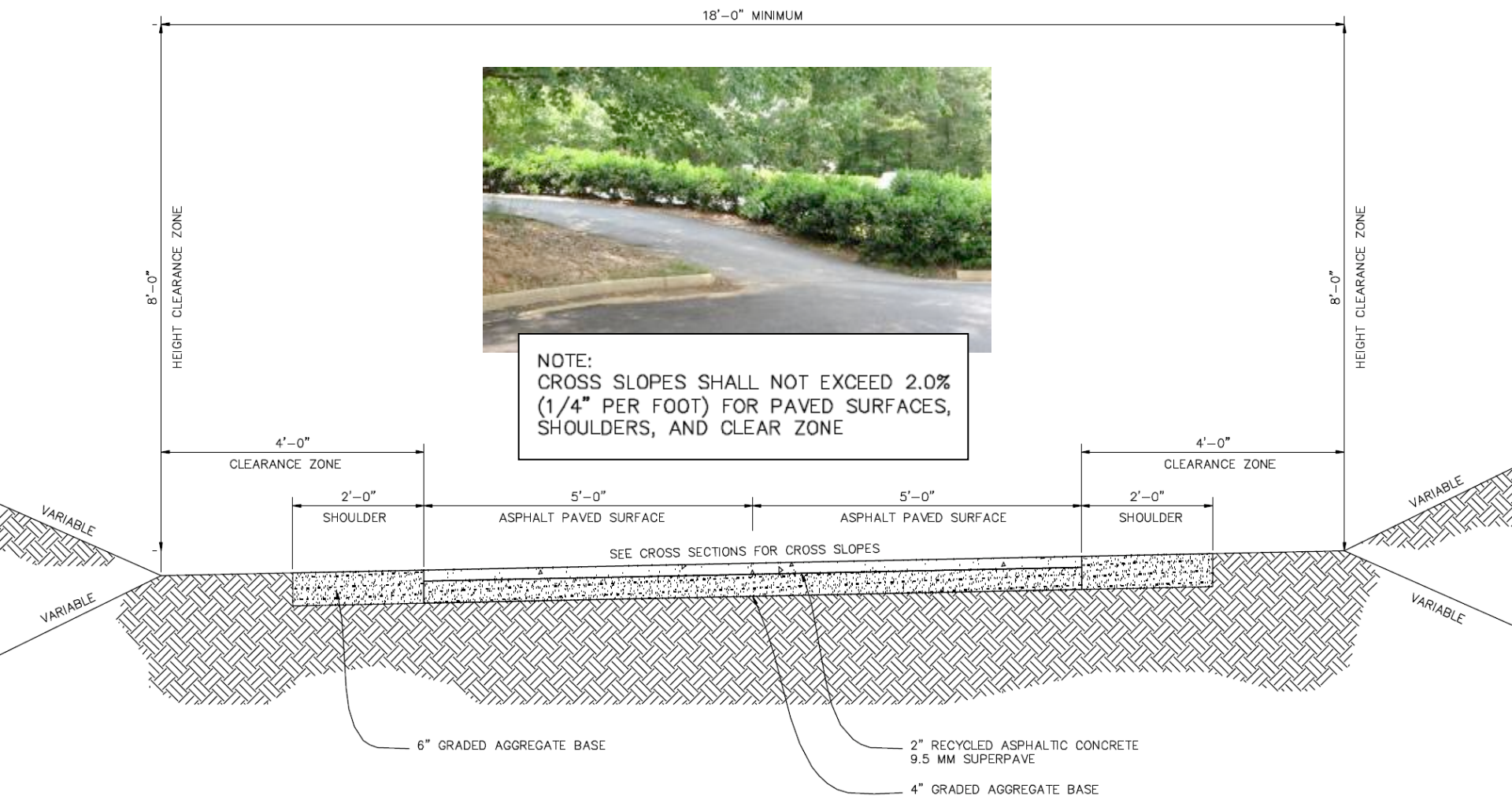
Dave Borkowski, P.E., M.ASCE – City Engineer





**CITY OF PEACHTREE CITY**

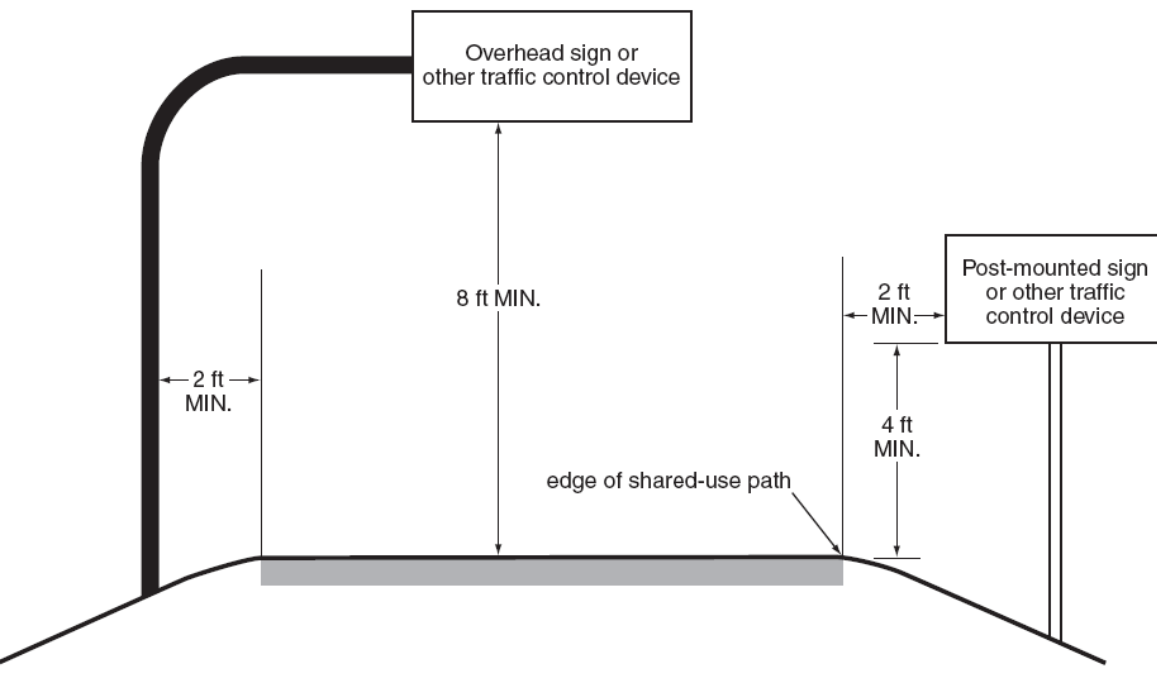
**Multi-Use paths and facilities**



**Typical multi-use path section**

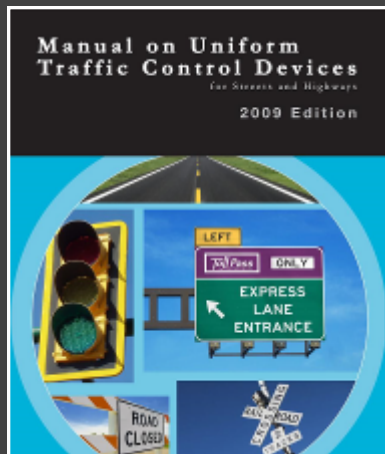


**Figure 9B-1. Sign Placement on Shared-Use Paths**



**NOTE:**

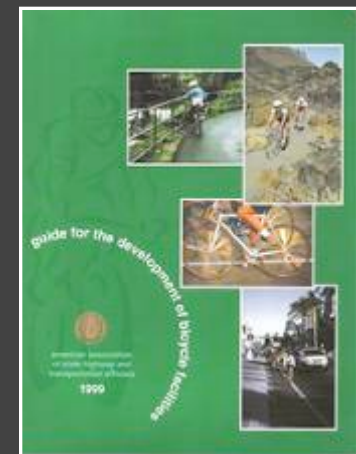
1. PATH SHOULD BE DESIGNED TO AASHTO GUIDE FOR DEVELOPMENT OF BICYCLE FACILITIES (LATEST EDITION).
2. GRADE AREAS OUTSIDE OF CLEARANCE ZONE AS NEEDED FOR PROPER DRAINAGE.
3. LONGITUDINAL SLOPE SHOULD MEET ADA STANDARDS.
4. PATHS SHOULD BE SIGNED ACCORDING TO MUTCD (LATEST EDITION).



**MUTCD**



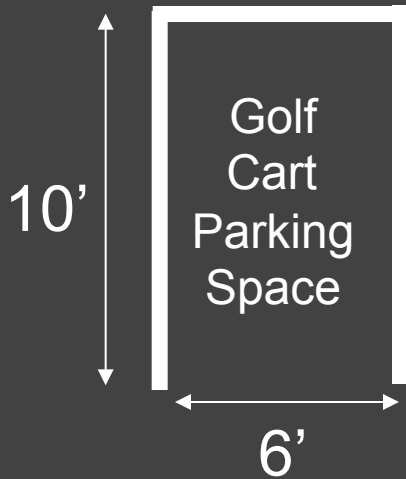
**ADA**



**AASHTO**

**Sign placement on multi-use path**





High School parking lot

## Golf cart parking





**Completed path projects**





## **Flat Creek multi-use bridge path connections**

**Crossing creeks and wetlands**





**SR 54 W/ CSX multi-use bridge path connections**

**Getting across State Highway 54 and CSX RR**





## **Paschall tunnel multi-use path connections**

**Getting across State Highway 74 and up to the Post Office**





Even though golf carts are slower than cars... it does not make them safer.

## Obstacles & Accidents





When bad weight distribution happens to good people.



Guess we should have put a barrier there.

## Obstacles & Accidents



User error or a very strong wind. You decide.



The blindfold dare was a BAD idea.

## Obstacles & Accidents





Just because it has a roof, does NOT mean it has roll over protection.



This driver truly couldn't see the forest through the trees.

## Obstacles & Accidents



Potholes work on golf carts too.



Never let that one friend borrow your golf cart. You know who yours is.

## Obstacles & Accidents





Do not let golf carts travel on the road – this is what a Dodge Ram can do at 40 mph.



Yes, you can get a DUI on a golf cart.

## Obstacles & Accidents



Yes, those are spinners on the wheels. Yes, there should be wheel stops for carts too.



Golf carts should not exceed 25 mph... excessive speed is dangerous.

## Obstacles & Accidents



# You should design your paths for everyone... but there is a limit.



Golf carts are not 4x4s...



But they can be.

## Modified Carts

# What's allowed and not allowed on the path?

## ALLOWED

- Pedestrians
- Non-motorized vehicles
- Roller skates, skateboards
- Registered Golf Carts
- Registered low speed motor vehicles (LSMV's)
- Authorized/Emergency vehicles
- Bicycles
- Wheelchairs
- Electric Personal assistive mobility devices (EPAMDs)
- Segways

## PROHIBITED

- Automobiles & trucks
- Motorcycles & mopeds
- Horses
- Go-carts
- Unregistered golf carts
- Electric or motorized scooters
- ATVs, etc – any vehicle designed to go faster than 20 mph.

**Allowed Uses**





**Convertible Hummer**



**Buick Lucerne**



**Porsche Cayenne**



**Chevy Pickup**

## **Modified Carts**

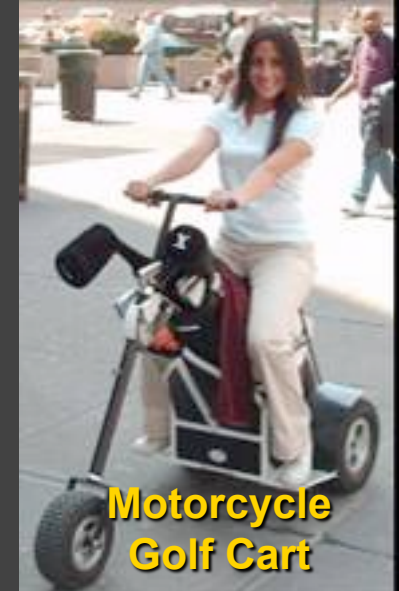




**Segway Puma**



**Armored Golf Cart**



**Motorcycle  
Golf Cart**



**Portable Sound Golf Cart**



**1957 Chevy**

## Unusual Carts





Yes. Even the Batmobile is subject to Peachtree City path rules.

The "Tumbler" from Batman Begins movie



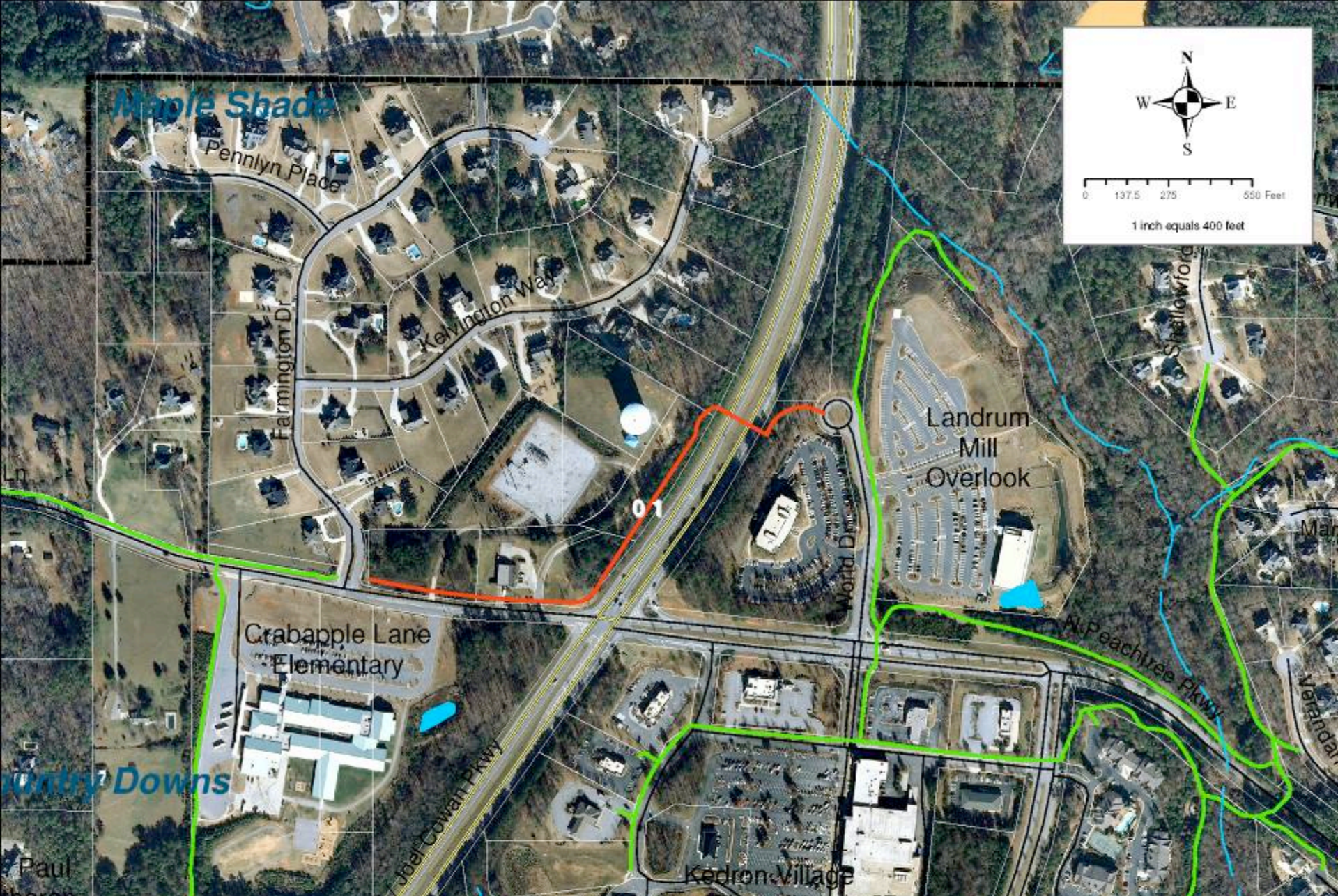
## Unusual Carts





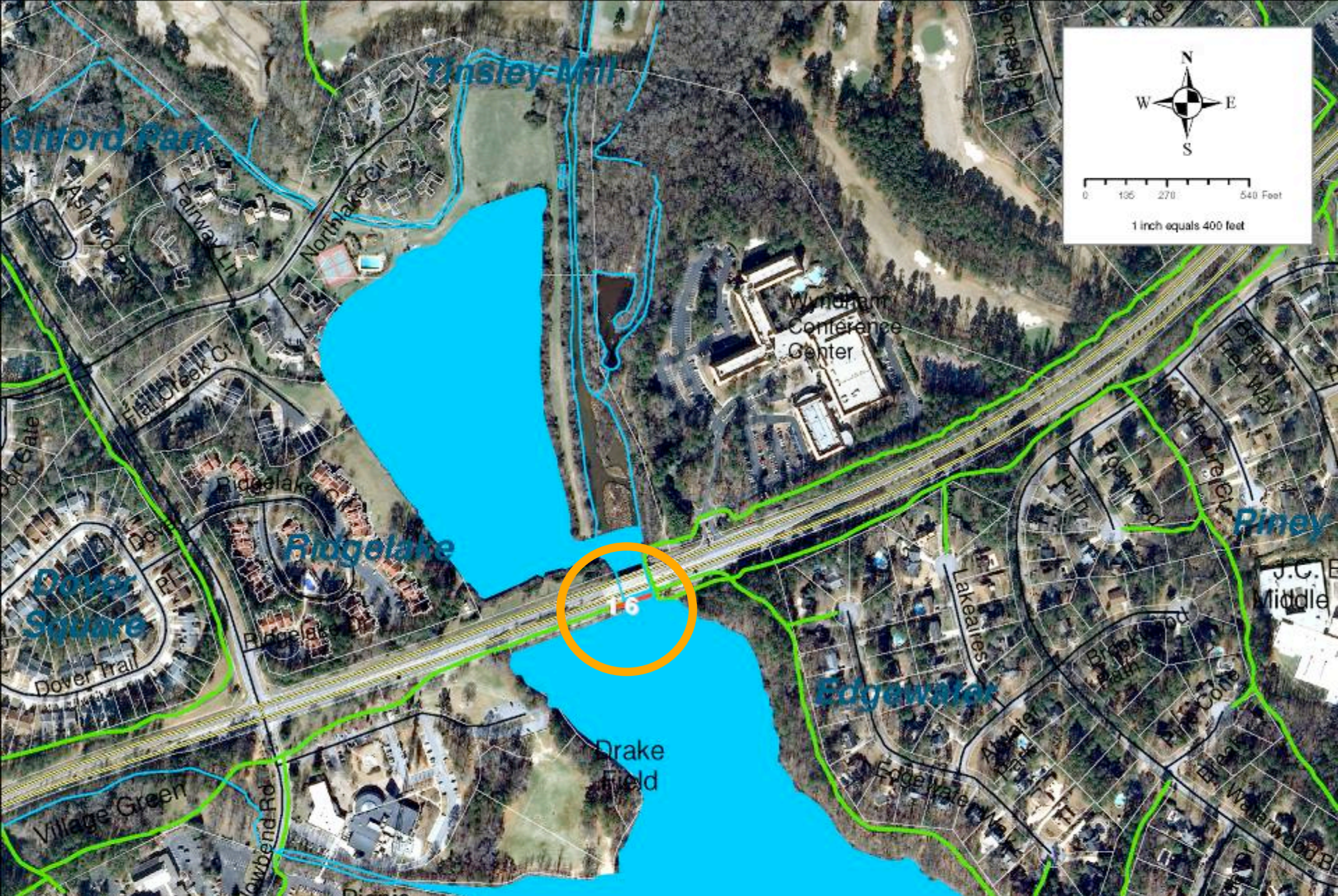
## Future Design Challenges





**SR 74 N multi-use bridge & path connections**  
**Crossing State Highways**





**SR 54 E/Lake Peachtree multi-use bridge replacement**  
Replacing aging facilities





**Widen Bridge to 14'**

## **SR 54 E/Lake Peachtree multi-use bridge replacement**

**Replacing aging facilities**

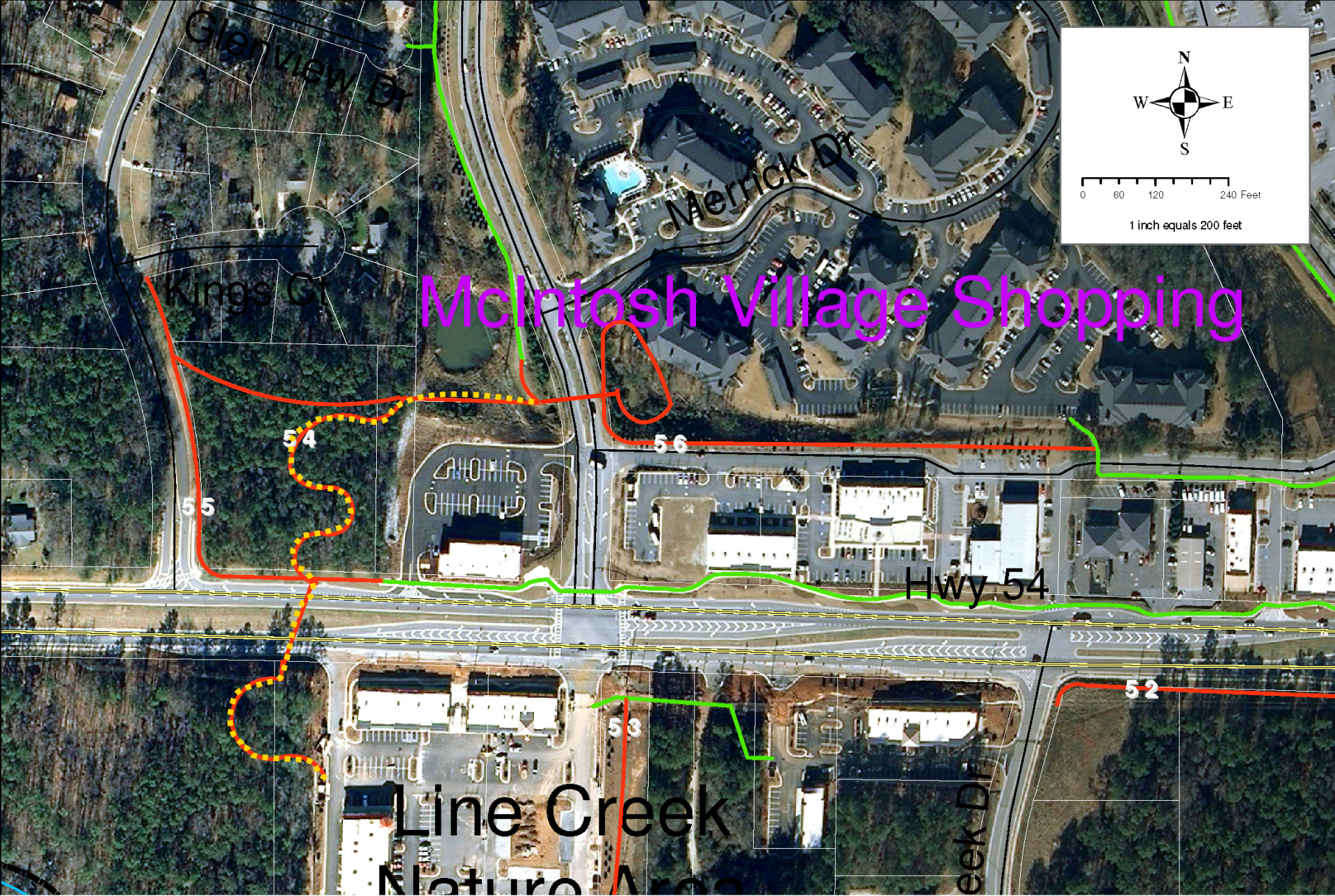




## Flat Creek Nature Area (FAA Connection)

Using sewer easements to relieve rush hour traffic

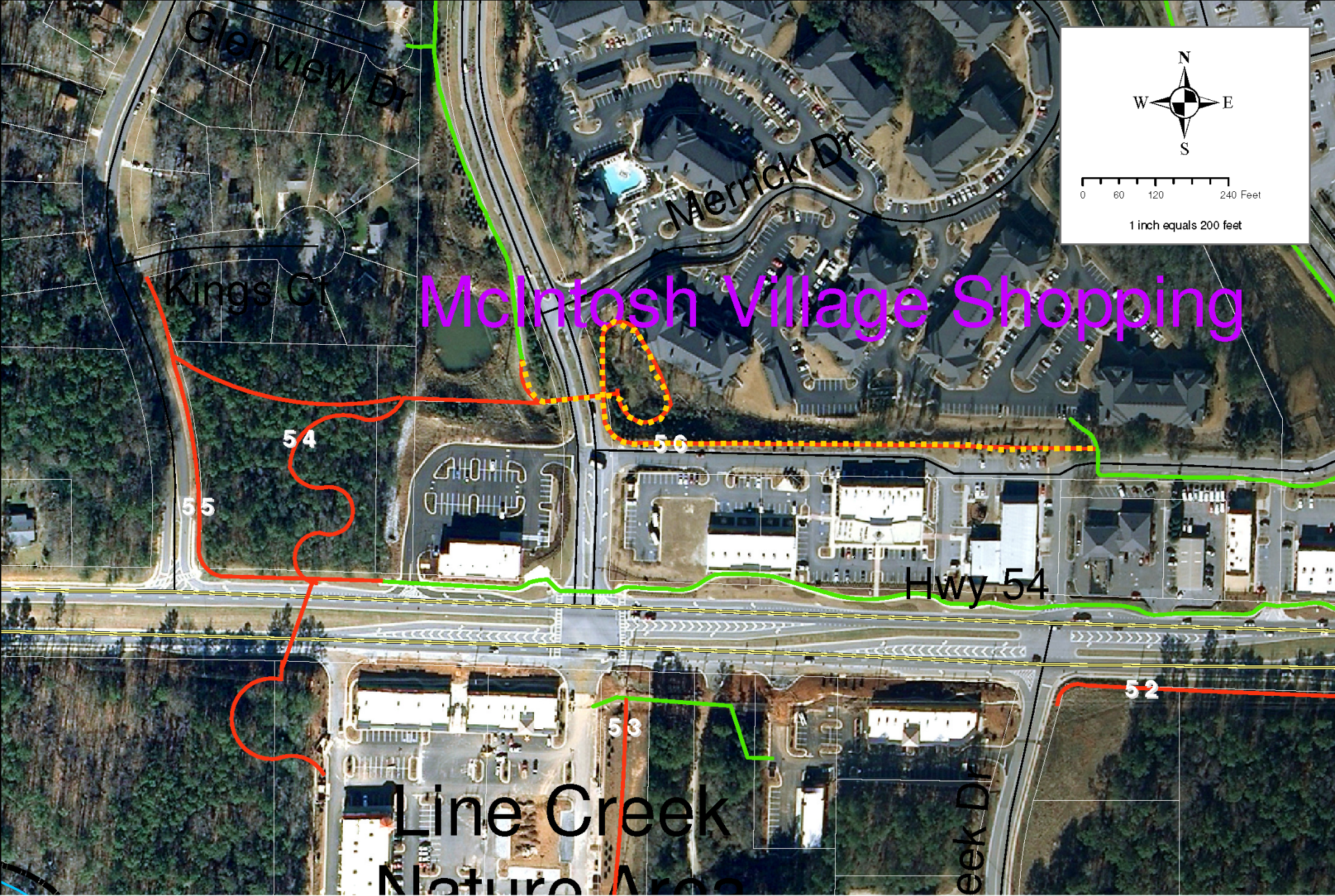




**SR 54 W multi-use bridge and gateway feature**

**Elevated approaches to bridge**

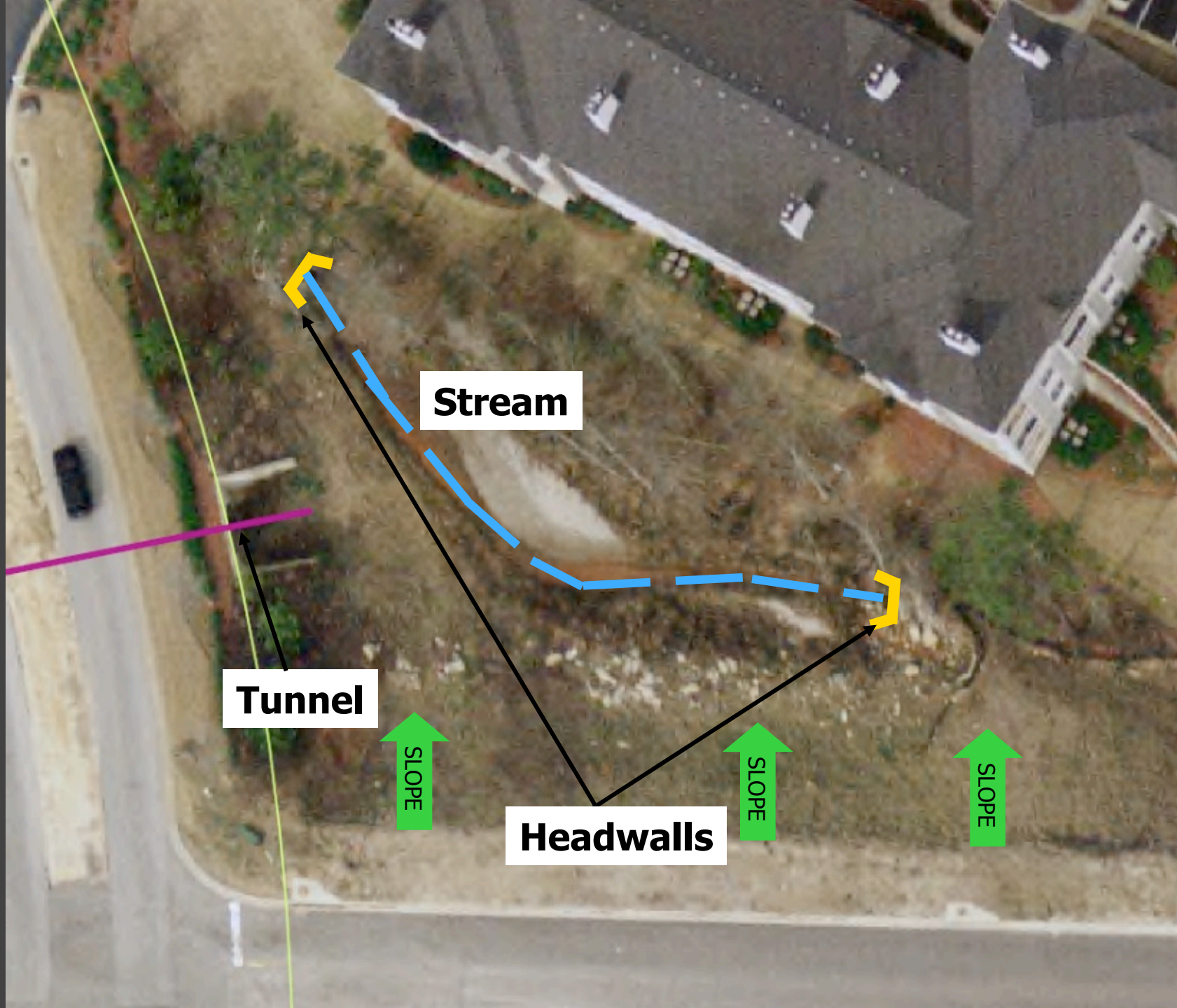




## MacDuff Pkwy multi-use path connections

Installing path connections after land is developed





**Stream**

**Tunnel**

**Headwalls**







## MacDuff Pkwy extension

Developer to install path





**David E. Rast, ASLA**  
**Community Development Director**  
**City Planner**  
**City Landscape Architect**  
**Zoning Administrator**

[planner@peachtree-city.org](mailto:planner@peachtree-city.org)

**Tony Bernard, LEED AP**  
**Planning Coordinator**

[tbernard@peachtree-city.org](mailto:tbernard@peachtree-city.org)

**Dave Borkowski, P.E., M.ASCE**  
**City Engineer**

[dborkowski@peachtree-city.org](mailto:dborkowski@peachtree-city.org)