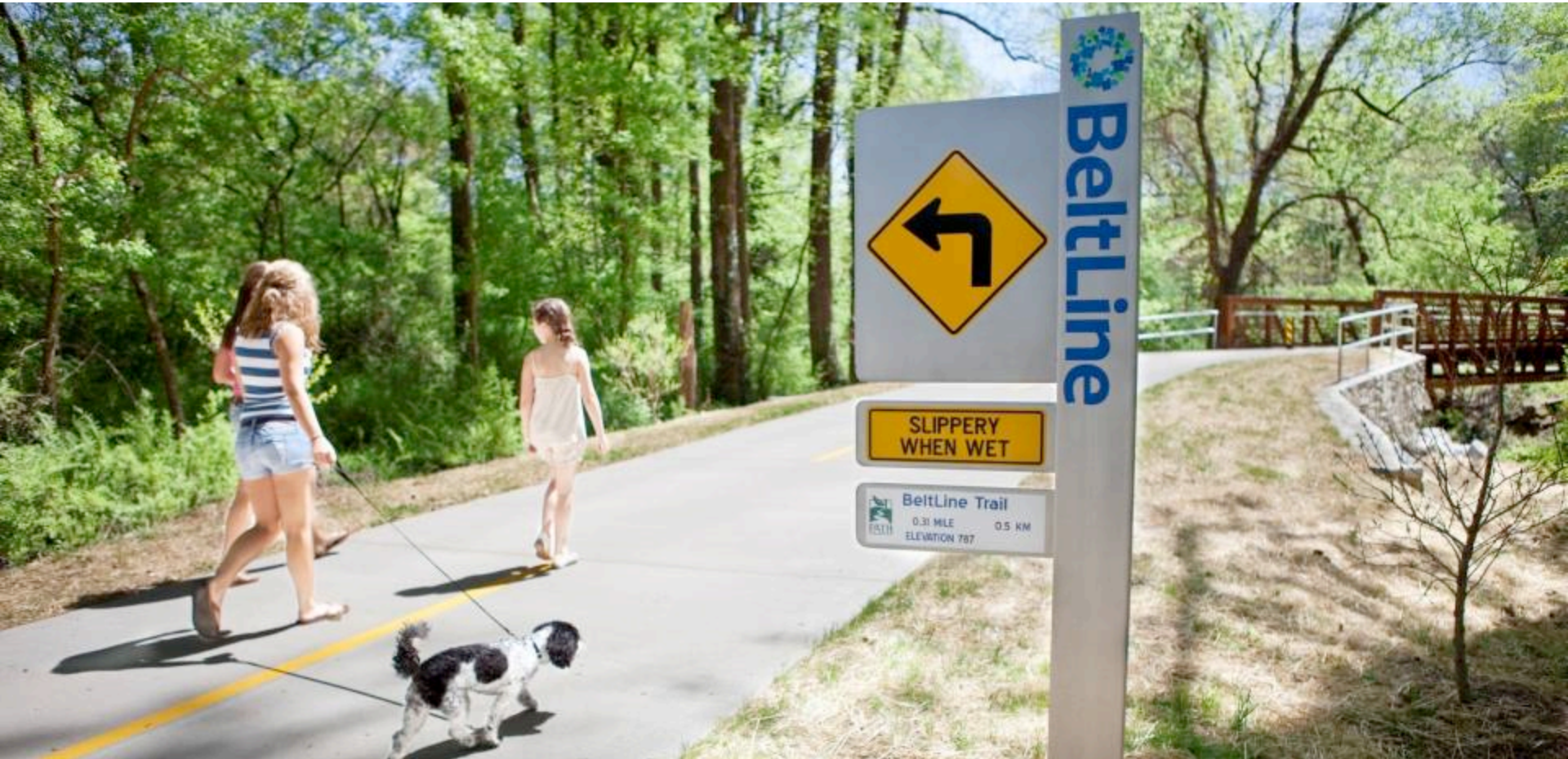


Social Media and the Atlanta BeltLine



Northside BeltLine Trail, completed April 2010

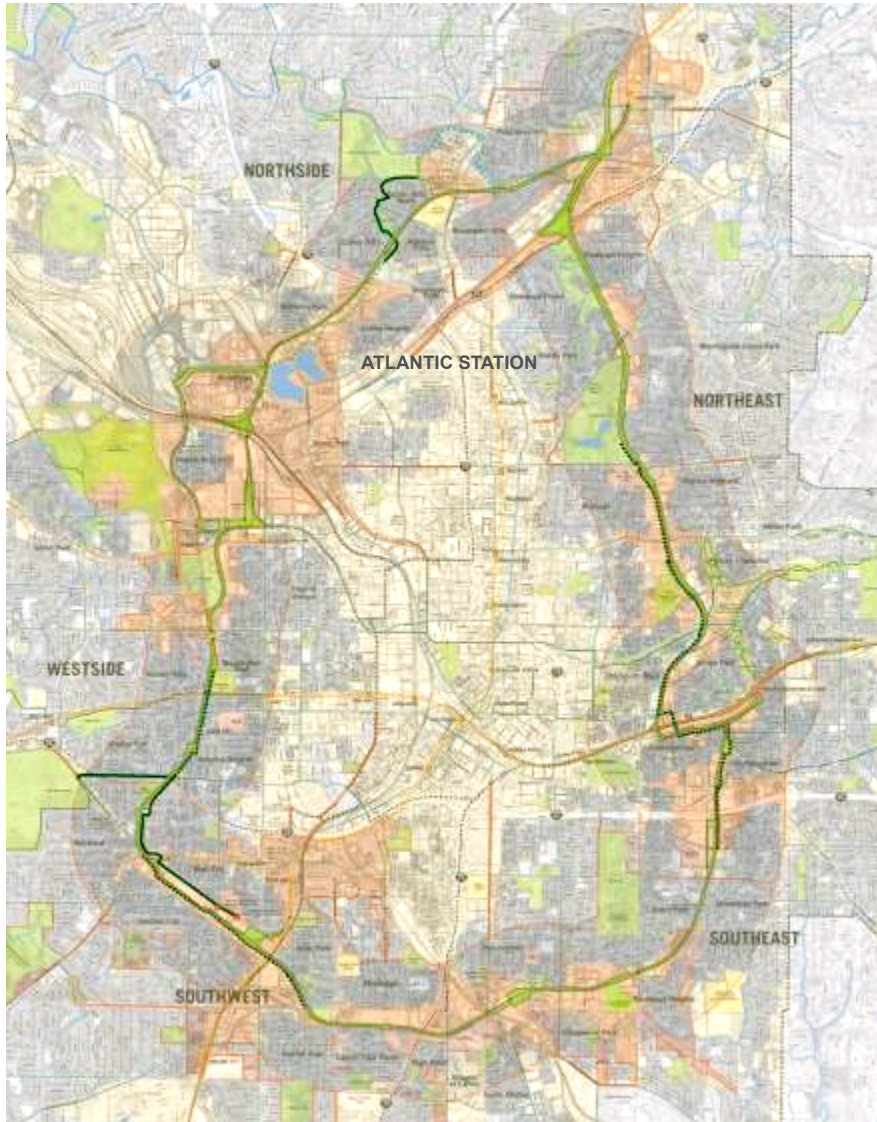
WHAT IS THE ATLANTA BELTLINE?



The BeltLine is in the heart of the Atlanta region & utilizes historic freight rail ROW circling the City.



WHERE IS THE ATLANTA BELTLINE?



- Connects **45 neighborhoods**
- **6,500 acre** redevelopment area
- **22% of City of Atlanta population** lives in the BeltLine planning area
- **8% of the City's land mass** is inside the BeltLine TAD
- **40% increase** in Atlanta's parkland

WHAT IS THE ATLANTA BELTLINE?

Key Elements



Transit
22-mile loop



Parks
1300 + new acres



Trails
33 miles



Jobs & Economic Development
20 areas, 30k jobs



Affordable & Workforce Housing
5,000 Units



Existing Communities & Historic Preservation



Public Art & Streetscapes



Environmental Clean-up
1100 + acres



BELTLINE CORRIDOR

Development Process



Transit Implementation

- Integrated into public realm
- With sufficient funding, construction can begin within 3-5 years of acquiring corridor
- Supports new private development investments



COMMUNITY ENGAGEMENT FRAMEWORK



Comprehensive engagement efforts continue including:

Quarterly City-wide Briefings and BeltLine Study Groups

BeltLine TAD Advisory Committee and Affordable Housing
Advisory Board

Community Representative on ABI Board of Directors

Community Engagement Staff

Website and Social Media



facebook

Email

Password

Login

☐ Keep me logged in

[Forgot your password?](#)

Sign Up

Facebook helps you connect and share with the people in your life.



Wall

Info

Events

Peak Democracy

YouTube

Flickr

Photos (33)

Video

More ▾

About

The Official source for Atlanta BeltLine information. Web: <http://beltline....>

More

6,299

people like this

Likes

[See All](#)

Atlanta BeltLine - Official Fan Page

 Like

Non-Profit Organization · Atlanta, Georgia



Wall

Atlanta BeltLine - Offici... · [Top Posts ▾](#)



Atlanta BeltLine - Official Fan Page



BeltLine Bike Tour 2011

www.flickr.com

thank you, Cameron Adams!



Yesterday at 5:21am · [Like](#) · [Comment](#)



Kay Saunders, David Ray, Chris Good and 4 others like this.



Georgia Neal Hall Have you considered a longboard/bike event?

Longboarding is the fastest growing alternative transportation.

Yesterday at 8:21am



Mark Cohen

Please update your website with clear TRAILS information--there are several links and maps in different areas of the site, but none clearly articulate: 1) where the trails are, 2) where the entrances and exits are, 3) where to park, 4) details





Have an account? [Sign in](#)



Atlanta BeltLine

@AtlantaBeltLine Atlanta, GA

One of the largest, most comprehensive urban redevelopment projects underway in the United States
<http://www.beltline.org>

[+ Follow](#)

[Text follow AtlantaBeltLine to 40404 in the United States](#)

Timeline

Favorites

Following

Followers

Lists



GKCRE Gene Kansas

Congrats to @perkinswill_ATL, named #1 by @architectmag.
<http://www.architectmagazine.com/architects/the-architect-50.aspx>
 23 hours ago



AtlantaBeltLine Atlanta BeltLine

@elizabeth_cw So glad you saw people out on the #AtlantaBeltLine Bike Tours! We hope you can make it next time!
 9 May



AtlantaBeltLine Atlanta BeltLine

BeltLine Bike Tour 2011 <http://fb.me/VV7QPRff>
 9 May

Atlanta BeltLine is on Twitter

Don't miss any updates from Atlanta BeltLine. Get your account on Twitter today to stay up-to-date on what interests you!

[Sign up »](#)



About @AtlantaBeltLine

543

Tweets

98

Following

2,834

Followers

160

Listed

Following 98



[About](#)

[Help](#)

[Blog](#)

[Mobile](#)

[Status](#)

[Jobs](#)

[Terms](#)





[Browse](#) | [Movies](#) | [Upload](#)

[Create Account](#) | [Sign In](#)



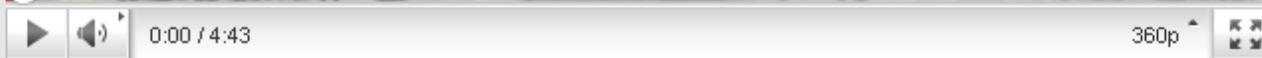
Official Atlanta BeltLine Ch.
beltlineatl's Channel

[Subscribe](#)

[All](#)

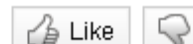
[Uploads](#)

[Playlists](#)



[Info](#) [Favorite](#) [Share](#) [Playlists](#) [Flag](#)

Beltline Fourth Ward Park Progress -



Uploads (112)



The Atlanta BeltLine Partnership

216 views - 3 weeks ago



WGCL: Employing Goats to clear Kudzu

190 views - 6 months ago



Valarie Wilson, Atlanta Beltline

215 views - 6 months ago

[see all](#)

TRANSIT: Environmental Opti... (8)



BeltLine Pedestrian and Auto

beltlineatl - 385 views




BeltLine Passenger Boarding

beltlineatl - 270 views



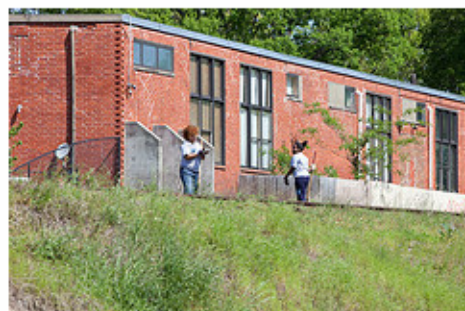
beltlinegroup's photostream pro

[Collections](#) [Sets](#) [Galleries](#) [Tags](#) [People](#) [Map](#) [Archives](#) [Favorites](#) [Profile](#) [✉](#)

Slideshow 



More ▾



Earthday2011_41611_251

www.flickr.com/photos/organize/

 © All rights reserved

Uploaded on [May 2, 2011](#)

[0 comments](#)



Earthday2011_41611_250

 © All rights reserved

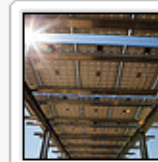
Uploaded on [May 2, 2011](#)

[0 comments](#)



[Earth Day on the Atlanta BeltLine](#)

446 photos
859 views



[Atlanta BeltLine Parks](#)

159 photos
2,279 views



[Atlanta BeltLine Volunteer](#)

67 photos
2,564 views



[Atlanta BeltLine East Side](#)

135 photos
5,214 views

[Get Involved](#)[Implementation](#)[News](#)[Photos](#)[Videos](#)[Resource Library](#)[Affordable Housing](#)[For Developers](#)[Jobs/RFPs/RFQs](#)[Support the BeltLine](#)[BeltLine Shopping](#)

Get email Updates!

Enter your email address and zip code to receive BeltLine updates.

*Email

*Zip

* = Required Field

[Sign Up](#)

Entities

ATLANTA

Planning,
implementing

Give us your input

[Implementation](#) | [Transit and Trails](#) | [Atlanta BeltLine Public Forum](#)

Atlanta BeltLine Transit Implementation Forum

[Home](#)[Sign In](#) [Help](#)

The Atlanta BeltLine Transit Implementation Forum is an on-line forum for civic engagement. Read what others are saying about important Atlanta Beltline Transit Implementation topics, then post your own statement. Atlanta BeltLine and City officials will read the statements and incorporate them into their decision process.

When you post your first statement, you will be asked for your name and home address. This confidential information is only used...

[READ MORE](#)

TIA Segments

Which Atlanta BeltLine transit segments should the City submit to the State for potential Transportation Investment Act (TIA) funding?

Introduction

Atlanta BeltLine, Inc. (ABI) is developing a Transit Implementation Strategy including on-street segments connecting the Atlanta BeltLine corridor to activity...

[READ MORE](#)

- Photos
- Videos
- Resource Library
- Affordable Housing
- For Developers
- Jobs/RFPs/RFQs
- Support the BeltLine
- BeltLine Shopping

Get email Updates!

Enter your email address and zip code to receive BeltLine updates.

*Email

*Zip

* = Required Field

[Sign Up](#)

Entities

**ATLANTA
BELTLINE
INC.**

Planning,
implementing
and building the
BeltLine

Reaching out to

Atlanta BeltLine Transit Implementation Forum



Home

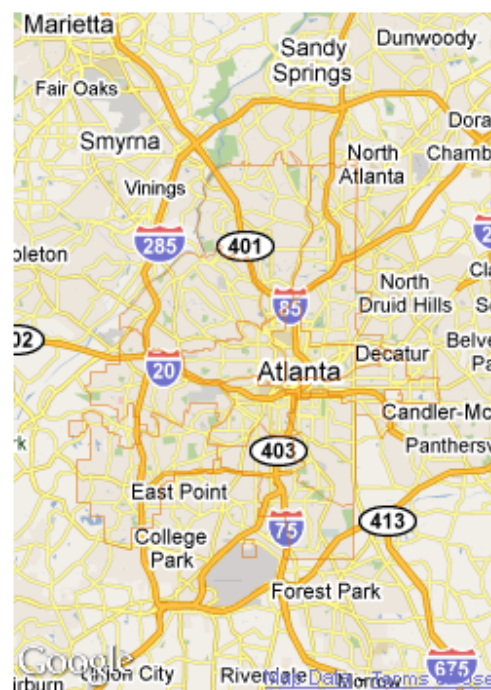
[Sign In](#) [Help](#)

[Overview >](#)

Which Atlanta BeltLine transit segments should the City submit to the State for potential Transportation Investment Act (TIA) funding?

Around Atlanta

Click map or menu to select region



This forum has

[Download statements](#)

- 338 [Attendees](#)
- 27 [Participants](#)
- 1.4 [Hours of Public Comment](#)

Around Atlanta, 27 people write this:

Edward Rease outside Atlanta

March 28, 2011, 9:39 PM

The Downtown to Ansley Mall concept is best due to the large volume of potential customers. What's more, it will also connect to the already approved "Tiger Streetcar." The Historic 4th Ward Park is just about complete and the area around City Hall East has already seen major development--the development needs to continue in order to make the initial line a success. Piedmont Park's area has a large residential and tourist customers base to support the line as well. I acknowledge that Atlanta's poor and depress areas need development more so than developed areas such as Buckhead and Midtown. However, we need to insure that the Beltline will be a success. Therefore, the next step in the Beltline project needs to continue to the Buckhead community after the Downtown to Ansley Mall line has been completed. After the Buckhead line we need to move forward to the true depress areas of Atlanta that the Beltline was created to develop. Hopefully in the future the Beltline project can have multiple lines developed at any given time instead of one line at a time.