



American Planning Association
Georgia Chapter

Making Great Communities Happen

Plan-Making Methods

AICP EXAM REVIEW

February 11-12, 2011
Georgia Tech Student Center



Session Outline

Introduction (5 min)

A. Basic statistics concepts (5 min)

B. Forecasting methods (5 min)

C. Population analysis and projection (5 min)

D. Economic analysis (10 min)

E. GIS and spatial analysis (10 min)

Example of a plan-making methods question

Industry	Local Employment	National Employment
X	3%	6%
Y	10%	7%
Z	11%	3%

5. Listed above are two types of employment percentages for industries X, Y, and Z in a metropolitan area. The local employment for each industry is listed as a percent of total local employment, and the national employment in each industry is listed as a percent of total national employment. Under the location quotient method, an economic planner can assign which of these industries to the export sector of the metropolitan area? **Y and Z only**

Basic methods bibliography



Berke, P., Godschalk, D. & Kaiser, E. (2006). **Urban land use planning** (5th ed.). Urbana: University of Illinois Press. (This classic text also has excellent, brief overviews of various plan-making methods. It is the best single plan-making review source.)

- Klosterman, R. E. (1990). **Community analysis and planning techniques**. Savage, Md.: Rowman & Littlefield. (Technical but good)
- McLean, M. (1992). **Understanding your economy** : using analysis to guide local strategic planning (2nd ed.). Chicago, Ill.: Planners Press, American Planning Association. (Very clearly written)
- Meier, K. J., & Brudney, J. L. (1997). **Applied statistics for public administration** (4th ed.). Fort Worth: Harcourt Brace College Publishers. (Many editions; any edition is fine)
- Patton, C. V., & Sawicki, D. S. (1993). **Basic methods of policy analysis and planning** (2nd ed.). Englewood Cliffs, NJ: Prentice Hall. (Excellent overview of fundamental methods and terms)
- Smith, S. K., Tayman, J., & Swanson, D. A. (2001). **State and local population projections** : methodology and analysis. New York: Kluwer Academic/Plenum Publishers. (Best resource on local projections)

A. Statistics

Types of data

- Four types of measurement scales
 - Nominal
 - Ordinal
 - Interval
 - Ratio
- Primary data vs. secondary data
- Enumeration or census vs. sample

Measures of central tendency

- Mean
 - Sum of items / Count of items
- Median
 - Sort items high to low
 - Select middle item, or average of two middle items
- Mode
 - What value occurs most often?
 - Bimodal distributions

Measures of dispersion

- Range
 - High value minus low value
- Variance
 - Subtract the mean from each value
 - Square each difference
 - Sum the squares of the differences and divide by the number of cases
- Standard deviation
 - Take the square root of the variance
 - Can relate to original units

B. Forecasting methods

- Intuitive methods
 - Delphi technique
 - Scenario writing
- Trend extrapolation methods
 - Assume future change of same amount added or subtracted per year (or decade)
 - Assume future change of same percentage increase (or decrease) per year (or decade, or any period)
 - Regression methods to fit lines or curves

Terms and methods

- **Dependent variable or y variable:** the variable being predicted
- **Independent variable(s) or x variable(s):** the variable(s) used to predict
- How many variables used to predict?
 - Bivariate regression (one x variable)
 - Multiple regression (two or more x variables)

Regression

- Assumes a straight line can be used to describe the relationship between the independent (x) variable and the dependent (y) variable.
- $y = a + b*x$ (or $y = m*x + b$)
- a is the line's y intercept
- b is the line's slope
- R^2 measures how well the line fits the data and ranges from 0.0 to 1.0

Bivariate regression

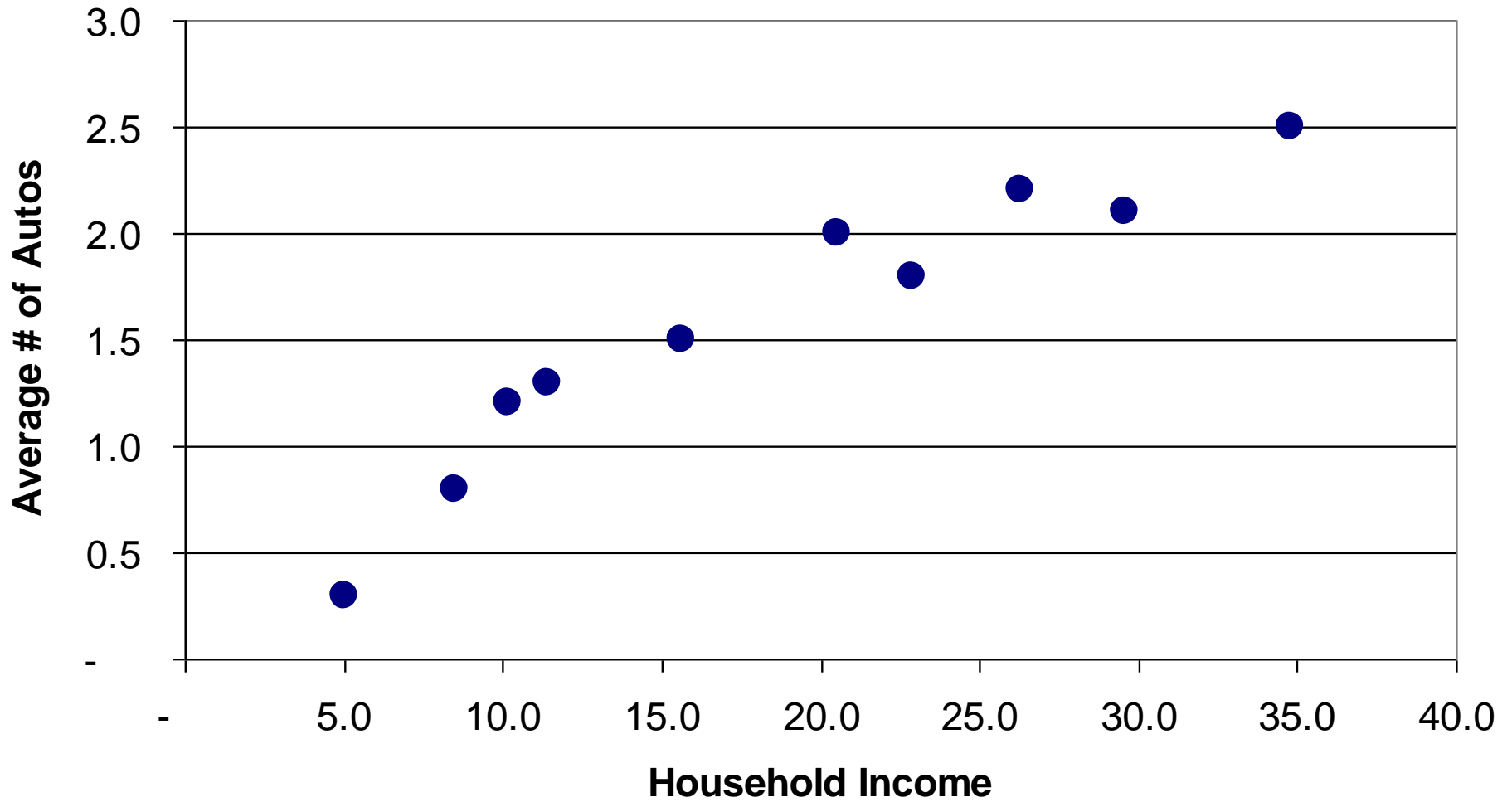
We want to predict the number of autos per household.

This is our data for 10 census tracts.

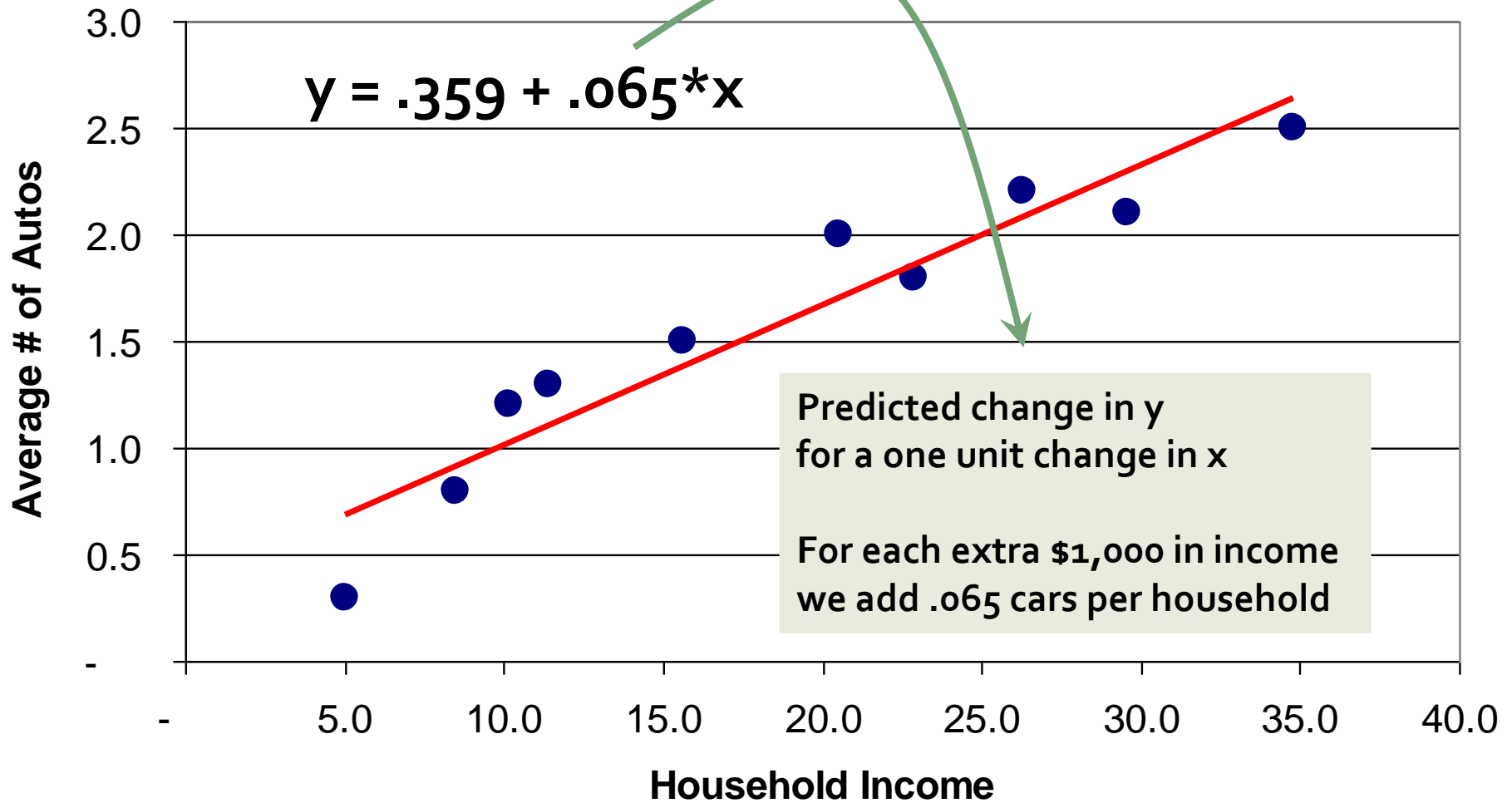
Income is listed in thousands of dollars.

Tract	Avg HH Income	Avg # of Autos per HH
1	5.0	0.3
2	8.5	0.8
3	10.2	1.2
4	11.4	1.3
5	15.6	1.5
6	20.5	2.0
7	22.9	1.8
8	26.3	2.2
9	29.6	2.1
10	34.8	2.5

Household Income vs. Auto Ownership



Household Income vs. Auto Ownership



Multiple regression uses more than one x variable

- y (house sale price) =
 x_1 * Square footage +
 x_2 * Number of bedrooms +
 x_3 * Number of bathrooms +
 x_4 * Accessibility to employment +
 x_5 * Location in historic district
- When an x coefficient is positive, higher values of x lead to higher values of y; when negative, lower

C. Population analysis and projection

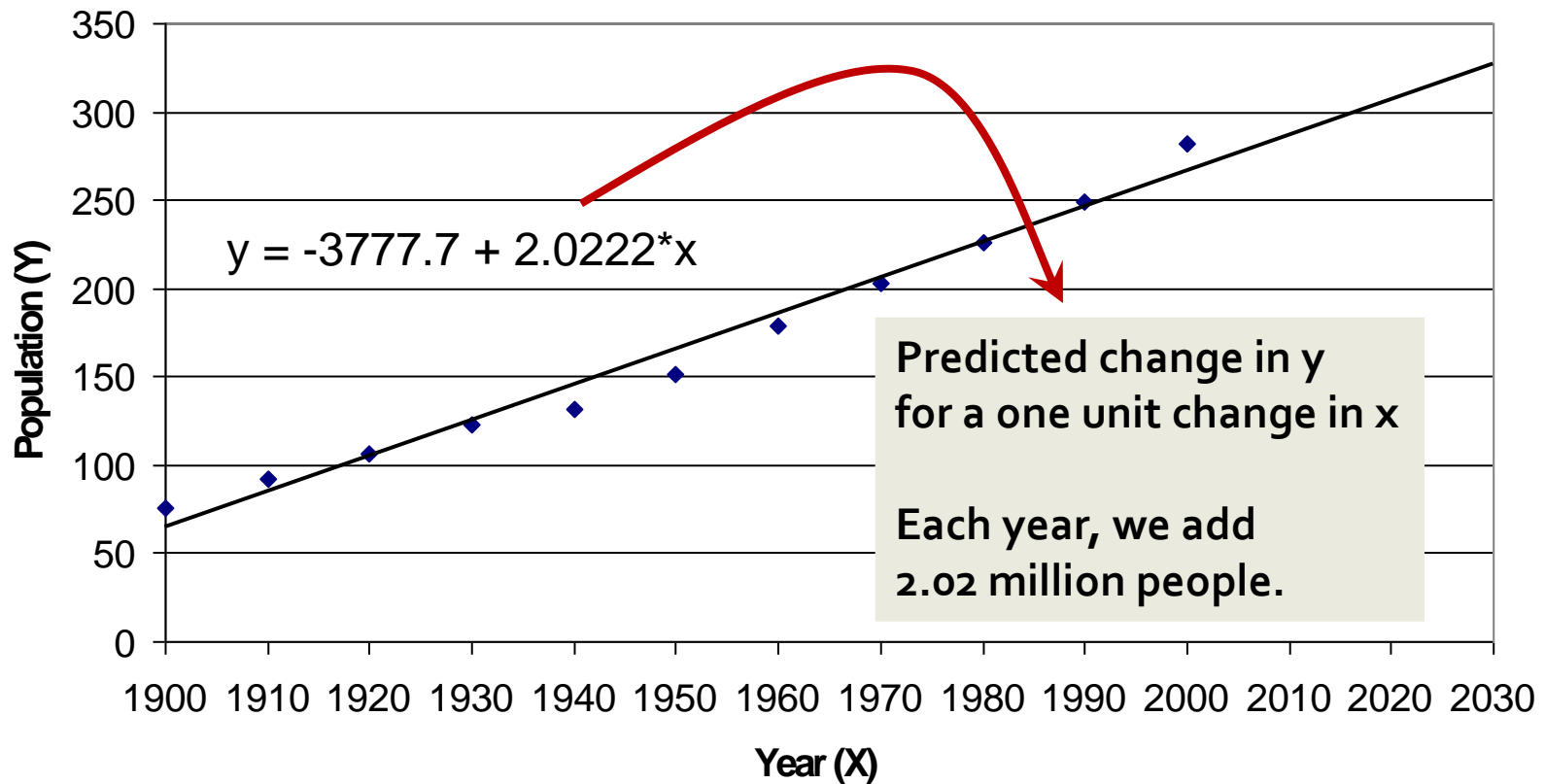
- An **estimate** is an indirect measure of a present or past condition that can not be directly measured.
- A **projection** (or prediction) is a conditional statement about the future.
- A **forecast** is a judgmental statement of what the analyst believes to be the most likely future.

Non-component projection methods

- Extrapolation with graphs
- Time series regression, with time (year) as the independent (x) variable
- Ratio methods comparing to similar areas
- Share methods using proportions of regional or state projections

Time series regression to project US population

US Population



Cohort component models

- We divide the population into cohorts by age (five years), sex, and race/ethnicity.
- Population change is subdivided into three components: births, deaths, migrants
- Calculate birth rates, survival rates, and migration rates for a recent period
- Extend those rates into the future, possibly adjusting them upward or downward
- Birth and death data is readily available; migration data is difficult, apart from Census years.

Migration notes

- Migration can be projected as a function of changes in employment, or
- If net migration = Inmigration - outmigration
- Then net migration can be estimated by the residual method:

1990 population: 100,000

2000 population: 120,000

1990 to 2000 births: 5,000

1990 to 2000 deaths 3,000

How many 1990 to 2000 net migrants? +18,000

D: Economic analysis

(1) Economic base theory

- Assumes two kinds of industry
 - Basic or export: sells to customers outside the area of analysis
 - Service or non-basic: sells to customers within the area
- Economic base multiplier
 - Total employment / basic employment
 - A multiplier of 4.0 says that 4 total jobs are created for every additional basic job

(2) Location quotients

- LQs compare the local concentration of employment in an industry to the national employment in that industry

- $LQ_i =$

$$\left(\frac{\text{Local employment in industry } I}{\text{Total local employment in all industries}} \right) \bigg/ \left(\frac{\text{National employment in industry } I}{\text{Total national employment in all industries}} \right)$$

More on location quotients

- Alternate formula: $LQ_i = \frac{\text{Local percent of employment in industry } i}{\text{National percent of employment in industry } i}$
- Interpreting LQs
 - If LQ_i is greater than 1.0 we can assume an export or basic industry
 - If LQ_i is less than 1.0 we can assume we import some goods or services
 - If $LQ_i = 1.0$, the region produces just enough to serve the region, and no more

Calculating basic employment

1. We can use LQs to estimate total basic employment
 - Use only industries whose LQ is greater than 1.0
 - For industry i basic employment is $(1 - 1/LQ_i) * \text{Local industry employment}$
 - Add basic employment for all industries
2. Or you can assign entire industries to either basic or service: Which is manufacturing? Local government?

(3) Shift share analysis

Shift share analysis interprets changes in an industry's local employment (over a period of x years) in terms of three components:

- **National share:** how much would local industry employment have changed if it mirrored changes in total national employment
- **Industry mix:** how much additional would it have changed if it mirrored national industry employment
- **Local shift:** how many additional jobs did the local industry gain or lose, presumably due to local competitive advantage or disadvantage.

(4) Input output analysis

- Each sale of a commodity (transaction) requires multiple inputs, including raw inputs, parts, and labor
- Sales of any one commodity ripple back through the economy, creating sales of many different commodities
- IO is useful for understanding the linkages between different industries, especially industries upstream and downstream from a target industry.

Industry-by-Industry Total Requirements after Redefinitions, 2002

(Total requirements, direct and indirect, per dollar of delivery to final demand, at producers' prices)

Supplying Industry	Industry code	Agric.	Mining	Utilities	Const.	Manuf.	Whole.	Retail
		1	2	3	4	5	6	7
01	Agric.	1.38	0.01	0.01	0.03	0.08	0.00	0.01
02	Mining	0.03	1.06	0.21	0.03	0.07	0.01	0.01
03	Utilities	0.04	0.03	1.01	0.01	0.03	0.01	0.02
04	Const.	0.01	0.04	0.03	1.01	0.01	0.00	0.01
05	Manuf.	0.36	0.21	0.12	0.43	1.62	0.09	0.08
06	Whole.	0.08	0.03	0.02	0.06	0.09	1.04	0.02
07	Retail	0.00	0.01	0.00	0.05	0.01	0.00	1.00
08	Transp.	0.06	0.04	0.09	0.04	0.06	0.04	0.04
09	Info.	0.02	0.03	0.02	0.04	0.05	0.03	0.03
10	FIRE	0.23	0.21	0.10	0.10	0.11	0.09	0.15
11	Prof/Bus Serv.	0.11	0.19	0.12	0.17	0.22	0.15	0.13
12	Ed/Health /Serv.	0.01	0.00	0.00	0.00	0.00	0.00	0.00
13	Accom/Food	0.01	0.01	0.02	0.01	0.02	0.01	0.01
14	Other Serv.	0.01	0.01	0.01	0.02	0.01	0.01	0.01
15	Gvmt.	0.02	0.01	0.01	0.01	0.02	0.02	0.02
T010	Total industry output r	2.36	1.90	1.78	2.02	2.41	1.51	1.54

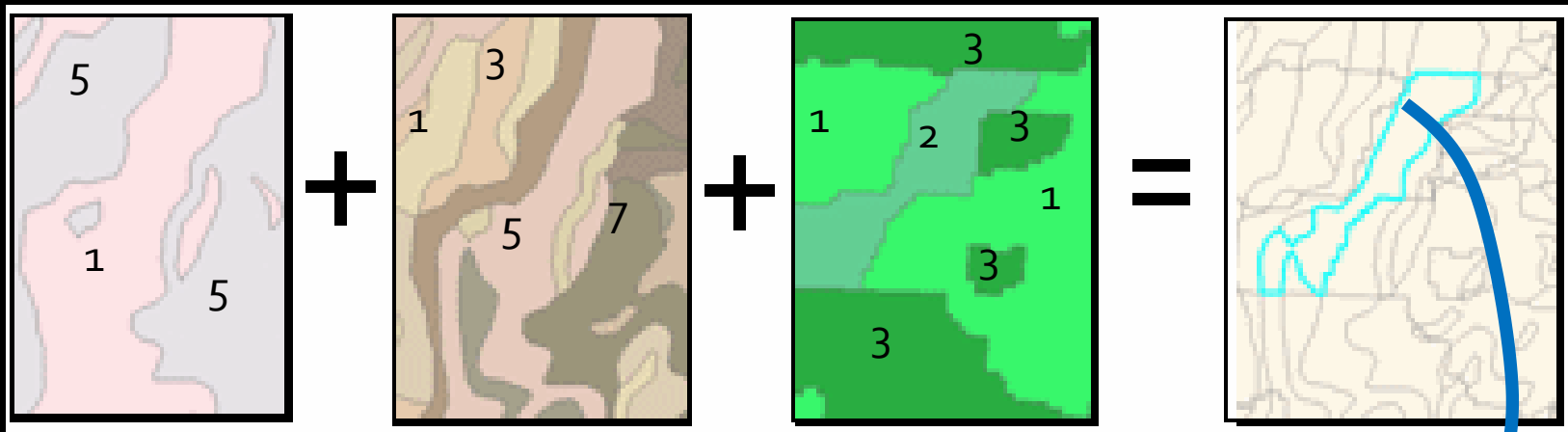
Table coefficients show how many cents (¢) of input from the supplying industry (Manuf.) are required to produce \$1.00 of output from the purchasing industry (Const.)

E. GIS and spatial analysis

- Review a list of GIS terms, for example <http://www.vcgi.org/techres/standards/glossary.pdf>
- Understand basic mapping terms, including
 - Scale
 - Projections
 - Coordinate systems, in particular
 - Geographic coordinates (longitude and latitude)
 - Universal transverse mercator (UTM) and
 - State plane coordinate systems

Land suitability analysis

- LSA was popularized by Ian McHarg in *Design with Nature*.
- It is used in land use planning to determine areas more or less suitable for different land uses.
- It was originally done with physical Mylar maps, which were overlaid on a light table.
- It is now conducted GIS systems capable of overlaying multiple polygon layers.



Soils

Layer Weight: 1

Slope

Layer Weight: 3

Vegetation

Layer Weight: 2

$1*1 +$

$5*3 +$

$2*2 = 11$

- Assign a suitability-related score to each value in each layer.
- Determine a weight (importance) for each layer.
- Multiply each polygon's score times its layer's weight.
- Overlay the three input layers with GIS.
- Add the weighted scores for each small polygon.
- The resulting small polygon outlined in blue then has an overall suitability score of 11.

Good luck! And may you all score highly suitable on the planner suitability analysis.



American Planning Association
Georgia Chapter

Making Great Communities Happen