



American Planning Association
Georgia Chapter

Making Great Communities Happen

Functional Areas of Practice

AICP EXAM REVIEW

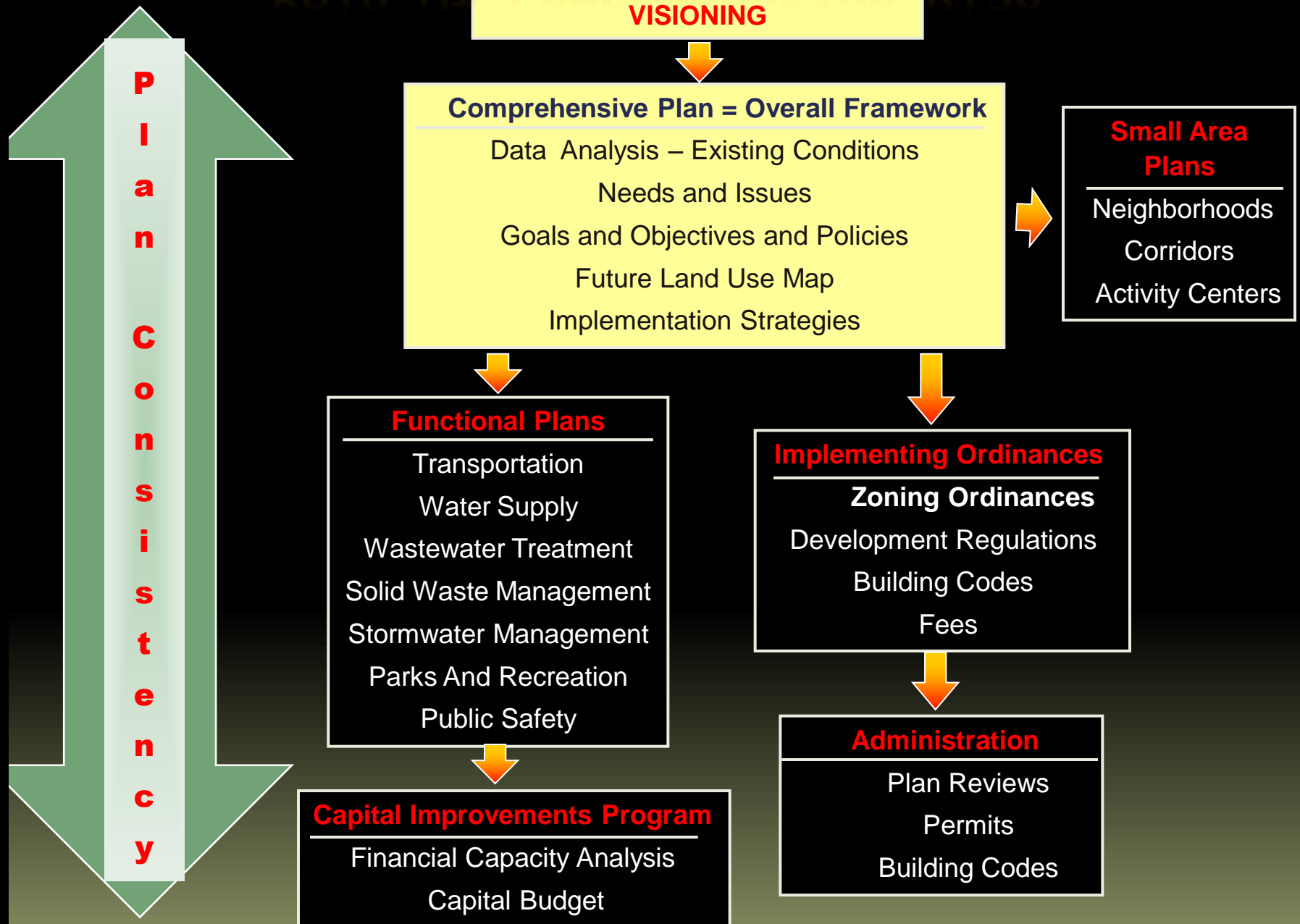
January 18, 2013
Georgia Tech Student Center

Areas of Practice

- Community development
- Comprehensive or long range planning
- Development regulation or administration
- Economic development and revitalization
- Economic analysis and forecasting
- Education, institutional, or military facilities planning
- Energy policy
- Food systems planning
- Growth management
- Hazard mitigation and disaster planning
- Historic preservation
- Housing
- Infrastructure
- Labor force and employment
- Land use
- Natural resources and the environment
- Parks, open space, and recreation
- Planning law
- Policy planning
- Public services
- Social and health services
- Transportation
- Urban design



Role Of Comprehensive Plan



Development Regulation or Administration

- Site plans
- Rezoning applications and reports
- Variances
- Subdivision plats
- Zoning questions
- Special code administration
- Regulatory changes

Economic Analysis and Forecasting

- Economic Base Model
- Basic/non-basic sectors of economy
- Step-down Forecast
- Location Quotient
- Shift-share Analysis
- Input-Output Analysis
- Fiscal impact analysis
- Market analysis
- Factors influencing business location

Labor Force and Employment

- Work force participation rates
- Workforce/ Job training
- Industry sectors used in workforce planning
- Relative wage levels of various sectors

Economic Development and Revitalization

- Targeted Areas
- Incentives
- Financial Strategies
- Public/ Private Partnerships
- Development authorities
- Targeted public improvements
- Acquisition/ Redevelopment

Educational, Institutional and Military Facilities Planning

- Base Realignment and Closure (BRAC)
- University or campus planning
- Hospital planning
- Criminal justice planning

Energy Policy

- State or federal energy plans
- Energy audit
- Energy sources - utilities vs. local sources
- Climate Action Plans
- Greenhouse gas emission reduction goals
- Alternative technology, fuel or vehicles

Food Systems Planning

- Urban “Food deserts”
- Locally grown food sources
- Organic farms
- Farmers markets
- Food transport
- Farmland protection

Growth Management

- Timing, location, and intensity of development
- Comprehensive Plan
- State critical area protection
- Urban Growth boundaries/ Urban Service Areas
- Infrastructure planning and finance
- Focus on managing land supply
- Environmental protection

Hazard Mitigation and Disaster Planning

- Evacuation planning
- Flood Insurance
- Emergency Management Plans
- Local Recovery Plans

Historic Preservation

- Historic district management
- Historic property surveys
- Historic property designations
- Historic property redevelopment
- Adaptive reuse

Housing Planning

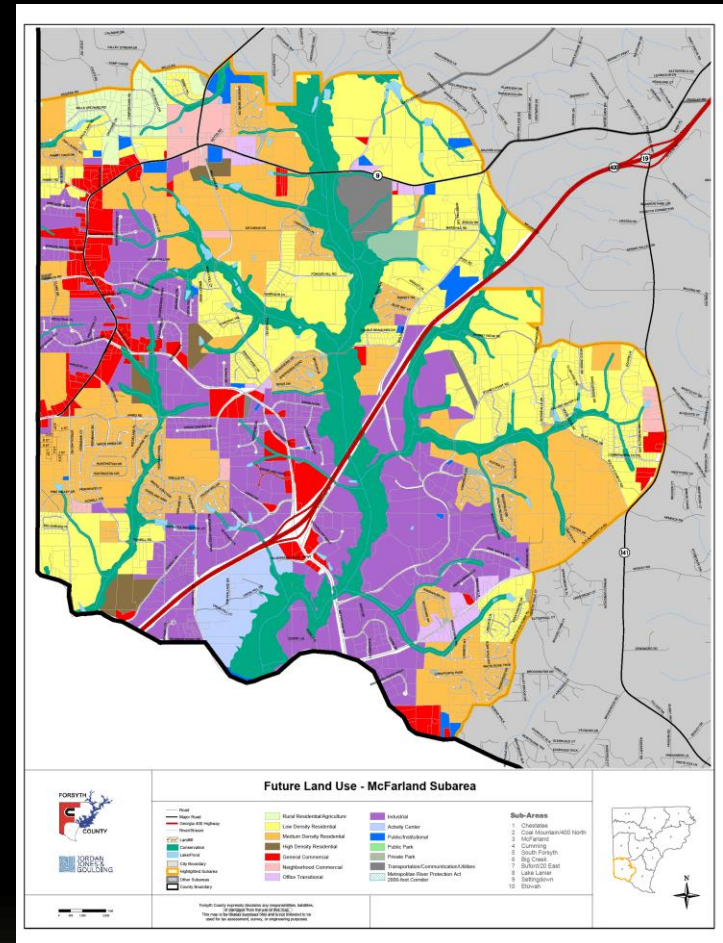
- Household formation and structure
- Housing tenure
- Publicly-assisted housing
- Impact of code changes
- Inclusionary/ Exclusionary Housing policies
- Manufactured housing (mobile homes)
- Senior housing/ lifelong communities
- Jobs/housing balance

Infrastructure

- Transportation (all modes)
- Water Supply and distribution
- Waster collection/ disposal
- Stormwater Management
- Telecommunications facilities
- Energy production/ distribution
- Solid Waste Management / Recovery/ Recycling
- Infrastructure maintenance
- Permitting

Land Use

- Comprehensive planning
- Small Area studies
- Environmentally sensitive areas
- Rural land protection
- Open space planning
- Land use Scenarios
- Coordination /timing of infrastructure and community facilities
- Zoning ordinances and administration



Natural Resources and Environment

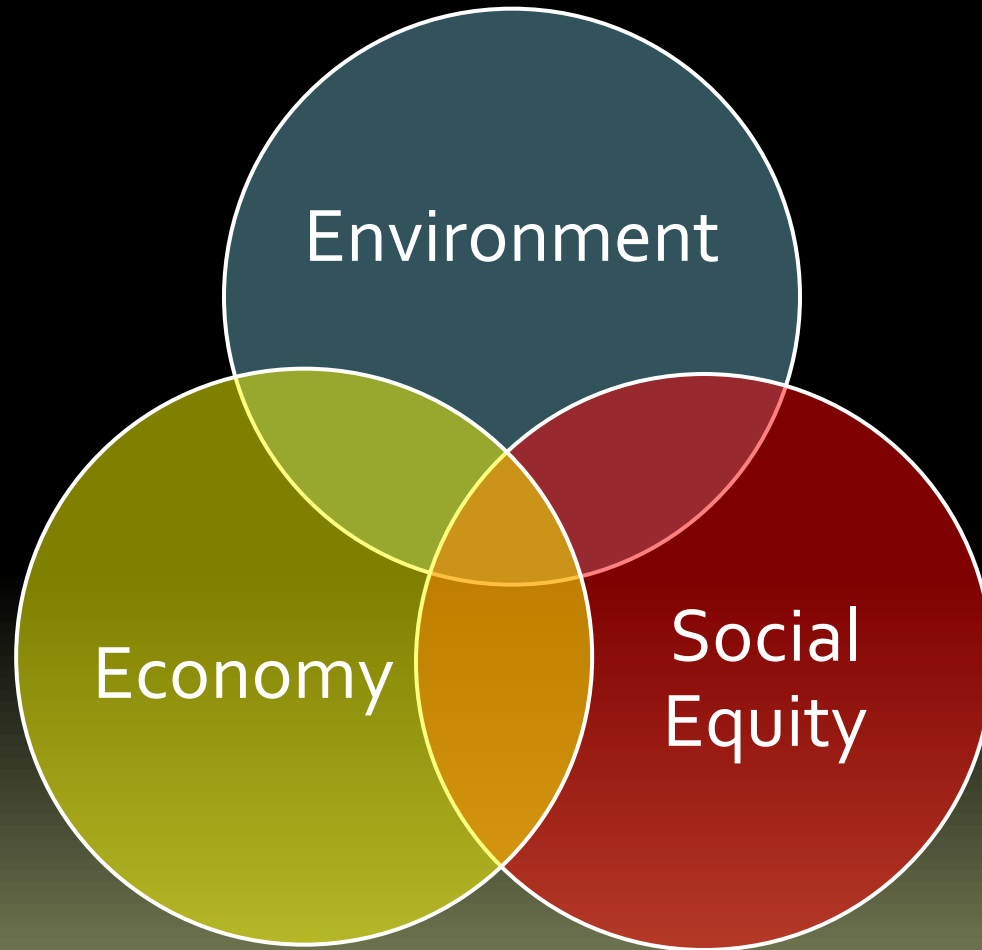
- Non-replaceable resources - Water, Air, Land
- Ecology- ecosystems, ecozones, ecotones
- Sensitive habitat / wildlife areas
- Coastal, freshwater and isolated wetlands
- Floodplain, stream and river corridors
- Protection of estuaries and coasts
- Watersheds/ Aquifers – drinking water
- Erosion/ sedimentation
- Mountains and ridgelines
- Impervious surface management

Natural Resources and Environment

Federal and state regulations and programs

- Clean Water Act
- Section 404 – Corps of Engineers
- CZM, NOAA, NEPA, FEMA, FIRM, NFPA
- NPDES, Section 303 (d) - TMDL
- Environmental Impact Statements
 - Categorical Exclusion
 - Environment Assessment (CA)
 - Environmental Impact Statement (EIS)
- Clean Air Act - NAAQS- NO_x, SO_x, Ozone
- Endangered Species Act

Sustainability



Parks, Open Space and Recreation

- Park Planning – regional, community, local
- Active vs. Passive parks
- User group needs
- Greenspace / open space master plans
- Value of parks and recreation to communities
 - Public Health and Fitness
 - Preservation of natural functions
 - Aesthetics
 - Real estate value-added

Planning Law

- Application to Land use planning
- Local, state and federal regulations
- Private property rights vs. public interests
- Due Process – substantive and procedural
- Equal Protection
- Taking/ eminent domain / inverse condemnation
- Freedom of Speech and Religion (RLUIPA)
- Zoning – Police Power
- Subdivisions, Building Codes
- Permitting

Community Development

- Administer CDBG funds
- Economic development in targeted areas
- Community facilities
- Community or neighborhood planning
- Housing programs
- Low/ moderate income households
- Social services
- Community involvement

Policy Planning

- What is a Goal? Objective? Policy?
- Who makes government policy?
- Role of policy in plan implementation
- Policy Analysis - Alternatives
- Program evaluation

Public Services

- Cost of Services
- Service Area Planning – distribution of services
- New Service Development
- Government Administration or Budgeting
- What do services cost? Who pays?

Social and Health Services

- Housing and Homeless
- Unemployment
- Crime and addiction
- Public Health risks
- Senior Services
- Children / Adolescent Services
- Mental health services
- Transportation services
- Non- profit providers

Transportation Planning

- Metropolitan Planning Organizations (MPOs)
- Modeling
- Multi-modal corridors
- Transit service planning
- Bicycle and pedestrian facilities
- Traffic operations and safety
- Finance – public sources - tolls
- Maintenance

Urban Design

- Public realm/ private realm
- Visual character and image – sense of place
- Districts, Corridors, Gateways
- Context Sensitive Design (CSD)
- Smart Code or Form Codes
- Community design standards
- Project Design - New or Redevelopment

Big Issues for Planners

- **Water availability**
- **Transportation mobility and congestion**
- **Economic development/ jobs**
- **Funding for everything**
- **Livable communities/New urbanism**
- **Housing costs, locations and choices**
- **Sprawl**
- **Farmland protection**
- **Rural character**
- **Energy/Climate Change**
- **Open space/ Greenspace protection**
- **Infill/Redevelopment**

Functional Areas of Practice

QUESTIONS?