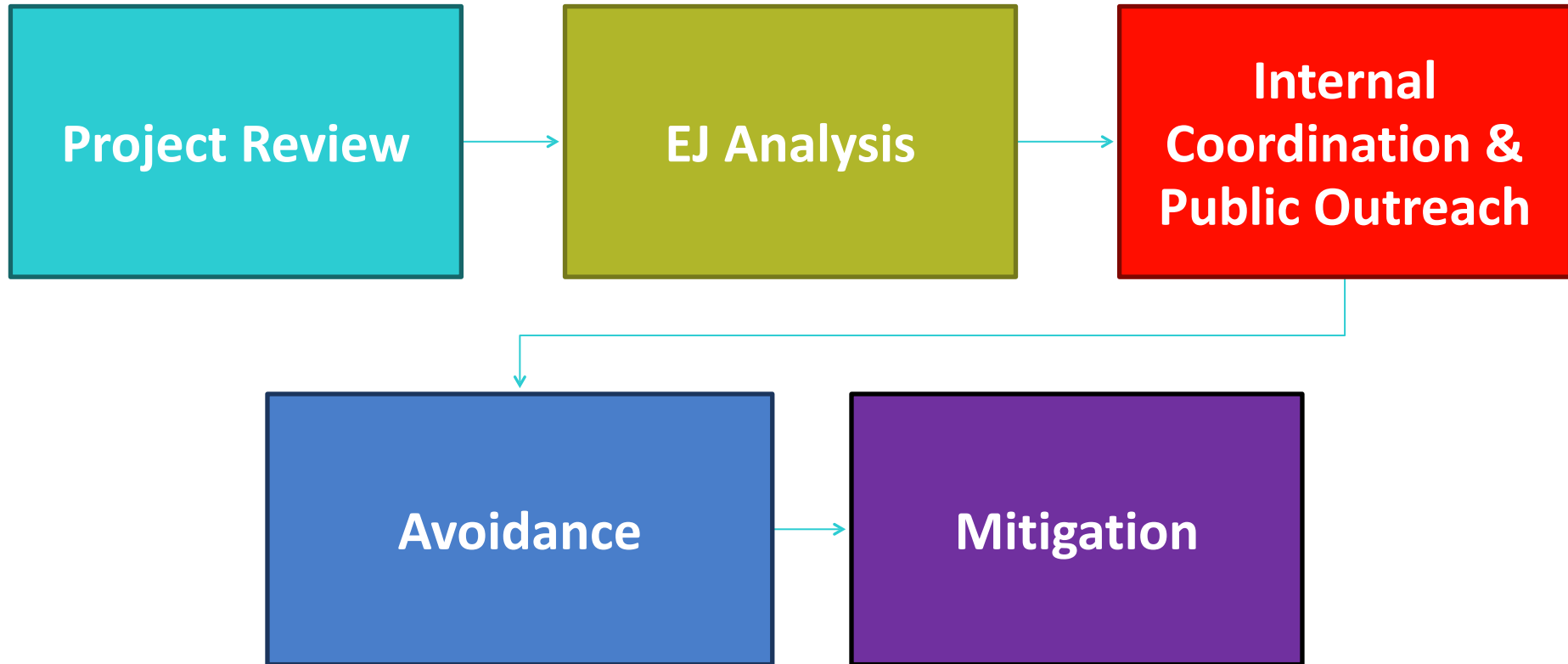




Environmental Laws and Transportation Decision-making

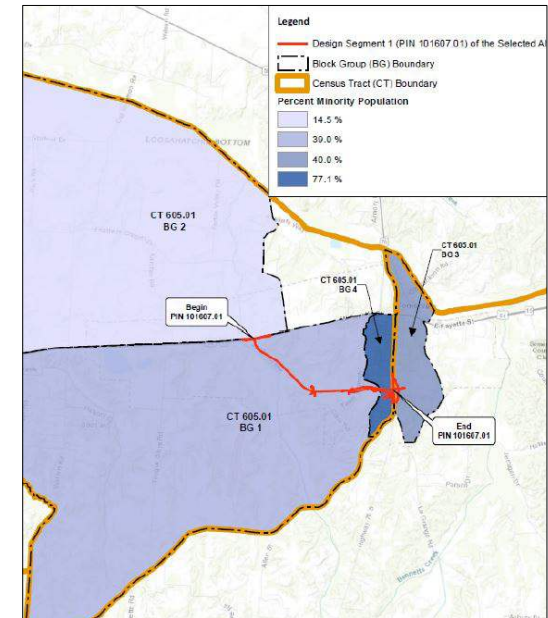
GA/TN APA Fall Conference
October 6, 2021

A DOT Approach to Environmental Justice



Project Review

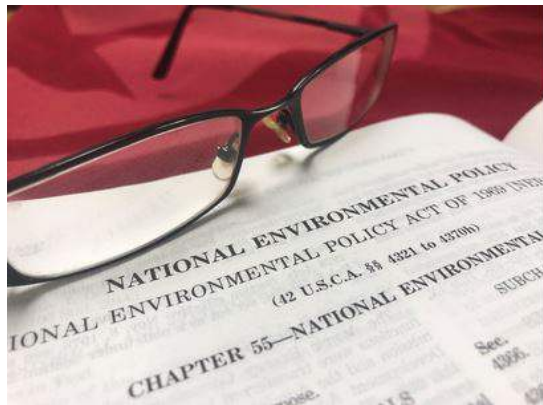
- Planning Documents
- Previous Environmental Documents
- Current Guidance/Regs
- Maps/Satellite Images
- Census Data
- Property Data
- Land Uses



TENNESSEE
DEPARTMENT OF TRANSPORTATION



TECHNICAL REPORT



Establishing a Methodology

Regs and Guidance

- Executive Order 12898, *Federal Actions to Address Environmental Justice in Minority Population and Low-Income Populations (1994)*
- FHWA Order 6640.23A, *FHWA Actions to Address Environmental Justice in Minority Population and Low-Income Populations (2012)*
- FHWA Memorandum, *Guidance on Environmental Justice and NEPA (2011)*

Defining Thresholds

- Developed by TDOT, in collaboration with FHWA
- TDOT has defined 2 thresholds:
 - The percent of the block group population that is minority and/or low-income exceeds the county average by 10 percentage points or more; and/or
 - Minority and/or low-income individuals within the block group population account for 50 percent or more of the overall block group population.

EJ Analysis

EJ Data Collection and Analysis Sheet					
Resource	American FactFinder				
Data Src	2015-2019 American Community Survey 5-Year Estimates; U.S. Census Bureau's Population Estimate Program				
Date Collected	9/14/2021				
Project ID					
County	PIN	Route			
Census Tract	CT	CT	CT	CT	
Block Group	BG	BG	BG	BG	

Low-Income Data Analysis					
	CT BG	CT BG	CT BG	CT BG	
	Estimate	Estimate	Estimate	Estimate	Estimate
Total:					
• Under 0.50					
• 0.50 to 0.99					

*Source: "Table C17002 - Ratio of Income to Poverty Level in the Past 12 Months," U.S. Census Bureau, 2012-2016 American Community Survey 5-Year Estimates.

Low-Income Percentages for Data Analysis					
% of Population Below Poverty Line County					
% of Population Below Poverty Line Block Group(s)					

Environmental Justice Analysis Table

Minority Populations					
Census Tract (CT)/ Block Group (BG)	CT BG	CT BG	CT BG	CT BG	County
% Minority/Non-White					
Exceeds County Avg. by 10% or More					
>50% of Block Group Pop.					
Meet EJ Criteria?					
Low-Income Populations					
Census Tract (CT)/ Block Group (BG)	CT BG	CT BG	CT BG	CT BG	County
% Low-Income/ Below Poverty Line					
Exceeds County Avg. by 10% or More					
>50% of Block Group Pop.					
Meet EJ Criteria?					

Source: U.S. Census Bureau, 2015-2019 American Community Survey (ACS) 5-Year Estimates. ACS data was accessed and reviewed on __/__/__ via American FactFinder, from the U.S. Census Bureau website.

Minority Data Analysis					
	CT BG	CT BG	CT BG	CT BG	
	Estimate	Estimate	Estimate	Estimate	Estimate
Total:					
• Not Hisp./Latino:					
◦ White alone					

*Source: "Table B03002 - Hispanic or Latino Origin by Race," U.S. Census Bureau, 2012-2016 American Community Survey 5-Year Estimates.

Minority Percentages for Data Analysis					
% Minority of Total Population County					
% Minority of Total Population Block Group(s)					

Internal Coordination

The goal is to AVOID, but avoidance requires coordination and collaboration



- Planners
- Designers
- NEPA
- Civil Rights
- Community Relations
- Right-of-Way
- Environmental/Technical Studies Staff

Public Outreach/Engagement

VIRTUAL PUBLIC MEETINGS FOR
STATE ROUTE 29 (US-27)
ROADWAY IMPROVEMENTS
PROJECT IN SCOTT COUNTY
FROM NEAR WOLF CREEK ROAD
TO NEAR STATE ROUTE 63
PINs 101414.00 and 101414.03



JOIN VIA ZOOM!

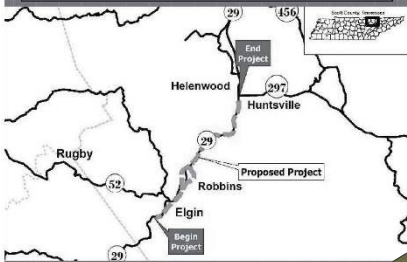
TUESDAY
MARCH
16
7:00 PM EST

To join from a PC, Mac, iPad, iPhone, or Android device (data rates may apply), please use the following link:
• <https://kimley-horn.zoom.us/j/92611065457>
To join by audio only via a cell phone or land line, please dial:
• Toll Free: 888.475.4499 or 833.548.0276
• Enter Zoom Meeting ID: 926 1106 5457

THURSDAY
MARCH
18
7:00 PM EST

To join from a PC, Mac, iPad, iPhone, or Android device (data rates may apply), please use the following link:
• <https://kimley-horn.zoom.us/j/94083706618>
To join by audio only via a cell phone or land line, please dial:
• Toll Free: 888.475.4499 or 833.548.0276
• Enter Zoom Meeting ID: 940 8370 6618

Participants who are participating via audio only should dial *9 on their dial pad to talk or ask a question during the question and answer portion. You will be asked to unmute yourself by dialing *6 when the moderator states it is your turn to speak. Participants are encouraged to join the meeting a few minutes early to test connections with their phones or other devices. Please note that the same presentation will be given at each meeting.

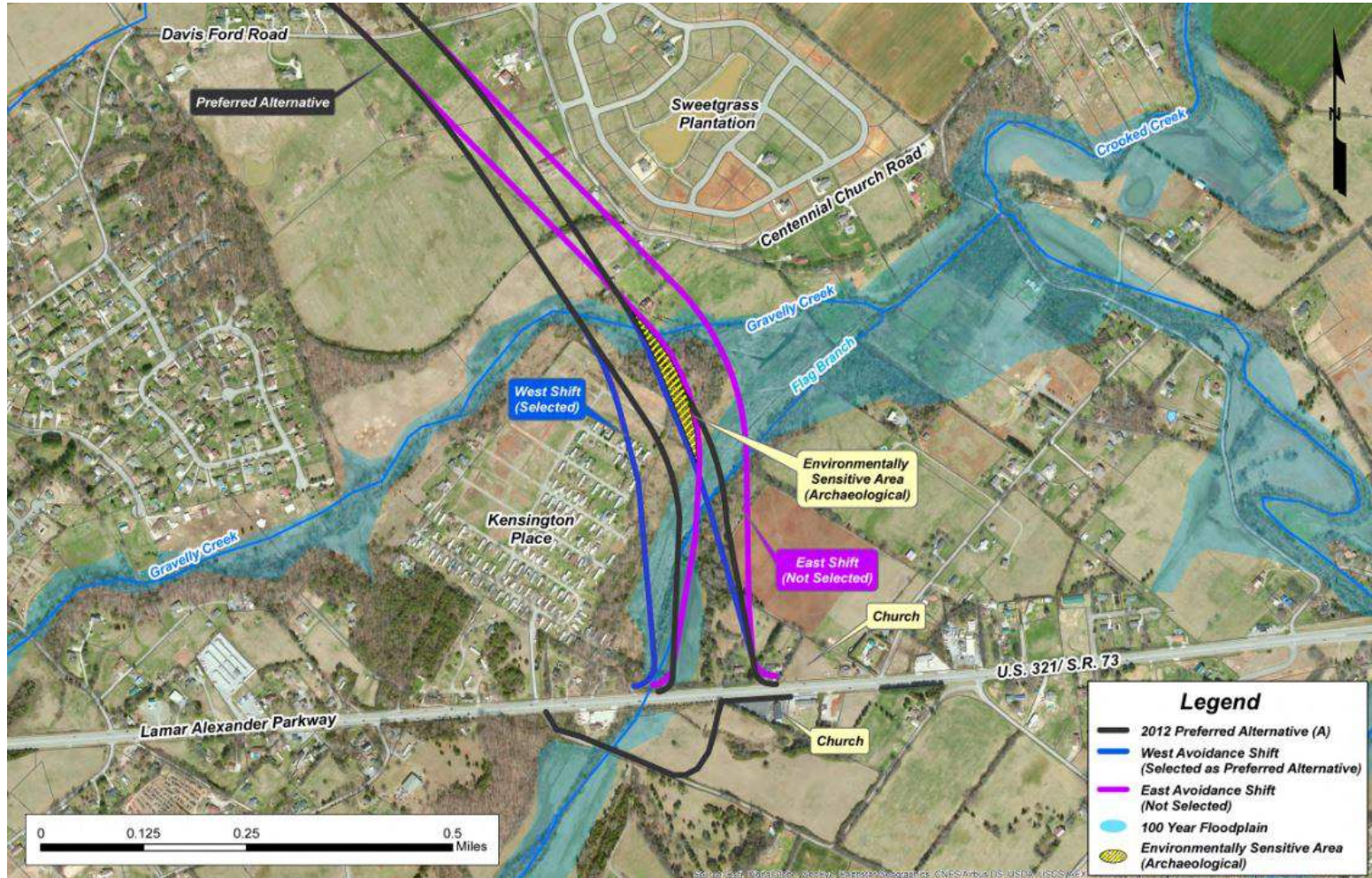


WANT TO FIND OUT MORE ABOUT THE SR-29 (US-27) PROJECT?

Visit www.tn.gov/tdot/projects/projects-region-1/state-route-29-us-27 to join the public meeting, view project design files, public meeting handout, PowerPoint presentations and comment cards. Printed copies of this information will also be available beginning March 1, 2021 from 8:00 am to 4:30 pm at the Scott County Mayor's Office, 204 W. Second Street, Huntsville, TN 37420.



Avoidance of Impacts



Mitigation

Mitigate for what is being impacted...



Thank you!

- Questions or Comments???

Erick Hunt-Hawkins, Environmental Manager
615-253-5163 | Erick.Hunt-Hawkins@tn.gov
TDOT Environmental Division | NEPA Office
<https://www.tn.gov/tdot/environmental-home/nepa-office.html>

